

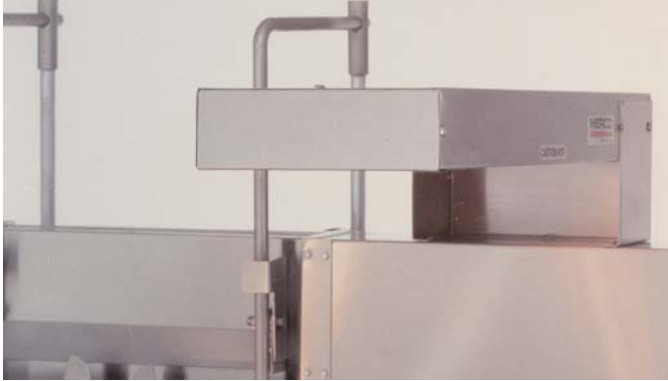


ITEM NO.

Food Warmers and Dump Stations

Food Warmers and Dump Stations
Used with Frymaster Filter Magic® Systems and Spreaders

AAA File No. 35-C111



Rod-style food warmer.



Bulb-style food warmer .



Dump station with scoop-type perforated pan.



Dump station with cafeteria-style dump pan.

- Keeps food fresh and hot
- Durable construction, easy to clean
- Indicator lights "ON/OFF" switch
- Stainless steel cafe pan, 12" x 20" x 2-1/2" (305 x 508 x 64 mm) with mesh screen
- Optional scoop-type, perforated pan, 13.50" x 18.50" x 5.25" (343 x 4610 x 133 mm)
- Customized temperature selection (on Thermoglo unit)

THE RECTANGULAR ROD-STYLE FOOD WARMER produces an 18" (457 mm) heat pattern over the entire length of the unit to gently warm cooked food with radiant heat to assure peak flavor without cooking or drying. The shell is manufactured with durable stainless steel and aluminum alloys and is easy to clean. "ON/OFF" switch, indicator light and a 6' (1.8m) cord set are mounted in the shell. Mounting brackets and hardware are provided for installation. This unit is NSF, UL and CSA approved and can be used with either the cafeteria-style pan with mesh screen or the perforated curved scoop pan for quick, easy bagging.

THE BULB-STYLE FOOD WARMER is constructed of aluminum alloys for long life and easy cleaning. Two attractive lamps mounted on an adjustable arm emit controlled, efficient, infrared heat to keep foods hot and fresh. A 6' (1.8 m) cord set with in-line "ON/OFF" switch is provided. This unit is NSF, UL, and CSA approved and can be used with either the cafeteria-style pan with mesh screen or with the perforated, curved scoop pan for quick, easy bagging.

Note: Unless otherwise specified, rod-style heat lamp and cafeteria-style dump pan will be supplied with Filter Magic® System.



ISO 9001:2000

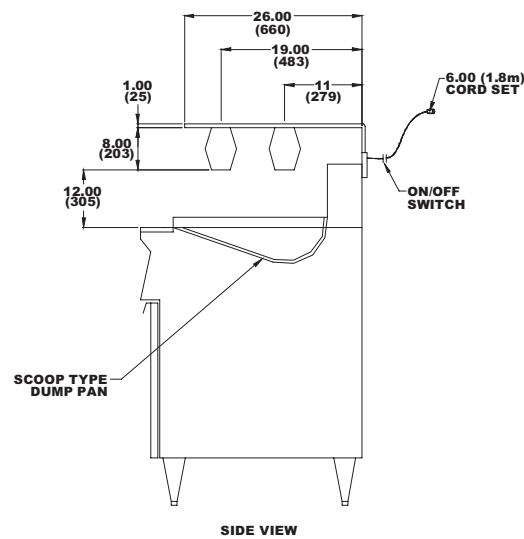
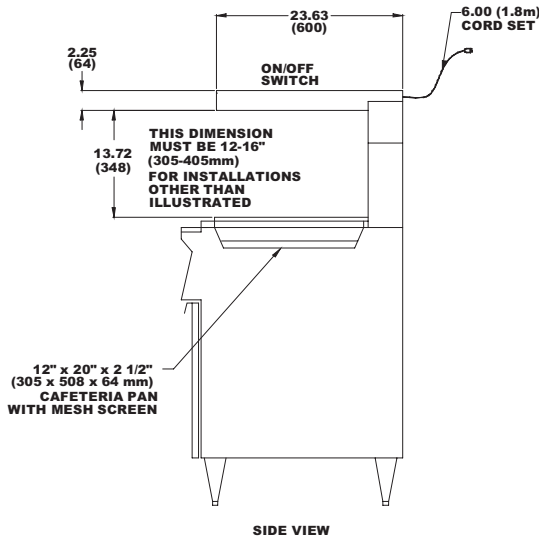
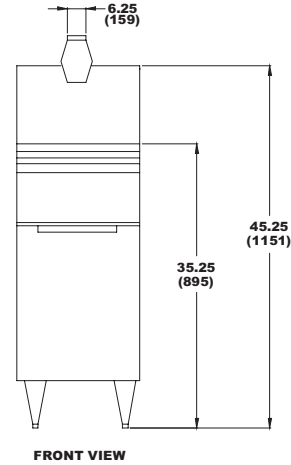
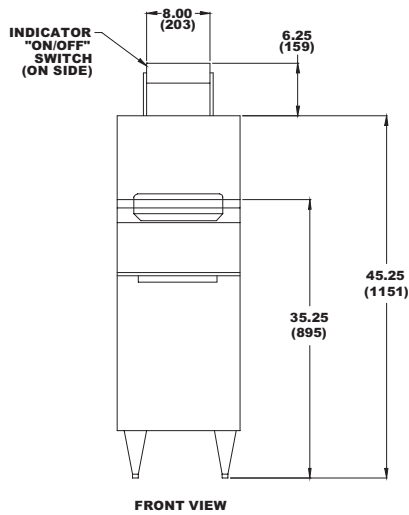


Frymaster, L. L. C.

8700 Line Avenue, P. O. Box 51000, Shreveport, Louisiana 71135-1000, USA, Phone 318-865-1711

TOLL FREE 1-800-221-4583 Fax 318-868-5987

Distributed in Canada by GARLAND COMMERCIAL RANGES, LTD., 1177 Kamato, Mississauga, Ontario L4W 1X4



DIMENSIONS

MODEL	DEPTH	WIDTH	LENGTH
ROD-STYLE FOOD WARMER	2.50" (64 mm)	8" (203 mm)	23.60" (599 mm)
BULB-STYLE FOOD WARMER	8" (203 mm)	6.25" (159 mm)	26" (660 mm)
CAFETERIA-STYLE DUMP PAN	2.50" (64 mm)	12" (305 mm)	20" (508 mm)
SCOOP-STYLE DUMP STATION	5.25** (133 mm)	13.50" (343 mm)	18.50" (470 mm)

*Depth is shown for deepest point in pan.

POWER REQUIREMENTS

VOLTAGE	120	208	240
AMPS	6.9	4.8	3.4

INDICATE DESIRED VOLTAGE

HOW TO SPECIFY

- FWH-1** Rod-style food warmer with cafeteria pan.
- FWH-1A** Rod-style food warmer with scoop-style pan.
- FWH-2** Bulb-style food warmer with scoop-style pan.
- FWH-2A** Bulb-style food warmer with cafeteria-style pan.

NOTES

Food Warmers 825 Watts

OPTIONAL ACCESSORIES

Food warmers/dump stations are optional accessories used with Frymaster Filter Magic® Systems and spreader cabinets. Components are also available separately to fit existing Frymaster filter cabinets and spreader cabinets.



Frymaster, L. L. C.
8700 Line Avenue, P. O. Box 51000, Shreveport, Louisiana 71135-1000, USA, Phone 318-865-1711

TOLL FREE 1-800-221-4583 Fax 318-868-5987

Distributed in Canada by **GARLAND COMMERCIAL RANGES, LTD.**, 1177 Kamato, Mississauga, Ontario L4W 1X4