



Installation Instructions



Frymaster/Dean, members of the Commercial Food Equipment Service Association, recommends using CFESA Certified Technicians.

24-Hour Service Hotline 1-800-551-8633

Price: \$6.00
819-5866
10-01

FISH-N-CHIPS

FRYING SYSTEMS

Installation Instructions



Frymaster H50 Series
Gas Fryer



Dean 24G Series Gas Fryers
with UFF Filtration System

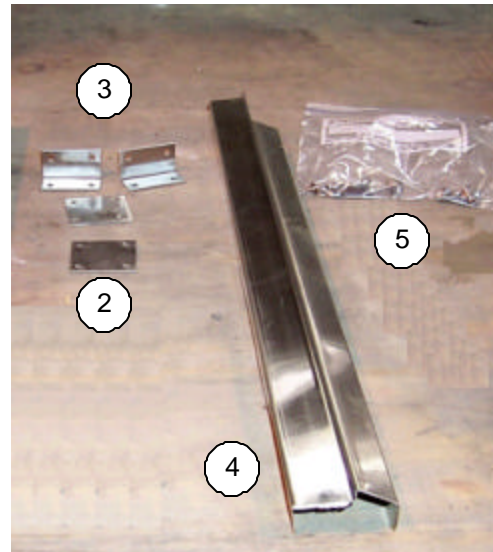
Getting Started

Before beginning installation, check to see that you have all the parts and components needed to properly install the *Fish-N-Chips* Frying System. The kit should contain:

Component #	Component Description	Quantity
❑ 1	"L"-Shaped H50 Drainpipe	1
❑ 2	Front Connector (battering) Plates	2
❑ 3	Rear Connector (battering) Plates	2
❑ 4	Joiner Strip	1
❑ 5	Connecting Hardware	Varies
❑ 6	Over-The-Fryer Crumb Dump	1



1



6

OVERVIEW

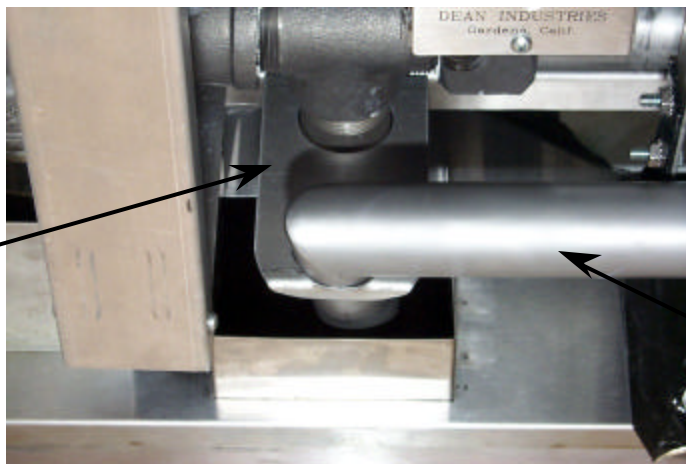
The Fish-N-Chips Frying System must be assembled upon delivery. The 24G (Fish Fryer) and H50 (Chips Fryer) share the UFF filtration system. Components are included to connect the drain system of the H50 fryer to the 24G drain/filter system. A two-wire connector (24-volt oil return circuit) joins the H50 to the 24G fryer(s). This allows control of the filtering process from either fryer. Additional installation steps include connecting the oil return flex lines, drainpipes, fryer-connector plates and optional components.

Uncrate and roll fryers into place. Determine fryer lineup. Do not connect fryers together at this time.



Insert the Frymaster H50 drainpipe into the bracket of the Dean 2424 fryer battery.

Drain Tube
Bracket

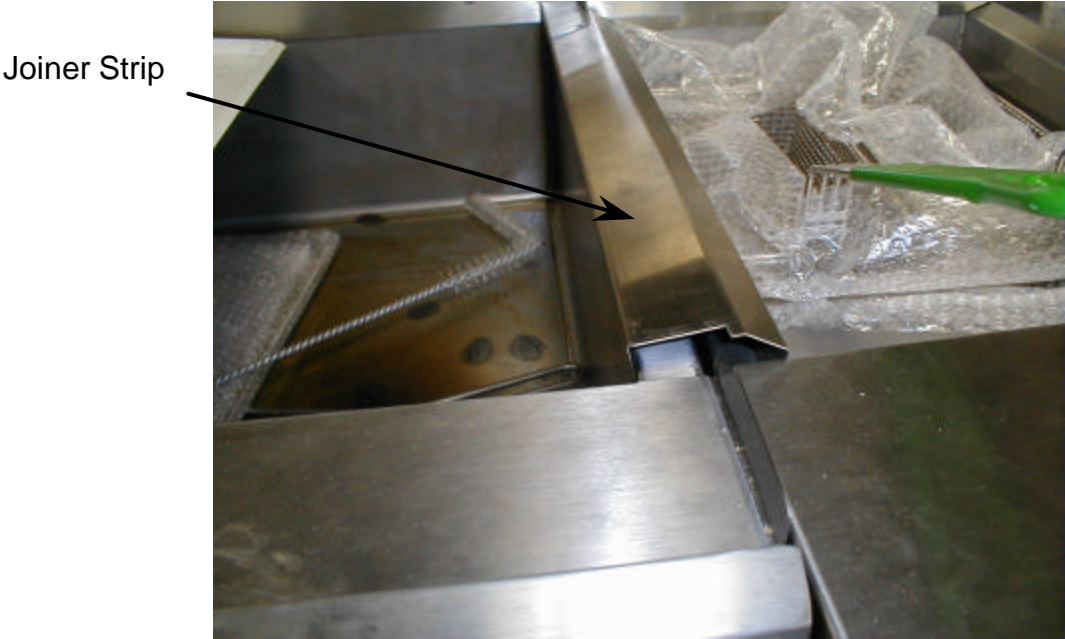


Drain Tube

After fryers are in place and before battering together, insert H50 drain tube into drain nut and tee.

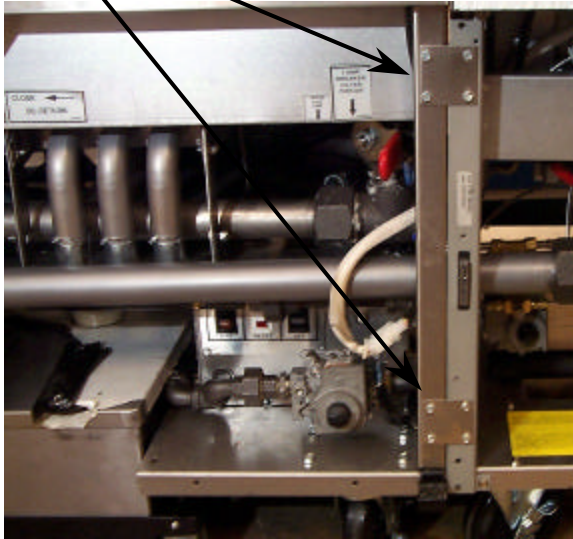


Push fryers together. Attach joiner strip. You may need to clamp the fryers together.



With joiner strip in place, attach front and rear connector (battering) plates. Ensure cabinets are properly aligned.

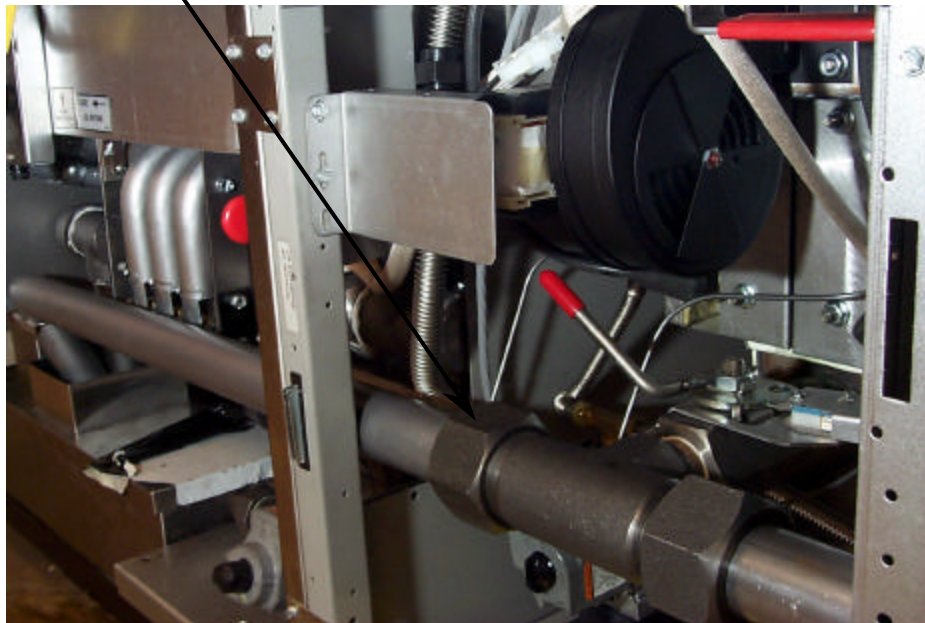
Front



Rear



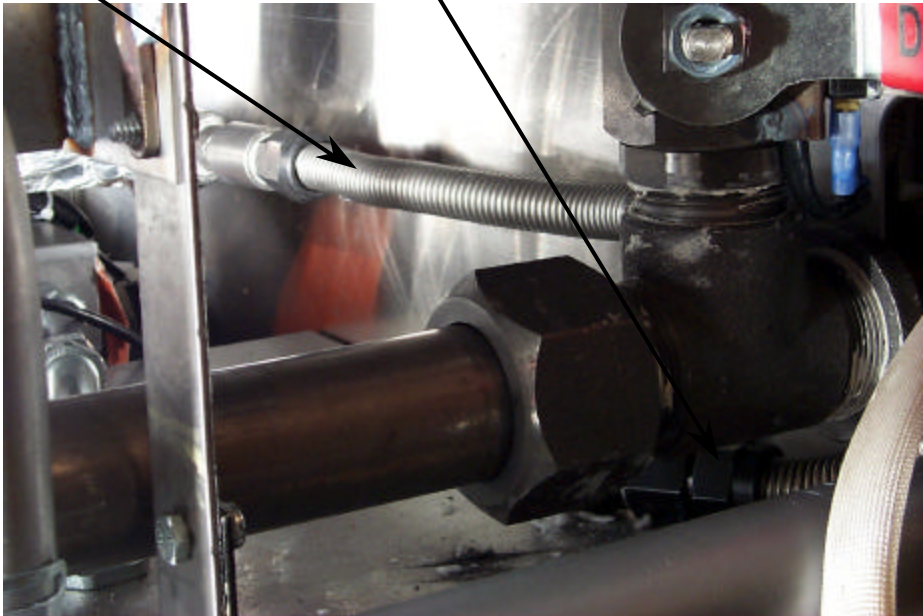
Tighten the drain nut.



Connect the H50 and 24G oil return wire connectors together. Route H50 oil return flex-line between H50 and 24G drainpipes.

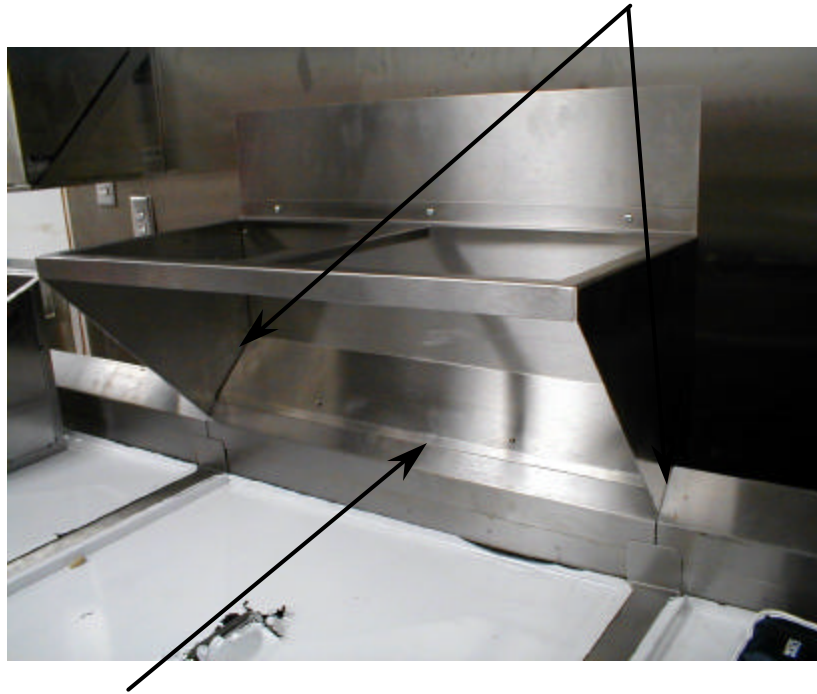


Connect 24G oil return flex-line to H50 flex-line.



Install the "Over-The-Fryer" Crumb Dump.

Slide assembly into appropriate slots in flue.

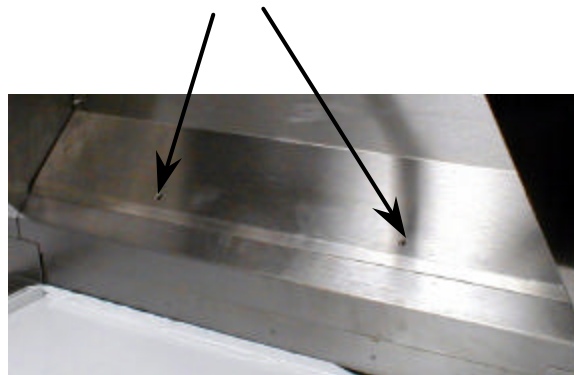


Ensure lip goes over flue cap, not under.

Replace hardware on rear, and install hardware on front of crumb dump.



Rear



Front

After gas is connected by a qualified technician, perform boil-out procedures as outlined in the manual. Ensure frypots are coated with oil immediately after boiling out to prevent rust.





Frymaster, L.L.C. & Dean, 8700 Line Avenue, PO Box 51000, Shreveport, Louisiana 71135-1000
Shipping Address: 8700 Line Avenue, Shreveport, Louisiana 71106

TEL 1-318-865-1711

FAX (Parts) 1-318-219-7140

(Tech Support) 1-318-219-7135

PRINTED IN THE UNITED STATES

SERVICE HOTLINE
1-800-551-8633

Price: \$6.00
819-5866
10-01