

1. Menu Selection



Menu Key

- Press the menu key to scroll to the desired menu: Breakfast, Lunch, Special 1, Special 2, Special 3.
- With the desired menu displayed, release menu key and immediately press the temperature key.
- Selection is locked.

2. Timer Operation



Timer Keys

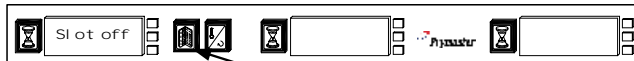
- Press the timer key adjacent to the slot where product has been placed.
- The timer counts down; the display alternates between product name and remaining hold time.
- When slots hold the same products, the slot with the least remaining hold time is indicated by a brighter display and illuminated dots. Press the timer key to turn a timer off. The display dims and the use-first indicator moves to the next appropriate slot.

3. Cook More Prompts



- The prompt sounds prior to the expiration of the last tray of a specific product.

4. Turning Slots OFF



Menu Key

- Press the menu key until Slot Off is displayed and release. Immediately press the temperature key.

5. Uploading Data to Palm



Menu Key

- Hold Palm one foot from cabinet front and with any cabinet configuration screen displayed, tap the receive button.
- Tap Rx Logs button.
- Daily activity logs are beamed to the Palm.

Note: A prompt for uploading data occurs when the cabinet is switched to clean mode. It can be bypassed if the data were previously uploaded.

6. Using Clean Mode



Menu Key

- Press the menu key until Clean Mode is displayed and release; immediately press the temperature key.
- Palm upload is displayed, which is covered under Section 5. Press temperature key to move to Clean Mode.
- All displays change to clean mode and alternate between Slot Clean Mode and Not Safe Yet until the temperature of the slot reaches 125°F (52°C).
- The display changes to Safe to Clean.
- Exit Clean Mode on each slot by pressing the menu key until the desired menu is displayed and release; immediately press the temperature key.

7. Temperature Display



Temperature Key

- Press the temperature key four times, which displays temperatures in this sequence:
 - Top plate current temperature.
 - Bottom plate current temperature.
 - Top plate setpoint.
 - Bottom plate setpoint.

Configuring a Cabinet with Palm Pilot Software



Tap on setup and highlight the desired menu from the dropdown menu by tapping it



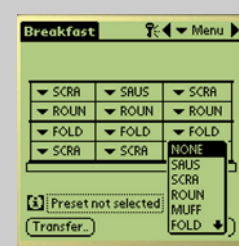
A graphic of the UHC-P cabinet is displayed.



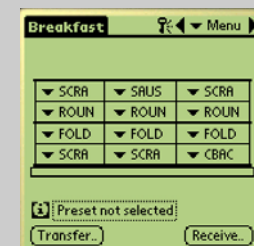
Tap the triangle icon on a leftmost slot position and choose a product. Product in the adjoining slots must have compatible setpoints.



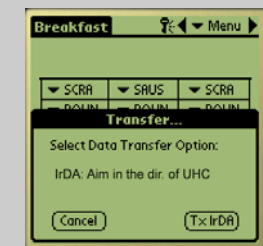
This display indicates products with incompatible setpoints have been chosen.



Choose products for each slot. Repeat steps to configure for each of the additional menus: lunch and specials 1-3.



With all menus configured, hold the Palm horizontal above the floor and within one foot of the receiving lens on the UHC-P cabinet.



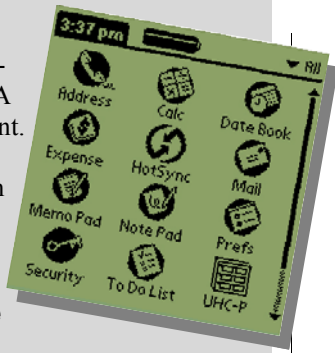
Tap transfer button. Transfer menu is displayed. Tap TxirDa. The cabinet beeps. Palm displays a successful transfer message. All five of the cabinet's configurations are updated.

New to the Palm?

The Palm Pilot used to program the UHC-P is a PDA or personal digital assistant.

It can contain many programs. Find the UHC-P icon on the Palm Pilot's main screen and tap it to launch the UHC-P software.

- **Opening the Palm Software is covered on Page 4-1 of the manual.**



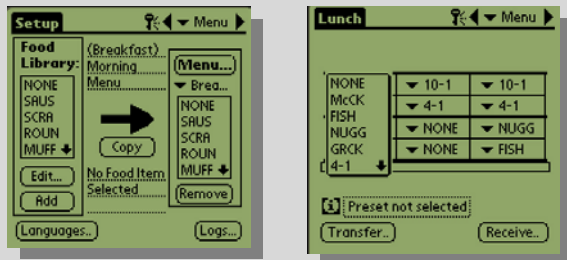
First Step After Loading Software



A language choice must be entered on newly loaded software to populate the food library. This is a two-step process that requires the entry of a password. Access the password window by tapping the Key icon (above left). Choose a language by tapping the Language button (above right).

- **Entering a password is covered on Page 5-1 of the manual, language choice on Page 7-1.**

Principal Programming Screens



There are two principal screens used to create and position food items. The setup screen (left above) is where items are moved into menus. The menu screen (above right) allows configuration of the cabinet.

- **The screens are annotated on Pages 3-5 and 3-6 of the manual.**

FAQ

Why does the Palm Pilot have to be kept on a charger?

If the Palm's battery is allowed to go dead, the accessory software, such as the UHC-P program, is lost and must be reloaded.

Where can I get another copy of the UHC-P software?

A program CD is provided with the cabinet. The software can also be downloaded from Frymaster.com. Instructions for downloading and installing software are on Page 9-2 of the manual.

I've loaded software on my Palm Pilot. Why are there no items in the Food Library?

You must choose the language the Palm is to display. This is a two-step process, which is covered briefly on this quick-reference and on Pages 5-1 and 7-1 of the manual.

Can the software save cabinet configurations for multiple cabinets?

Yes. The software has a preset feature that allows cabinet configurations to be saved, named and stored for multiple cabinets or special promotions. This feature is explained on Page 6-1 of the manual.



Quick Reference

UHC-P

Meal and Product Step Guide

