

## Instruction Sheet

Follow these instructions to replace  
a Touch Screen Controller.

318-865-1711

800-551-8633

[WWW.FRYMASTER.COM](http://WWW.FRYMASTER.COM)

EMAIL: [FRYSERVICE@FRYMASTER.COM](mailto:FRYSERVICE@FRYMASTER.COM)

**Subject: 8263619 UHCTHD Touch Screen  
Replacement Kit Instructions**

**Models affected: UHCTHD Holding Cabinets**

In This Kit		
Part #	Description	Qty
8076435	UI, MERCO UX	1
8122590	SD CARD, UHC-T <b>PRIMARY (FRONT)</b>	1
8122623	SD CARD, UHC-T <b>SECONDARY (REAR)</b>	1
8076328	CABLE, COMM CROSSOVER NO DC	2
8076441	CABLE, UHC-T UI TO UI	1
8076425	HARNESS, DC UHC-T	1
8197846	INSTRUCTIONS	1
8197667	UHCTHD IO MANUAL	1

1. Disconnect power from the unit.
2. Remove the top cover of the cabinet by removing the four (4) Phillips head screws that attach the cover (see Figure 1).
3. Disconnect all cables from the failed touch screen controller (see Figure 2).
4. Using a Phillips screwdriver (or 7mm nut driver for some units), remove the eight (8) screws/bolts attaching the retaining frame to the rear of the controller (see Figure 3).
5. Push in on the two (2) black tabs to release the controller from the retaining frame (see Figure 4). The controller is removed from the outside of the cabinet (see Figure 5).
6. It may simplify the process to take the controller to another area of the restaurant to remove the Micro SD card.
7. The Micro SD card is located inside a slot, on the top right corner of the rear of the display (see Figure 6).
8. The Micro SD card is spring loaded. If necessary, use tweezers to gently push in on the Micro SD card and release until the Micro SD card is slightly ejected (see Figures 7 and 8).



Figure 1

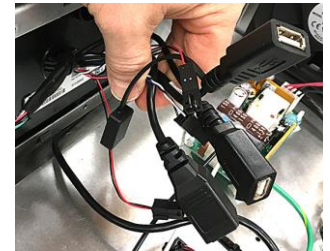


Figure 2

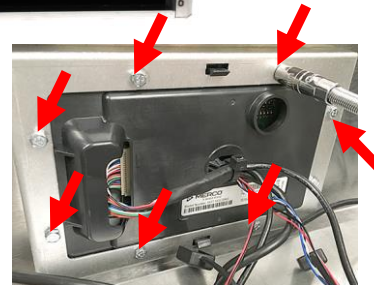


Figure 3



Figure 4



Figure 5



Figure 6

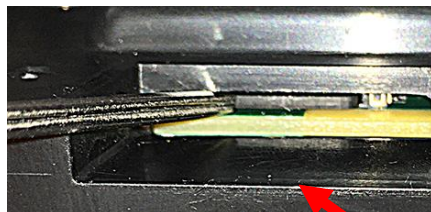


Figure 7

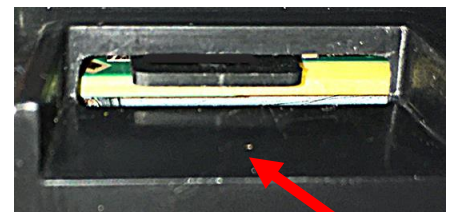


Figure 8

9. If necessary, use tweezers to remove the Micro SD card (see Figure 9) from the old controller.

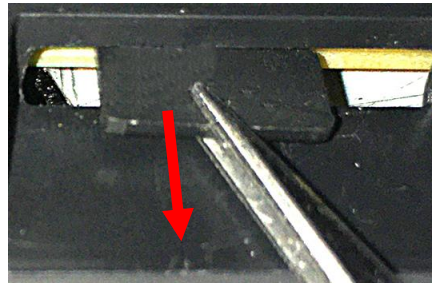


Figure 9

10. Insert the Micro SD card with contacts down towards the board (see Figure 10) into the new controller. Gently push the Micro SD card into the SD card slot until it locks in place (see Figure 11).

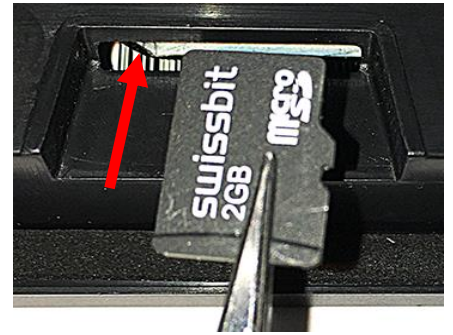


Figure 10

11. Replace the four (4) (CAN, IO and Power) cables with the included (4) **NEW** (CAN, IO and Power) cables.

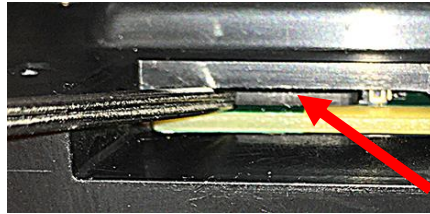


Figure 11

12. Reverse steps 3 – 5 to reattach the controller.



13. Reconnect power and turn on the power switch.

14. If the new controller powers up and fully boots, go to step 15. If the new controller **DOES NOT** boot up, check to ensure the SD card is correctly inserted. If so, the Micro SD card may be damaged or corrupt and requires replacement. Power off the cabinet and follow steps 3-12 to replace the Micro SD card with a new Micro SD card.

Firmware Versions	
Board	Version
UI (Primary)	UX-2605
I/O board	0.5.0

Figure 12

**NOTE: The supplied Micro SD cards are controller specific. The individual Micro SD cards ARE NOT labeled; however, the BAGS ARE LABELED with the specific controller location of the Micro SD card. Remove only ONE (1) SD card from the bag at a time to avoid confusion. Use the Micro SD card PN# 8122590 in the bag labeled PRIMARY if replacing the Micro SD card in the FRONT controller. Use the Micro SD card PN# 8122623 in the bag labeled SECONDARY if replacing the Micro SD card in the REAR controller.**

15. Once the cabinet is powered up and fully booted up, check the software versions on **BOTH** controllers by pressing the  button. Press the  button. Swipe two times to the right to **System Information**. Verify the UI software versions **MATCH on BOTH controllers**. If the software version on **BOTH** controllers **DO NOT** match, replace the SD cards in both controllers. The latest controller software version is **UX-2605**. The IO software version should be **0.5.0** (see Figure 12). Ensure **Primary** is displayed on the **FRONT** controller and **Secondary** on the **REAR** controller. **To update to the latest version, both controllers will need the supplied SD cards installed to update BOTH controllers.**

16. Press the  button.

Press



17. Press the  button.

18. Reattach the top and return the cabinet to service.

19. It may be necessary to enter the serial # and model # from the rating plate (see Figure 13).

Figure 13

20. It may be necessary to reassign locations of products, add new products, load menus, change settings, etc. before leaving the location. Check with store manager for any special products. See enclosed manual for details.

21. If the configuration needs to be reset follow these steps:
22. Press the  button. Press the  button. Swipe to the left to **Utilities**.
23. Press and hold the easyTouch logo in the lower right corner for 10 seconds. The controller displays Reset Configuration. Press the GREEN checkmark button. (see Figure 14).
24. Power cycle the cabinet.
25. After the cabinet boots up, the controller displays the orientation screen (see Figure 15). Select the arrow which matches the orientation of the screen.

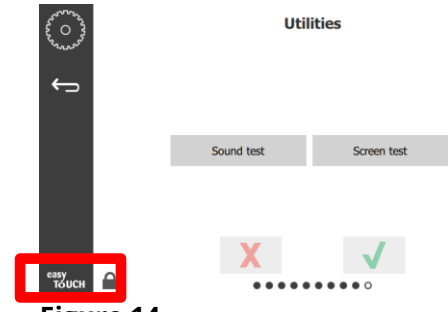


Figure 14

26. The controller displays the model # configuration screen (see Figure 16).

**Orientation**  
Which way is up on the touchscreen?

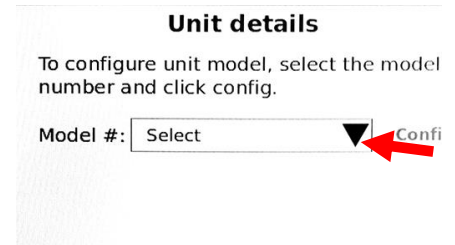


Figure 16

27. Press the down arrow (see Figure 16)
28. Select the correct configuration for the cabinet configuration (see Figure 17). Choose UHCTHD3SP for 3-row Single Sided; Choose UHCTHD3TP for 3-row Double Sided; Choose UHCTHD6SP for 6-row Single Sided; Choose UHCTHD6TP for 6-row Double Sided.

Figure 15

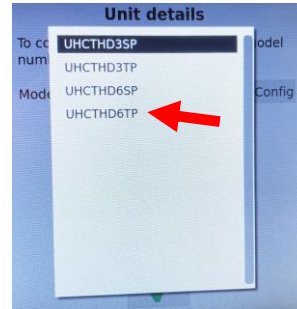


Figure 17

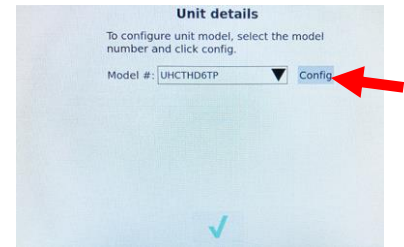


Figure 18

29. Once the model is selected, press the **Config** button (see Figure 18).
30. Choose Front or Back for the location of the controller.

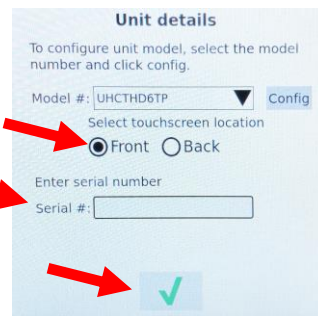


Figure 19

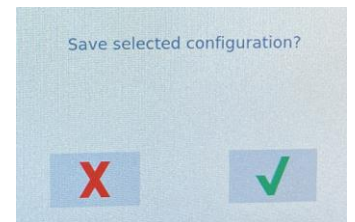


Figure 20

31. Press the Serial # field and use the keyboard to enter the serial number of the cabinet. When finished press the return key and the GREEN checkmark (see Figure 19).

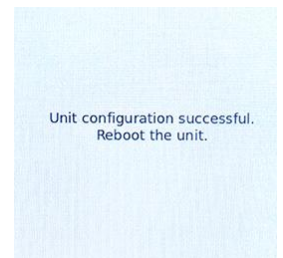


Figure 21

32. The controller displays **“Save selected configuration?”** Press the green checkmark button to continue (see Figure 20). If another display on the cabinet needs to be configured, repeat steps 21a-21k on that display.
33. The controller displays **“Unit configuration successful. Reboot the unit.”** (see Figure 21). Power cycle the cabinet by switching OFF the power switch for five (5) seconds and switching back on.