

Frymaster®

We Fit the Way You Fry™

BIELA14-T Series Gen III LOV™ Electric Fryer



Parts Manual

This manual is updated as new information and models are released. Visit our website at www.frymaster.com for the latest manual.



FOR YOUR SAFETY

Do Not Store or use gasoline or other flammable vapors and liquids in the vicinity of this or any other appliance.



Part Number: FRY_P_8197342 12/2024

Original Instructions



NOTICE

IF, DURING THE WARRANTY PERIOD, THE CUSTOMER USES A PART FOR THIS FRYMASTER DEAN EQUIPMENT OTHER THAN AN **UNMODIFIED** NEW OR RECYCLED PART PURCHASED DIRECTLY FROM FRYMASTER DEAN, OR ANY OF ITS FACTORY AUTHORIZED SERVICERS, AND/OR THE PART BEING USED IS MODIFIED FROM ITS ORIGINAL CONFIGURATION, THIS WARRANTY WILL BE VOID. FURTHER, FRYMASTER DEAN AND ITS AFFILIATES WILL NOT BE LIABLE FOR ANY CLAIMS, DAMAGES OR EXPENSES INCURRED BY THE CUSTOMER WHICH ARISE DIRECTLY OR INDIRECTLY, IN WHOLE OR IN PART, DUE TO THE INSTALLATION OF ANY MODIFIED PART AND/OR PART RECEIVED FROM AN UNAUTHORIZED SERVICER.

NOTICE

This appliance is intended for professional use only and is to be operated by qualified personnel only. A Frymaster Authorized Servicer (FAS) or other qualified professional should perform installation, maintenance, and repairs. Installation, maintenance, or repairs by unqualified personnel may void the manufacturer's warranty.

Table of Contents

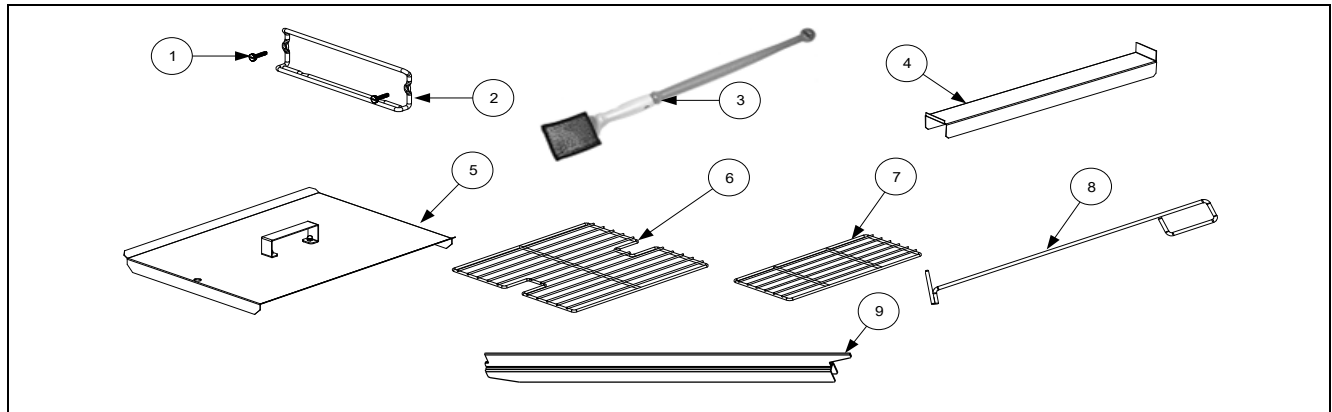
CHAPTER 1: Parts List

1.1	Accessories.....	1-1
1.2	Control Panel Frame Assemblies	1-1
1.3	Doors, Sides, Tilt Housings, Cap-N-Splash, Top Caps and Casters.....	1-2
1.4	Drain System Components	1-3
1.5	Electronics and Electrical Components	1-4
1.5.1	Component Boxes and Associated Components.....	1-4
1.5.2	Contactors Boxes	1-6
1.5.3	Heating Element Assemblies and Associated Parts	1-7
	1.5.3.1 Element Assemblies and Hardware.....	1-7
	1.5.3.2 Element Tube Assemblies.....	1-9
1.5.4	FIB (Filtration Interface Board) Filter and Top Off Box Components	1-10
1.5.5	VIB (Valve Interface Board) Components	1-11
1.5.6	USB Connector.....	1-11
1.5.7	Wiring.....	1-12
	1.5.7.1 Contactor Box Wiring Assemblies – 12-Pin Dual-Vat C-1.....	1-12
	1.5.7.2 Contactor Box Wiring Assemblies – 12-Pin Full-Vat C-1	1-12
	1.5.7.3 Contactor Box Wiring Assembly – 6-Pin (Left Element).....	1-13
	1.5.7.4 Contactor Box Wiring Assembly – 9-Pin (Right Element).....	1-13
	1.5.7.5 Main Wiring Harnesses	1-14
	1.5.7.6 Component Box Wiring Harnesses.....	1-15
	1.5.7.7 FIB Box Wiring Harness.....	1-16
1.6	Frypot Assemblies and Associated Parts.....	1-17
1.7	Oil Return Manifolds.....	1-18
1.8	Filtration System Components	1-19
1.9	ATO (Auto Top Off) Components.....	1-21
	1.9.1 JIB Cradle, JIB Cap and Pick-Up Assembly and JIB (ATO) Reset Switch	1-21
	1.9.2 ATO Pump Assembly.....	1-22
1.10	Shortening Melting Unit	1-23
1.11	Bulk Dispose and Fresh Oil	1-24
	1.11.1 Bulk Dispose and Fresh Oil Manifold and Accessories.....	1-24
	1.11.2 Bulk Dispose Waste Valve.....	1-26
1.12	Oil Quality Sensor (OQS) and Associated Parts	1-27
1.13	Wiring Connectors, Pin Terminals and Power Cords	1-28
1.14	Fasteners	1-29
1.15	Itto Can /Front Dispose Components Japan only.....	1-30

BIELA14-T SERIES GEN III LOV™ ELECTRIC FRYERS

CHAPTER 1: PARTS LIST

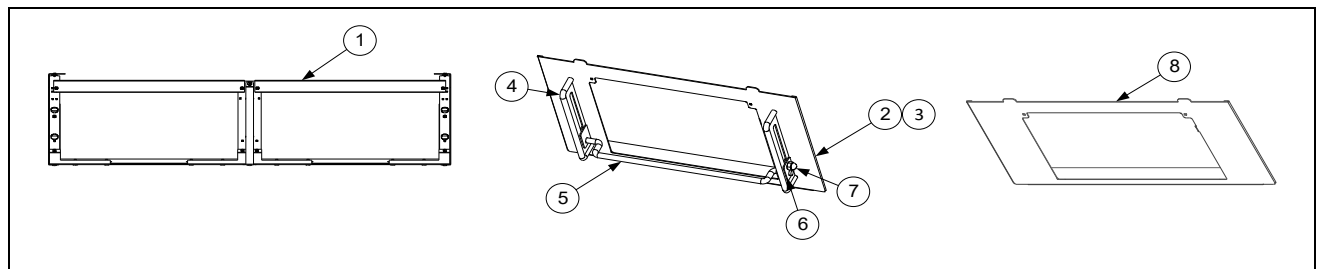
1.1 Accessories



ITEM	PART #	COMPONENT
1	8090171	Thumbscrew, ¼ -20 X 1¾-inch Universal Hood
	8090402	Thumbscrew, ¼ -20 X ½-inch Cap-N-Splash Hood
2	8102793	Hanger, Basket
*	8090921	Spacer, Basket Hanger
3	8030430	Brush, Frypot Ecolab
4	8238963	Connecting Strip, Frypot
5	8238899	Cover, Full-Vat Frypot
	8238900	Cover, Dual-Vat Frypot
6	8030132	Rack, Full-Vat Basket Support
7	8030106	Rack, Dual-Vat Basket Support
8	8030388	Element Lift / Fryers Friend LOV™
9	8242174	Riser, LOV Electric DV Frypot

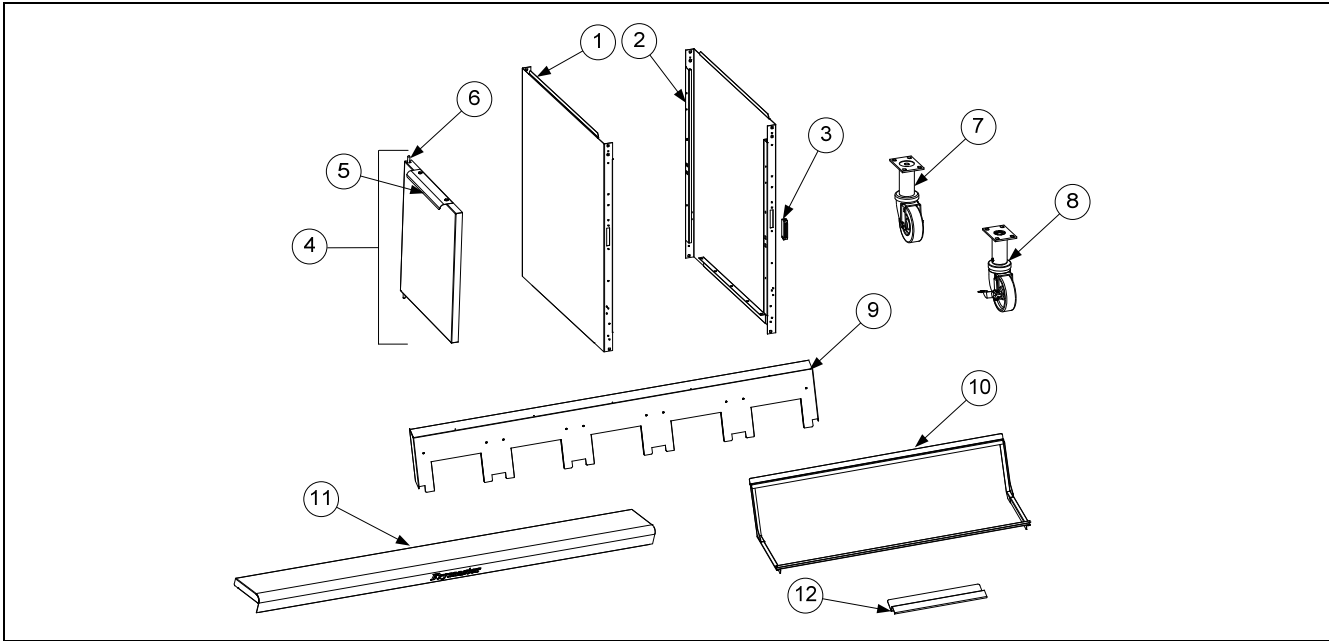
*Not illustrated.

1.2 Control Panel Frame Assemblies



ITEM	PART #	COMPONENT
1	1088340	Frame Assembly, Control 2-Battery 10° (after 12/2018)
	1087710	Frame Assembly, Control 2-Battery (prior to 01/2019)
	1087711	Frame Assembly, Control 3-Battery (prior to 01/2019)
	1088362	Frame Assembly, Control 3-Battery 10° (after 12/2018)
	1087712	Frame Assembly, Control 4-Battery (prior to 01/2019)
	1088359	Frame Assembly, Control 4-Battery 10° (after 12/2018)
	1088360	Frame Assembly, Control 5-Battery 10° (after 12/2018)
2	1087744	Bezel Assembly, Control FQ4000 (prior to 04/2022)
3	2602083	Bezel, Single Touchscreen FQ
4	8104898	Guide, Controller Adjustable Guard
5	8104899	Bar, Guard (Touch Screen Protection)
6	8104714	Plate, Outside Tightening
7	8090047	Nut, Cap ¼-20
8	130000371	Bezel Assembly, Control FQ4000 (after to 03/2022)

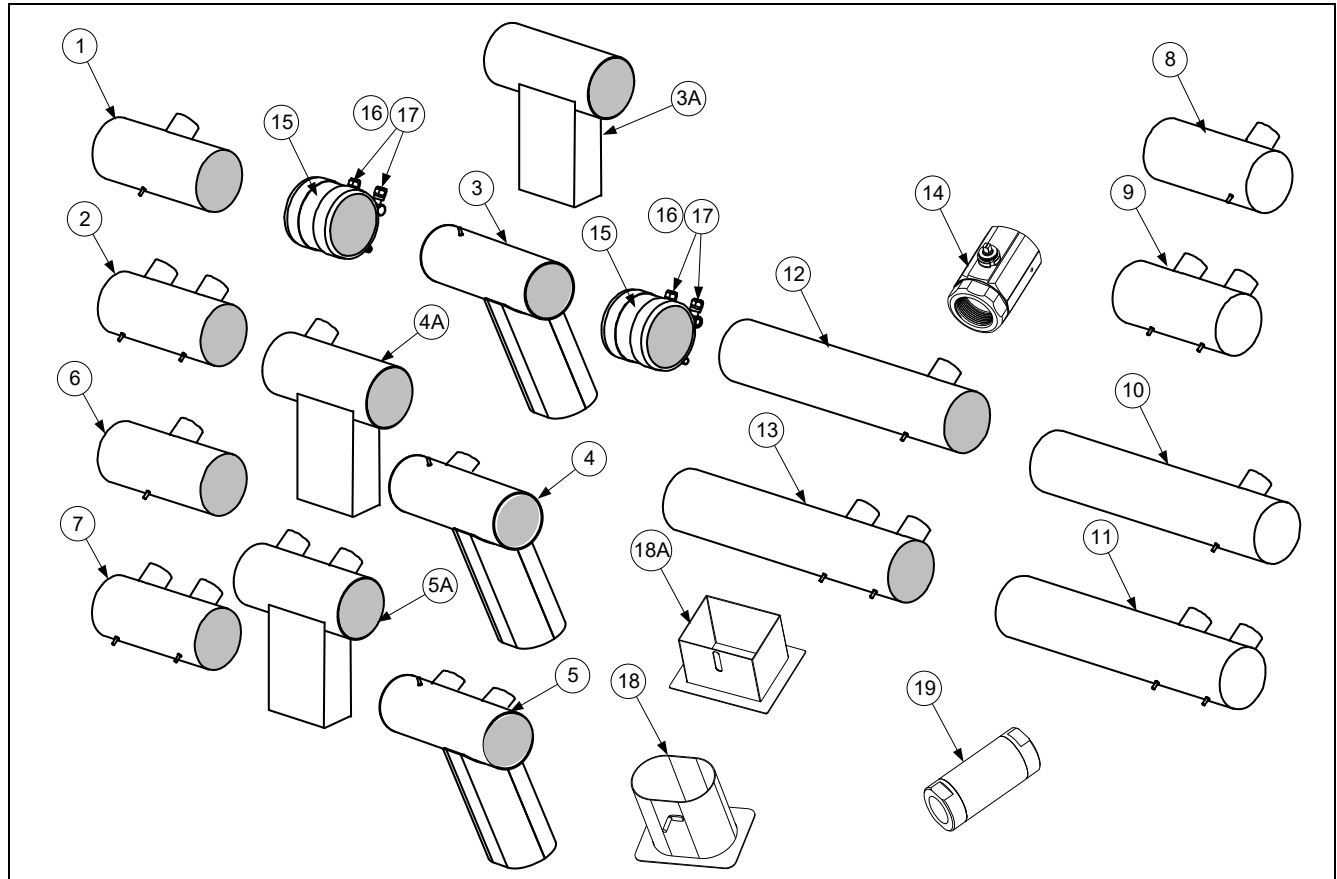
1.3 Doors, Sides, Tilt Housings, Cap-N-Splash, Top Caps and Casters



ITEM	PART #	COMPONENT
1	130000552	Side, Cabinet Left (after to 02/2022)
	2310323	Side, Cabinet Left (prior to 03/2022)
2	130000553	Side, Cabinet Right (after to 02/2022)
	2320323	Side, Cabinet Right (prior to 03/2022)
3	8101105	Magnet, Door
4	1080915	Door, Left or Right (Left shown - move handle to bottom for right)
5	2304960	Handle, Eurolook Door
6	1064067SP	Pin Assembly, Door
*	8100275	Spring, Door Pin
*	8100658	Retaining Ring
*	2307192	Hinge, Door Lower
*	2206097	Holder, Manual
7	8100327	Caster without Brake
8	8100326	Caster with Brake
9		Tilt Housing (Housing for five station fryer shown)
	8236085	Two Station, S/S (Use 9102441 for Hood Strip)
	8235700	Three Station, S/S (Use 9102440 for Hood Strip)
	8236151	Four Station, S/S (Use 9102439 for Hood Strip)
	8236243	Five Station, S/S (Use 9109447 for Hood Strip)
10		Cap-N-Splash Assemblies
	8239151	Two Station Fryer
	8239152	Three Station Fryer
	8239153	Four Station Fryer
	-	Five Station Fryer
11		Top Cap (Top cap for five station fryer shown)
	1087416SP	Two Station Fryer (Req 4- 8090078 10-32 Nutserts)
	1087417SP	Three Station Fryer (Req 4- 8090078 10-32 Nutserts)
	1087418SP	Four Station Fryer (Req 4- 8090078 10-32 Nutserts)
	1087419SP	Five Station Fryer (Req 4- 8090078 10-32 Nutserts)
12	2601128	Guard, Cap/Splash Wave

* Not illustrated.

1.4 Drain System Components

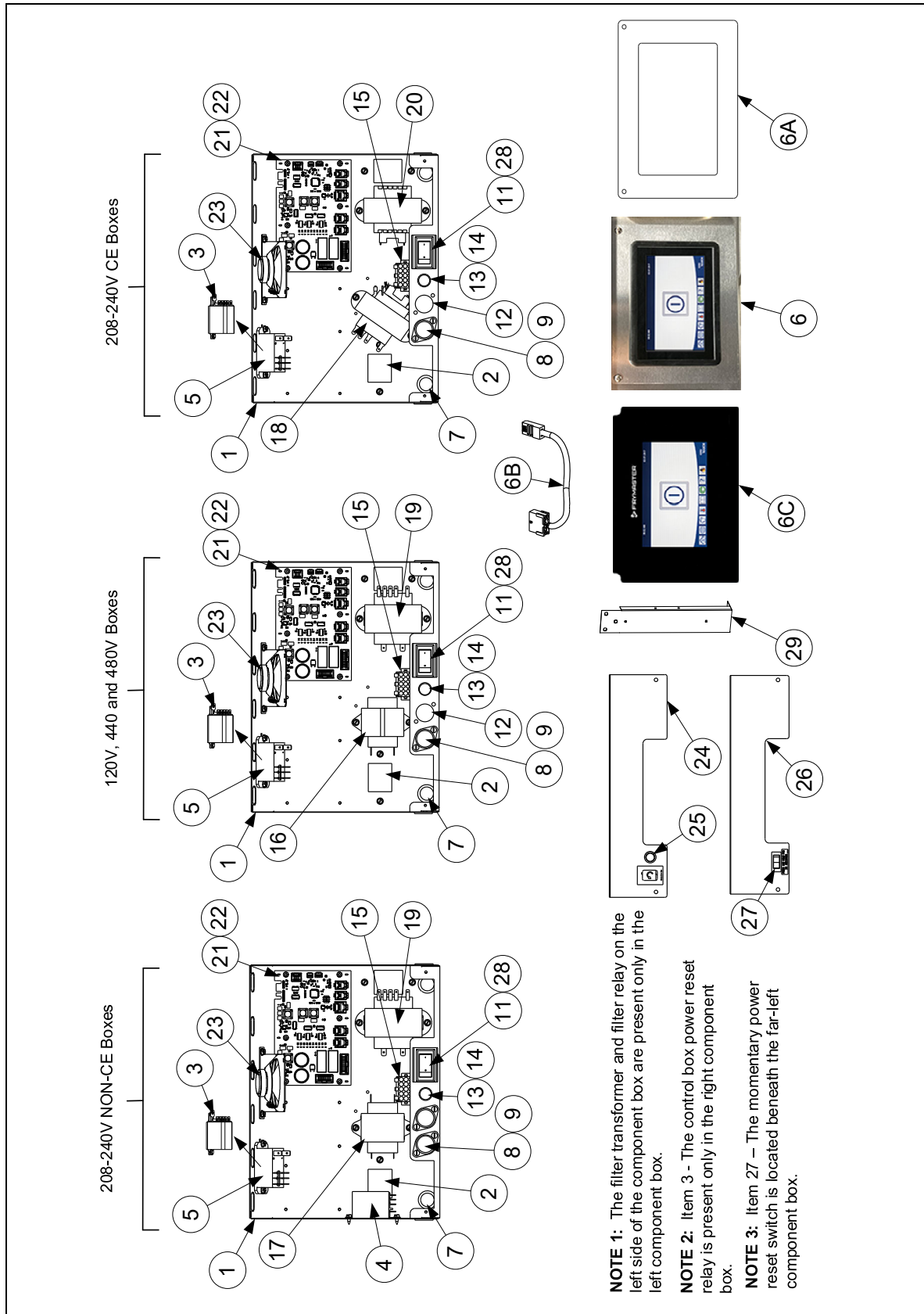


ITEM	PART #	COMPONENT
1	8236020	Drain Tube, Full-Vat Left Closed/Right End Open
2	8236112	Drain Tube, Dual-Vat Left Closed/Right End Open
3	1085842	Drain Tube, Dump (Use 1081882 for French Unit) (Oval)
3A	130000624	Drain Tube, Dump (Square)
4	1085806	Drain Tube, Dump Full-Vat 2 Bat. Dump Left Closed/Right End Open (Oval)
4A	130033447	Drain Tube, Dump Full-Vat 2 Bat. Dump Left Closed/Right End Open (Square)
5	1085854	Drain Tube, Dump Dual-Vat 2 Bat. Dump Left Closed/Right End Open (Oval)
5A	130000620	Drain Tube, Dump Dual-Vat 2 Bat. Dump Left Closed/Right End Open (Square)
6	8236019	Drain Tube, Full-Vat Left and Right Open
7	8236021	Drain Tube, Dual-Vat Left and Right Open
8	8236240	Drain Tube, Full-Vat 2 Bat. Left Open/Right End Closed
9	8236242	Drain Tube, Dual-Vat 2 Bat. Left Open/Right End Closed
10	8236202	Drain Tube, Full-Vat Left Open/Right End Closed
11	8236114	Drain Tube, Dual-Vat Left Open/Right End Closed
12	8236117	Drain Tube, Full-Vat Left and Right Open
13	8236115	Drain Tube, Dual-Vat Left and Right Open
14	8104353	Valve, 1¼-inch NPT Rotary Actuator
15	8160772	Sleeve
16	8090969	Clamp 3.00" T-Bolt
17	8160665	Vinyl Cap .218 x 500
18	8237685	Guard, Pan Splash Lid Oval (3/4/5 Vat Fryers)
	8237915	Guard, Pan Splash Lid Oval (2-Vat Fryer)
18A	130033732	Guard, Pan Lid Splash (Square)
19	8105084	Valve, Check 20 PSI RTI bypass

* Not illustrated.

1.5 Electronics and Electrical Components

1.5.1 Component Boxes and Associated Components



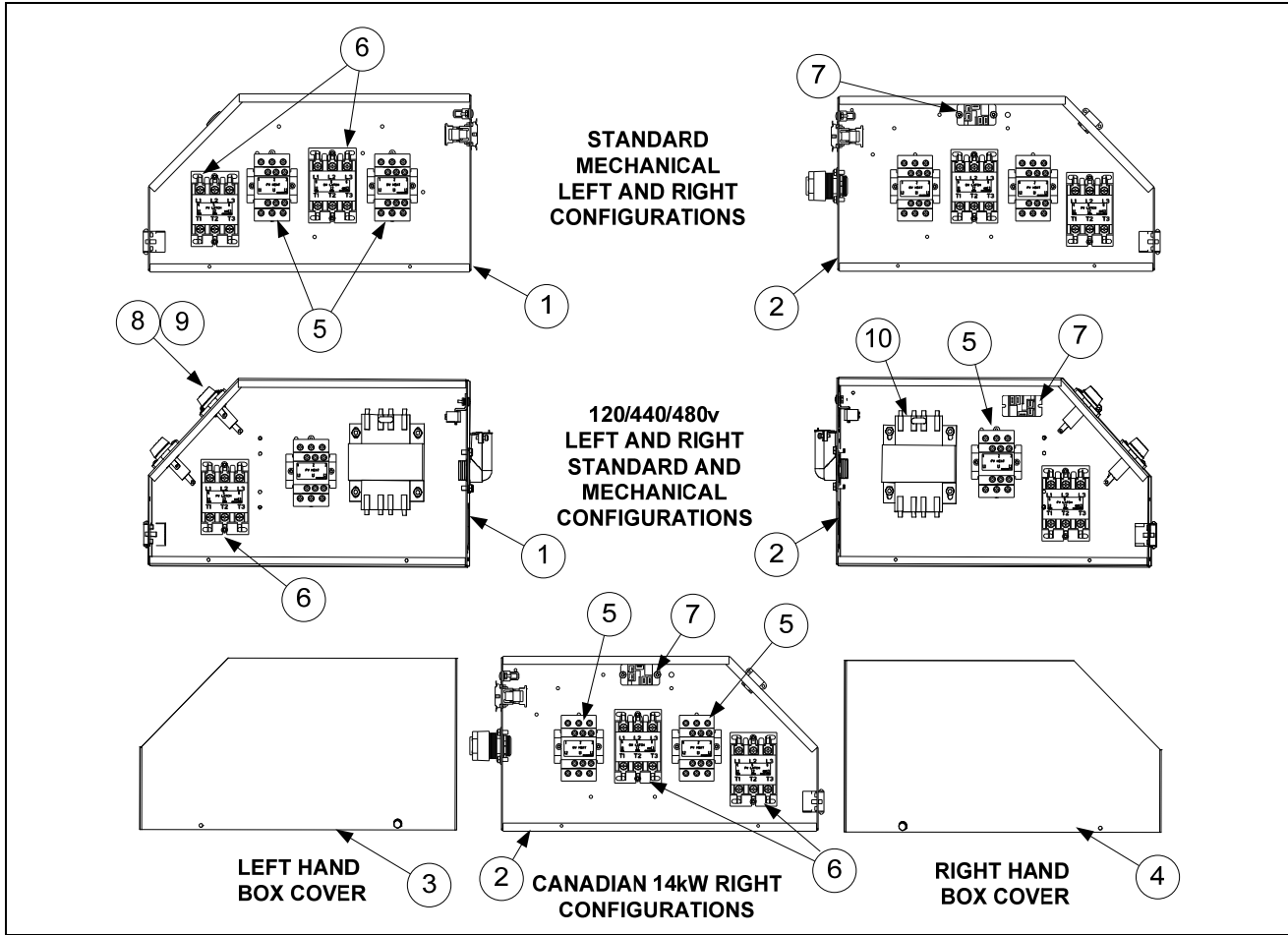
1.5.1 Component Boxes cont.

ITEM	PART #	COMPONENT
1	1087745	Box Assembly, Component
2	2200833	Plate, Component Box Strain Relief
√ 3	8074346	Relay, DPDT 20A 120V <i>(used for control power reset in right hand boxes only in domestic and Canadian units)</i>
	8074770	Relay, DPDT 20A 240V <i>(resets control power; right hand boxes only in international units; one in each control box in some units.)</i>
√ 4	8074346	Relay, 120V DPDT 20A <i>(used in Canadian models only)</i>
√ 5	8074482	Relay, Filter 2 Pole 30A DPDT 24VDC
√ 6	1089233SP	Controller, M4000 Domestic USA, Canada <i>(for fryers manufactured from 04/2022 to present)</i>
	1089239SP	Controller, M4000 International CE Electric <i>(for fryers manufactured from 04/2022 to present)</i>
	1089245SP	Controller, M4000 Israel <i>(for fryers manufactured from 04/2022 to present)</i>
	1089229SP	Controller, M4000 Japan <i>(for fryers manufactured from 04/2022 to present)</i>
6A	130000329	Bezel, Common UI <i>(Metal Bezel only)</i>
6B	8076596	4000 Xfer Cable <i>(Connects Common UI Controller to SIB Board)</i>
√ 6C	1086730SP	Controller, M4000 Domestic USA, Canada <i>(for fryers manufactured prior to 04/2022)</i>
	1088437SP	Controller, M4000 International CE <i>(for fryers manufactured prior to 04/2022)</i>
	1088467SP	Controller, M4000 Israel <i>(for fryers manufactured prior to 04/2022)</i>
	8263658	Controller, M4000 Japan <i>(for fryers manufactured prior to 04/2022)</i>
*	8104320	Lanyard, Controller Restraint
7	8100045	Bushing, .875 Diameter 11/16"
8	8070922	Holder, Buss Fuse HPS Screw Type
9	8072278	Fuse, 20 Amp
10	8102446	Plug, Button .50 Heyco Double "D"
√ 11	8074036	Switch, Power
	8073575	Plug, Carling Switch Hole <i>(used on some models without a switch)</i>
12	8071947	Plug, Button .875 Dome
13	8071321	Holder, Fuse <i>(Some models use item 10 here.)</i>
14	8075570	Fuse, 3.5 AMP 250V Fast Acting
15	8075951	Harness, Elec Full Vat Controls SIB J1 to Components
	8075952	Harness, Elec Dual Vat Controls SIB J1 to Components
√ 16	8070800	Transformer, 120V/24V 50VA Filter
√ 17	8070680	Transformer, 208/240V/24V 43VA Filter (Non-CE)
√ 18	8072180	Transformer, 208-240V/24V 50VA Filter (CE, Australia & Korea)
√ 19	8075362	Transformer, 115-240V/24V 80VA
√ 20	8071022	Transformer, 208/240V/24V 75VA (CE, Australia & Korea)
√ 21	1085979	Board, Interface SIB (Smart Interface Board)
22	8090349	Spacer, 4mm X 6mm Aluminium
23	8075829	Speaker, 4 ohms
24	2401735	Guard, Finger JIB Reset
25	8074678	Switch, Momentary JIB Reset <i>(resets ATO; located above JIB/BIB)</i>
26	2401734	Guard Elec. with reset
27	8072659	Switch, Momentary <i>(resets control power; located below left component box)</i>
28	2305038	Guard, RE Box Switch
29	2006654	Brace, Component Box
		See Wiring Diagrams in BIELA14-T Wiring Diagrams Manual for cable locations
*	8075553	Cable, P-Bus Left SIB to Right SIB
*	8075555	Cable, P-Bus w/ power Right SIB to VIB (Valve Interface Board)
*	8075551	Cable, C-Bus Right SIB to FIB (Filtration Interface Board)
*	8075549	Cable, C-Bus Right SIB to Right SIB (Connects component boxes together)
*	8076106	Adapter, RJ11 CAN SIB (J8) to Legacy 6-pin (Micro Mate/Lock) CAN (OQS sensor to SIB 5")
*	8074552	Terminator, CAN (ONLY used on OQS harness Y- adaptor)
√ *	8075632	Terminator, CAN End Communication RJ11 (used in SIB J8 if OQS is NOT installed)

* Not illustrated.

√ Recommended parts.

1.5.2 Contactor Boxes



NOTES: Left and right contactor box assemblies are mirror images of one another. With the exception of the box itself, all components of a left-hand assembly are the same as those in the corresponding right-hand assembly and vice versa except for the hood relay which occurs in the right or large box only. The configurations illustrated show all possible components, but a configuration may not have all the components shown.

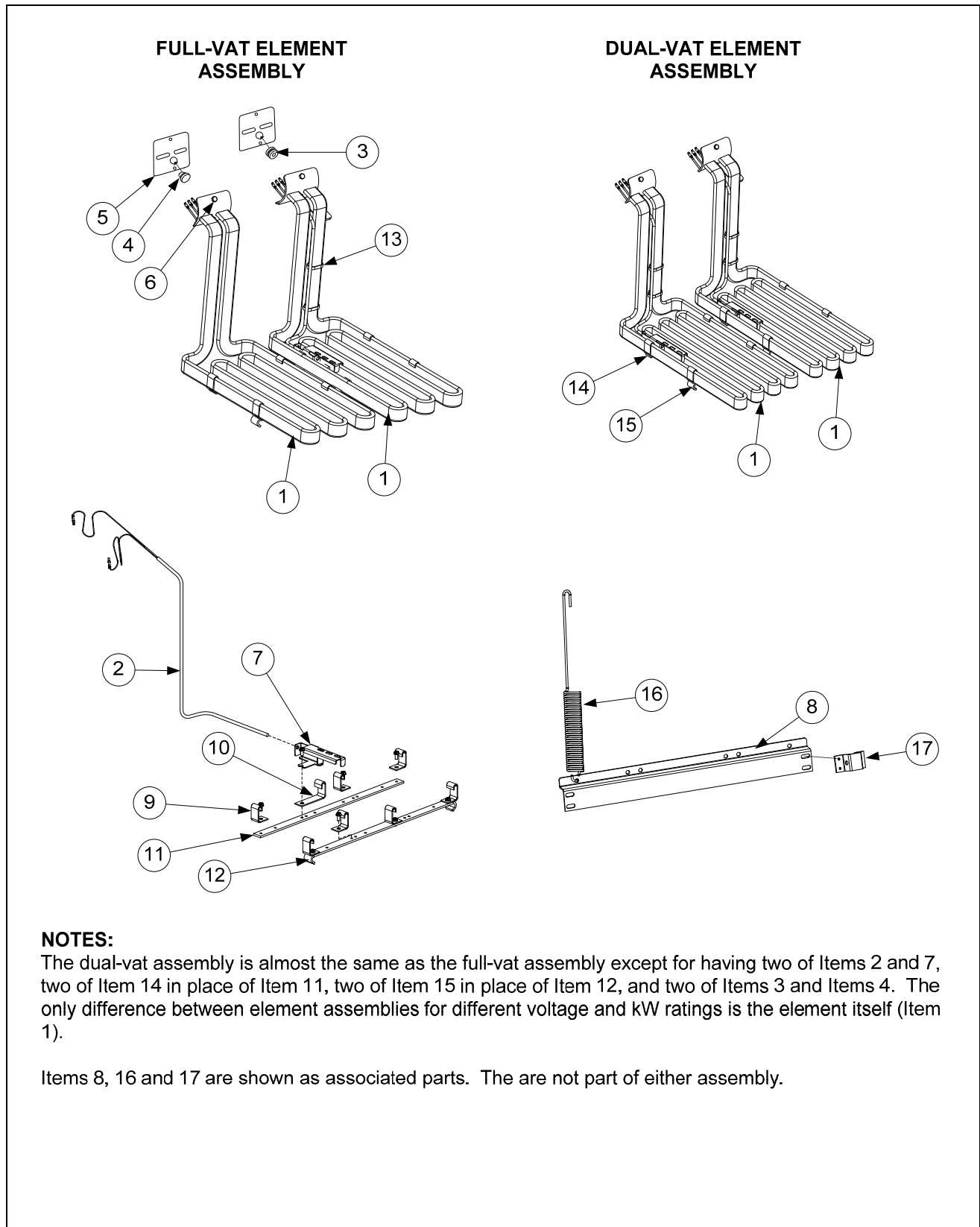
ITEM	PART #	COMPONENT
1	1068659	Box Assembly, Left Contactor
2	1068661	Box Assembly, Right Contactor
3	2210482	Cover, Left Hand Contactor Box
4	2220482	Cover, Right Hand Contactor Box
*	8070070	Terminal, Ground Lug
√ 5	8263417	Contactor, 24V 50 Amp TESS LC1D32B7 (<i>Heat</i>)
√ 6	8101202	Contactor, 24V 40 Amp (<i>Latch</i>)
7	8071683	Relay, Hood 12VDC
8	8070922	Holder, Bus Fuse
9	8072278	Fuse, 20 Amp
10	8070064	Transformer, 480V/120V 150VA
*	2210610	Bracket, Left Hand Contactor Box Mounting
*	2220610	Bracket, Right Hand Contactor Box Mounting
See Section 1.13 for Power Cords		
*	130000664	Wire, Assy, Diode Connector (<i>Internal</i>)
*	8263720	Harness, Adapter TVS Diode Kit (<i>External</i>)
*	8070012	Relay, Tilt Switch 18 Amp 1/3 HP 24 V Coil

* Not illustrated.

√ Recommended parts.

1.5.3 Heating Element Assemblies and Associated Parts

1.5.3.1 Element Assemblies and Hardware



NOTES:

The dual-vat assembly is almost the same as the full-vat assembly except for having two of Items 2 and 7, two of Item 14 in place of Item 11, two of Item 15 in place of Item 12, and two of Items 3 and Items 4. The only difference between element assemblies for different voltage and kW ratings is the element itself (Item 1).

Items 8, 16 and 17 are shown as associated parts. They are not part of either assembly.

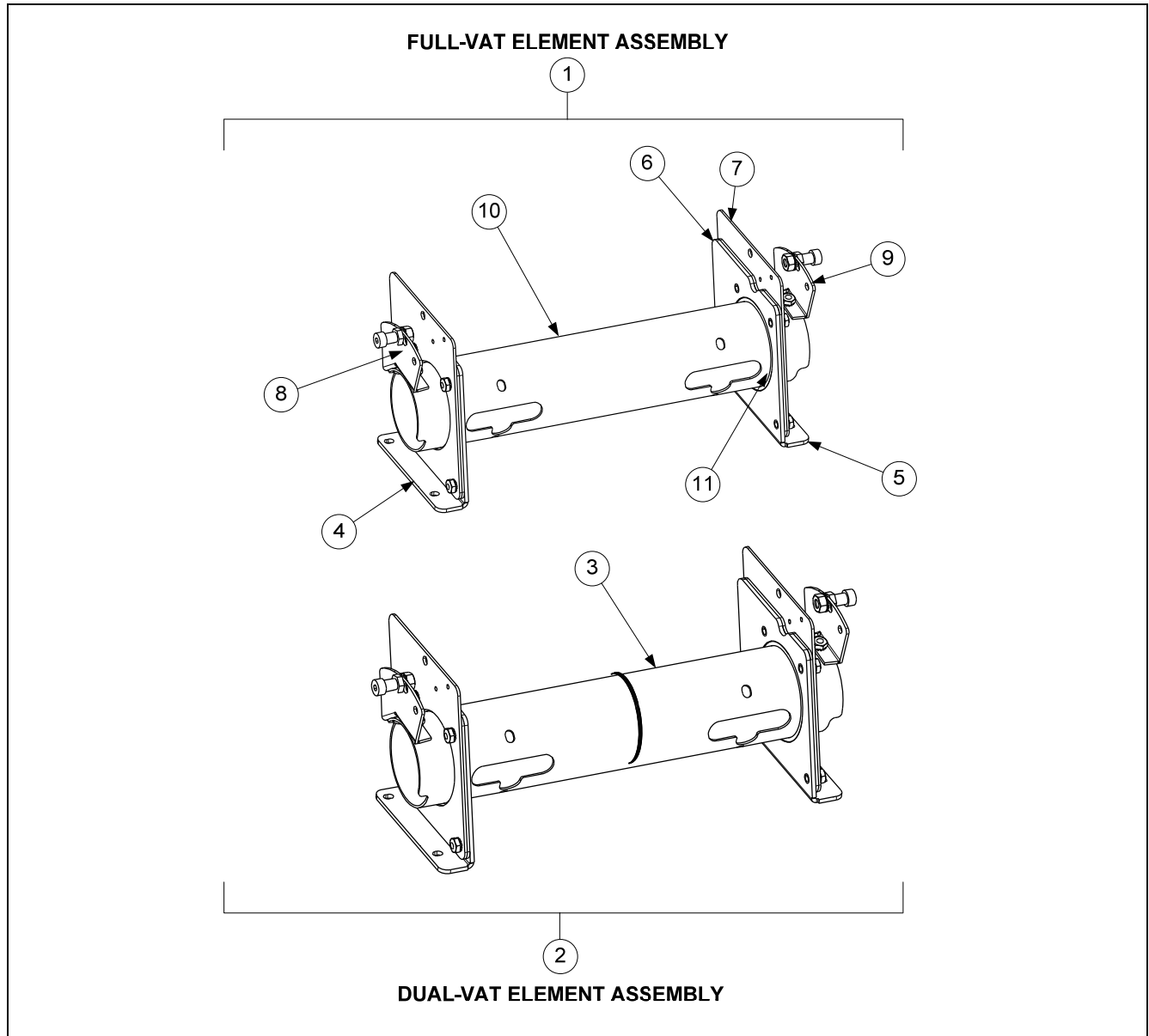
1.5.3.1 Element Assemblies and Hardware cont.

ITEM	PART #	COMPONENT
1		Element
	8262198	200V 7.0 kW (220V 8.5kW used in some export 3-phase 4-wire WYE units)
√	8262192	208V 7.0 kW
	8262200	220V 7.0 kW (240V 8.5kW used in some export 3-phase 4-wire WYE units)
	8262193	230V 7.0 kW
	8262199	230V 8.5 kW
	8262194	240V 7.0 kW
	8262196	480V 7.0 kW
√ 2	8263450	Kit, Touch Elec Temperature Probe- includes tie wraps and grommet.
3	8160681	Grommet, Probe
4	8160480	Plug, .375-inch Dome
5	8160688	Gasket, Element
6	8091003	Screw, 10-32 X 3/8-inch Hex Head SS
*	8090766	Nut, 10-32 Keps Hex Head SS
*	2304028	Wrench, Element Tube Nut Spanner
7	2303714	Bracket, Temperature Probe 7.0kW
	2300784	Bracket, Temperature Probe 8.5kW (used in some export 3-phase 4-wire WYE units)
8	2200464	Bracket, Lower Spring
9	9102042	Clamp, Element (Short)
10	2300781	Clamp, Element (Long)
11	2304902	Support, Full-Vat Element Rear
*	2308163	Backet, LOV Hybrid Element
12	2304101	Support, Full-Vat Element Front
13	8090567	Tie-Wrap, Metal
14	2304903	Support, Dual-Vat Element Bottom Rear (use 230-8163 for fish vat)
15	2304103	Support, Dual-Vat Element Bottom Front
16	8103030	Spring, Element Lift Left
	8103031	Spring, Element Lift Right
17	2200733	Bracket, Lower Spring Mating

* Not illustrated.

√ Recommended parts.

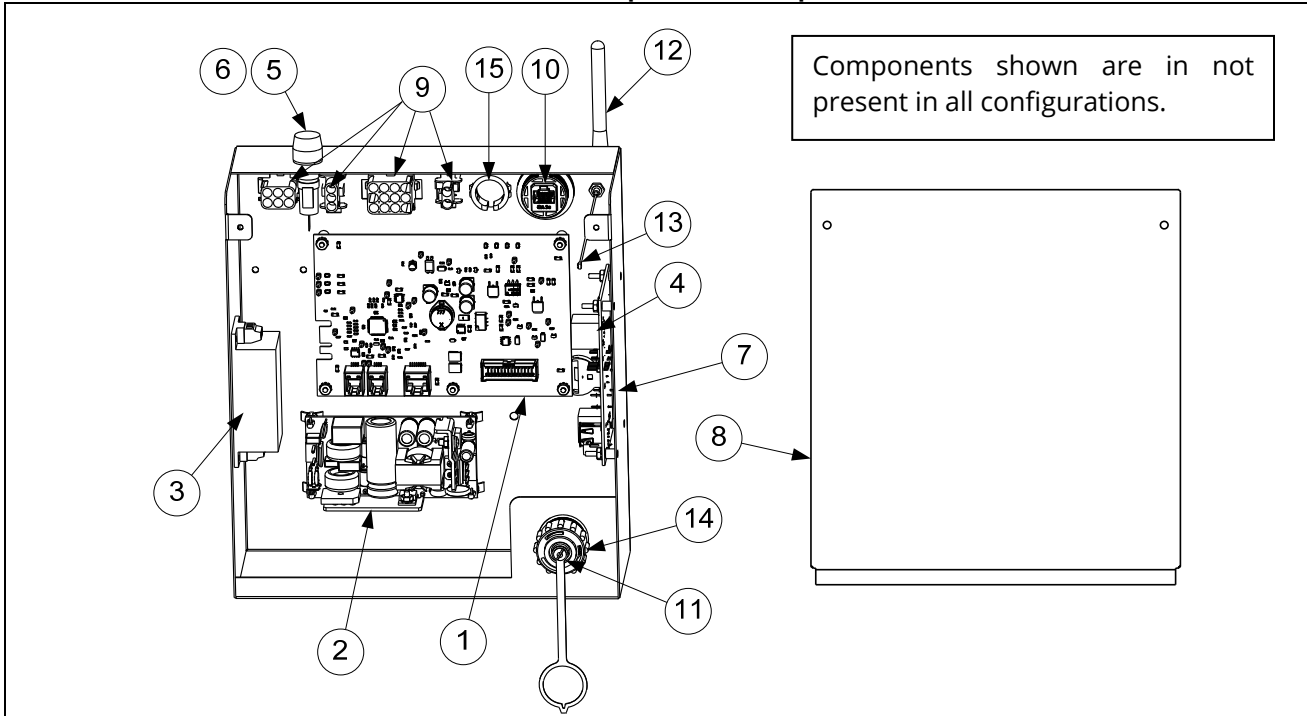
1.5.3.2 Element Tube Assemblies



ITEM	PART #	COMPONENT
1	1080297SP	Tube Assembly RE Element, Full-Vat
2	1080298SP	Tube Assembly RE Element, Dual-Vat
3	8103246	Bushing and Tube Assembly, Dual-Vat
4	1080315	Bracket Assembly, LH Element Tube Support
5	1080316	Bracket Assembly, RH Element Tube Support
6	2200122	Plate, Element Tube Support Inner
7	2200123	Plate, Element Tube Support Outer
8	1067651SP	Bracket Assembly, LH Upper Spring (<i>use 1066569SP for 17kW</i>)
9	1067652SP	Bracket Assembly, RH Upper Spring (<i>use 1066570SP for 17kW</i>)
10	8102992	Tube, Full Vat Element Mounting
11	8102993	Bushing, Tube End Teflon
*	8262598	Kit, Tilt Switch
*	8074742	Switch, Long Lever High Temp

* Not illustrated.

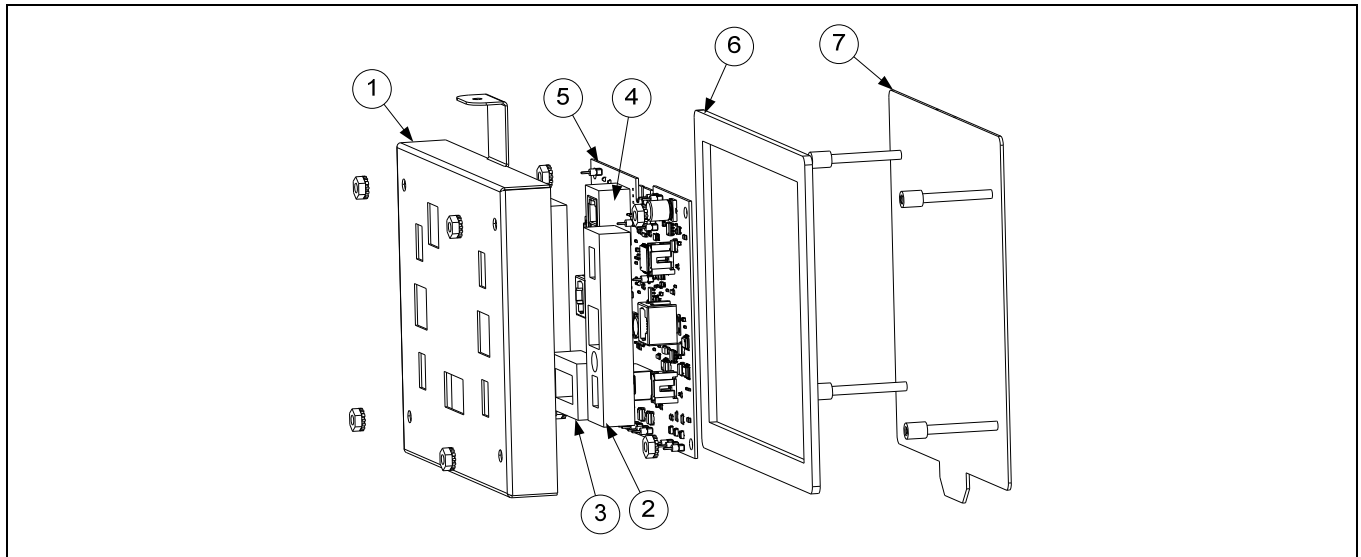
1.5.4 FIB (Filtration Interface Board) Filter and Top Off Box Components



ITEM	PART #	COMPONENT
	1088033SP	Box Assembly, ATO/FIB Filter with KCCM SUI (Use 1088032SP without optional SUI)
√ 1	1086575	Board, FIB w/ Software
√ 2	8263684	Power Supply, 24VDC 130W ATO, Actuators, Filter Pump, Top Off Pump
√ 3	8075974	Power Supply, 24VDC, 15W for KCCM SUI board (only used on early units)
*	1087247	Holder Assembly, Fuse with Leads (used with the KCCM SUI Board)
√ 4	8075982	PCB, Assy JLOV KCCM/SUI
√ 5	8075570	Fuse, 250VAC 3.5A Fast Acting
6	8071321	Holder, Fuse
7	1087746	Box, Assembly
8	2401727	Cover, ATO/Filter Box
9	8076240	Harness, Bulk Oil/ATO/FIB (J1 (30-pin) FIB to illustrated connectors inside FIB Box) (Prior to 06/2022)
	8076613	Harness, Bulk Oil/ATO/FIB (J1 (30-pin) FIB to illustrated connectors inside FIB Box) (After 06/2022)
10	8075967	Coupler, 8PBC to 8PBC
11	8075970	Cap, Dust
12	8075975	Antenna
13	8076225	Cable, U. FL to RP-SMA Bulkhead (attaches from item 12 to Item 4)
14	8075969	Cable, USB Receptacle Mount (USB end attaches to Item 4)
15	8071926	Bushing, .875 Split
*	8074056	Connector, 3-Wire Snap
*	WIR1179	Wire Assy, FQLAU Filter/ATO Power (Connects item 1 and item 2)
		See Wiring Diagrams See Wiring Diagrams in BIELA14-T Wiring Diagram Manual for cable locations
*	8075632	Terminator, CAN End Communication RJ11 (FIB J4)
*	8075977	Cable, RJ45 Cat5E 7.87" (From Item 10 to Item 4)
*	8076314	Harness, Filter/ATO Power/Control 24" (C5 (6-pin) Rear FIB Box - C5 (6-pin) Left Component Box)
*	8076242	Harness, KCCM SUI Communication/Power (RJ45 item #4 to J4 FIB and to item #3)
*	8076241	Harness, Power Supply (From item #2 to Snap Connectors)
*	8075551	Cable, C-Bus Right SIB (J7) to FIB (Filtration Interface Board) (J3)
*	8075810	Cable, FIB to VIB Actuator Power (used from FIB item #1 (J2) to VIB (J4) and from VIB (J3) to VIB (J4))

* Not illustrated √ Recommended parts.

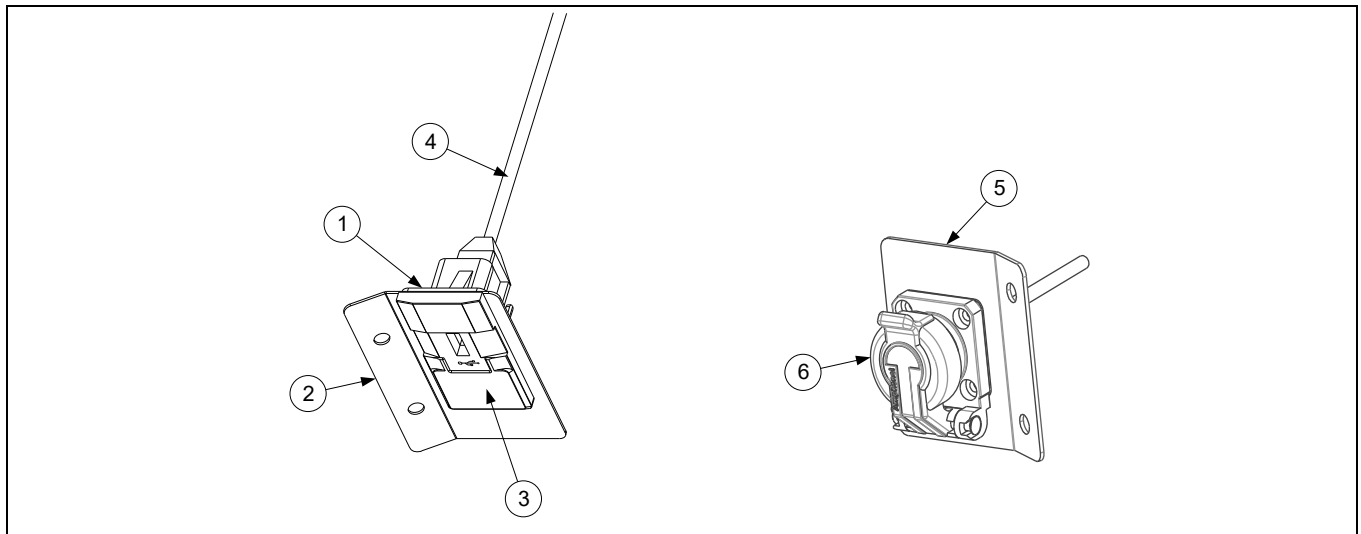
1.5.5 VIB (Valve Interface Board) Components



ITEM	PART #	COMPONENT
√	1085996SP	VIB Board Assembly
1	8242346	Cover, VIB Board Housing
2	8161015	Gasket, Actuator Power VIB
3	8161013	Gasket, 20 pin VIB Connector
4	8161014	Gasket, P-Bus VIB Connector
5	1086574SP	Board, VIB with SW
6	8160820	Seal, Linear Actuator Board
7	1080097	Box, Linear Actuator Stud

√ Recommended parts.

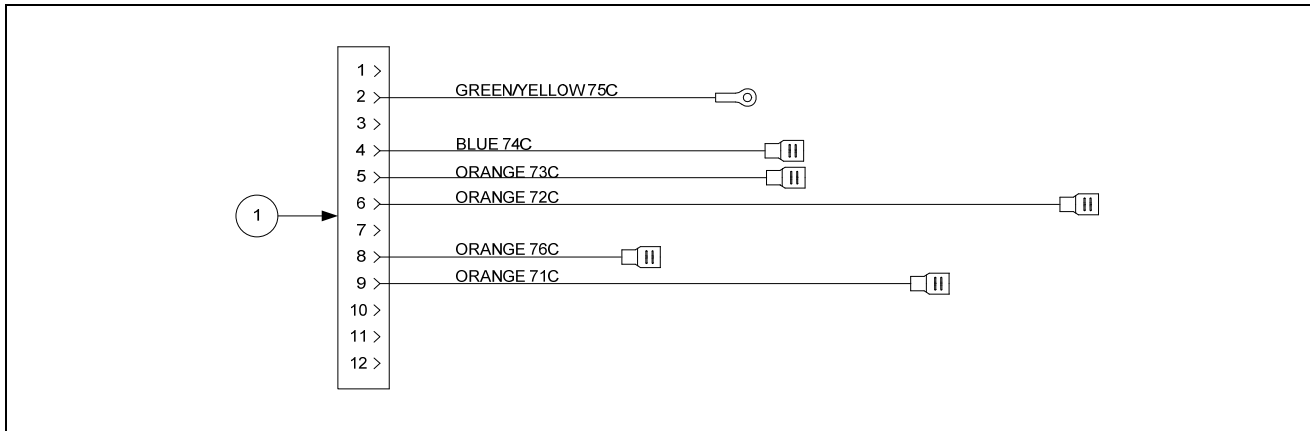
1.5.6 USB Connector



ITEM	PART #	COMPONENT
	1084737	Bracket Assy, USB Mounting Elec
1	2207520	Plate, Backing USB Bezel
2	2600193	Bracket, Elec USB with Spreader
3	8074989	Bezel, USB Port
4	8074990	Cable, USB
	130000191	Bracket Assy, USB Mounting Elec
5	130000190	Bracket, Elec USB Mounting
6	8105041	USB, Self-Closing Flange

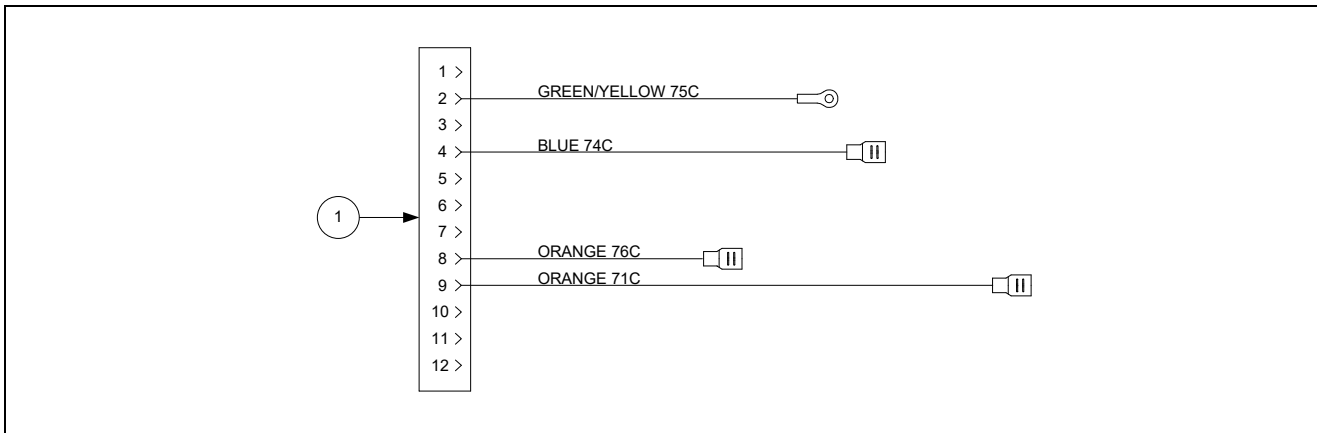
1.5.7 Wiring

1.5.7.1 Contactor Box Wiring Assemblies – 12-Pin Dual-Vat C-1



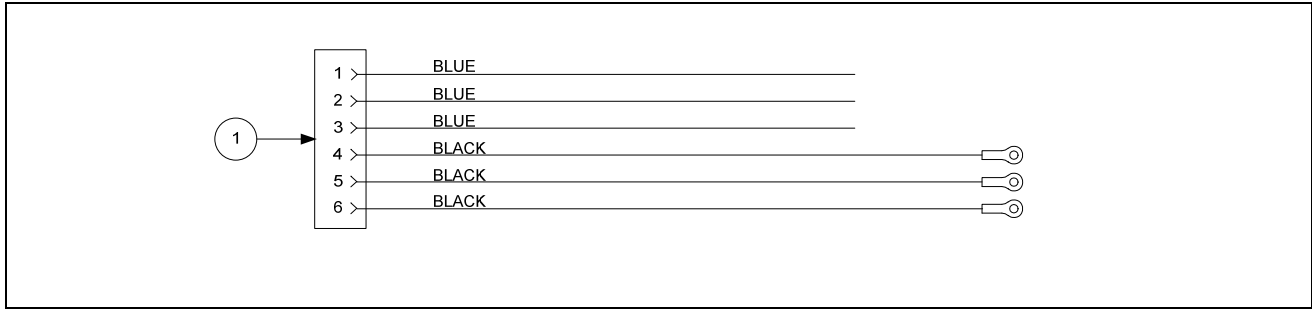
ITEM	PART #	COMPONENT
1	1087518SP	Contactor Box Harness Assembly Dual Vat

1.5.7.2 Contactor Box Wiring Assemblies – 12-Pin Full-Vat C-1



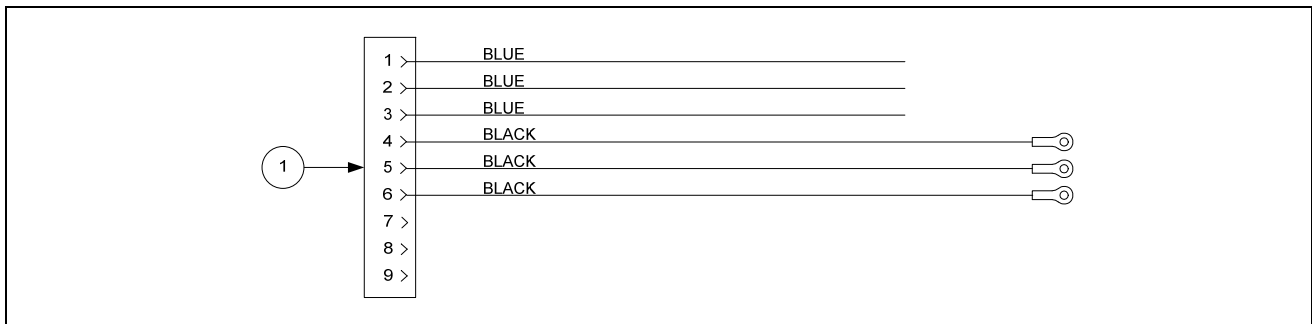
ITEM	PART #	COMPONENT
1	1087516SP	Contactor Box Harness Assembly Full Vat

1.5.7.3 Contactor Box Wiring Assembly - 6-Pin (Left Element)



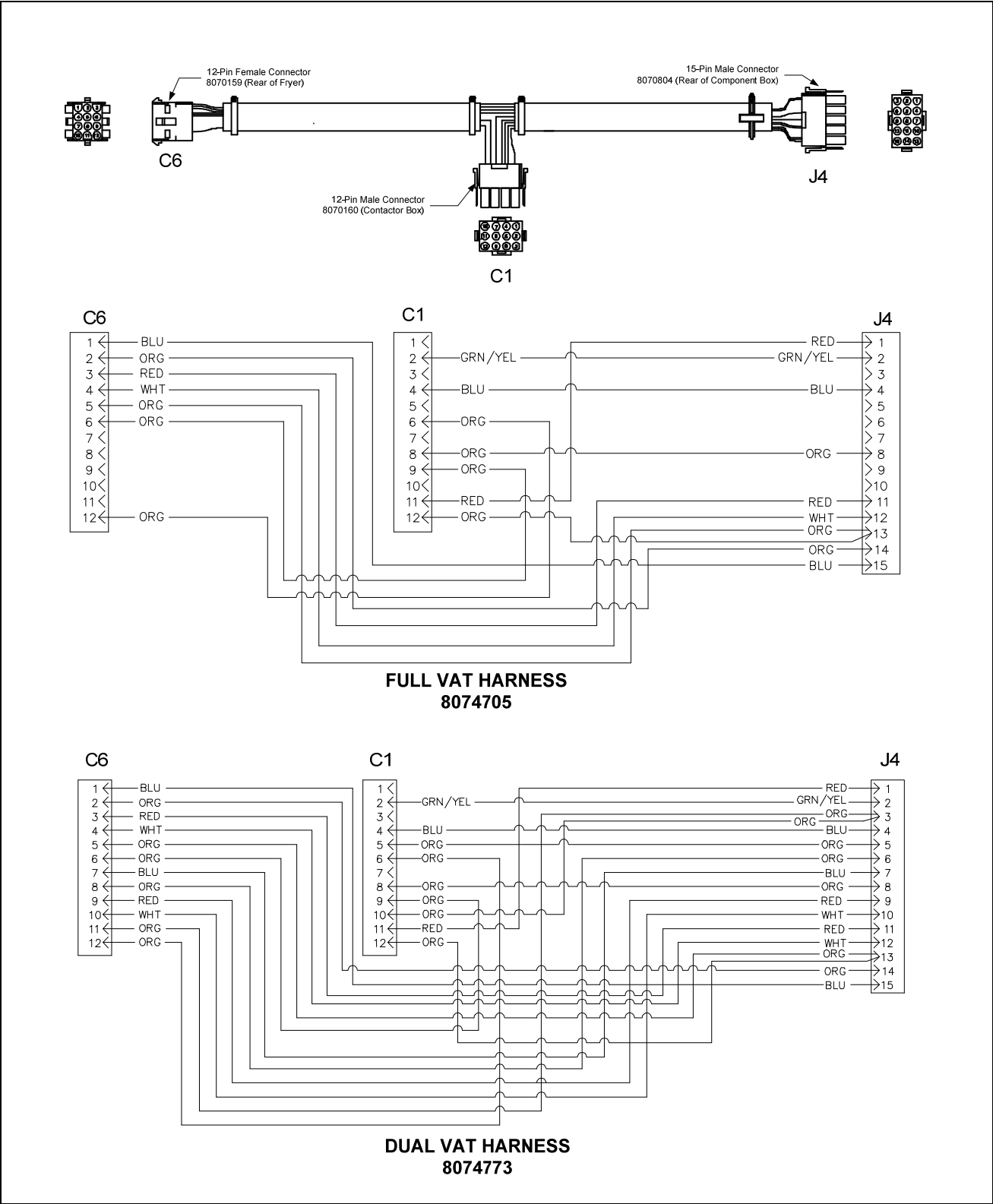
ITEM	PART #	COMPONENT
1	1068744SP	14/17 kW Mechanical Contactor

1.4.5.4 Contactor Box Wiring Assembly - 9-Pin (Right Element)



ITEM	PART #	COMPONENT
1	1068745SP	14/17 kW Mechanical Contactor

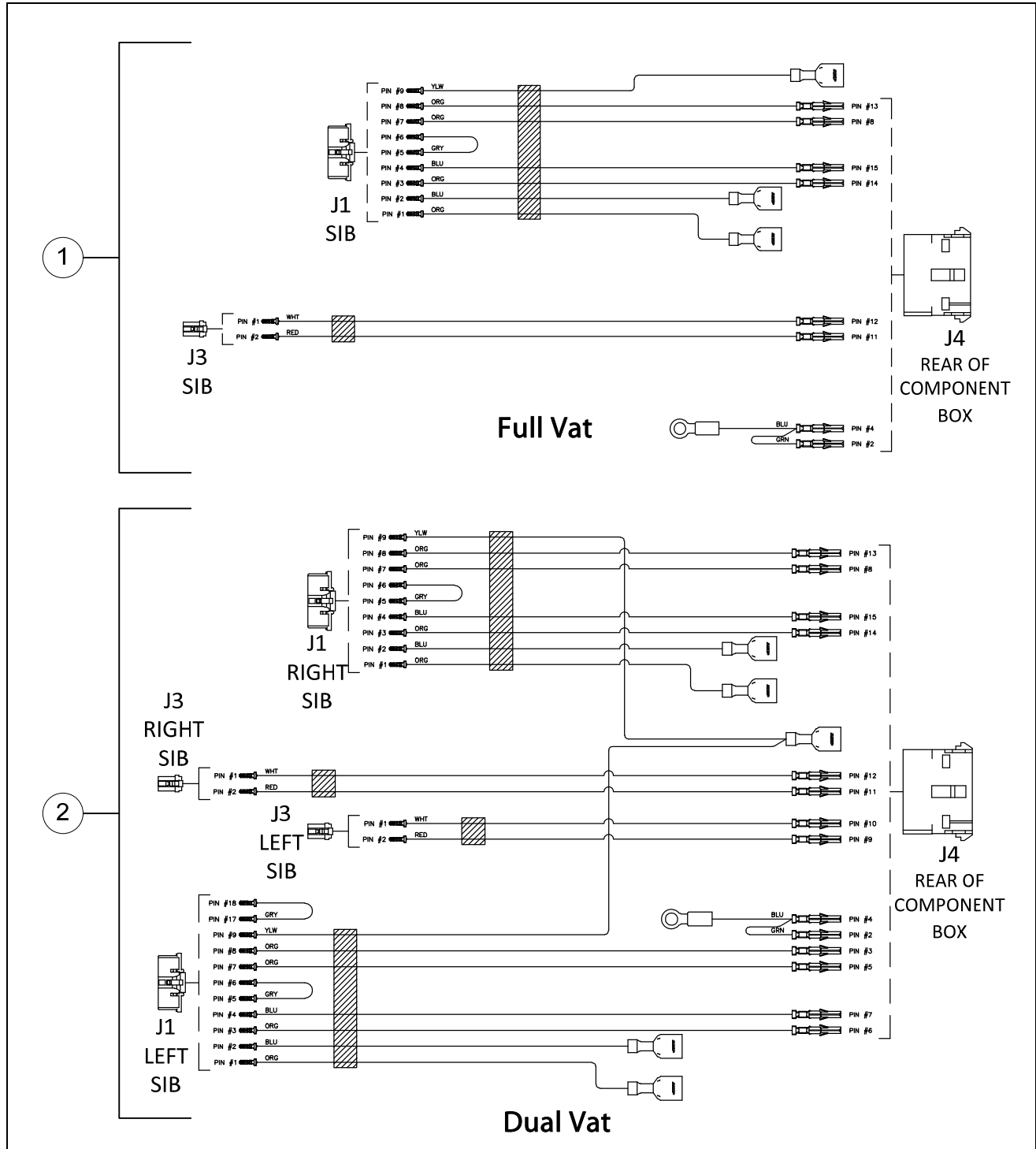
1.5.7.5 Main Wiring Harnesses



ITEM	PART #	COMPONENT
1	8074705	Full Vat Main Wiring Harness J4 to C1 and C6
2	8074773	Dual Vat Main Wiring Harness J4 to C1 and C6

See the BIELA14-T Wiring Diagrams Manual.

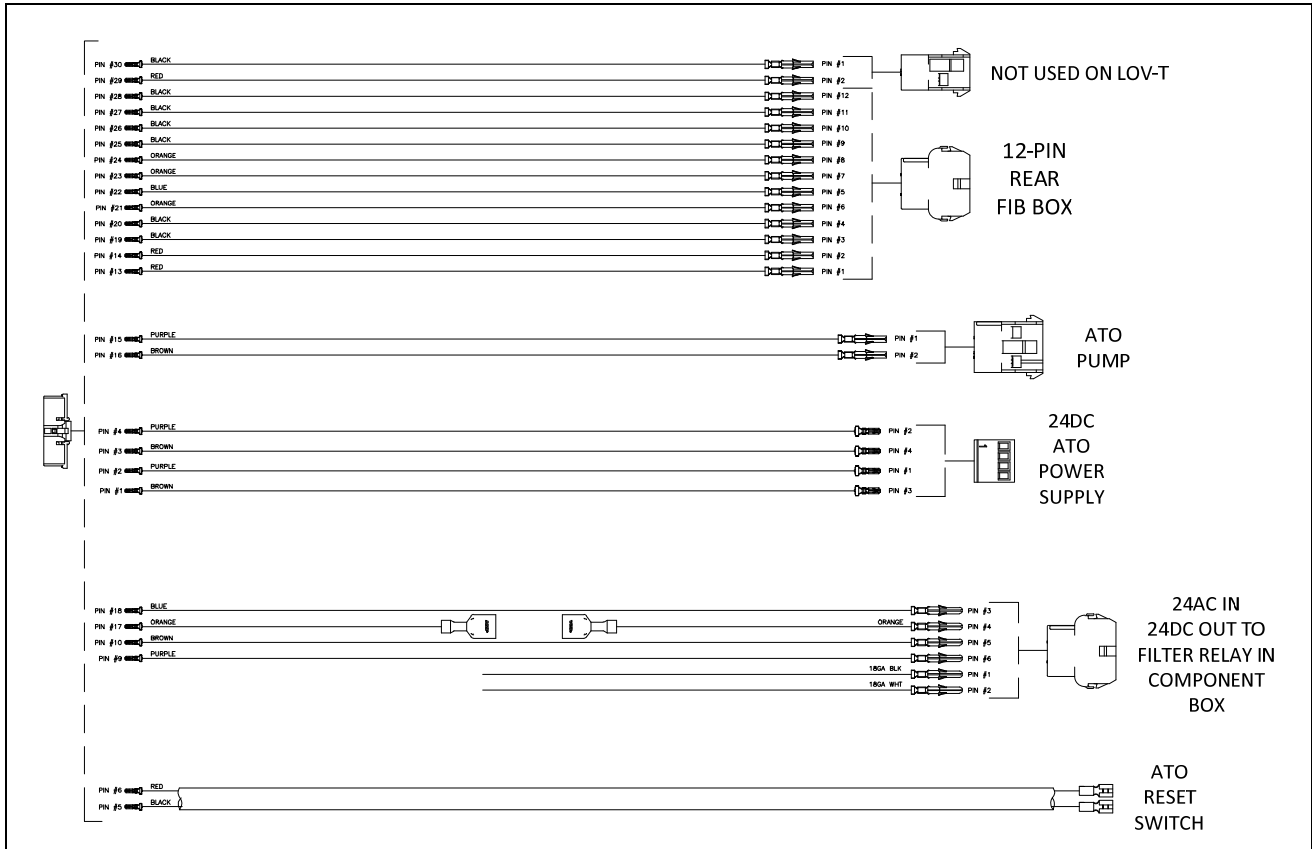
1.5.7.6 Component Box Wiring Harnesses



ITEM	PART #	COMPONENT
1	8075951	Full Vat Control Harness J4 to J1 and J3
2	8075952	Dual Vat Control Harness J4 to J1 and J3

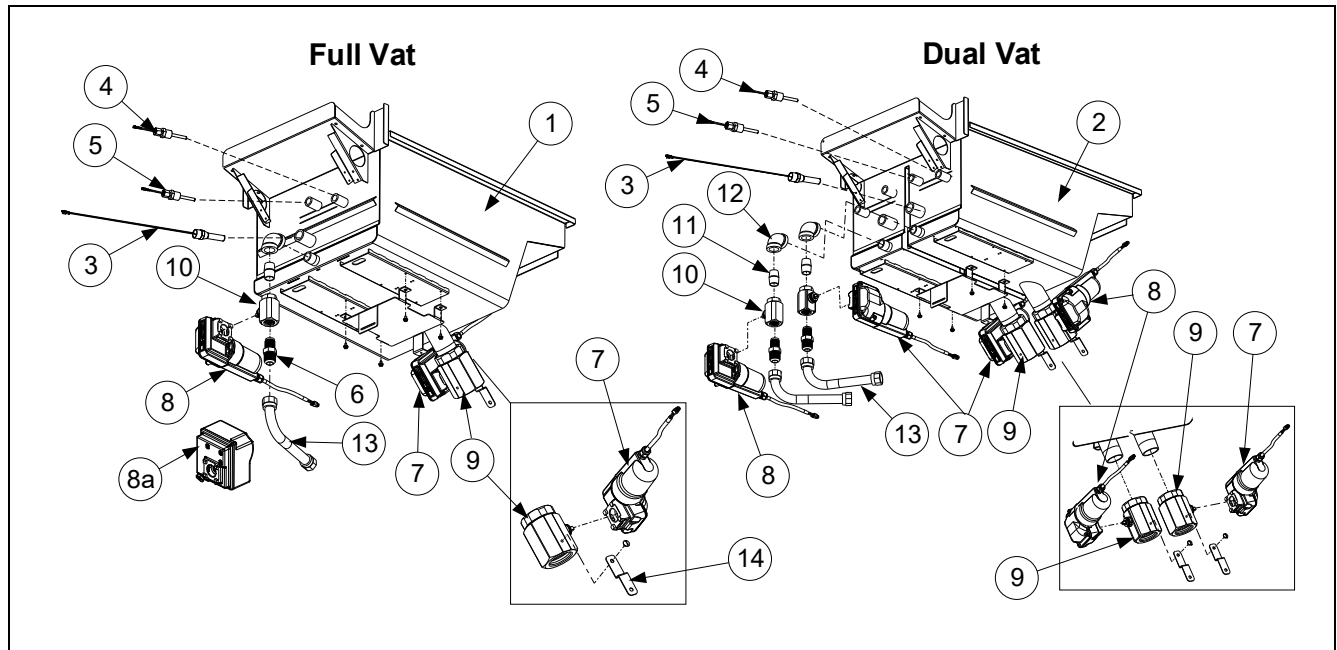
See the BIELA14-T Wiring Diagrams Manual.

1.5.7.7 FIB Box Wiring Harness



ITEM	PART #	COMPONENT
1	8076240	Harness, Bulk Oil, Topoff /FIB (<i>Prior to 06-2022</i>)
2	8076613	Harness, Bulk Oil, Topoff /FIB (<i>After 06/2022</i>)

1.6 Frypot Assemblies and Associated Parts

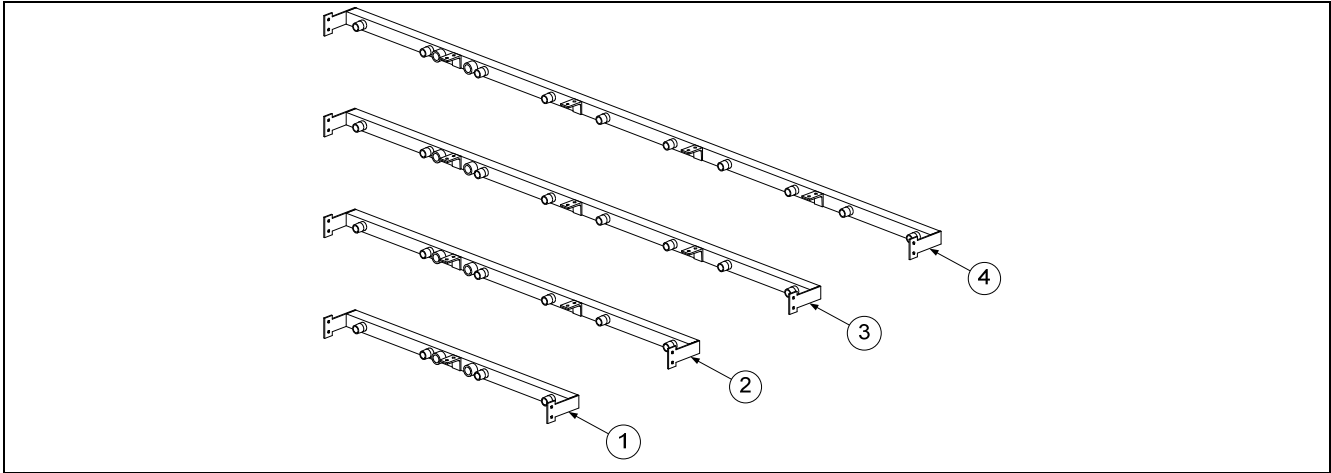


ITEM	PART #	COMPONENT
1	8238958	Frypot, Full-Vat
2	8238959	Frypot, Dual-Vat
√ 3		Thermostat Assembly, High-Limit Long Standard
	8262454	Non-CE Full Vat 425°F (218°C) (17kW FV and 14kW FV) (Color Coded Black 8067543)
	8262456	Non-CE Dual Vat 435°F (224°C) (22kW, 17kW DV and 14 kW DV) (Color Coded Red 8068035)
	8262455	CE Full and Dual Vat 415°F (213°C) (14kW and 17kW CE) (Color-Coded Yellow 8068132)
√ 4	8263287	Probe, VIB (Auto Filtration) RTD Kit
√ 5	8263544	Probe, ATO (Topoff) RTD Kit
6	8101668	Adaptor, Male 5/8" OD x 1/2"
√ 7	8075809	Actuator, Rotary 24VDC (BLUE)
√ 8	8075808	Actuator, Rotary 24VDC (BLACK)
√ 8a	130013720	Actuator, Rotary 24VDC (GRAY SQUARE)
√ 9	8104353	Valve, 1¼-inch NPT Rotary Actuator
√ 10	8103754	Valve, ½" NPT Return Rotary Actuator
11	8130022	Nipple, ½" x Close NPT BM
12	8130062	Elbow, ½-inch BM 90°
13	8101067	Flexline, 5/8" OD x 8.50" Long
14	2207386	Support, Drain
*	8161118	Insulation, Superwool EL30

Always replace with the same type/color of actuator that was removed.

√ Recommended parts.

1.7 Oil Return Manifolds

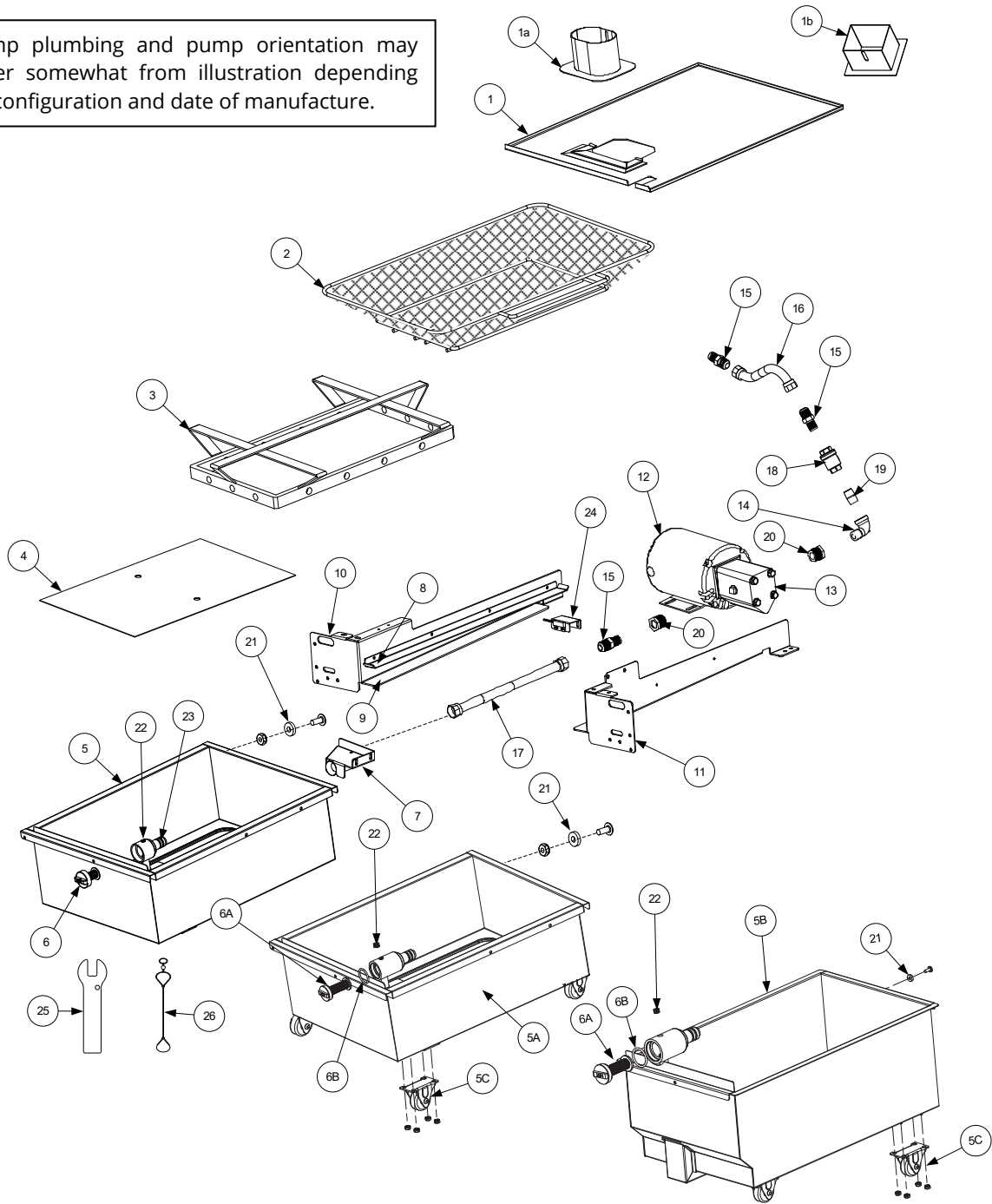


ITEM	PART #	COMPONENT
1	8103015	Manifold, Two-Station Fryer
2	8103016	Manifold, Three-Station Fryer
3	8103017	Manifold, Four-Station Fryer
4	8103018	Manifold, Five-Station Fryer
*	8130907	Cap, 15/16-inch Valve

* Not illustrated.

1.8 Filtration System Components

Pump plumbing and pump orientation may differ somewhat from illustration depending on configuration and date of manufacture.



ITEM	PART #	COMPONENT
1	8237744	Lid, Standard Size Filter Pan (<i>3/4/5 Vat Fryers</i>)
	8238810	Lid, Half Size Filter Pan (<i>2-Vat Fryer</i>) (<i>prior to 11/2022</i>)
1A	8237685	Guard, Pan Splash Lid <i>Oval</i> (<i>3/4/5 Vat Fryers</i>)
	8237915	Guard, Pan Splash Lid <i>Oval</i> (<i>2-Vat Fryer</i>)
1B	130033732	Guard, Pan Splash Lid <i>Square</i>
2	8103276	Crumb Tray, Standard Size Filter Pan (<i>3/4/5 Vat Fryers</i>)
	8103288	Crumb Tray, Two-Vat Fryer, Half Size Filter Pan (<i>2-Vat Fryer</i>)
3	8103268	Hold-Down Ring 16.56" x 22.32", Standard Size Pan (<i>3/4/5 Vat Fryers</i>)
	8103289	Hold-Down Ring 11.20" x 19.10", Half Size Filter Pan (<i>2-Vat Fryer</i>)

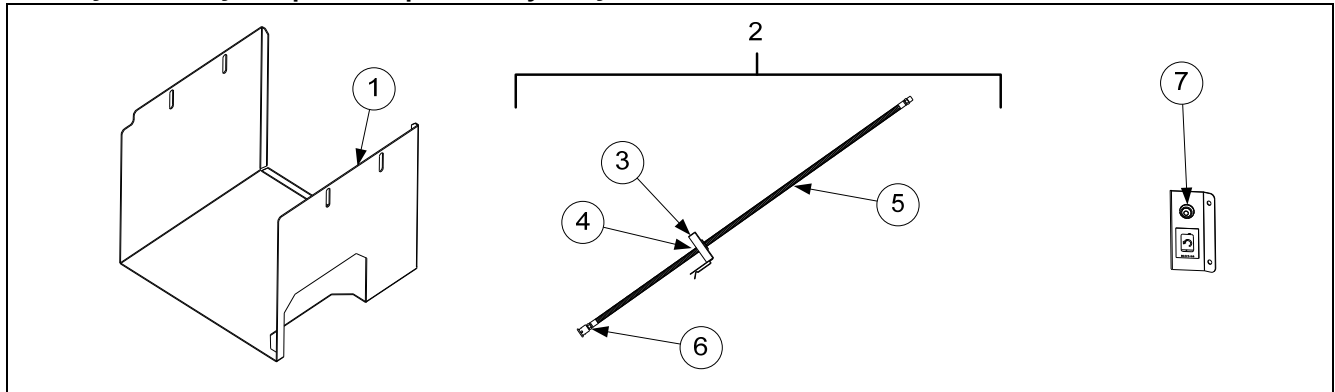
ITEM	PART #	COMPONENT
4	8122025	SanaGrid Filter Screen
5	1088031SP	Pan, Assy, Filter LOV-T™ Standard Size w/ Short Pre-Filter (3, 4, and 5 Vat Fryers) without casters prior to 11/2022
	1088465SP	Pan, Assy, Filter LOV-T Standard Size w/ Short Pre-Filter (3, 4, and 5 Vat Fryers) with casters prior to 11/2022
	1087700SP	Pan, Assy, Filter Half Size w/ Short Pre-Filter (2-Vat Fryer) (with casters prior to 03/2019)
	1088399SP	Pan, Assy, Filter Half Size w/ Short Pre-Filter (2-Vat Fryer) (with casters 04/2019 to 10/2022)
5A	130001324SP	Pan, Assy, Filter LOV-T™ Standard Size w/ Long Pre-Filter (3, 4, & 5 Vat Fryers) with casters 03/2024 to current (replaced 130000524 without casters 11/2022-03/2024)
5B	130001321SP	Pan, Assy, Filter Half Size w/ Long Pre-Filter (2-Vat Fryer) with casters 03/2024 to current (replaced 130000517 without casters 11/2022-03/2024)
5C	8104137	Caster, 2-inch Low Profile Rigid (attached w/ 4 - 8090256 Nut KEPS 10-32 hex)
6	8238335	Screen, Suction Line Filter (Short)
6A	8239651	Screen, Suction Line Filter (Long)
6B	8161213	O-Ring, Inline Filter Cap (for use with 8239651)
7	8239501	Suction Tube Standard LOV™ (3/4/5 Vat Fryers) (prior to 11/2022)
	130000513	Suction Tube Standard LOV™ (3/4/5 Vat Fryers) (after 10/2022) may differ slightly in appearance
	8239429	Suction Tube Two Vat LOV™ (2-Vat Fryer) (prior to 11/2022)
	130000512	Suction Tube Two Vat LOV™ (2-Vat Fryer) (after 10/2022) may differ slightly in appearance
8	2203879	Rail, Filter Pan Upper (3/4/5 Vat Fryers)
	2306616	Rail, GL230 LH/RH Upper Pan (2-Vat Fryer)
9	2306619	Rail, GL230 LH/RH Lower Pan (2-Vat Fryer)
10	2203748	Support, Left Filter Pan (3/4/5 Vat Fryers)
	2203275	Support, Left Filter Pan (2-Vat Fryer)
11	2203749	Support, Right Filter Pan (3/4/5 Vat Fryers)
	1068487	Support, Right Filter Pan (2-Vat Fryer)
12		Motor and Gasket Kit
	8261785	100V 50/60 Hz
√	8261712	115V 50/60 Hz
√	8261756	208V 50/60 Hz
	8261270	220-240V 50/60 Hz
	8261755	250V 50/60 Hz
√ 13	8263192	Pump, Filter Viking 8 GPM Kit (includes gasket 8160093, 5" screws 8091020 & washers 8090194)
*	8263191	Pump & Gasket Kit, 4 GPM (Japan) (includes gasket & 3" screws 8091250)
*	8091250	Cap Screw, 5/16-inch-18 3.00" NC Hex (Connects 8 GPM pump to motor)
*	8091020	Cap Screw, 5/16-inch-18 5.00" NC Hex (Connects 8 GPM pump to motor) (use 8090194 washers)
14	8130165	Elbow, ST ½-inch x ½-inch NPT 90° BM
15	8101668	Adapter, ⅝-inch to ½-inch NPT Male
16	8101067	Flexline, 8.5-inch Oil Return (to oil manifold)
17	8101057	Flexline, 13-inch Oil Return (from filter pan)
18	8104878	Check Valve 1 PSI ½" NPT
19	8130022	Nipple, ½-inch x Close NPT BM
20	8130031	Bushing, ¾" NPT x ½" BM
21	8103007	Magnet, Pull Ring
	8130989	Plug, ⅝-inch NPT Socket Head (used with Item 5, 5A, 5B)
√ 23	8263288	O-Ring (8161041) (Qty. of 6; used w/ Item 5, 5A, 5B)
24	1069251SP	Assembly, Filter Pan Switch (1065876SP Sensor only) (3/4/5 Vat Fryers)
	1068080SP	Assembly, Filter Pan Switch (1065876SP Sensor only) (2-Vat Fryer)
*	1065876SP	Sensor, Magnet
25	2401086	Wrench, Pre-Filter Cap
26	8104167	Lanyard, Filter Screen Wrench
*	8071105	Heater Strip Assembly, 100-120V 25W 18"
*	8071098	Heater Strip Assembly, 208-250V 25W 18"
*	1082813SP	Oil Disposal Connection (France Only)

* Not illustrated.

√ Recommended parts.

1.9 ATO (Auto Top-Off) Components

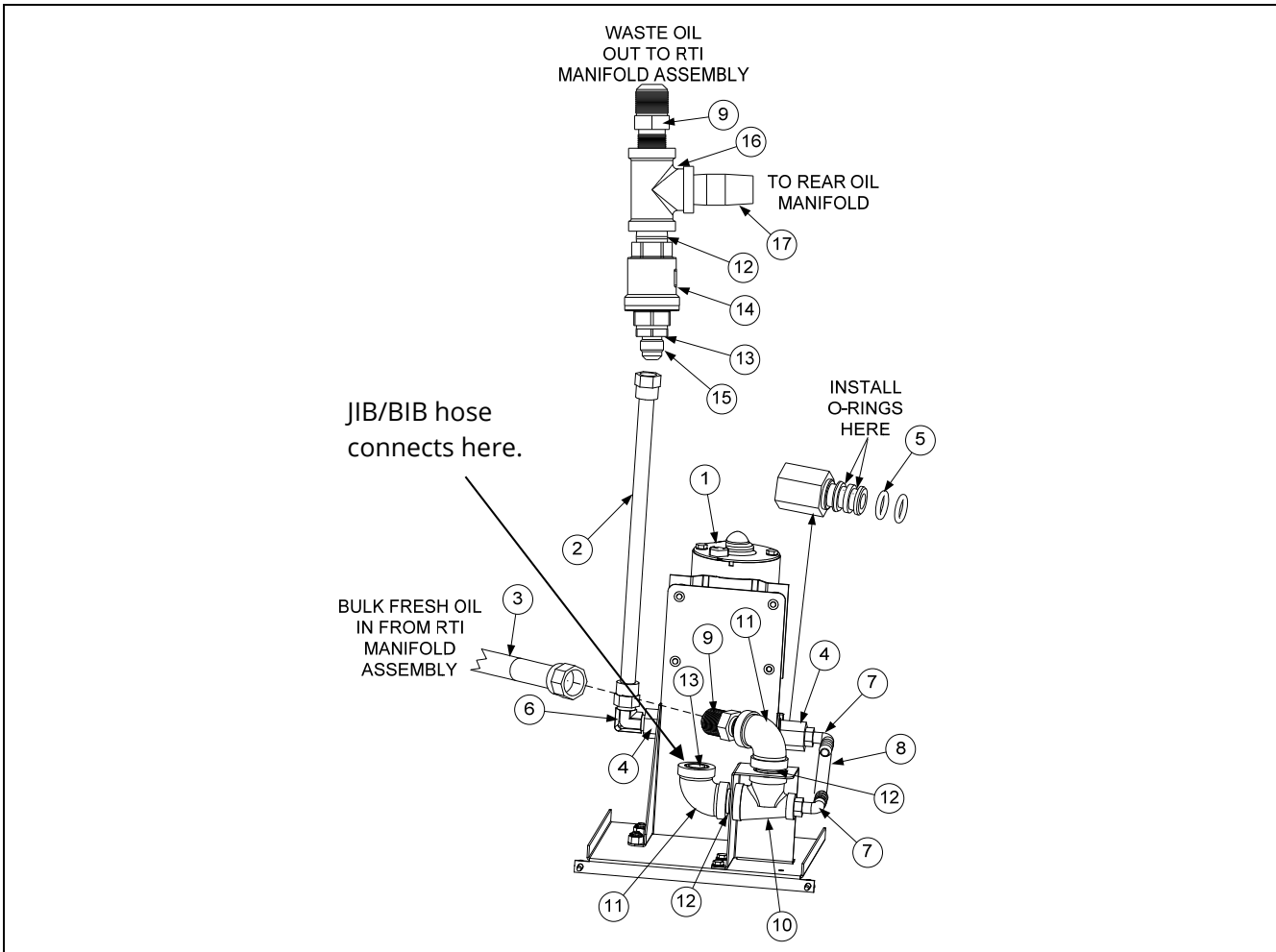
1.9.1 JIB Cradle, JIB Cap / Pick-Up Assembly and JIB (ATO) Reset Switch



ITEM	PART #	COMPONENT
1	2208363	Cradle, JIB
2	1081049SP	Cap, JIB Assembly (<i>use 1069495SP for BIB [Europe] (use 1086927 Europe) (use 1087216SP Middle East, France)</i>)
3	8237575	Cap, JIB (<i>use 8236812 for BIB [Europe] (use 8239175 [Europe]) (use 8104715 Cap Middle East)</i>)
4	8103664	Bushing, Heyco
5	8103663	Hose, JIB
6	8103300	Tip Assembly, JIB Suction Hose
√ 7	8074678	Switch, Momentary JIB Reset

√ Recommended parts.

1.9.2 ATO Pump Assembly

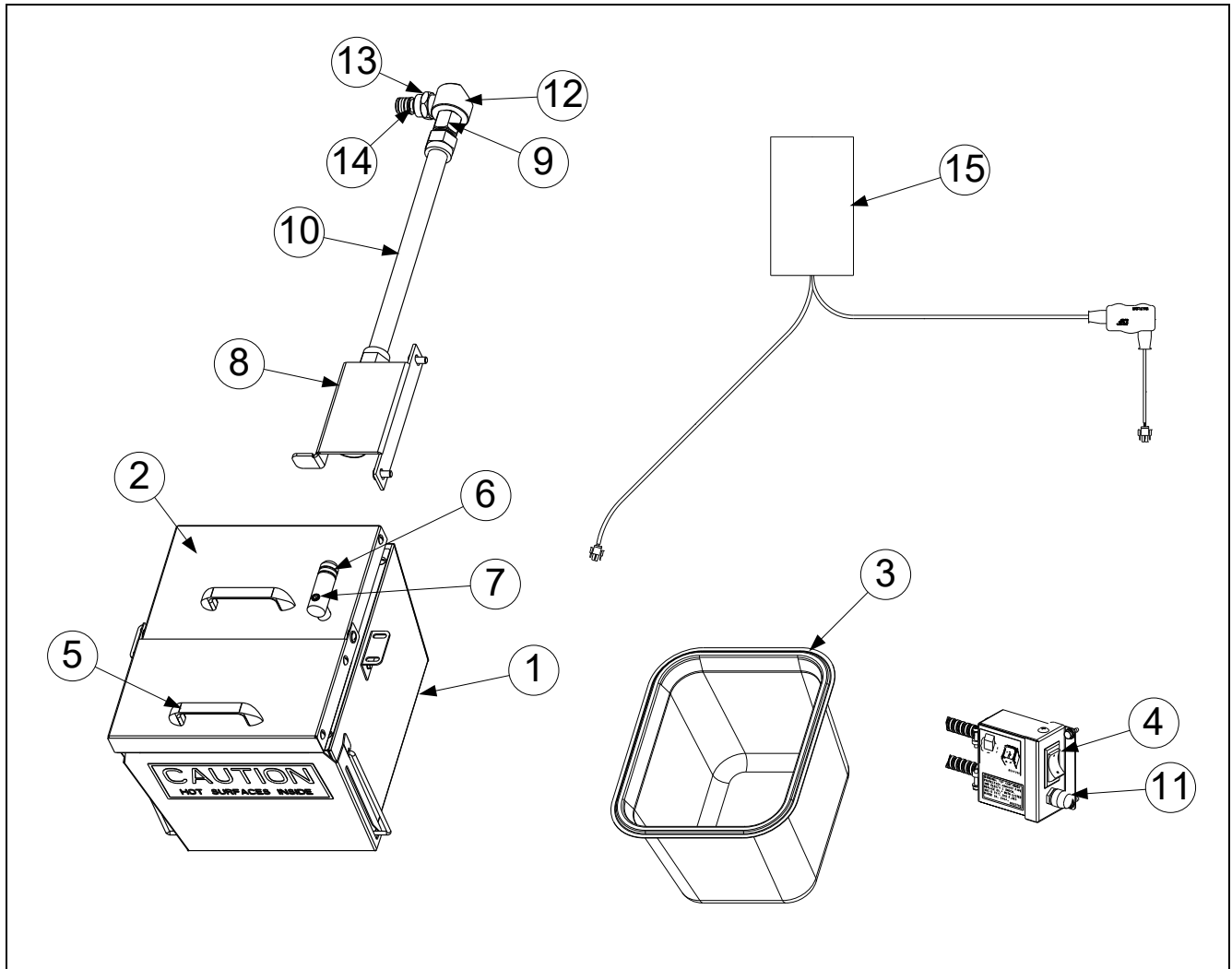


ITEM	PART #	COMPONENT
√ 1	1084372	Pump, Shurflo 24VAC
	1085673	Pump, Shurflo 24VAC (CE)
2	8103265	Flexline, ½" OD x 24" (3/8" Flare) (3/4/5 Vat Fryers) (Out to oil return manifold)
	8103591	Flexline, ½" OD x 8-inch (2-Vat Fryer) (Out to oil return manifold)
3	8101069	Flexline, ⅝" OD x 29.5-inch (In from RTI fresh oil solenoid)
4	8103578	Fitting, Shurflo Pump
5	8160782	O-Ring, Viton #111
6	8130940	Elbow, ¼" NPT x ⅜" Flare
7	8160710	Fitting, ¼" NPT x ½" Barb
8	8111166	Hose, Silicone Braided 5" (sold by the foot) (Cut and attach to item 7 with a ty wrap)
9	8101668	Adaptor, Male ⅝" OD x ½"
10	8237411	Bracket, JIB Elbow Elec LOV with Reducing Tee
11	8130062	Elbow, ½" BLK 90° NPT BM
12	8130022	Nipple, ½" x Close NPY BM
13	8130304	Bushing, ½" x ¼" Flush
14	8104878	Check valve, ½" NPT 1psi
15	8103270	Fitting, ⅜" Flare x ¼" NPT
16	8130003	Tee, ½" x ½" x ½" BM
17	8130298	Nipple, ½" x 2" NPT BM

* Not illustrated.

√ Recommended parts.

1.10 Shortening Melting Unit

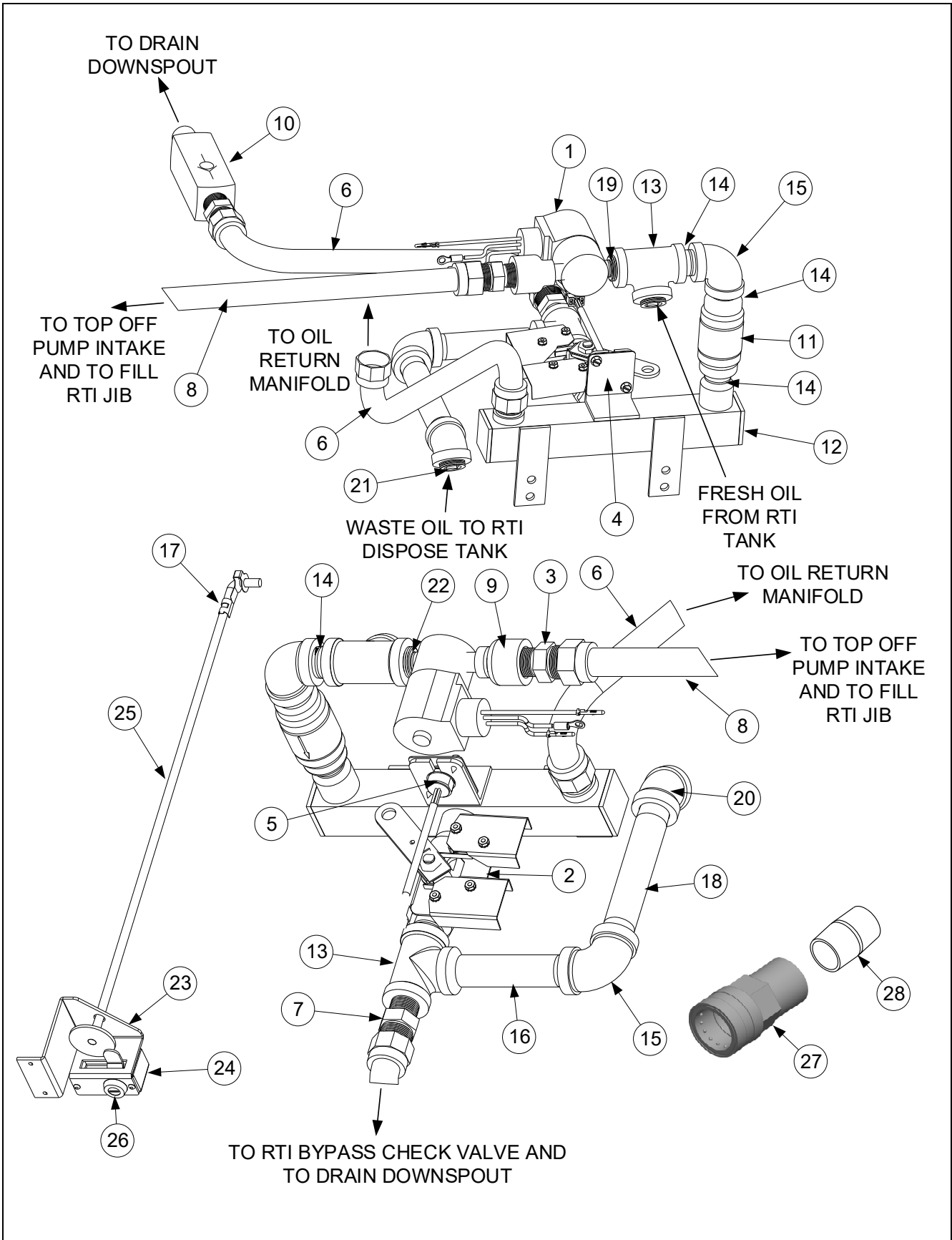


ITEM	PART #	COMPONENT
	1083754SP	Assembly, Heated Shortening
1	1083753	Box Assembly, Heated Shortening
2	1083744	Assembly, Heated Shortening Lid
3	8103957	Pan, Heated Shortening
4	8074036	Switch
5	8100180	Handle
√ 6	8261392	O-Ring (Pkg. of 5)
7	8130568	Plug, 1/8-inch Socket Head Pipe
8	8238319	Bracket W/A, Shortening Suction
9	8101669	Adaptor, Female 7/8" OD x 1/2"
10	8101055	Flexline, 3/8" OD x 11.5-inch
11	8071321	Holder, Fuse
√ *	8071555	Fuse 5 Amp
12	8130908	Adapter, 1/2" NPT 90°
13	8103820	Fitting, Quick Connect Shurflo Pump
√ 14	8160782	O-Ring, Viton #111
15	8075268	Strips, Hot Box Heater with controller
*	8071098	Heater Strip Assembly, 240V, 25W 18"
*	8071419	Heater Strip Assembly, 240V, 45W 36"
*	8071473	Heater Strip Assembly, 240V, 70W 56"

* Not illustrated.

√ Recommended parts.

1.11 Bulk Dispose and Fresh Oil
1.11.1 Bulk Dispose and Fresh Oil Manifold and Accessories

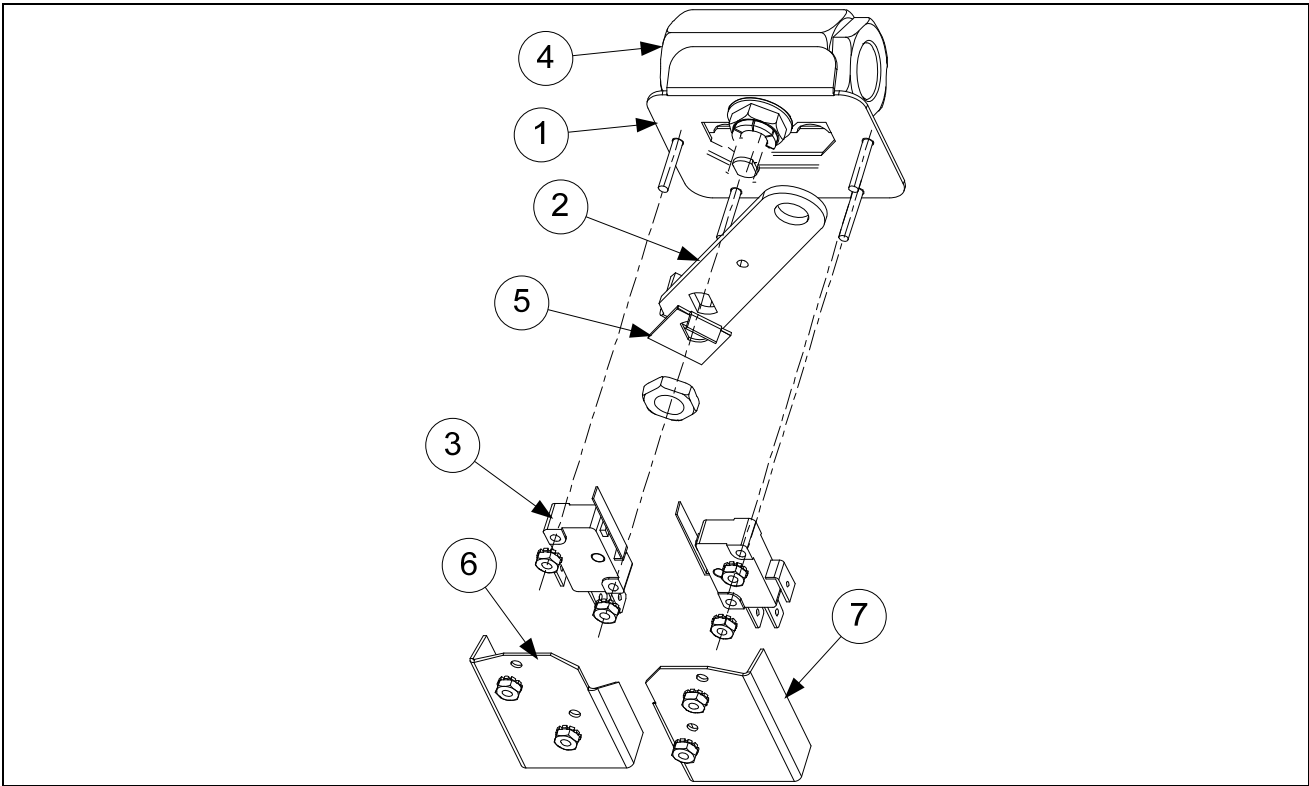


1.11.1 Bulk Dispose and Fresh Oil Manifold and Accessories cont.

ITEM	PART #	COMPONENT
√ 1	1066830SP	Solenoid Assembly
2	1080446SP	Valve, RTI Waste Assembly (see next page for parts)
3	8101668	Adaptor, Male 5/8" OD x 1/2"
4	2205658	Cover, RTI Dust Plug
5	8075812	Harness, Dispose/Pan SW/RTI
6	8101057	Flexline, 5/8" OD x 13-inch long
7	8101668	Adaptor, Male 5/8" OD x 1/2"
8	8101069	Flexline, 5/8" OD x 29.50-inch long (use item #6 for 2 vat units)
9	8130555	Reducer, Bell Fitting, 1/2" to 1/4" NPT BM
10	8103531	Valve, Check 20 PSI RTI bypass
11	8104879	Valve, Check 1/2" NPT 4 PSI RTI Manifold
12	8104880	Manifold, RTI
13	8130003	Tee, 1/2" x 1/2" x 1/2" BM
14	8130022	Nipple, 1/2" x Close NPY BM
15	8130062	Elbow, 1/2" Blk 90°
16	8130093	Nipple, 1/2" x 4-inch
17	8090601	Clip, Clevis Left Rod End
18	8130281	Nipple, 1/2" x 5-inch NPT
19	8130304	Bushing, 1/2" x 1/4"
20	8130345	Elbow, 1/2 Blk 45°
21	8130463	Plug, Pipe 1/2" NPT
22	8130838	Nipple, 1/4" NPT
	1080466SP	Handle and Lock Assy, Elec LOV™ RTI
23	2401651	Mount, RTI Handle LOV Electric
24	2208664	Cover, Handle Lock
25	8237142	Handle, RTI Waste Pull
26	8103587	Lock and Key, RTI Waste Handle
27	8103916	Coupling, 1" Quick Disconnect (Front Dispose) (France)
28	8130337	Nipple, 1" X 2-Inch

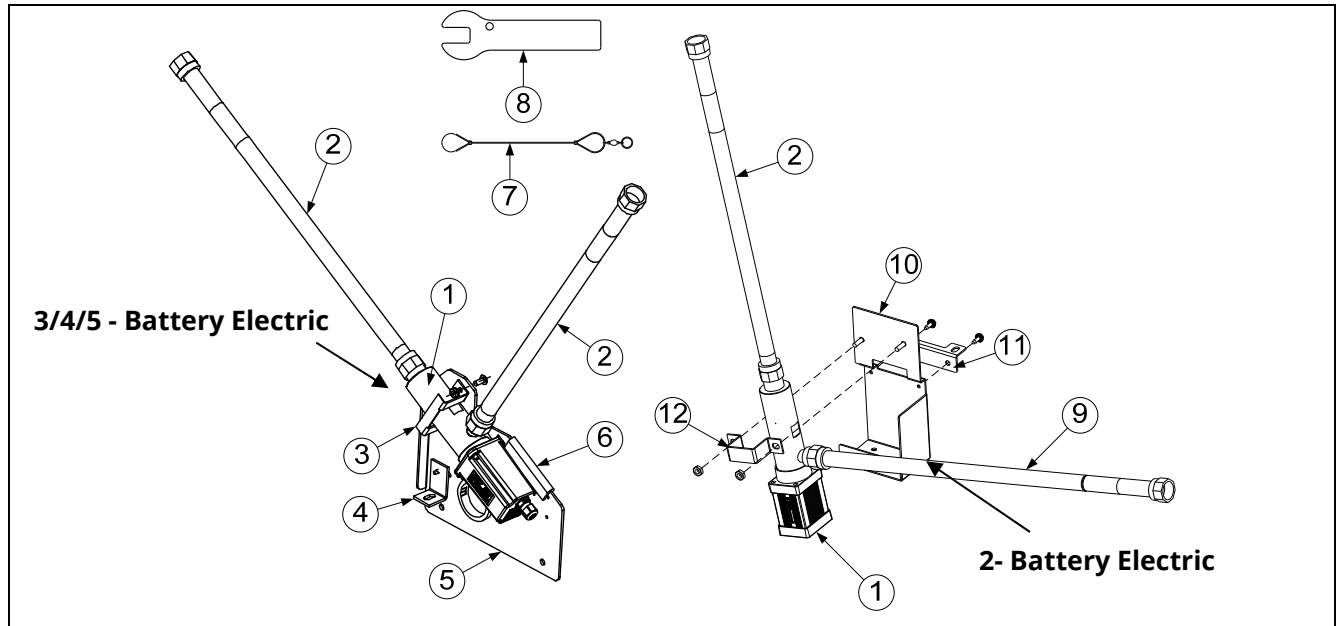
√ Recommended parts.

1.11.2 Bulk Dispose Waste Valve



ITEM	PART #	COMPONENT
	1080446SP	Valve, RTI Dispose Waste
1	1080445	Bracket, RTI Waste Valve
2	2205615	Handle, RTI Waste Valve
3	8074936	Microswitch, Gold Sealed
4	8100278	Valve, 1/2" Ball
5	9002935	Retainer, Nut Return Valve
6	9012348	Cover, DV Safety Switch
7	9022348	Cover, DV Safety Switch

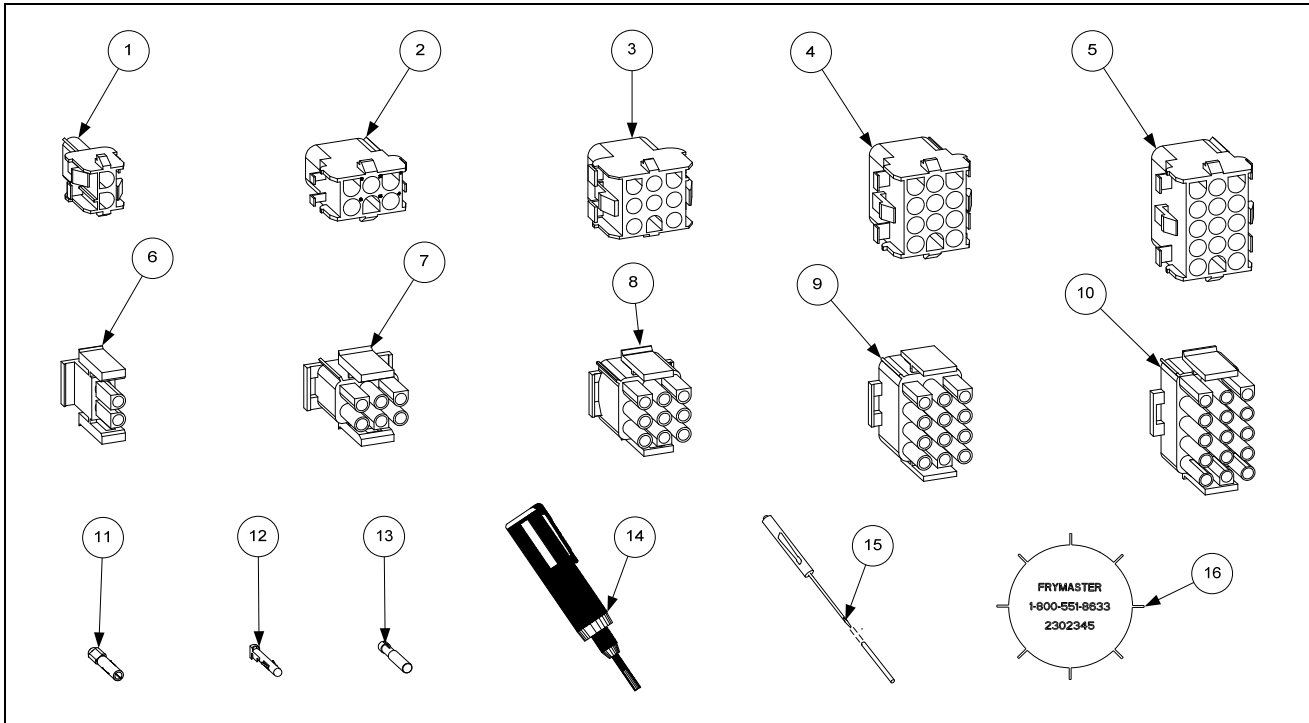
1.12 Oil Quality Sensor (OQS) and Associated Parts



ITEM	PART #	COMPONENT
	8263588	Kit, OQS FilterQuick Elec 2-Battery (Kit to add to existing LOV-T Electric Fryers)
	8263565	Kit, OQS FilterQuick Elec 3/4/5 Battery (Kit to add to existing LOV-T Electric Fryers)
1	8263292	Sensor, FilterQuick OQS Replacement
2	8101369	Flexline, 5/8" OD x 17.50-inch
3	2401385	Retainer, OQS Sensor FQ
4	2401386	Brace, OQS Sensor Mount
5	2401438	Mount, OQS Sensor FQ
6	8122524	Insulation
7	8104167	Lanyard, In-Line Filter
8	2401086	Wrench, Pre-Filter Cap
9	8101400	Flexline, 5/8" OD x 21-inch
10	1086101	Bracket Assy, EBRO Sensor
11	2401035	Support, EBRO Sensor Bracket
12	2400924	Strap, Bracket EBRO Sensor
*	8238990	Wrench, 1-1/16" (27mm)
*	8238991	Wrench, 1-1/16" (27mm) crows foot

* Not illustrated.

1.13 Wiring Connectors, Pin Terminals and Power Cords



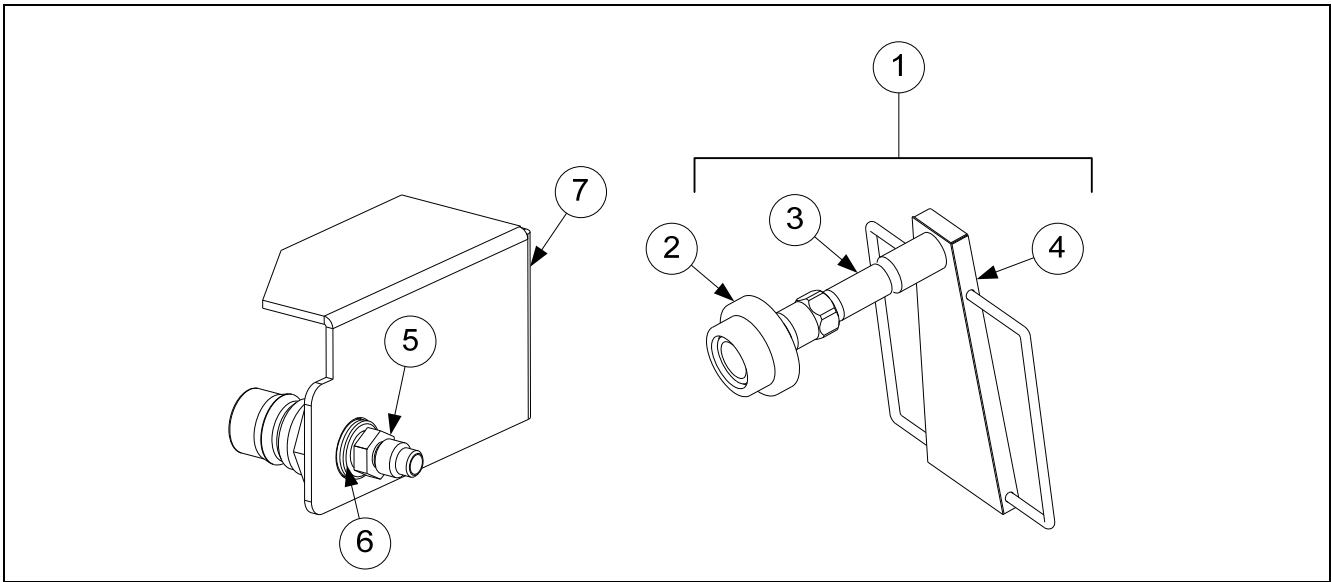
ITEM	PART #	COMPONENT
Power Cords		
*	8070154	100/120V-15A 3-wire, w/grounded plug
*	8074317	100/208/240V-16A 3-Wire with Plug LOV CE Single Phase
*	8071685	100/208/240V-18A 3-wire, w/o plug
*	130141418	120V 5-wire, w/grounded plug LOV Single Phase
*	8075678	120V 5-wire, w/grounded plug LOV Single Phase (<i>Singapore</i>)
*	8073817	208/240V 3-Phase 4-wire w/grounded plug
*	8073836	208/240V 3-Phase 4-wire w/grounded plug 92" CE
*	8075105	230/400V 3-Phase 4-wire w/grounded plug 105" CE 4 battery or larger
*	8074668	208/240V 3-Phase 4-wire w/grounded plug 96"
*	8073839	208/240V 3-Phase 4-wire w/grounded plug 96"
*	8076329	220/250V 3-Phase 4-wire w/grounded plug 109" Australia
Connectors and Tools		
1	8071068	2-Pin Female
2	8070158	6-Pin Female
3	8070156	9-Pin Female
5	8070159	12-Pin Female
5	8070875	15-Pin Female
6	8071067	2-Pin Male
7	8070157	6-Pin Male
8	8070155	9-Pin Male
9	8070160	12-Pin Male
10	8070804	15-Pin Male
11	8261341	Terminal, Female Split Pin (Pkg of 25)
12	8261342	Terminal, Male Split Pin (Pkg of 25)
13	8072518	Plug, Mate-N-Lock (Dummy Pin)
14	8070928	Extract Tool Pin Pusher
15	8064855	Pin Pusher Screwdriver Assembly
16	2302345	SMT Pin Extractor
*	8074660PK	SMT Pin Service Repair Kit

* Not illustrated.

1.14 Fasteners

ITEM	PART #	COMPONENT
*	8090429	Bolt, ¼-inch – 20 x 2.00-inch Hex Head ZP Tap
*	8090131	Bolt, ¼-inch -20 x ¾-inch Hex
*	8091020	Cap Screw, 5/16-inch-18 5.50" NC Hex (<i>Connects pump to motor.</i>)
*	8090448	Clip, Tinnerman
*	8261366	Nut, 4-40 Keps Hex (Pkg. of 25) (8090237)
*	8261358	Nut, 6-32 Keps Hex (Pkg. of 25) (8090049)
*	8090247	Nut, 8-32 Keps Hex
*	8261376	Nut, 10-32 Keps Hex (Pkg. of 10) (8090256)
*	8090766	Nut, 10-32 Keps Hex SS
*	8090581	Nut, ½ NPT Locking
*	8090020	Nut Cap 10-24 NP
*	8261372	Nut Grip ¼-inch ¼-20 Hex NP (Pkg. of 10) (8090059)
*	8090417	Nut Flange ¼-inch ¼-20 Serr
*	8090535	Nut, "T" ¼-inch-20 x 7/16 SS
*	8090495	Nut, ¼-inch – 20 Press
*	8090540	Nut, Lock ½-inch-13 Hex 2-Way ZP
*	8261359	Screw, 4-40 x ¾-inch Slotted Round Head (Pkg. of 25) (8090354)
*	8261365	Screw, 6-32 x ¾-inch Slot Head (Pkg. of 25) (8090095)
*	8090357	Screw, 6 x ¾-inch Phillips Head NP
*	8090359	Screw, 8 x ¼-inch Hex Washer Head
*	8090360	Screw, 8 x ¾-inch Hex Washer Slot Head
*	8261371	Screw, 8 x ½-inch Hex Head ZP (Pkg. of 25) (8090361)
*	8090364	Screw, 8 x ⅝-inch Hex Washer Head ZP
*	8090518	Screw, 8-32 x ¾-inch Hex Washer Slotted Head SS
*	8090104	Screw, 8-32 x ½-inch Slotted Head ZP
*	8261363	Screw, 8-32 x ½-inch NP (Pkg. of 25) (809-0103)
*	8261360	Screw, 10-24 x 5/16-inch Round Slot Head ZP (Pkg. of 25) (8090024)
*	8261330	Screw, 10-32 x ¾-inch Slot Head SS (Pkg. of 25) (8090117)
*	8091003	Screw, 10-32 x ¾-inch Hex Trim Head SS
*	8090270	Screw, 10-32 x ½-inch Phillips Head ZP
*	8261375	Screw, 10-32 x ¾-inch Hex Trim Head SS (Pkg. of 5) (8090401)
*	8091000	Screw, 10-32 x 1¼-inch Hex Sck C/S
*	8261374	Screw, 10 x ½-inch Hex Head (Pkg. of 25) (8090412)
*	8090266	Screw, 10 x ½-inch Phillips Head ZP
*	8090434	Screw, 10 x ¾-inch Hex Washer Head NP
*	8090123	Screw, 10 x ¾-inch Slot Head
*	8261389	Screw, 1/4-20 x ¾-inch Hex Head ZP (Pkg. of 10) (8090131)
*	8090582	Washer ½ NPT Locking
*	8090184	Washer, #10 LK ZP
*	8090190	Washer, .625 X .275 X 40 Flat SS
*	8090191	Washer, Lock ¼ Spring ZP
*	8090193	Washer, Flat ¼ Nylon
*	8090194	Washer, Flat 5/16 ZP

1.15 Itto Can /Front Dispose Components Japan only



ITEM	PART #	COMPONENT
1	1086183	Faucet, Itto Can Dispose Assembly
2	8100490	Quick Disconnect ½-inch Female
3	8130460	Nipple, ½" x 3.00 inch NPT BM Pipe
4	8238988	Faucet, Itto Can Dispose
5	8103270	Fitting, ⅜" Flare x ¼" NPT
6	8130304	Bushing, ½" x ¼"
7	8239008	Mount, Front Dispose

* Not illustrated. ✓ Recommended parts.

Frymaster[®]

FRYMASTER
8700 LINE AVENUE, SHREVEPORT, LA 71106-6800

800-551-8633
318-865-1711
WWW.FRYMASTER.COM
EMAIL: FRYSERVICE@WELBILT.COM



Welbilt offers fully-integrated kitchen systems. Welbilt's portfolio of award-winning brands includes Cleveland™, Convotherm®, Crystal Tips®, Dean®, Delfield®, Fabristeel®, Frymaster®, Garland®, Inducs®, Koldtech®, Kolpak®, Lincoln®, McCann's™, Merco®, Merrychef®, Multiplex®, RDI®, SerVend™, SunFire®, U.S. Range™, and WMaxx™. Supported by service brands: FitKitchen®, kitchen systems; and KitchenConnect®, cloud-based open platform.

Bringing innovation to the table • welbilt.com

©2024 Frymaster LLC. except where explicitly stated otherwise. All rights reserved. Continuing product improvement may necessitate change of specifications without notice.

Part Number FRY_P_8197342 12/2024