

Frymaster[®]

We Fit the Way You Fry[™]

FQE60U FilterQuick[™] easyTouch[®] Electric Fryer

Parts Manual

This manual is updated as new information and models are released. Visit our website for the latest manual.



Part Number: FRY_P_8197627 04/2025



NOTICE

IF, DURING THE WARRANTY PERIOD, THE CUSTOMER USES A PART FOR THIS FRYMASTER DEAN EQUIPMENT OTHER THAN AN UNMODIFIED NEW OR RECYCLED PART PURCHASED DIRECTLY FROM FRYMASTER DEAN, OR ANY OF ITS FACTORY AUTHORIZED SERVICERS, AND/OR THE PART BEING USED IS MODIFIED FROM ITS ORIGINAL CONFIGURATION, THIS WARRANTY WILL BE VOID. FURTHER, FRYMASTER DEAN AND ITS AFFILIATES WILL NOT BE LIABLE FOR ANY CLAIMS, DAMAGES OR EXPENSES INCURRED BY THE CUSTOMER WHICH ARISE DIRECTLY OR INDIRECTLY, IN WHOLE OR IN PART, DUE TO THE INSTALLATION OF ANY MODIFIED PART AND/OR PART RECEIVED FROM AN UNAUTHORIZED SERVICER.

FQE60U easyTouch® FILTERQUICK™ SERIES ELECTRIC FRYERS

PARTS MANUAL

TABLE OF CONTENTS

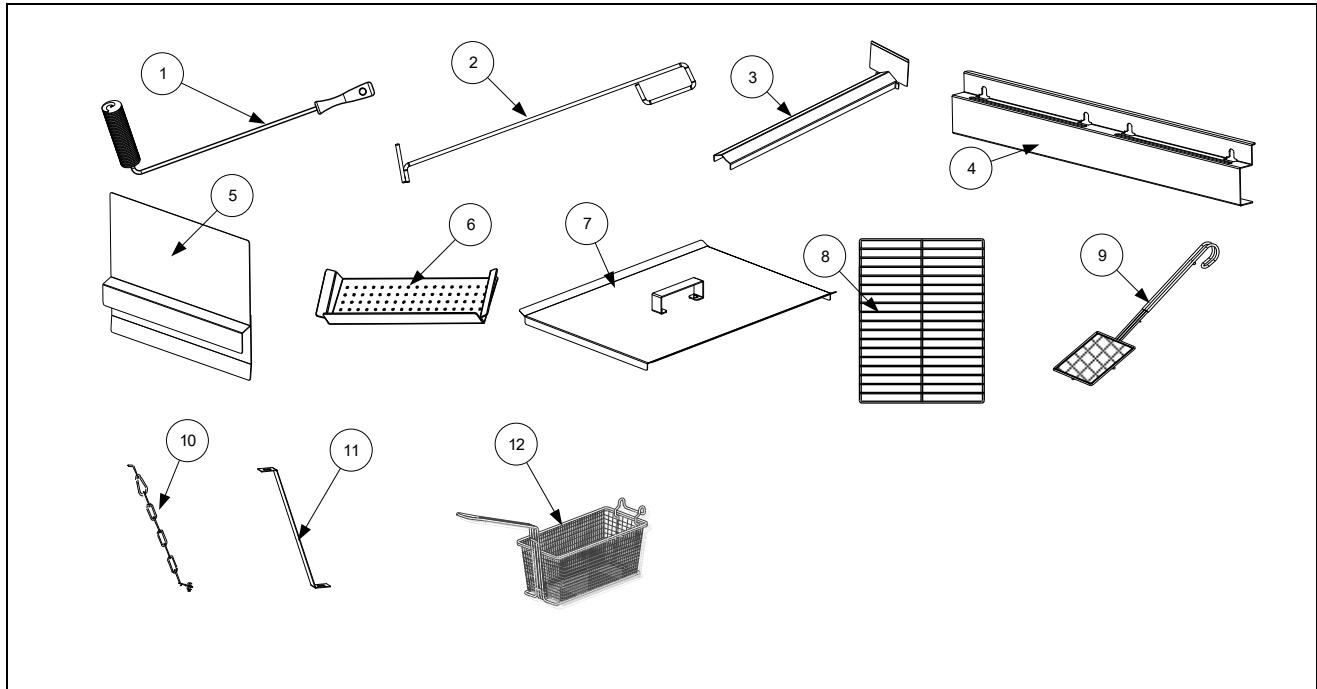
CHAPTER 1: Parts List

1.1	Accessories.....	1-1
1.2	Doors, Sides, Tilt Housings, Top Caps and Casters.....	1-2
1.3	Control Panel Frame Assemblies	1-3
1.4	Drain Tube Sections and Associated Parts	1-4
1.5	Electronics and Wiring Components	1-5
1.5.1	Component Boxes and Associated Components	1-5
1.5.2	Contactor Boxes	1-7
1.5.3	Heating Element Assemblies and Associated Parts.....	1-9
1.5.3.1	Element Assemblies and Hardware	1-9
1.5.3.2	Element Tube Assemblies	1-10
1.5.4	VIB (Valve Interface Board) Components.....	1-11
1.5.5	Power Reset Switch and USB Connector.....	1-11
1.5.6	Wiring.....	1-12
1.5.6.1	Contactor Box Wiring Assemblies 12-Pin C-1.....	1-12
1.5.6.2	Contactor Box Wiring Assemblies 6-Pin Left Element	1-12
1.5.6.3	Contactor Box Wiring Assemblies 9-Pin Right Element.....	1-12
1.5.6.4	Main Wiring Harness	1-13
1.5.6.5	Component Box Wiring Harness	1-14
1.5.6.6	FIB (Filter Interface Board) Wiring Harness.....	1-14
1.5.6.7	Wiring Harness Dispose, Pan Switch, Bulk.....	1-15
1.5.6.8	Cord Sets and Basket Lift Harness	1-15
1.6	Frypots and Associated Components.....	1-16
1.6.1	Frypot Components	1-16
1.7	Oil Return Manifolds	1-17
1.8	Filtration System Components	1-18
1.8.1	Filter Pan and Accessories	1-18
1.8.1.1	MasterFil Filter Pan and Accessories	1-19
1.8.2	Filter Pump and Accessories (1FQE60T).....	1-20
1.8.3	Filter Pump and Accessories (2FQE60T, 3FQE60T)	1-22
1.8.4	Plumbing Bulk/Return (1FQE60T).....	1-24
1.8.5	Plumbing Bulk/Return (2FQE60T, 3FQE60T).....	1-26
1.9	ATO (Auto Top-Off) Components	1-28
1.9.1	Side Saddle Assembly	1-28
1.9.2	ATO (Auto Top Off) Pump Assembly (1FQE60T).....	1-29
1.9.3	ATO (Auto Top Off) Pump Assembly (2FQE60T, 3FQE60T)	1-30
1.10	Bulk Oil System Components	1-31
1.10.1	Bulk Oil Dispose Waste Valve	1-31
1.10.2	Bulk Connection – Rear (1FQE60T).....	1-32
1.10.3	Bulk Connection – Rear (1FQE60T).....	1-32
1.11	Basket Lift Assembly and Associated Parts	1-33
1.11.1	Basket Lift Assembly and Associated Parts - Prior to June 2019.....	1-33
1.11.2	Basket Lift Assembly and Associated Parts - After June 2019 (<i>Modular</i>)	1-35
1.12	FilterQuick™ FQE60U-T Series Wiring.....	1-37

FQE60U easyTouch® FILTERQUICK™ SERIES ELECTRIC FRYERS

PARTS LIST

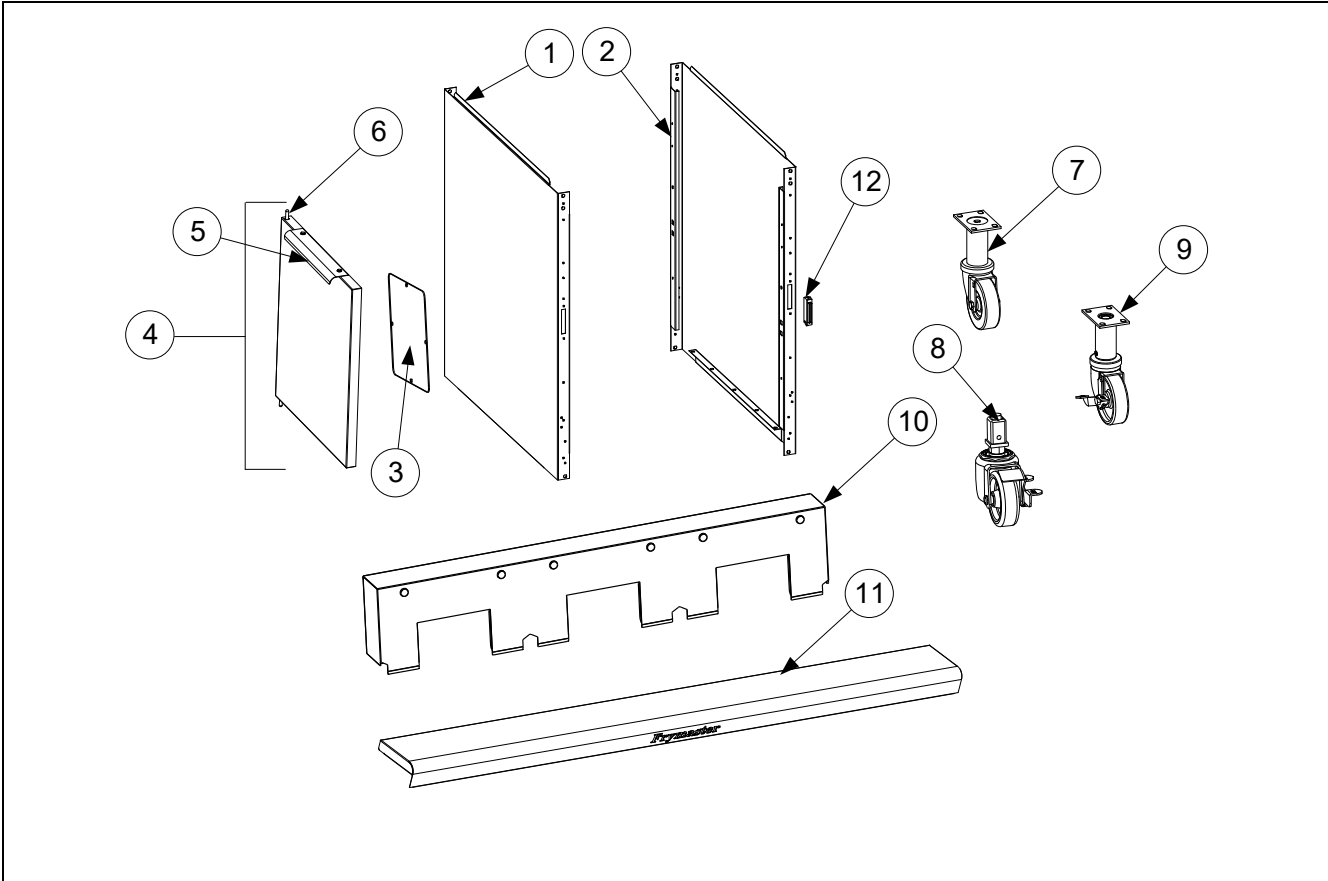
1.1 Accessories



ITEM	PART #	COMPONENT
1	8030278	BRUSH, FRYPOT
2	8030388	FRYERS FRIEND
3	8239574	CONNECTING STRIP, FRYPOT (2FQE60, 3FQE60)
*	8238771	CONNECTING STRIP, FRYPOT BANGER LEFT (USED WITH ITEM #6 BELOW)
*	8238770	CONNECTING STRIP, FRYPOT BANGER CENTER (USED WITH ITEM #6 BELOW)
*	8238772	CONNECTING STRIP, FRYPOT BANGER RIGHT (USED WITH ITEM #6 BELOW)
4	2304318	HANGER, BASKET (1FQE60) (LEFT VAT 2FQE60)
	2308464	HANGER, BASKET (RIGHT VAT 2FQE60)
	2600957	HANGER, BASKET (3FQE60)
5	8239625	GUARD, SPLASH
6	2600623	INSERT, FOAM DECK (BANGER) (REQUIRES BANGER CONNECTING STRIPS ABOVE)
7	8239402	COVER, FRYPOT
8	8030380	BASKET SUPPORT RACK
9	8030406	SKIMMER
10	8260900	KIT, CHAIN RESTRAINT
11	8261095	KIT, ANCHOR STRAP
12	8030357	BASKET, TRIPLE SIZE 4.50" WIDE X 6" TALL
	8030271	BASKET, TWIN SIZE 5.89" WIDE X 5.50" TALL
	8030437	BASKET, DUAL SIZE 7.94" WIDE X 7" TALL
*	8030002	POWDER, FILTER (80- 1-CUP APPLICATIONS)
*	8030170	PACK, 100-SHEET FILTER PAPER 19.5" X 27.5" (1FQE60)
*	8030289	PACK, 100-SHEET FILTER PAPER 22" X 34" (2FQE60, 3FQE60)

* Not illustrated.

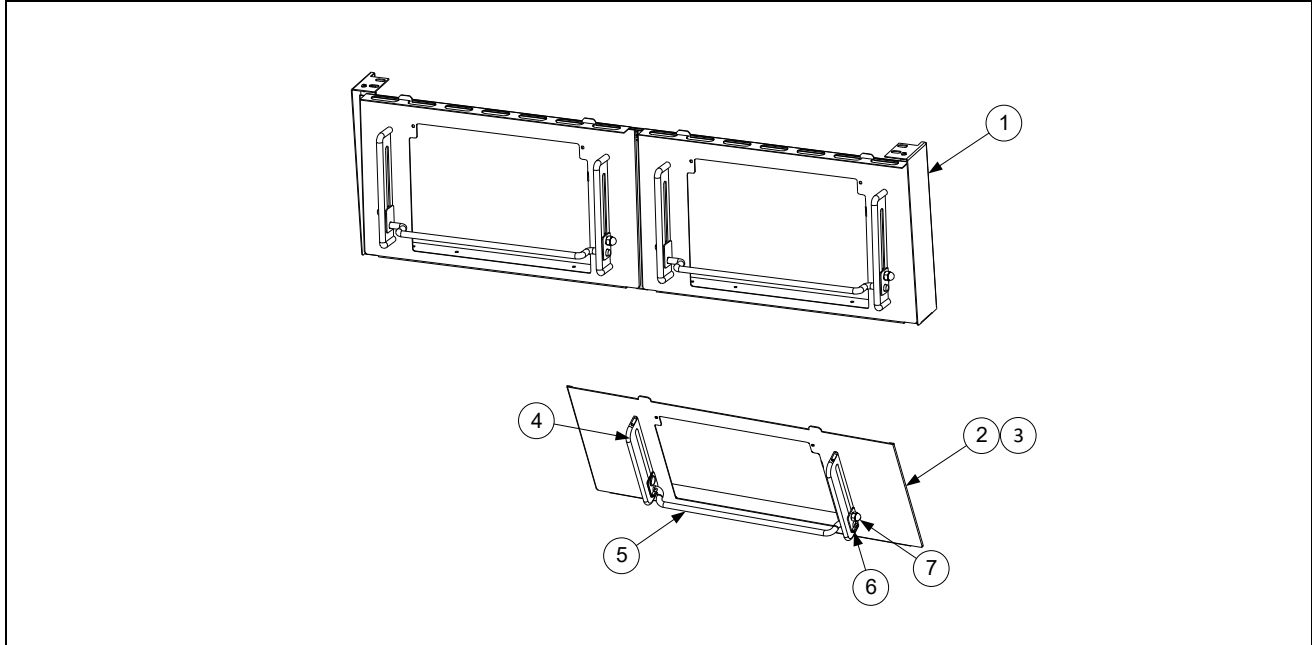
1.2 Doors, Sides, Tilt Housings, Top Caps and Casters



ITEM	PART #	COMPONENT
1	2601605	SIDE, CABINET LEFT (1FQE60)
	2318263	SIDE, CABINET LEFT (2FQE60, 3FQE60)
2	2601604	SIDE, CABINET RIGHT (1FQE60)
	2328263	SIDE, CABINET RIGHT (2FQE60, 3FQE60)
3	2601605	COVER, CABINET SIDE HOLE
4	1067710	DOOR, (1FQE60)
	1084174	DOOR, (LEFT - 2FQE60, 3FQE60)
	1064309	DOOR, (MIDDLE 3FQE60, RIGHT - 2FQE60, 3FQE60)
5	2108077	HANDLE, DOOR
6	1064067	PIN ASSEMBLY, DOOR
*	8100275	SPRING, DOOR PIN
*	8100658	RETAINING RING
*	8104916	CLIP, PANEL U-SHAPED W/BARBS
*	8121328	HINGE, DOOR LOWER (1FQE60)
*	2307192	HINGE, DOOR LOWER (2FQE60, 3FQE60)
7	8122227	CASTER, REAR, 4" WITHOUT BRAKE (1FQE60)
8	8232844	CASTER, FRONT 3" WITH BRAKE (1FQE60)
9	8102280	CASTER, 3" WITH BRAKE (2FQE60, 3FQE60)
10		TILT HOUSING
	8236716	1FQE60
	8238036	2FQE60
	8238913	3FQE60
11		TOP CAP
	1081722	1FQE60
	1087494	2FQE60
	1087532	3FQE60
12	8101105	MAGNET, DOOR

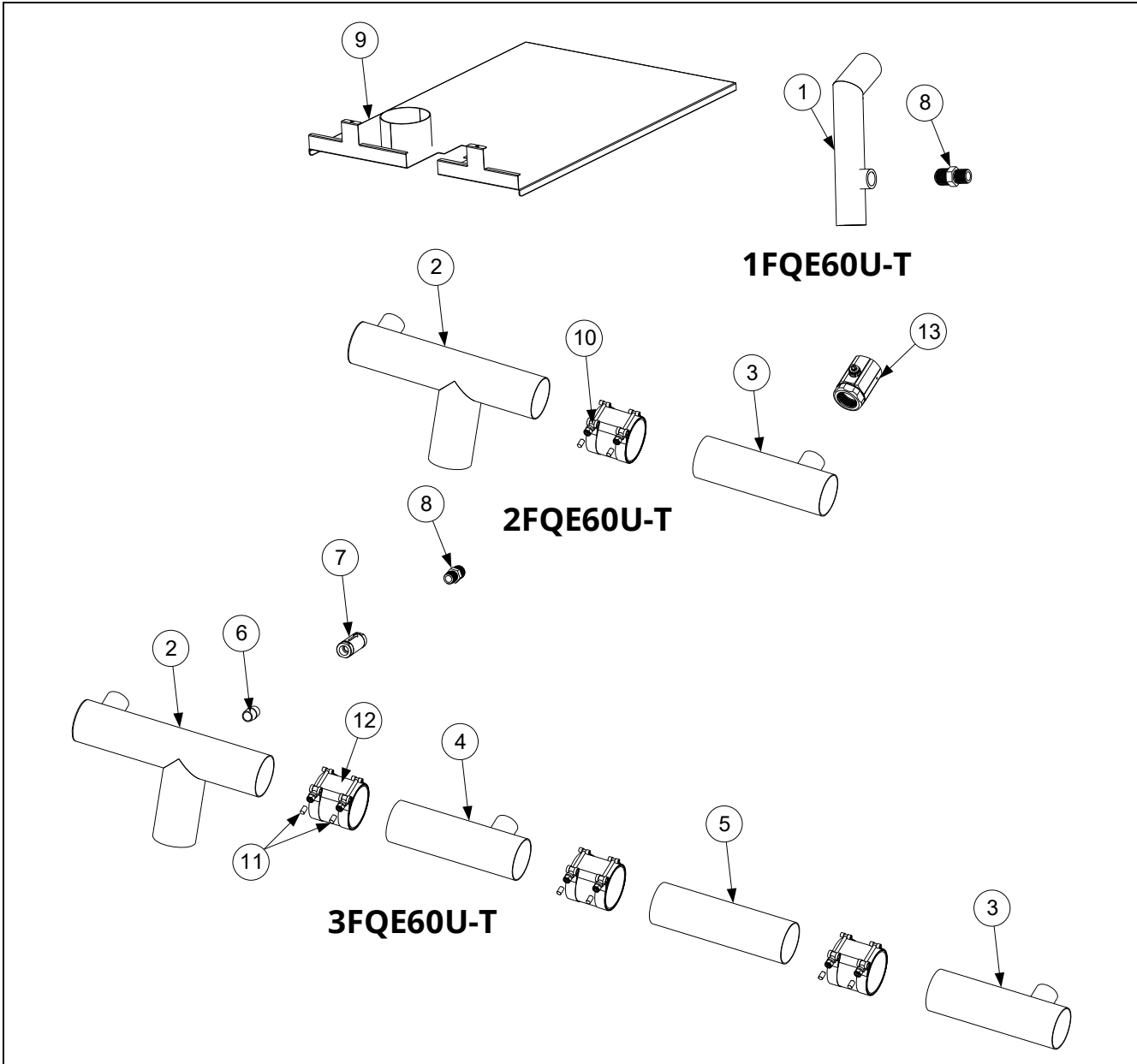
* Not illustrated.

1.3 Control Panel Frame Assemblies



ITEM	PART #	COMPONENT
1	1087819	FRAME ASSEMBLY, CONTROL (1FQE60)
	1088348	FRAME ASSEMBLY, CONTROL (2FQE60)
	1088357	FRAME ASSEMBLY, CONTROL (3FQE60)
2	1088358	BEZEL ASSEMBLY, CONTROL FQ60
3	2602074	BEZEL, S1814 SINGLE TOUCHSCREEN
4	8104898	GUIDE, UIB ADJUSTABLE GUARD
5	8104899	BAR, GUARD (TOUCH SCREEN PROTECTION)
6	8104714	PLATE, OUTSIDE TIGHTENING
7	8090047	NUT, CAP ¼-20

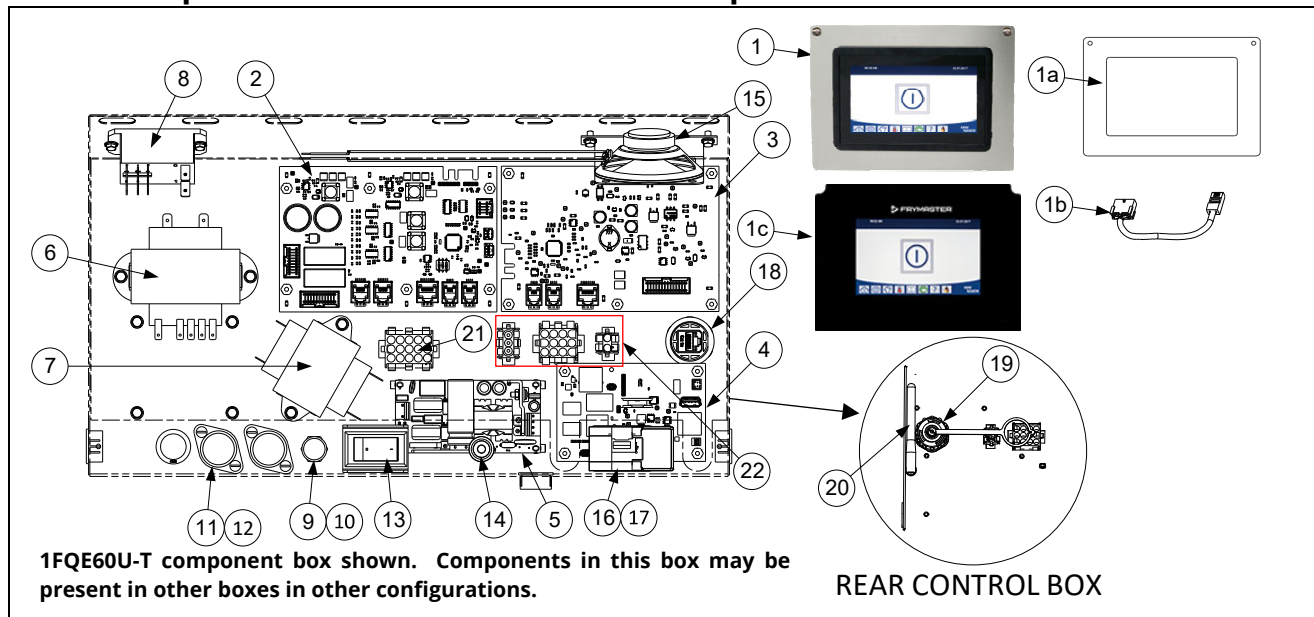
1.4 Drain Tube Sections and Associated Parts



ITEM	PART #	COMPONENT
1	8239206	TUBE, DRAIN DOWNSPOUT FQ1814E 1FQE60
2	8239334	TUBE, 3" DRAIN SHORT LH DOWNSPOUT 2FQE60, 3FQE60
3	8239345	TUBE, FQE60 3" DRAIN SHRT RH 2FQE60, 3FQE60
4	8239350	TUBE, 3FQE60 3" DRN SHRT MID 3FQE60
5	8122235	TUBE, BK21817/RE114 PAINTED DRN 3FQE60
6	8130022	NIPPLE, ½" X CLOSE NPT
7	8103531	VALVE, CHECK 20PSI (8105084 ALTERNATIVE REPLACEMENT)
8	8101668	ADAPTOR, MALE ⅜" OD X ½"
9	8239346	LID W/A, FQE60 FILTER PAN 2FQE60, 3FQE60
	8239607	LID W/A, FQ1814E FLTR PAN FIXED 1FQE60
10	8091095	CLAMP
11	8160665	VINYL CAP
12	8160772	SLEEVE, DRAIN CONNECTOR
*	8160544	O-RING SEAL - DRAIN
13	8263817	VALVE, DRAIN 1½" NPT KIT (INCLUDES 8160544 O-RING)

1.5 Electronics and Electrical Components

1.5.1 Component Boxes and Associated Components

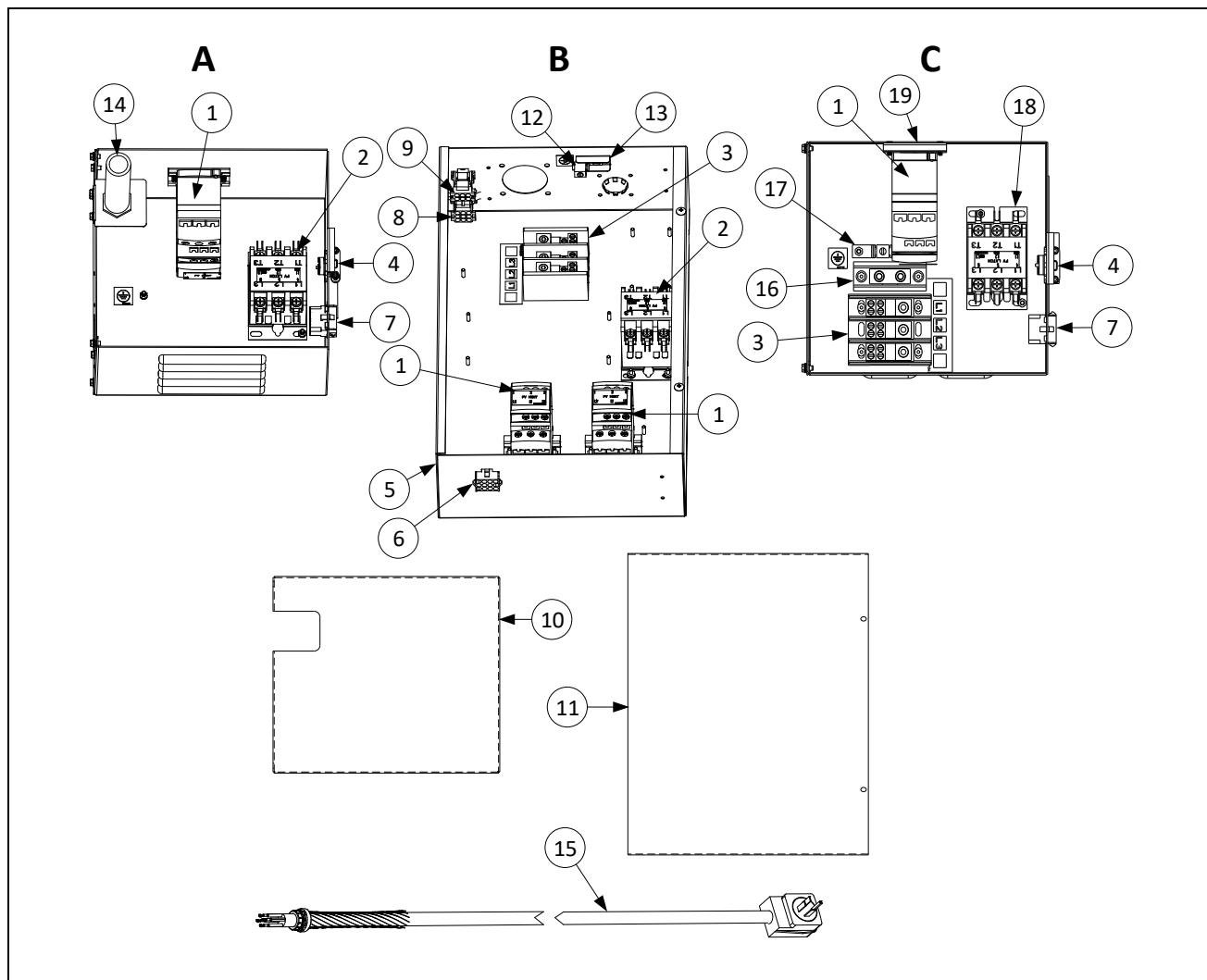


ITEM	PART #	COMPONENT
√ 1	1089417SP	CONTROLLER, FQ4000 BUFFALO WILD WINGS (for fryers manufactured 09/2022 to Present)
	1089551SP	CONTROLLER, FQ4000 DAVE & BUSTER'S (for fryers manufactured 09/2022 to Present)
	1089399SP	CONTROLLER, FQ4000 GENERAL MARKET (for fryers manufactured 09/2022 to Present)
	1089405SP	CONTROLLER, FQ4000 RACETRAC (LEFT & MIDDLE) (for fryers manufactured 09/2022 to Present)
	1089406SP	CONTROLLER, FQ4000 RACETRAC (FAR RIGHT) (for fryers manufactured 09/2022 to Present)
	1089401SP	CONTROLLER, FQ4000 SPEEDWAY (for fryers manufactured 09/2022 to Present)
1a	130000329	BEZEL, COMMON UI (<i>Metal Bezel only</i>)
1b	8076596	4000 XFER CABLE (<i>Connects Common UI Controller to SIB Board</i>)
√ 1c	1089208SP	CONTROLLER, FQ4000 BUFFALO WILD WINGS (for fryers manufactured prior to 09/2022)
	1088526SP	CONTROLLER, FQ4000 GENERAL MARKET (for fryers manufactured prior to 09/2022)
	1088914SP	CONTROLLER, FQ4000 RACETRAC (LEFT/MIDDLE CNTRLR) (for fryers prior to 09/2022)
	1088922SP	CONTROLLER, FQ4000 RACETRAC (FAR RIGHT CONTROLLER) (for fryers prior to 09/2022)
	1088536SP	CONTROLLER, FQ4000 SPEEDWAY (for fryers manufactured prior to 09/2022)
*	8105076	LANYARD, CONTROLLER RESTRAINT
√ 2	1087511SP	BOARD, INTERFACE SIB (SMART INTERFACE BOARD)
√ 3	1087513SP	BOARD, FIB W/ SOFTWARE
4	8076148	BOARD, FQ4000 KCCM (SUI)
√ 5	8263684	POWER SUPPLY, 24VDC 130W ATO
√ 6	8075362	TRANSFORMER, 115-240V 80VA 24VAC (SIB)
√ 7	8070680	TRANSFORMER, 208/240/24V, 50/60HZ, 20VA (208/240V) (BULK FRESH OIL SOLENOID ONLY)
	8070800	TRANSFORMER 120 50/60-24V 50VA FOR (120V) (BULK FRESH OIL SOLENOID ONLY)
√ 8	8074482	RELAY, DPDT 30A 24VDC (FILTER PUMP)
√ 9	8071321	FUSE HOLDER
10	8075570	FUSE 3.5A 250V
√ 11	8070922	HOLDER, BUSS FUSE HPS
√ 12	8072278	FUSE, 20 AMP
√ 13	8074036	SWITCH, UHC-P TIG SERIES
14	8074678	SWITCH, MOMENTARY (TOPOFF OIL RESET BUTTON)
15	8075829	SPEAKER 4 OHM
16	8074989	BEZEL, USB PORT (KCCM USB)
17	2207520	PLATE, BACKING USB BEZEL UHCHD
18	8075967	COUPLER, 8P8C TO 8P8C

ITEM	PART #	COMPONENT
19	8075970	CAP, DUST
20	8075975	ANTENNA
21	8075951	HARNESS, FV JLOV ELEC CONTROLS (SIB J1 TO J4 IN CONTROL BOX)
22	8076419	HARNESS, FQE60 FIB/BULK/ATO (FIB J1 TO 12-PIN BULK, 3-PIN ATO PUMP, 2-PIN FILTER ON CONTACTS)
		SEE THE FQE60U-T WIRING DIAGRAM ON LAST PAGE.
*	8075555	CABLE, P-BUS W/ POWER SIB (J10) TO VIB (VALVE INTERFACE BOARD) (J2)
*	8075549	CABLE, C-BUS SIB (J7) TO FIB (FILTRATION INTERFACE BOARD) (J3) VAT #1
*	8075550	CABLE, C-BUS SIB (J8) TO SIB (J7) VATS #2 & #3
*	8076225	CABLE, U. FL TO RP-SMA BULKHEAD (CONNECTS KCCM (SUI) TO ANTENNA 8075975 (ITEM 20))
*	8075977	CABLE, RJ45 OVERMOLD CAT5E 0.2MM (CONNECTS KCCM (SUI) RJ45 TO 8075967 (ITEM 18))
*	8074990	CABLE, USB UHCHD (CONNECTS KCCM (SUI) USB TO 8074989 (ITEM 16))
*	8076106	ADAPTER, RJ11 CAN SIB (J8) TO LEGACY 6-PIN CAN (MICRO MATE & LOCK) (OQS SENSOR TO SIB 5")
*	8074552	TERMINATOR, CAN (ONLY USED ON OQS HARNESS Y- ADAPTOR)
*	8075632	TERMINATOR, CAN END COMMUNICATION RJ11 (USED IN SIB J8 IF OQS IS NOT INSTALLED)
*	8076241	HARNESS, 130W/24VDC PWR SUPPLY SUI BOARD PWR/COM (WAGOS & PWR SUPPLY)
*	8076242	HARNESS, DATALINK PWR/COM (POWER SUPPLY TO KCCM (SUI) BOARD)
*	8076315	CABLE, XL VIB ACTUATOR POWER (FIB J2 TO VIB J4)
*	8075810	CABLE, VIB ACTUATOR POWER (USED FROM VIB (J3) TO VIB (J4))
*	WIR1232	WIRES, FQE60U CONTROL BOX

* Not illustrated. ✓ Recommended parts.

1.5.2 Contactor Box Boxes



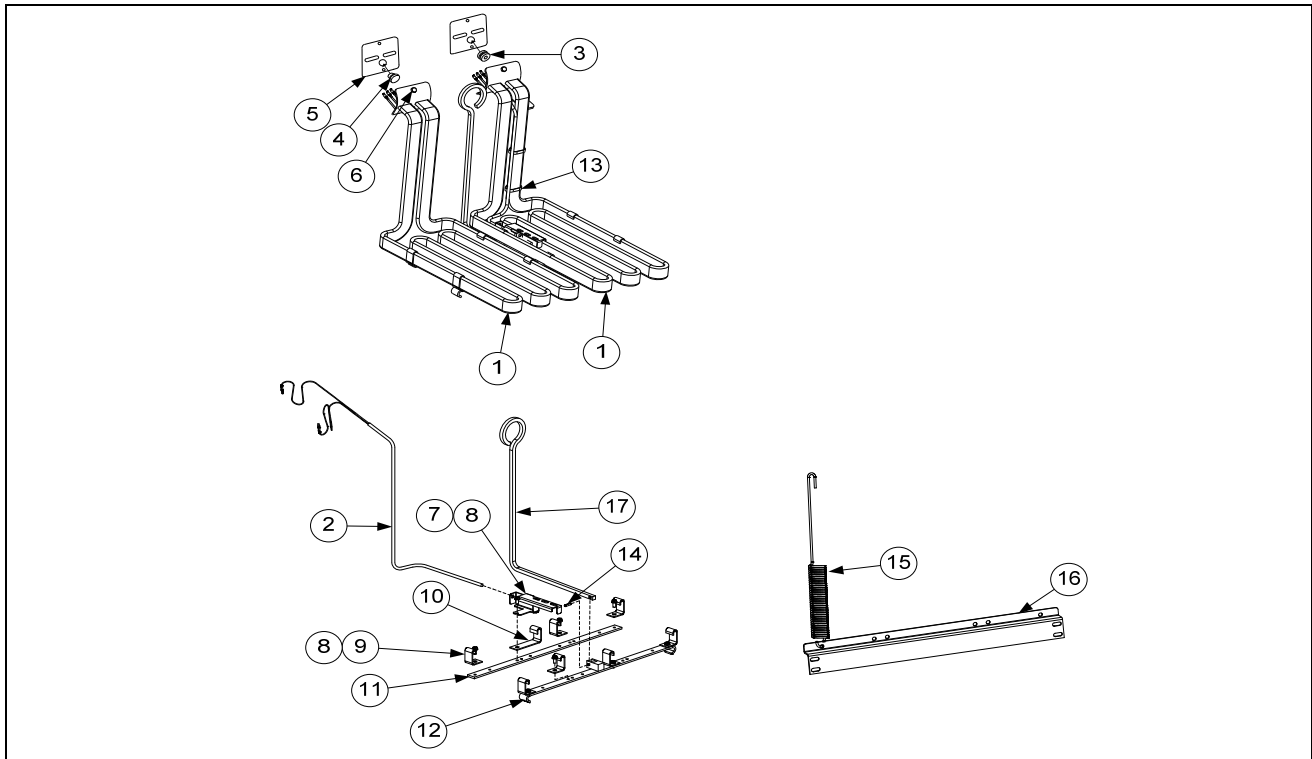
ITEM	PART #	COMPONENT
A	1086999SP	BOX, CONTACTOR ASSEMBLY 1FQE60
B	1083721SP	BOX, CONTACTOR ASSEMBLY LEFT 2FQE60, 3FQE60
C	130029041	BOX, CONTACTOR 1FQE60 (17KW WYE)
*	1083722SP	BOX, CONTACTOR ASSEMBLY RIGHT 2FQE60, 3FQE60
✓ 1	8076169	CONTACTOR, 24V COIL 50 AMP MECHANICAL (HEAT)
✓ 2	8101202	CONTACTOR, 24V 40 AMP MECHANICAL (LATCH)
3	8073970	BLOCK, 3 POLE 600V 175A TERMINAL
4	1080158SP	HARNESS ASSY, 208/240V CONTACTOR BX POWER 1FQE60
5	1081901SP	HARNESS, ASSY, 208/240 CONTACTOR BX POWER 2FQE60, 3FQE60 (LEFT CONTACTOR BX)
6	1065815SP	HARNESS, ASSY, 208/240 CONTACTOR BX POWER 2FQE60, 3FQE60 (RIGHT CONTACTOR BX)
7	1080159SP	HARNESS ASSY, CONTACTOR BOX CONTROL 2FQE60, 3FQE60
7	1087516SP	HARNESS ASSY, CONTACTOR BOX CONTROL 1FQE60
8	1068745SP	HARNESS ASSY, RE MDI CONTACTOR BOX 9 PIN
9	1068744SP	HARNESS ASSY, RE MDI CONTACTOR BOX 6 PIN
10	2401440	COVER, CONTACTOR BOX 1FQE60
11	2208502	COVER, CONTACTOR BOX 2FQE60, 3FQE60
12	8070070	TERMINAL, GROUND LUG 2FQE60, 3FQE60
13	2006809	BRACKET, GROUND LUG HOLDER 2FQE60, 3FQE60
14	1068932	BRACKET ASSEMBLY, ELEMENT MOUNTING 1FQE60
15	8075625	CORD SET, 4 GAUGE, 4 WIRE WITH STRAIN RELIEF

ITEM	PART #	COMPONENT
16	8071268	SPLICER, TERMINAL BLOCK SINGLE POLE
17	8075351	TERMINAL, GROUND LUG 90AMP
18	8101202	CONTACTOR, 40AMP 3 POLE
19	8104816	IEC CONTACTOR MOUNTING PLATE
*	WIR0710	WIRE ASSY, RE CONTACTOR BOX W MDI 1FQE60
*	WIR1176	WIRE ASSY, RE FV LATCH/HEAT J 1FQE60
*	WIR0723	WIRE ASSY, RE 17KW FV DELTA EXT 2FQE60, 3FQE60
*	WIR1011	WIRE ASSY, RE FV 22KW WYE JUMPER W MDI 2FQE60, 3FQE60
*	WIR1012	WIRE ASSY, RE FV 22KW CONTACTOR BOX 2FQE60, 3FQE60
*	WIR0717	WIRE ASSY, RE FV WYE JUMPER W MDI 1FQE60 (17KW WYE)
*	WIR0872	WIRE ASSY, RE 17KW FV WYE EXT 1FQE60 (17KW WYE)

* Not illustrated. ✓ Recommended parts.

1.5.3 Heating Element Assemblies and Associated Parts

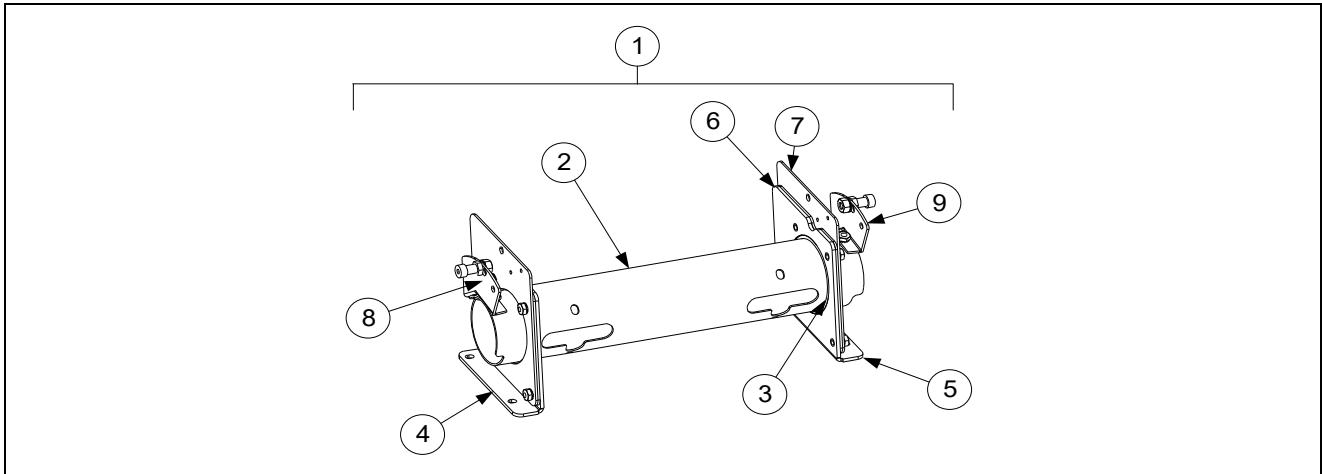
1.5.3.1 Element Assemblies and Hardware



ITEM	PART #	COMPONENT
1		ELEMENT KITS – INCLUDES GASKETS, GROMMETS, TIE WRAPS, SCREWS AND NUTS.
	8262557	208V 8.5 KW
	8262707	230V 8.5 KW
	8262558	240V 8.5KW
	8263020	480V 8.5KW
√ 2	8263605	PROBE, TEMPERATURE FQE60 – INCLUDES TIE WRAPS AND GROMMET.
3	8160681	GROMMET, PROBE
4	8160480	PLUG, .375-INCH DOME
5	8160688	GASKET, ELEMENT
6	8091003	SCREW, 10-32 X 3/8-INCH HEX HEAD SS
*	8090766	NUT, 10-32 KEPS HEX HEAD SS
*	2304028	WRENCH, ELEMENT TUBE NUT SPANNER
7	2300784	BRACKET, TEMPERATURE PROBE 8.5 KW (17KW)
8	8090518	SCREW, 8-32 X 3/8-INCH SLOTTED HEX HEAD
9	9102042	CLAMP, ELEMENT (SHORT)
10	2300781	CLAMP, ELEMENT (LONG)
11	2304902	BRACKET, ELEMENT MOUNT FLAT FV
12	8236711	BRACKET, ELEMENT 1814
13	8090567	TIE-WRAP, METAL
14	8101212	PIN, .125 X .50-INCH SLOTTED
15	8103030	SPRING, ELEMENT LIFT LEFT
	8103031	SPRING, ELEMENT LIFT RIGHT
16	2204302	BRACKET, LOWER SPRING 1FQE60
	2208402	BRACKET, LOWER SPRING 2FQE60, 3FQE60
17	8101233	HANDLE, ELEMENT LIFT

√ Recommended parts

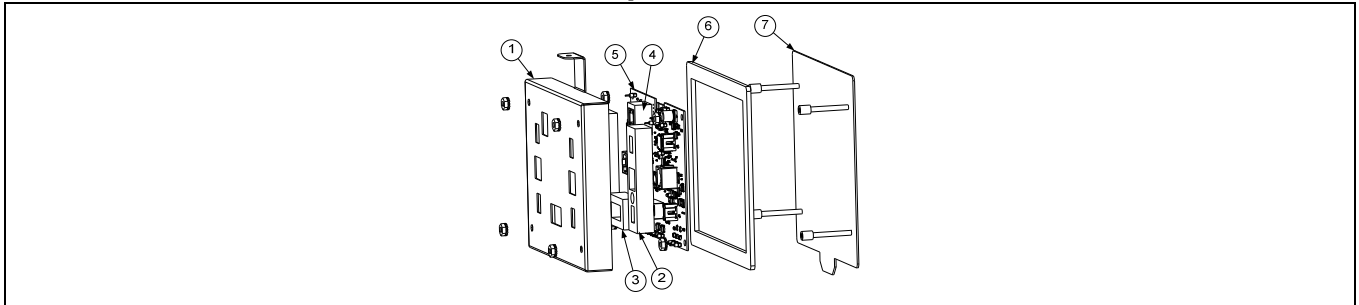
1.5.3.2 Element Tube Assemblies



ITEM	PART #	COMPONENT
1	1080293	TUBE ASSEMBLY, FULL-VAT 17 KW
2	8102992	TUBE, FULL VAT ELEMENT MOUNTING
3	8102993	BUSHING, TUBE END TEFLON
4	1080315	BRACKET ASSEMBLY, LH ELEMENT TUBE SUPPORT
5	1080316	BRACKET ASSEMBLY, RH ELEMENT TUBE SUPPORT
6	2200122	PLATE, ELEMENT TUBE SUPPORT INNER
7	2200123	PLATE, ELEMENT TUBE SUPPORT OUTER
8	1066569	BRACKET ASSEMBLY, LH UPPER SPRING
9	1066570	BRACKET ASSEMBLY, RH UPPER SPRING
*	8262598	KIT, TILT SWITCH
*	8074742	SWITCH, LONG LEVER HIGH TEMP

* Not illustrated

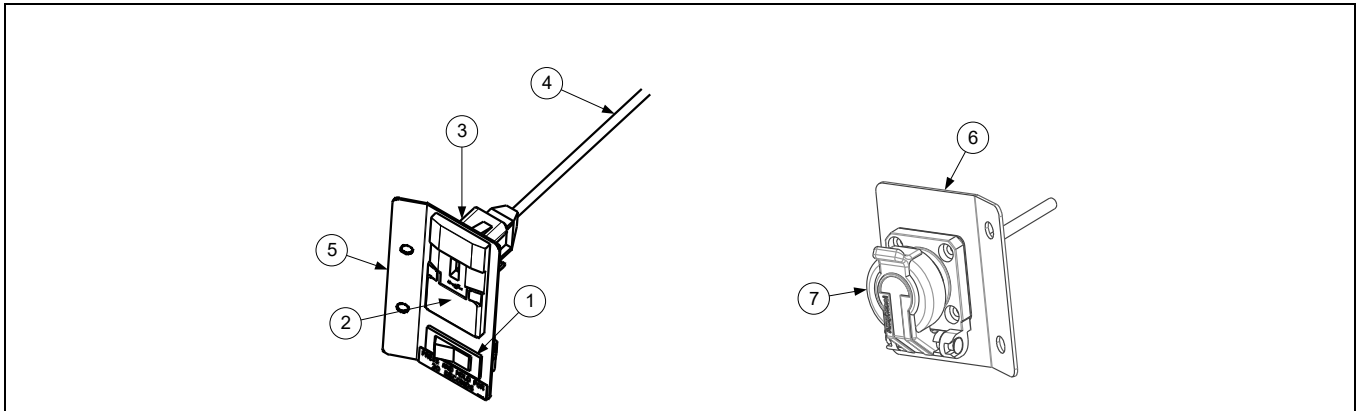
1.5.4 VIB (Valve Interface Board) Components



ITEM	PART #	COMPONENT
√	1087514SP	VIB BOARD ASSEMBLY
1	8242346	COVER, VIB BOARD HOUSING
2	8161015	GASKET, ACTUATOR POWER VIB
3	8161013	GASKET, 20 PIN VIB CONNECTOR
4	8161014	GASKET, P-BUS VIB CONNECTOR
5	1087512SP	BOARD, VIB WITH SW
6	8160820	SEAL, LINEAR ACTUATOR BOARD
7	1087280	PANEL, ASSY VIB BOX BOTTOM STUD
*	8076315	CABLE, XL VIB ACTUATOR POWER (FROM FIB (J2) TO VIB BOARD (J4))
*	8075810	CABLE, VIB ACTUATOR POWER (USED FROM VIB (J3) TO VIB (J4))

√ Recommended parts. * Not illustrated

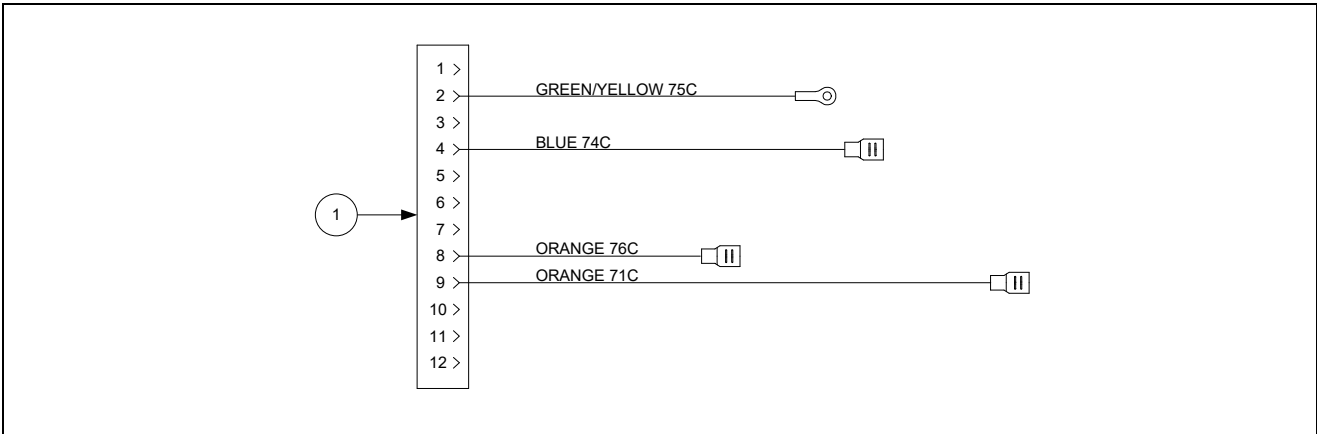
1.5.5 Power Reset Switch and USB Connector



ITEM	PART #	COMPONENT
	1087802	BRACKET ASSY, USB MOUNTING
1	8072659	SWITCH, MOMENTARY (POWER RESET) (USED WITH RESET HARNESS 1088233)
2	8074989	BEZEL, USB PORT
3	2207520	PLATE, BACKING USB BEZEL
4	8074990	CABLE, USB
5	2602065	BRACKET, FQ4000 USB/RESET
	130000191	BRACKET ASSY, USB MOUNTING ELEC
6	130000190	BRACKET, ELEC USB MOUNTING
7	8105041	USB, SELF-CLOSING FLANGE

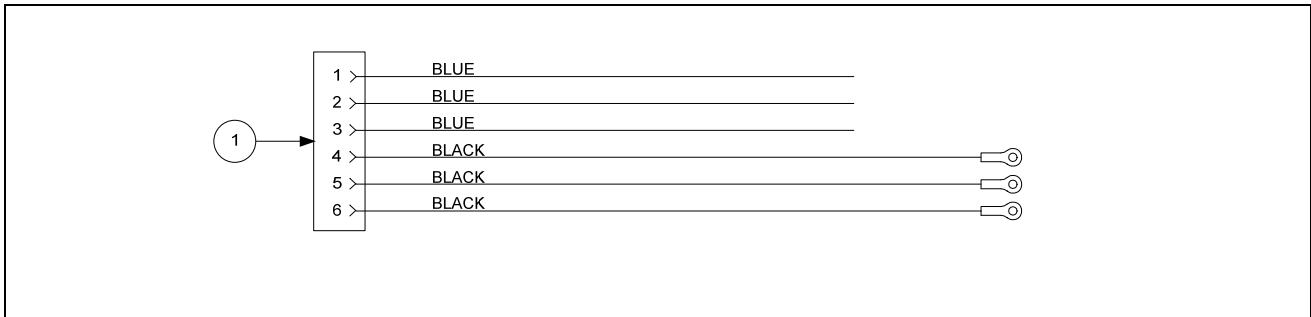
1.5.6 Wiring

1.5.6.1 Contactor Box Wiring Assemblies - 12-Pin C-1



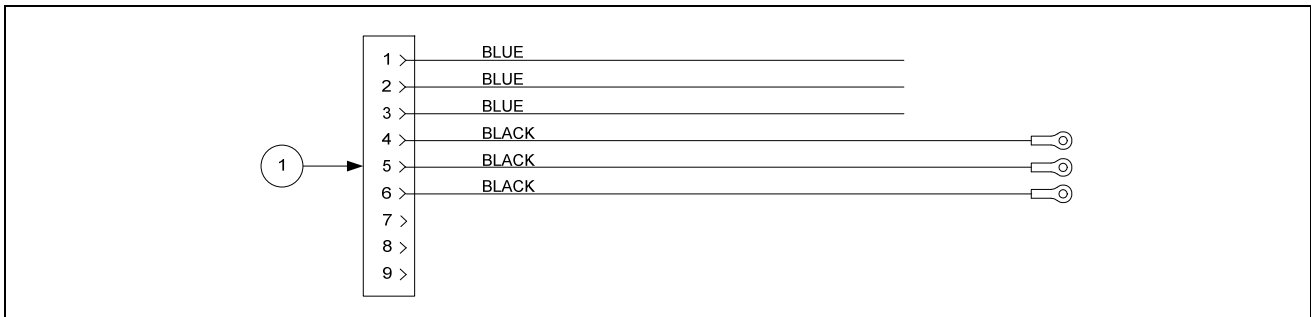
ITEM	PART #	COMPONENT
1	1087516SP	CONTACTOR BOX HARNESS ASSEMBLY FULL VAT 1FQE60
	1080159SP	CONTACTOR BOX HARNESS ASSEMBLY FULL VAT 2FQE60, 3FQE60

1.5.6.2 Contactor Box Wiring Assembly - 6-Pin (Left Element)



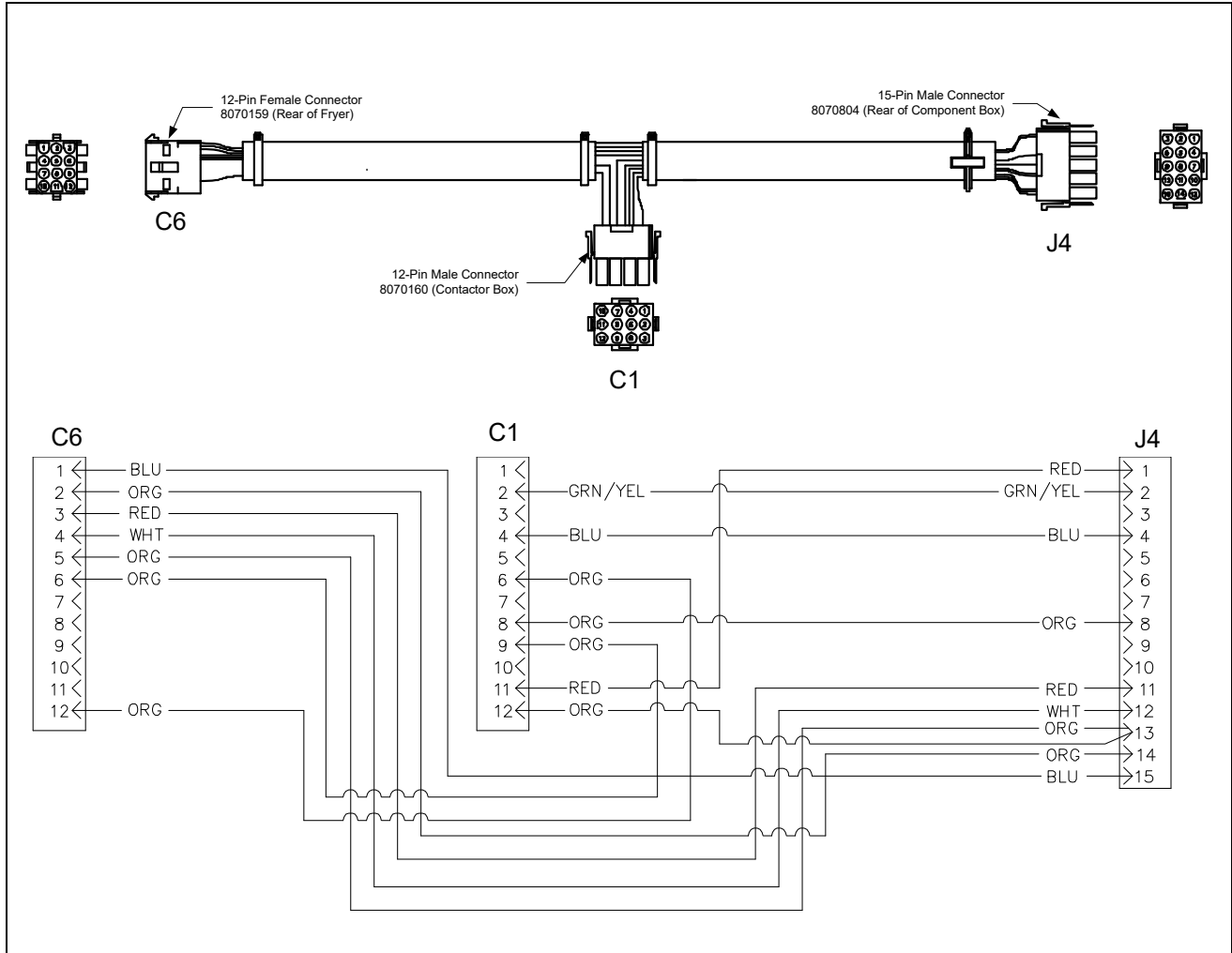
ITEM	PART #	COMPONENT
1	1068744SP	14/17 KW MECHANICAL CONTACTOR

1.5.6.3 Contactor Box Wiring Assembly - 9-Pin (Right Element)



ITEM	PART #	COMPONENT
1	1068745SP	14/17 KW MECHANICAL CONTACTOR

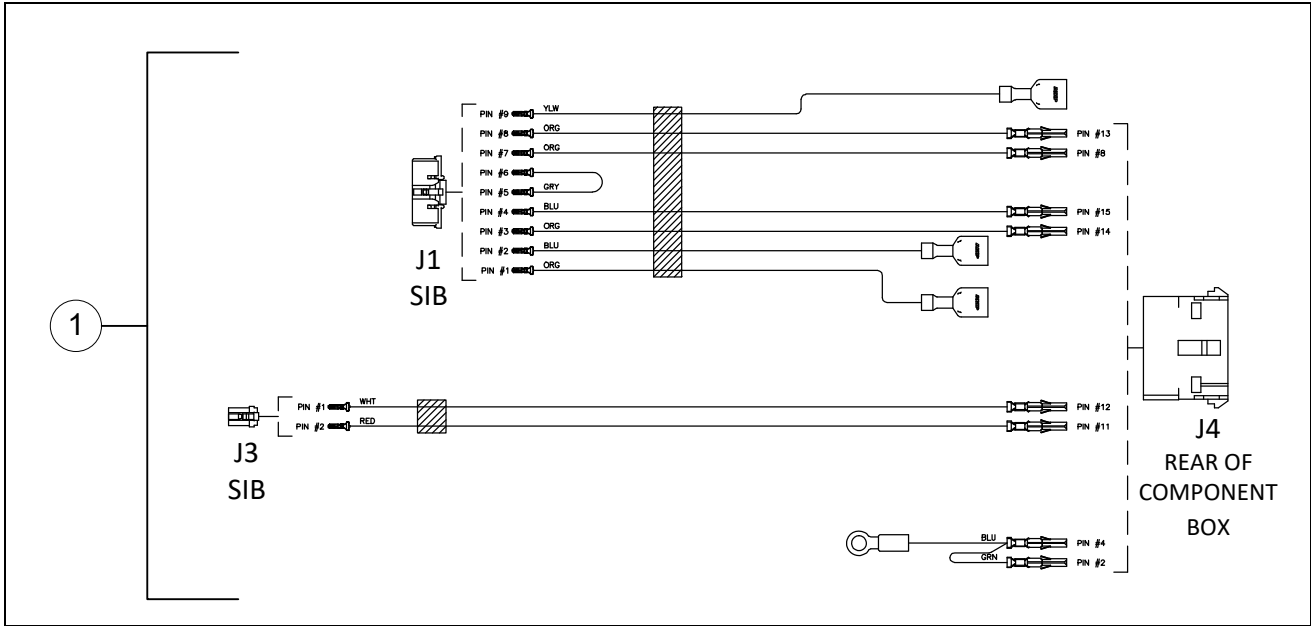
1.5.6.4 Main Wiring Harnesses



ITEM	PART #	COMPONENT
1	8074705	FULL VAT MAIN WIRING HARNESS J4 TO C1 AND C6

See the FQE60U-T wiring diagram on last page.

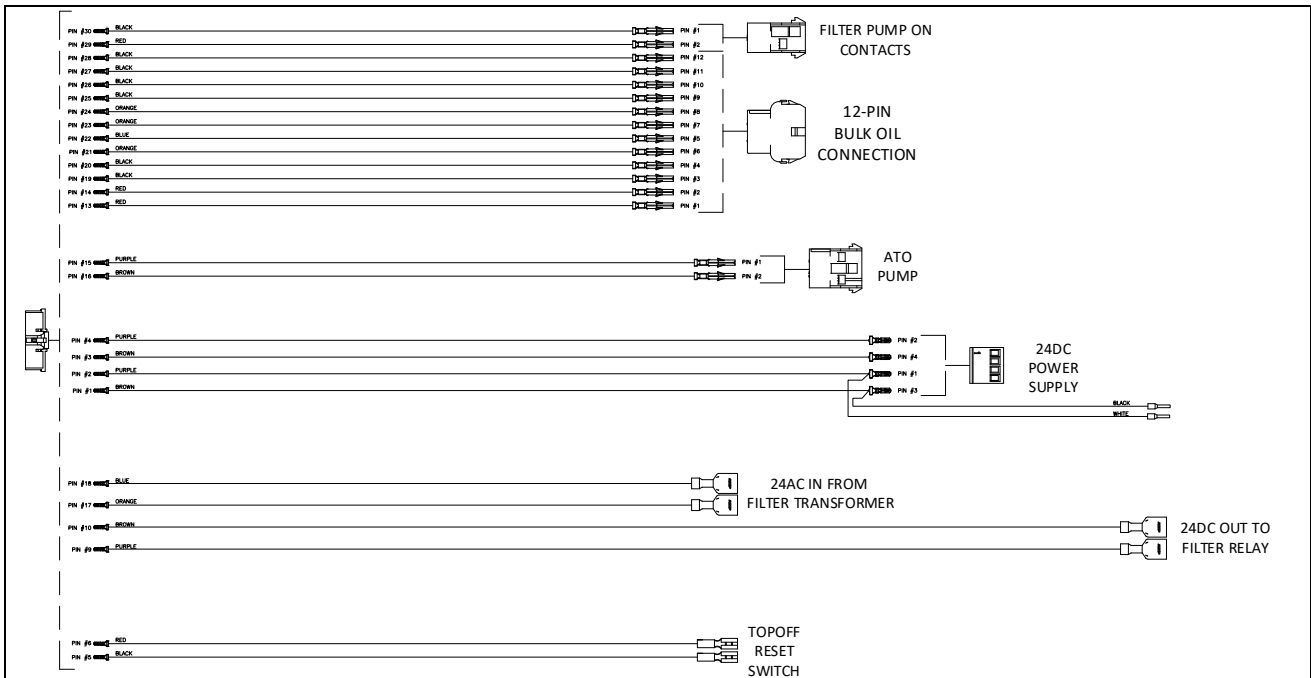
1.5.6.5 Component Box Wiring Harnesses



ITEM	PART #	COMPONENT
1	8075951	FULL VAT CONTROL HARNESS J4 TO J1 AND J3

See the FQE60U-T wiring diagram on last page.

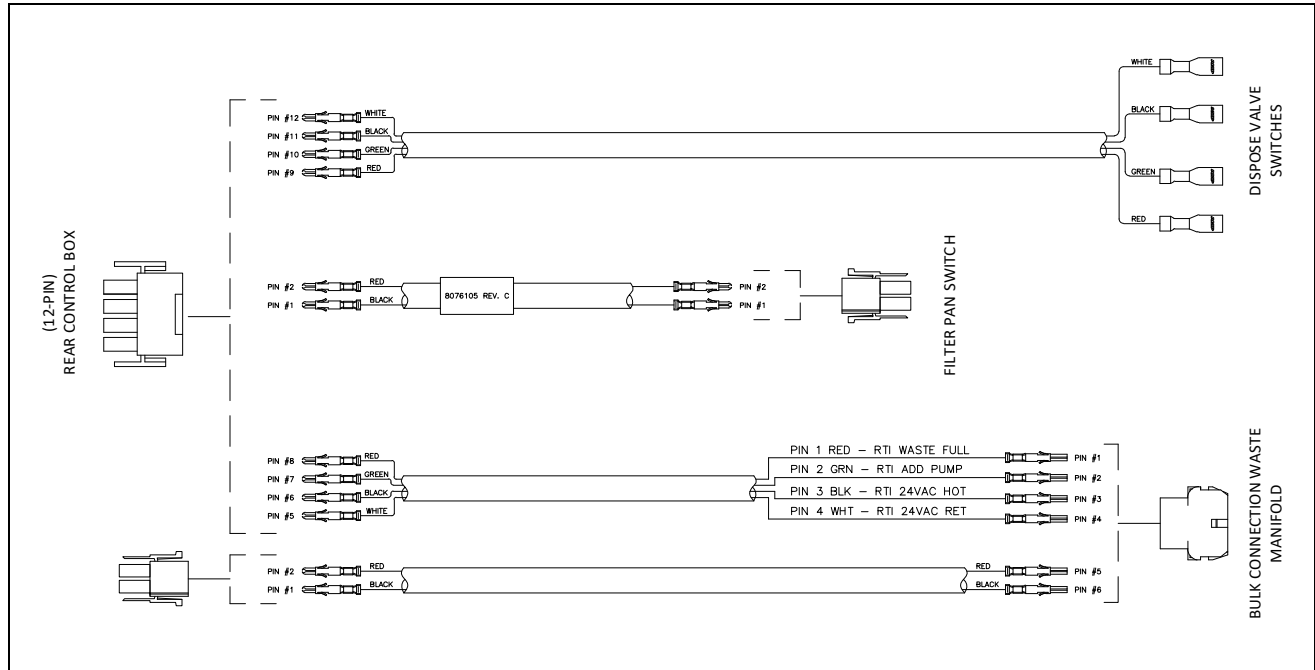
1.5.6.6 FIB (Filter Interface Board) Wiring Harness



ITEM	PART #	COMPONENT
1	8076419	HARNESS, FQE60 FIB/BULK/ATO

See the FQE60U-T wiring diagram on last page.

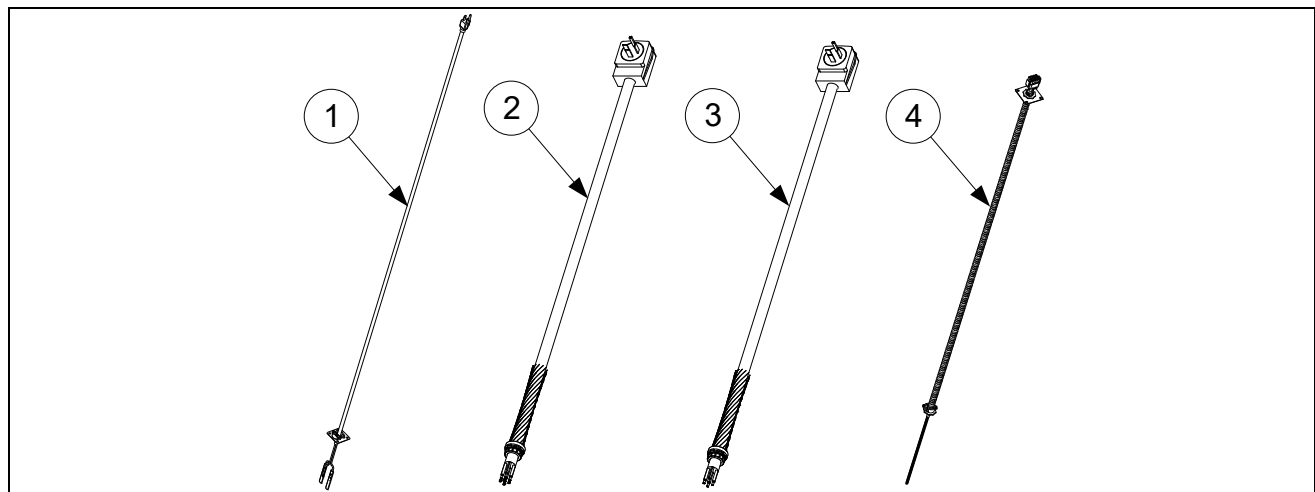
1.5.6.7 Wiring Harness Dispose, Pan Switch, Bulk



ITEM	PART #	COMPONENT
	8076105	HARNESS, DISPOSE/PAN SWITCH/ BULK

See the FQE60U-T wiring diagram on last page.

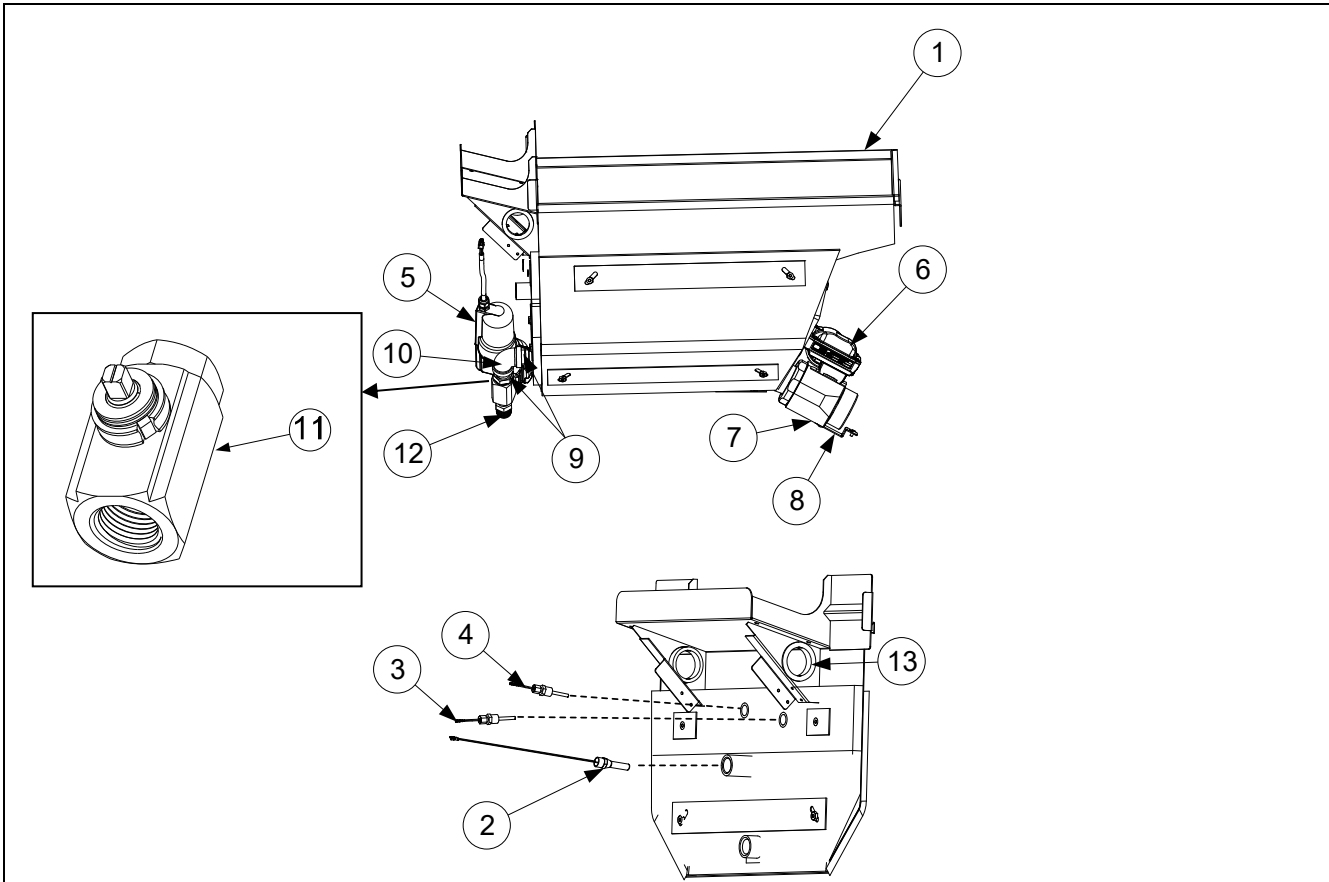
1.5.6.8 Cord Sets and Basket Lift Harness



ITEM	PART #	COMPONENT
1	1066280SP	CORD SET, 120V WITH SPLICE 50"
2	8075625	CORD SET, 3 PHASE, 4 WIRE, 113" 4 GAUGE, PLUG- HUBBELL HBL-8462C WITH RING TERMINALS
3	8074658	CORD SET, 3 PHASE, 4 WIRE, 113" 4 GAUGE, PLUG- HUBBELL HBL-8462C W/O RING TERMINALS
4	1087489SP	HARNESS, BASKETLIFT 60" (12-PIN BASKETLIFT)

1.6 Frypots and Associated Components

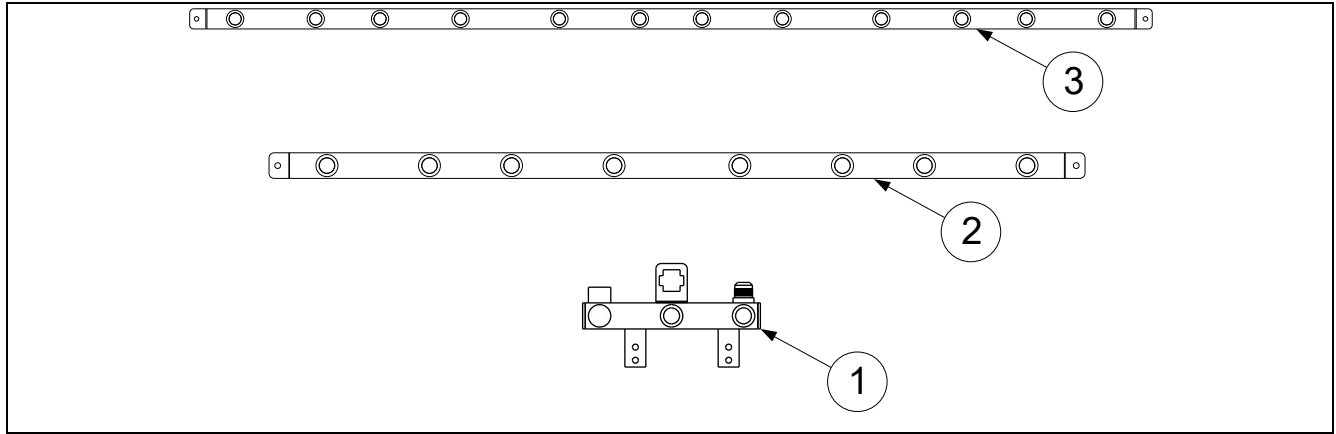
1.6.1 Frypot Components



ITEM	PART #	COMPONENT
1	1087034	FRYPOT, FQ1814
√ 2		THERMOSTAT ASSEMBLY, HIGH-LIMIT LONG STANDARD
	8262454	NON-CE FULL VAT 425°F (218°C) (17KW FV AND 14KW FV) (COLOR CODED BLACK 8067543)
	8262455	CE FULL VAT 415°F (213°C) (14KW AND 17KW CE) (COLOR-CODED YELLOW 8068132)
√ 3	8263287	PROBE, KIT AIF/VIB RTD
√ 4	8263544	PROBE, KIT TOUCH ELEC ATO RTD
√ 5	8075809	ACTUATOR, ROTARY 24VDC (#1) BLUE
√ 6	8075808	ACTUATOR, ROTARY 24VDC (#2) BLACK
√ 7	8263817	VALVE, 1½" DRAIN ROTARY ACTUATOR (DRAIN) KIT (INCLUDES 8160544 O-RING)
*	8160544	O-RING SEAL - DRAIN
8	2401459	STRAP, DRAIN FQ1814E
9	8130022	NIPPLE, ½" X CLOSE NPT BM
10	8130062	ELBOW, ½" BLK 90°
√ 11	8103754	VALVE, ½" NPT ROTARY ACTUATOR (RETURN)
12	8101668	ADAPTOR, MALE ⅝" OD X ½"
13	8070128	BUSHING INSULATING HEYCO
*	8101067	FLEXLINE, ⅝" OD X 8.50" (RETURN)

√ Recommended parts. * Not illustrated

1.7 Oil Return Manifolds

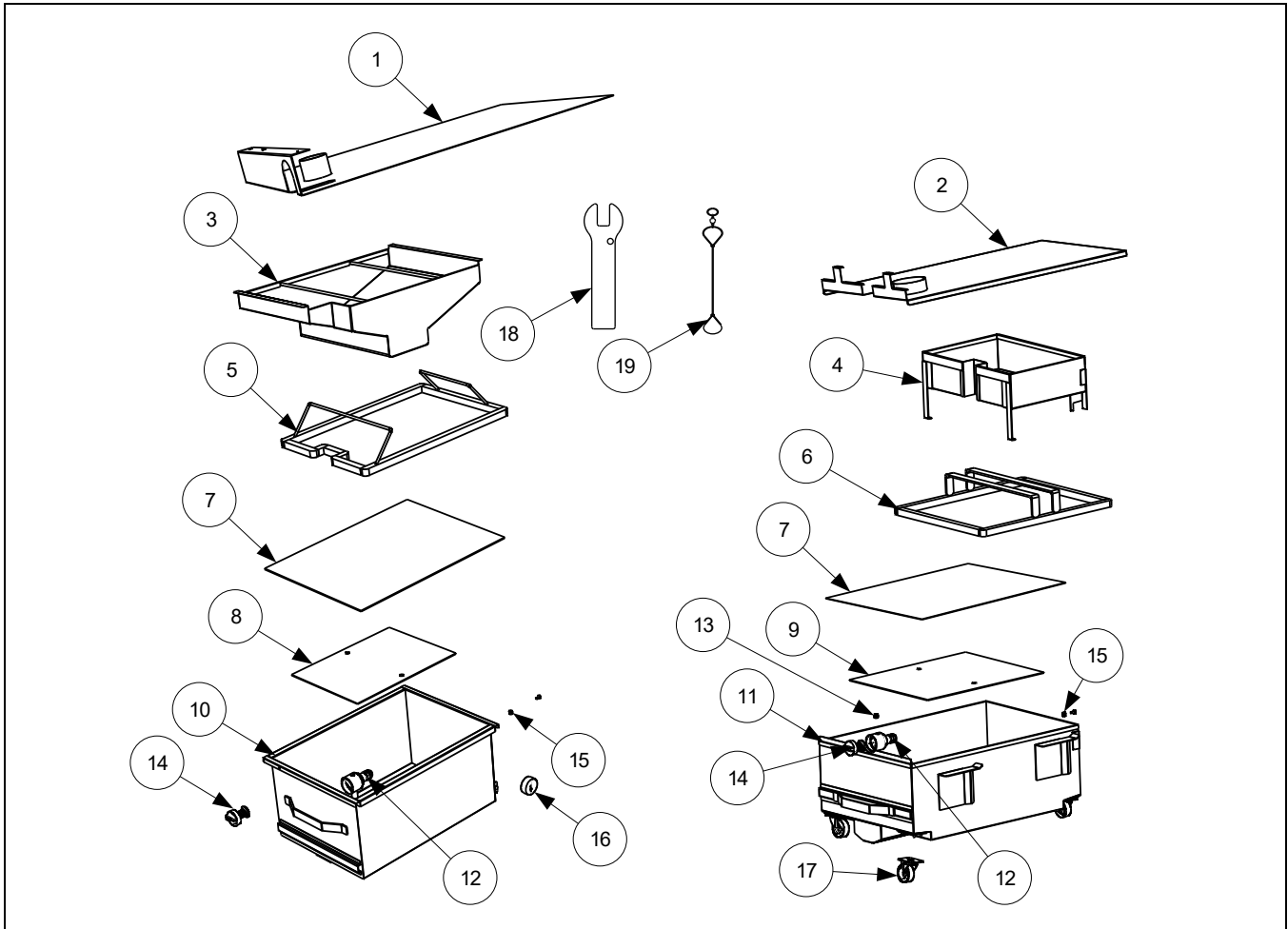


ITEM	PART #	COMPONENT
1	8104882	MANIFOLD (1FQE60T)
2	8104191	MANIFOLD (2FQE60T)
3	8104192	MANIFOLD (3FQE60T)
*	8130907	CAP, 15/16" VALVE
*	1085398	HARNES, BULK OIL UNIVERSAL (PIGTAIL) ATTACHES TO 9-PIN FEMALE ON BULK REAR MANIFOLD

* Not illustrated

1.8 Filtration System Components

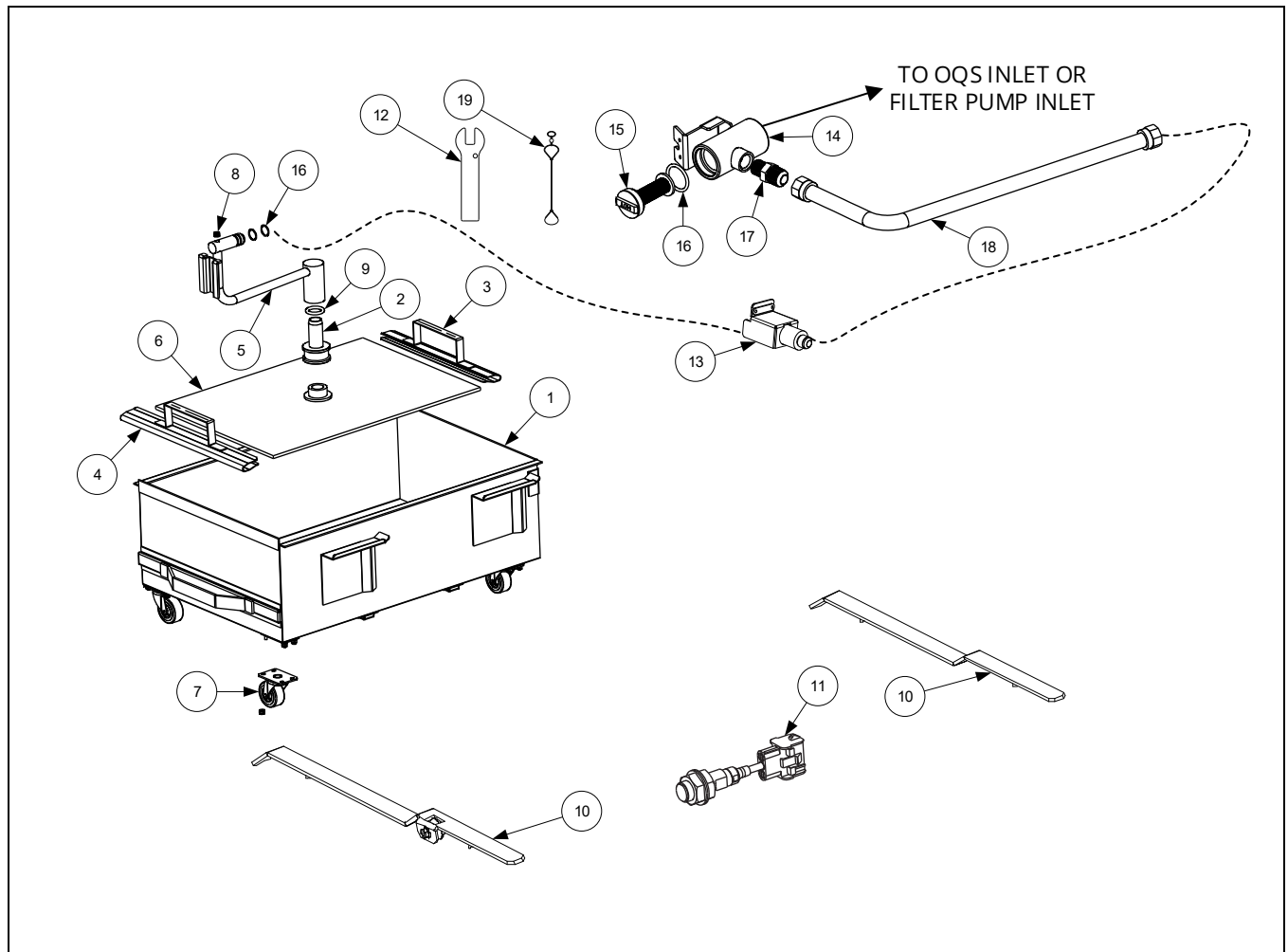
1.8.1 Filter Pan and Accessories



ITEM	PART #	COMPONENT
1	8239607	LID, FILTER PAN (1FQE60T)
2	8239346	LID, FILTER PAN (2FQE60T, 3FQE60T)
3	130001292	CRUMB TRAY (1FQE60T)
4	8237425	CRUMB TRAY (2FQE60T, 3FQE60T)
5	8103414	HOLD-DOWN RING 13.85" X 20.80" (1FQE60T)
6	8103541	HOLD-DOWN RING 15.75" X 19.02" (2FQE60T, 3FQE60T)
7	8030170	PACK, 100-SHEET FILTER PAPER 19.5" X 27.5" (1FQE60T)
	8030289	PACK, 100-SHEET FILTER PAPER 22" X 34" (2FQE60T, 3FQE60T)
8	2204446	SANA GRID FILTER SCREEN(1FQE60T)
9	8122296	SANA GRID FILTER SCREEN (2FQE60T, 3FQE60T)
10	1087029SP	PAN, FILTER ASSEMBLY WITH CASTERS (1FQE60T)
11	1087469SP	PAN, FILTER ASSEMBLY WITH CASTERS (2FQE60T, 3FQE60T)
√ 12	8263288	O-RING (PKG. OF 6; USED WITH ITEMS 10 & 11)
13	8130568	PLUG, 1/8" SOCKET HEAD PIPE (USED WITH ITEMS 10 & 11)
14	8238335	SCREEN, SUCTION LINE FILTER (USED WITH ITEMS 10 & 11)
15	8103007	MAGNET, PULL RING (USED WITH ITEMS 10 & 11)
16	8104941	WHEEL, 2" (USED WITH ITEM 10) (1FQE60T)
17	8102805	CASTER, 2" (USED WITH ITEM 11) (2FQE60T, 3FQE60T)
18	2401086	WRENCH, PRE-FILTER CAP
19	8104167	LANYARD, FILTER SCREEN WRENCH

√ Recommended parts.

1.8.1.1 FQE60 MasterFil Filter Pan and Accessories



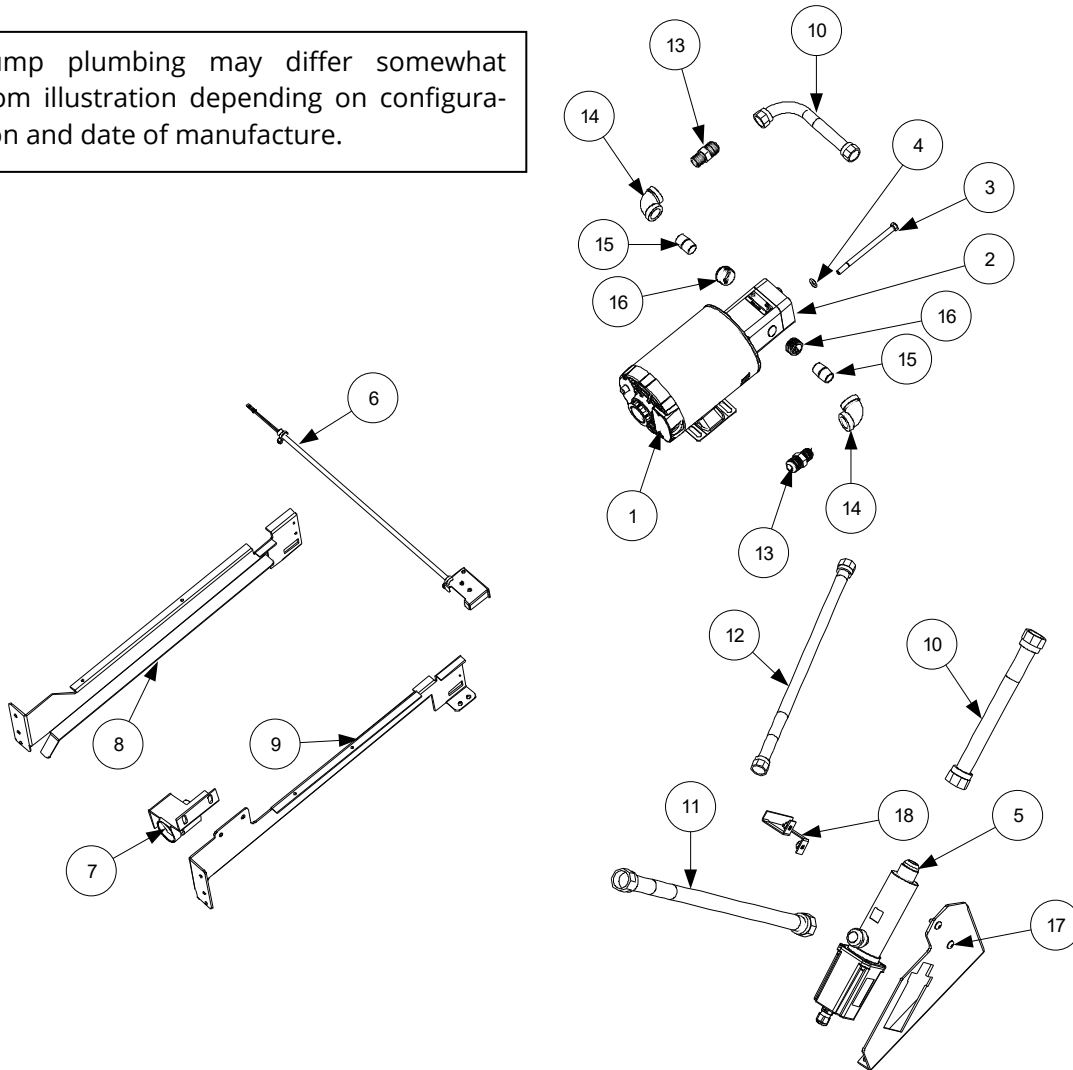
ITEM	PART #	COMPONENT
	130000763	PAN ASSY, FILTER FQG60
1	130000762	PAN W/A, FILTER FQG60
2	130001215	ADAPTER, MASTERFIL SCREEN W/GROOVE
3	130001465	CLIP W/A, MASTERFIL SCREEN 12" SECONDARY
4	130001467	CLIP W/A, MASTERFIL SCREEN 14" PRIMARY
5	130001472	TUBE ASSY, SUCTION FQG60 MASTERFIL
6	130168513	SCREEN, OIL SOLUTIONS GROUP W/HANDLES 13.50 X 19.50
7	8102805	CASTER, 2"
8	8130989	PLUG, 1/8" NPT SOCKET-HEAD .250
9	130000779	O-RING, .210X.975X1.395
10	8233347	SLIDE W/A, FILTER PAN
√ 11	8263857	SENSOR ASS`Y, PAN FQ60 (PROXIMITY SENSOR)
12	2401086	WRENCH, PRE-FILTER CAP
13	130001223	BRACKET W/A, FILTER SUCTION FQ60
14	130001230	BODY W/A, PRE-FILTER FQ60 LONG
√ 15	8239651	SCREEN, SUCTION LINE (<i>USED WITH ITEM 5</i>)
√ 16	8263666	KIT, O-RING FQ120 PAN/PRE-FLTR (INCLUDES 12-8160596[PAN], & 6-8161213[PRE-FLTR])
17	8101668	ADAPTOR, MALE 5/8" O.D. X 1/2"
18	8101068	FLEXLINE, 5/8" OD X 21.50 LONG
19	8104167	LANYARD, FILTER SCREEN WRENCH
*	SEE DESCRIPTION	FILTER ENVELOPES (FE1522X) CONTACT WWW.OILSOLUTIONSGROUP.COM OR CALL 888-459-2112

* Not illustrated.

√ Recommended parts

1.8.2 Filter Pump and Accessories (1FQE60T)

Pump plumbing may differ somewhat from illustration depending on configuration and date of manufacture.



ITEM	PART #	COMPONENT
√ 1		MOTOR AND GASKET KIT
	8261785	100V 50/60 HZ
	8261712	115V 50/60 HZ
	8261756	208V 50/60 HZ
	8261270	220-240V 50/60 HZ
	8261755	250V 50/60 HZ
*	1080028	HARNESS, FILTER PUMP MOTOR POWER
√ 2	8263192	PUMP & GASKET KIT, 8 GPM (INCLUDES 8160093, 8091020 & 8090194)
	8263415	PUMP & GASKET KIT, 8 GPM W/ HEATER HOLE (INCLUDES 8160093, 8091020 & 8090194)
	8160093	GASKET, PUMP/MOTOR
3	8091020	CAP SCREW, 5/16-INCH-18 5.00" NC HEX (CONNECTS PUMP TO MOTOR) (USE 8090194 WASHERS)
4	8090194	WASHERS
*	8071105	HEATER STRIP ASSEMBLY, 100-120V 25W 18"
*	8071098	HEATER STRIP ASSEMBLY, 208-250V 25W 18"
5	8263292	SENSOR, FILTERQUICK OQS REPLACEMENT
6	1087010SP	SENSOR ASSY, MAGNETIC POSITION (1FQE60T)
7	8239201	BRACKET, FILTER SUCTION (1FQE60T)
8	2401449	SUPPORT, FILTER PAN LEFT (FILTER PAN RAIL)

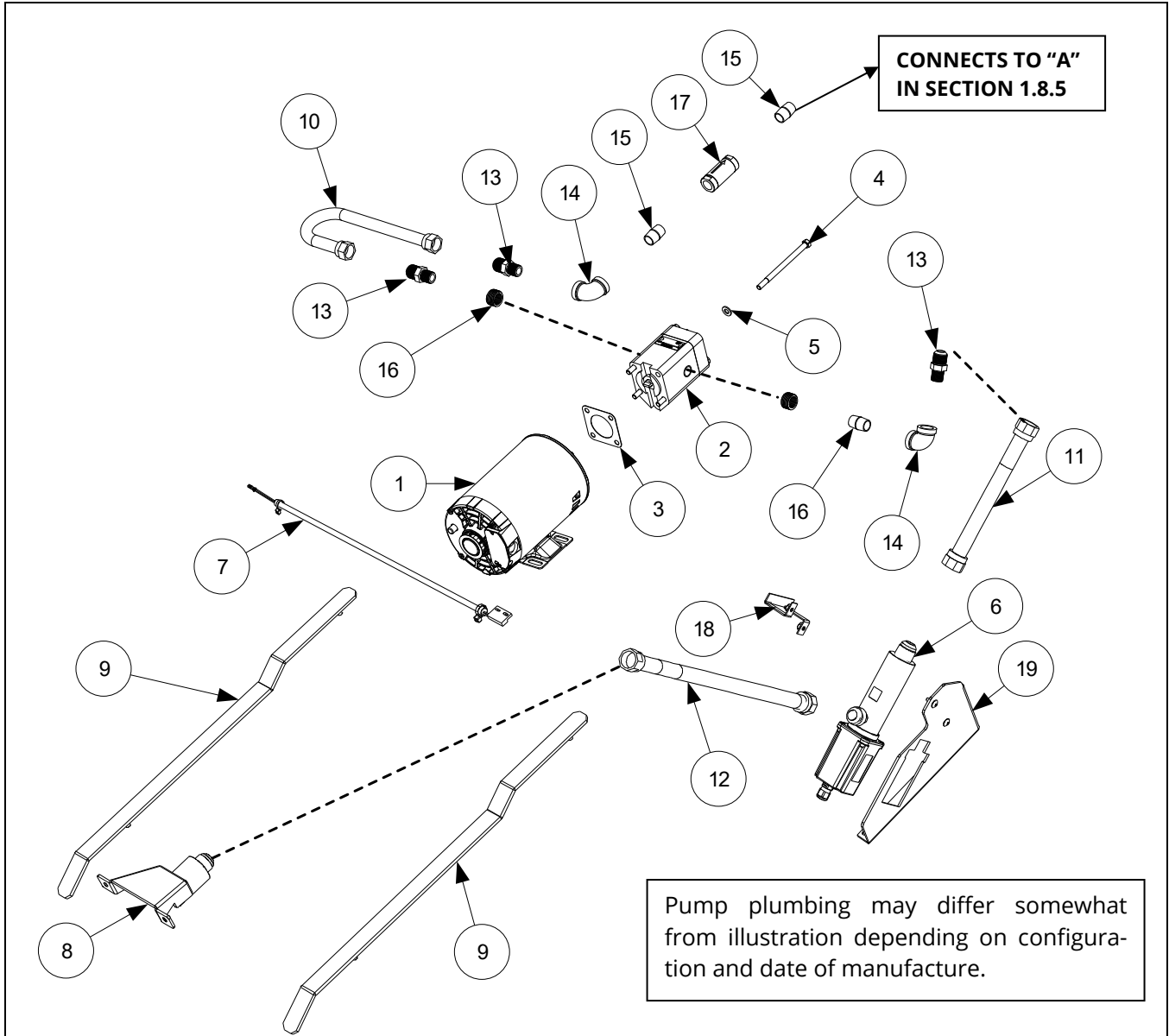
* Not illustrated. √ Recommended parts

1.8.2 Filter Pump and Accessories (1FQE60T) cont.

ITEM	PART #	COMPONENT
9	2401450	SUPPORT, FILTER PAN RIGHT (<i>FILTER PAN RAIL</i>)
10	8101067	FLEXLINE, 5/8" OD X 8.50"
11	8101057	FLEXLINE, 5/8" OD X 13"
12	8101369	FLEXLINE, 5/8" OD X 17.50"
13	8101668	ADAPTER, 5/8" TO 1/2" NPT MALE
14	8130062	ELBOW, 1/2" 90° BM
15	8130022	NIPPLE, 1/2 X CLOSE N.P.T. B.M.
16	8130763	BUSHING, 3/4OD X 1/2ID NPT FLUSH
17	2401456	MOUNT, OQS
18	2401385	RETAINER, OQS SENSOR FQ

* Not illustrated. ✓ Recommended parts.

1.8.3 Filter Pump and Accessories (2FQE60T, 3FQE60T)



ITEM	PART #	COMPONENT
√ 1		MOTOR AND GASKET KIT
	8261785	100V 50/60 HZ
	8261712	115V 50/60 HZ
	8261756	208V 50/60 HZ
	8261270	220-240V 50/60 HZ
	8261755	250V 50/60 HZ
*	1088602	HARNES, FILTER PUMP 2/3 FQE60WIRES
√ 2	8263192	PUMP & GASKET KIT, 8 GPM (INCLUDES 8160093, 8091020 & 8090194)
3	8160093	GASKET, PUMP/MOTOR
4	8091020	CAP SCREW, 5/16-INCH-18 5.00" NC HEX (CONNECTS PUMP TO MOTOR) (USE 8090194 WASHERS)
5	8090194	WASHERS
*	8071098	HEATER STRIP ASSEMBLY, 208-250V 25W 18"
6	8263292	SENSOR, FILTERQUICK OQS REPLACEMENT
7	10658765P	SENSOR ASSY, MAGNETIC POSITION (2FQE60T, 3FQE60T)
8	8239338	BRACKET, FILTER SUCTION (2FQE60T, 3FQE60T)

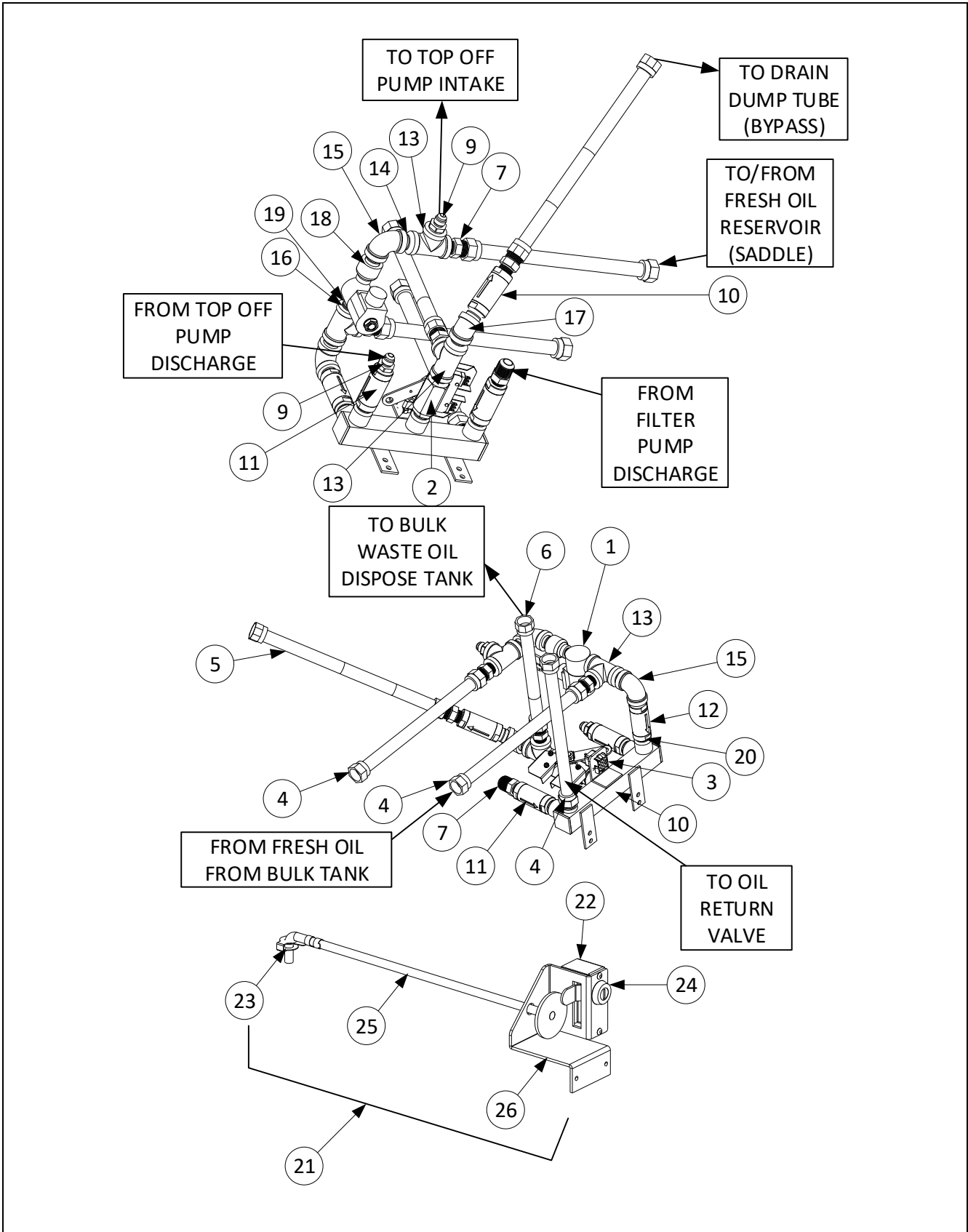
* Not illustrated. √ Recommended parts

1.8.3 Filter Pump and Accessories (2FQE60T, 3FQE60T) cont.

ITEM	PART #	COMPONENT
9	8233347	FRAME W/A, SLIDE BASE (<i>FILTER PAN RAIL</i>) (2FQE60T, 3FQE60T)
10	8101055	FLEX LINE 5/8" OD X 11.50"
11	8102532	FLEXLINE, 5/8" OD X 7.00"
12	8101400	FLEXLINE, 5/8" OD X 21.00"
13	8101668	ADAPTER, 5/8" TO 1/2" NPT MALE
14	8130062	ELBOW, 1/2" 90° BM
15	8130022	NIPPLE, 1/2 X CLOSE N.P.T. B.M.
16	8130763	BUSHING, 3/4OD X 1/2ID NPT FLUSH
17	8105100	VALVE, 1 PSI CHECK VALVE 1/2" NPT
18	2401385	RETAINER, OQS SENSOR FQ
19	2401456	MOUNT, OQS

* Not illustrated. ✓ Recommended parts.

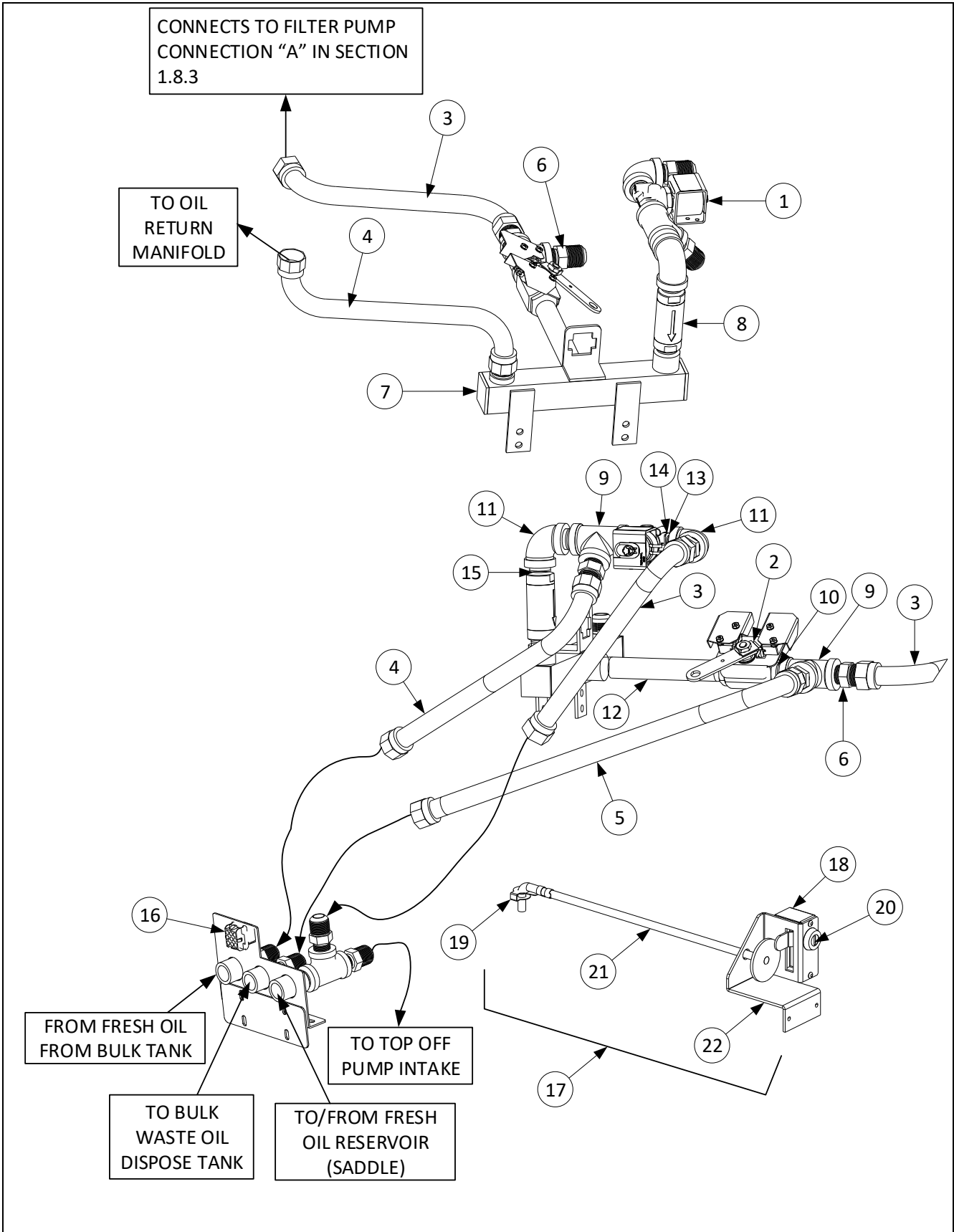
1.8.4 Plumbing Bulk/Return (1FQE60T)



1.8.4 Plumbing Bulk/Return (1FQE60T) cont.

ITEM	PART #	COMPONENT
1	1066830	SOLENOID
2	1080446	VALVE, BULK WASTE ASSEMBLY (SEE SECTION 1.10.1 FOR PARTS)
3	8076105	HARNESS, DISPOSE/PAN SW/BULK
*	1085398SP	BULK OIL HARNESS PIGTAIL
4	8101055	FLEX LINE 5/8" OD X 11.50"
5	8101057	FLEXLINE, 5/8" OD X 13"
6	8101067	FLEXLINE, 5/8" OD X 8.50"
7	8101668	ADAPTOR, MALE 5/8" OD X 1/2"
8	8104882	MANIFOLD, BULK/RETURN
9	8105019	FITTING, 3/8 FLARE X 1/2 NPT
10	8105084	VALVE, 20 PSI CHECK STRATAFLO
11	8105100	VALVE, 1 PSI CHECK STRATAFLO
12	8105101	VALVE, 4 PSI CHECK STRATAFLO
13	8130003	TEE, 1/2" X 1/2" X 1/2" BM
14	8130022	NIPPLE, 1/2" X CLOSE NPT BM
15	8130062	ELBOW, 1/2" BM 90°
16	8130304	BUSHING, 1/2 X 1/4 BM FLUSH
17	8130345	ELBOW, 1/2" 45° BM
18	8130555	REDUCER, BELL 1/2 TO 1/4 NPT BM
19	8130838	NIPPLE, 1/4" NPT BM CLOSE
20	8130900	NIPPLE, 1/2 X CLOSE NPT S/S
21	1087038SP	HANDLE BULK DISPOSE
22	2208664	COVER, HANDLE
23	8090601	CLIP, CLEVIS LEFT ROD END
24	8103587	LOCK, BULK WASTE HANDLE (INCLUDES KEYS)
25	8239336	HANDLE, BULK WASTE PULL
26	2401651	MOUNT, RTI HANDLE

1.8.5 Plumbing Bulk/Return (2FQE60T, 3FQE60T)

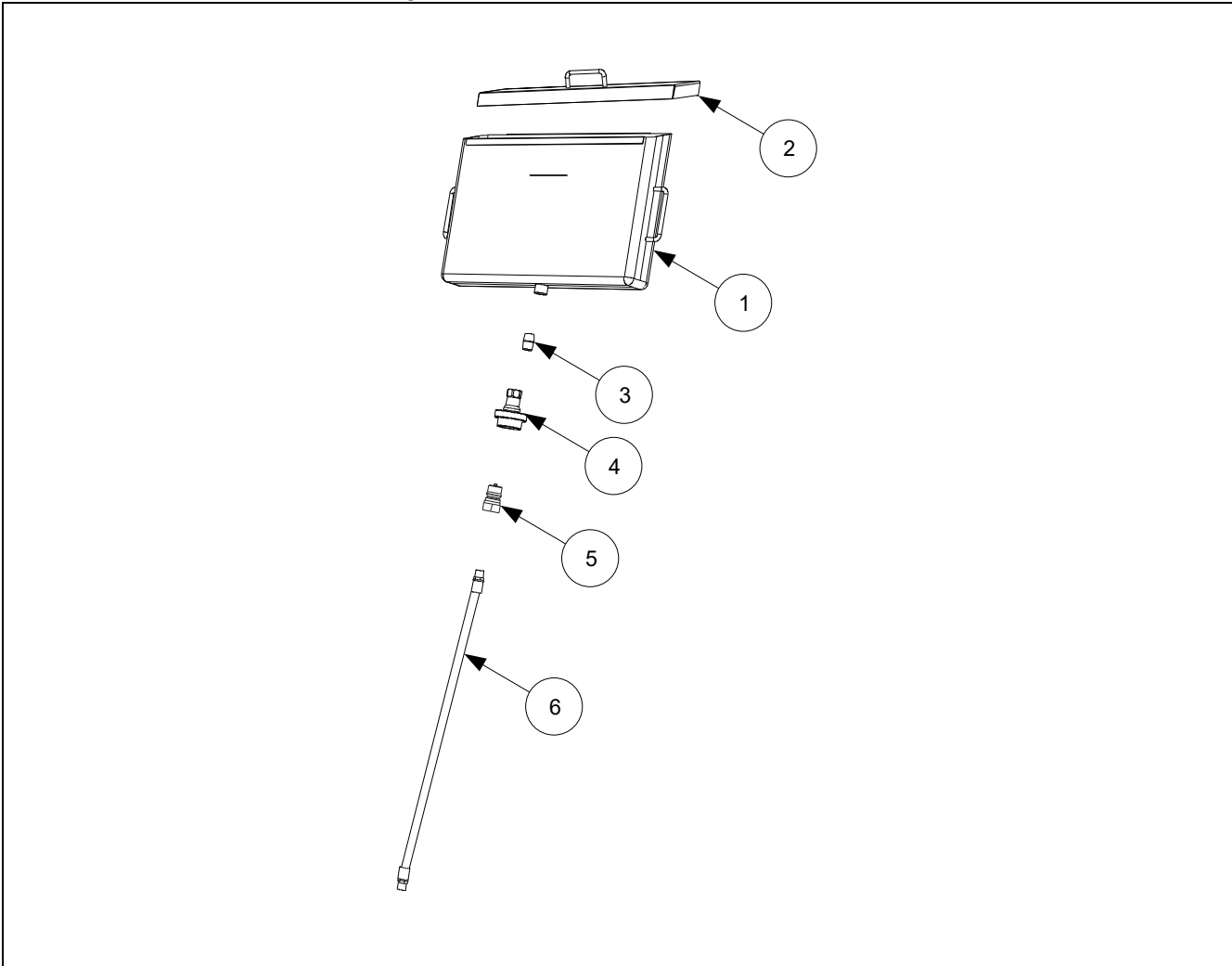


1.8.5 Plumbing Bulk/Return (2FQE60T, 3FQE60T) cont.

ITEM	PART #	COMPONENT
1	1066830	SOLENOID
2	1080446	VALVE, BULK WASTE ASSEMBLY (SEE SECTION 1.10.1 FOR PARTS)
3	8101055	FLEX LINE 5/8" OD X 11.50"
4	8101057	FLEXLINE, 5/8" OD X 13"
5	8101369	FLEX LINE 5/8" OD X 17.50"
6	8101668	ADAPTOR, MALE 5/8" OD X 1/2"
7	8104881	MANIFOLD, FILTER QUICK ELECTRIC BULK OIL
8	8105101	VALVE, 4 PSI CHECK STRATAFLO
9	8130003	TEE, 1/2" X 1/2" X 1/2" BM
10	8130022	NIPPLE, 1/2" X CLOSE NPT BM
11	8130062	ELBOW, 1/2" BM 90°
12	8130096	NIPPLE, 1/2X6.0 NPT BM
13	8130304	BUSHING, 1/2 X 1/4 BM FLUSH
14	8130838	NIPPLE, 1/4" NPT BM CLOSE
15	8130900	NIPPLE, 1/2 X CLOSE NPT S/S
16	8076105	HARNES, DISPOSE/PAN SW/BULK
*	1085398SP	BULK OIL HARNES PIGTAIL
17	1087455SP	HANDLE BULK DISPOSE
18	2208664	COVER, HANDLE
19	8090657	CLIP, CLEVIS RIGHT ROD END
20	8103587	LOCK, BULK WASTE HANDLE (INCLUDES KEYS)
21	8239336	HANDLE, BULK WASTE PULL
22	2401651	MOUNT, RTI HANDLE

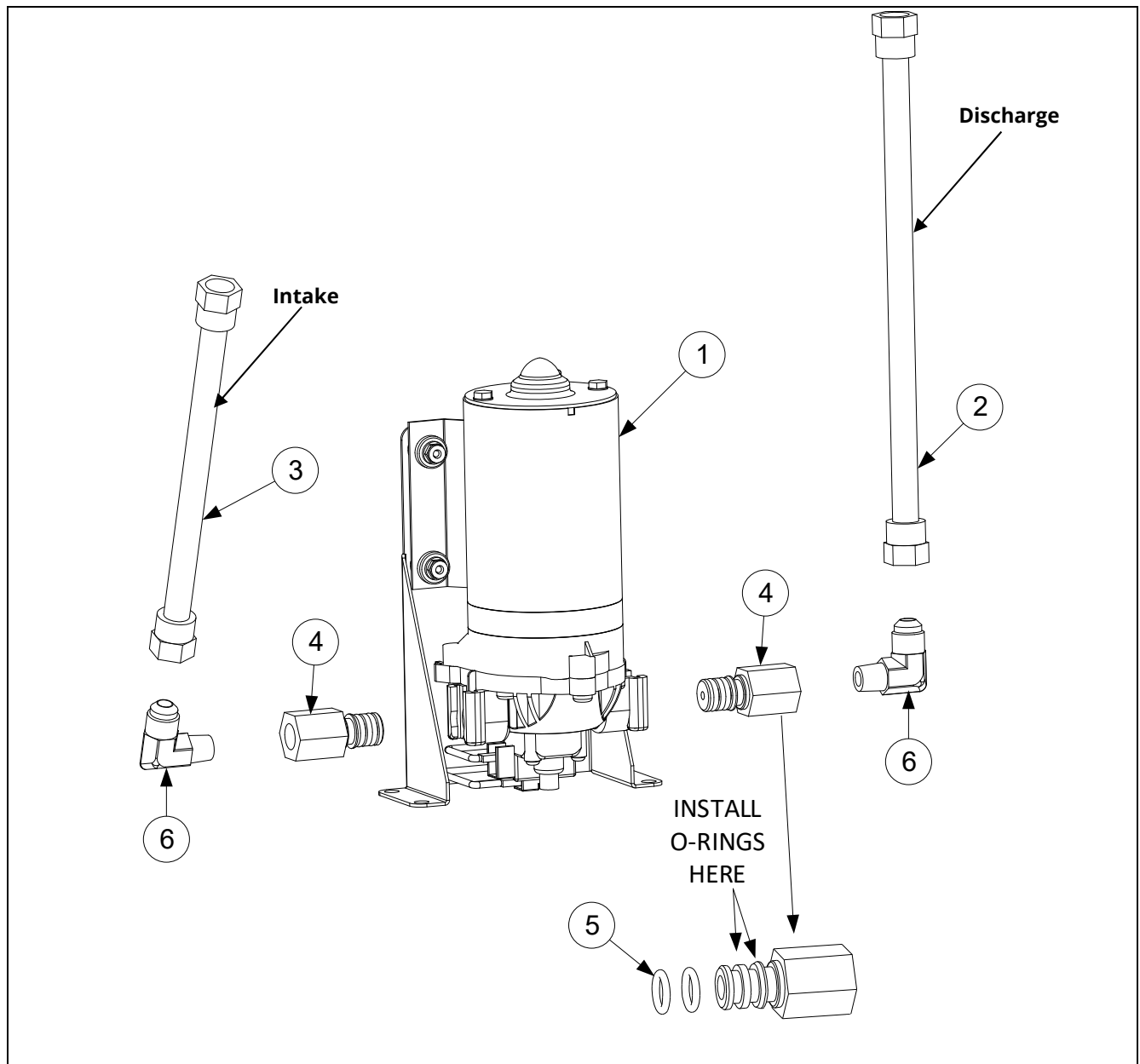
1.9 ATO (Auto Top-Off) Components

1.9.1 Side Saddle Assembly



ITEM	PART #	COMPONENT
1	8239596	TANK, OIL SADDLE
2	8239430	LID
3	8130022	NIPPLE, ½" X CLOSE N.P.T. B.M.
4	8100490	QUICK DISCONNECT, ½" FEMALE
5	8100487	QUICK DISCONNECT, ½" MALE
6	8103823	HOSE, JIB/BIB

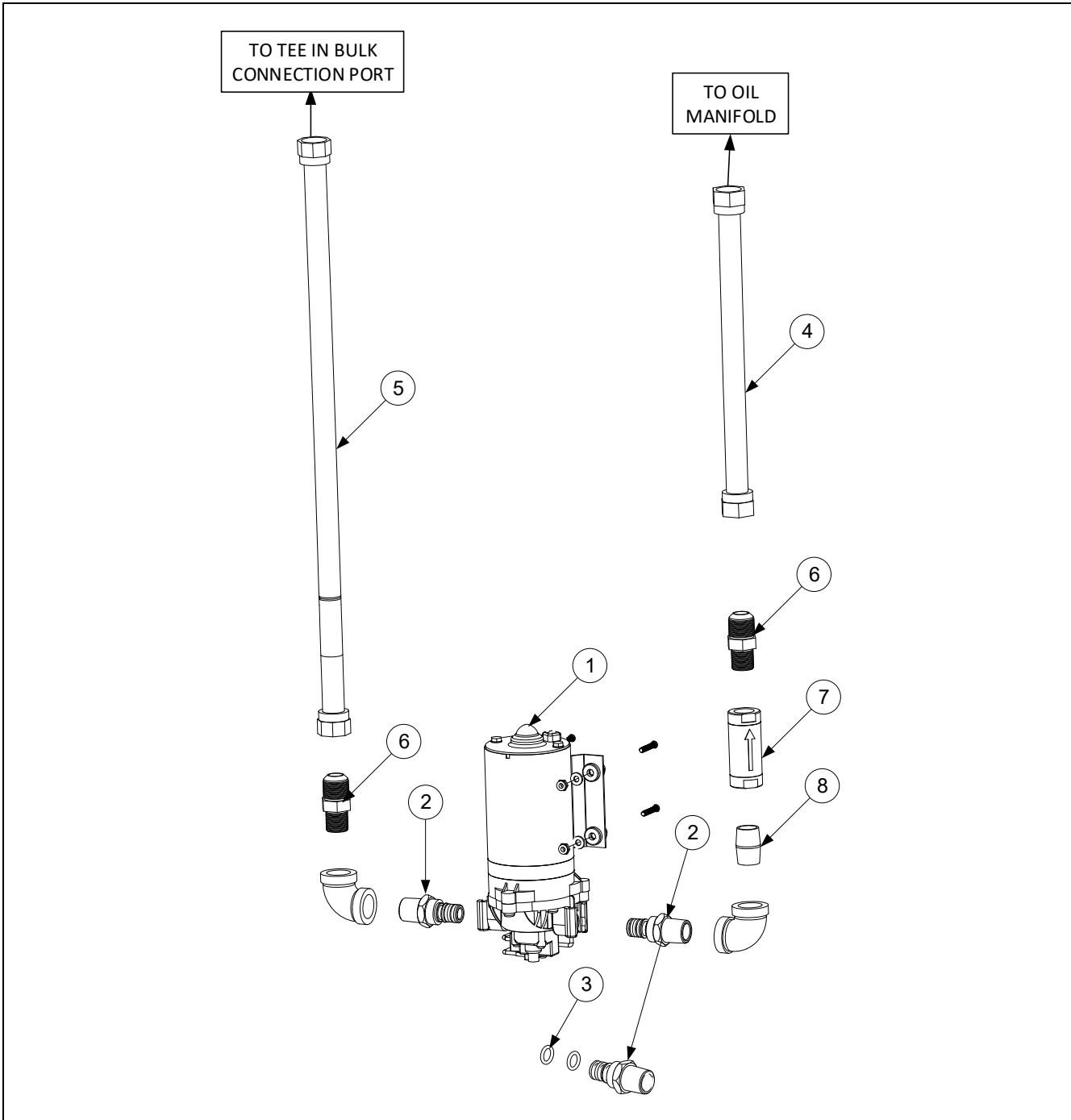
1.9.2 ATO (Auto Top Off) Pump Assembly (1FQE60T)



ITEM	PART #	COMPONENT
√ 1	1084372	PUMP, SHURFLO 24VAC (USE 1087890 FOR CE)
2	8104464	FLEXLINE, 1/2" OD X 10" (DISCHARGE TO BULK PLUMBING MANIFOLD)
3	8103591	FLEXLINE, 1/2" OD X 8" (INTAKE)
4	1083032	FITTING, SHURFLO PUMP WITH MALE END (INCLUDES O-RINGS)
5	8160782	O-RING, VITON #111
6	8130940	ELBOW, 1/4" NPT X 3/8" FLARE

√ Recommended parts.

1.9.3 ATO (Auto Top Off) Pump Assembly (2FQE60T, 3FQE60T)

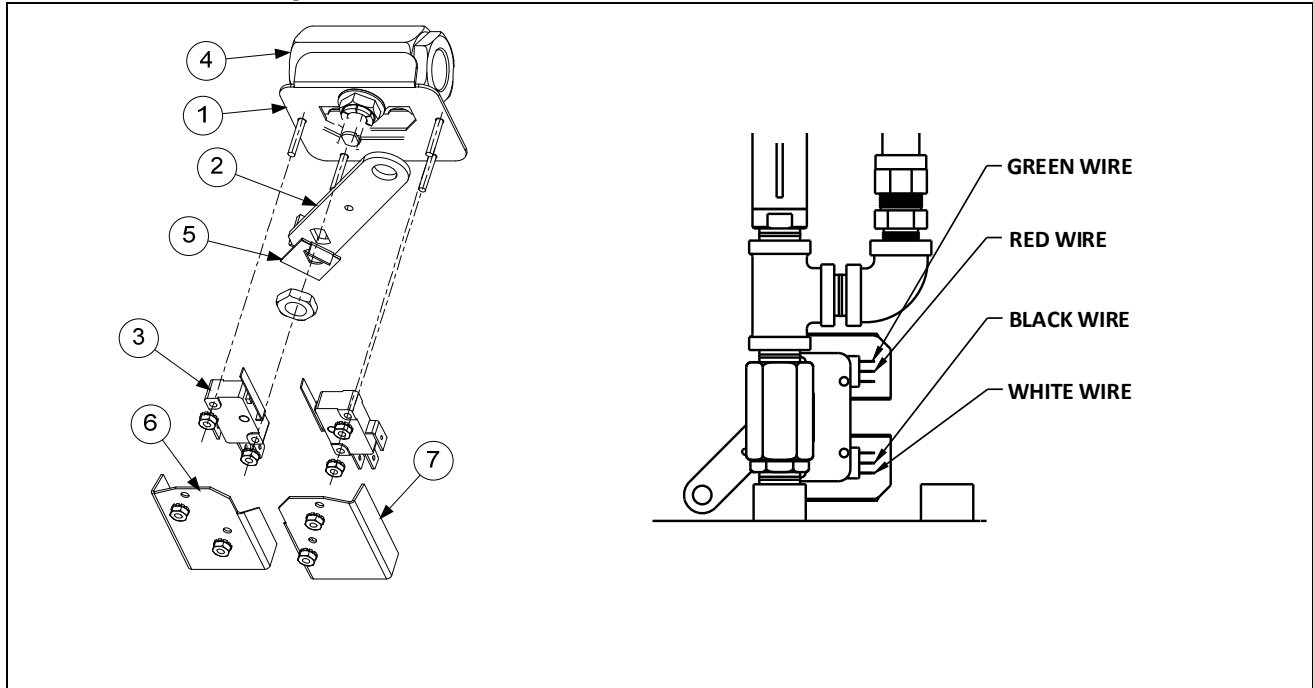


ITEM	PART #	COMPONENT
√ 1	1084372	PUMP, SHURFLO 24VAC (USE 1087890 FOR CE)
2	1082054SP	FITTING, SHURFLO PUMP WITH MALE END (INCLUDES O-RINGS)
3	8160782	O-RING, VITON #111
4	8101055	FLEXLINE, 5/8" OD X 11.50"
5	8101400	FLEXLINE, 5/8" OD X 21.00"
6	8101668	ADAPTOR, MALE 5/8" OD X 1/2"
7	8105100	VALVE, 1-PSI CHECK STRATAFLO
8	8130900	NIPPLE, 1/2" X CLOSE NPT S/S
9	8130062	ELBOW, 1/2" 90° BM

√ Recommended parts.

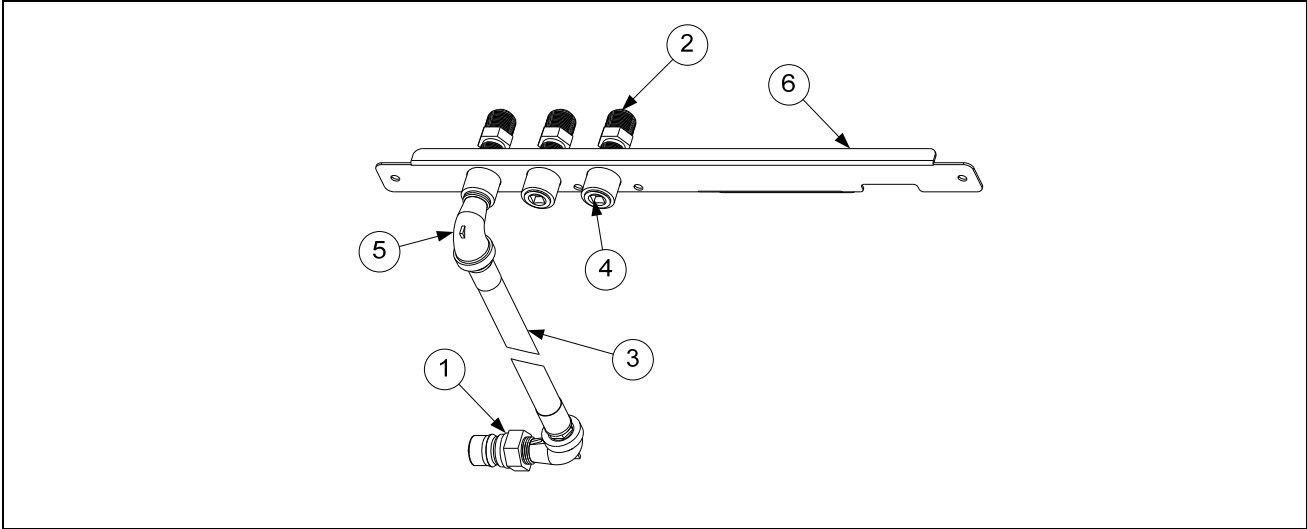
1.10 Bulk Oil System Components

1.10.1 Bulk Oil Dispose Waste Valve



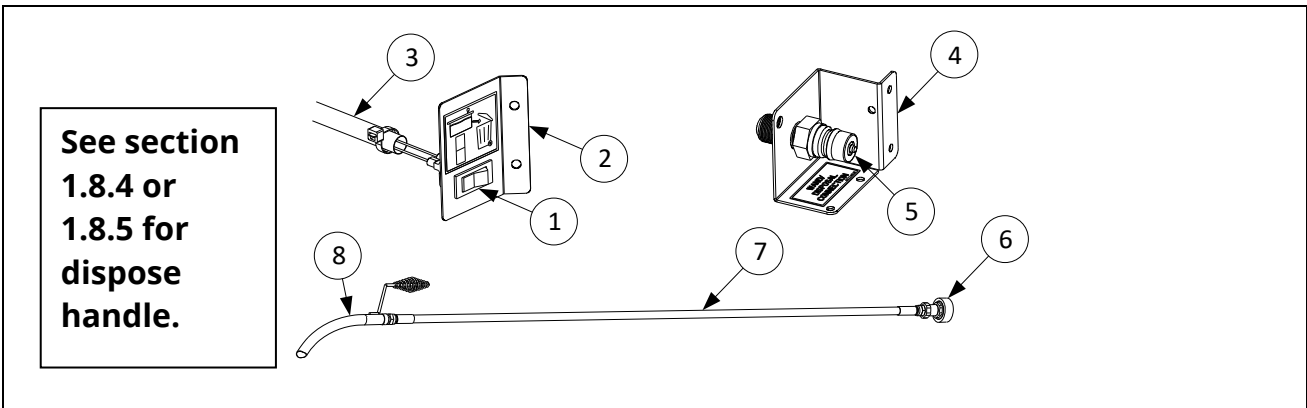
ITEM	PART #	COMPONENT
	1080446SP	VALVE, DISPOSE WASTE
1	1080445	BRACKET, RTI WASTE VALVE
2	2205615	HANDLE, RTI WASTE VALVE
3	8074936	MICROSWITCH, GOLD SEALED
4	8100278	VALVE, ½" BALL
5	9002935	RETAINER, NUT RETURN VALVE
6	9012348	COVER, DV SAFETY SWITCH
7	9022348	COVER, DV SAFETY SWITCH

1.10.2 Bulk Connection - Rear (1FQE60T)



ITEM	PART #	COMPONENT
1	8100487	COUPLING, MALE QUICK DISCONNECT
2	8101668	ADAPTER, 3/8" TO 1/2" NPT MALE
3	8103823	HOSE (CONNECTS TO OIL SADDLE)
4	8130463	PLUG, PIPE 1/2" NPT BM
5	8130616	ELBOW, STREET 1/2" X 1/2" NPT 90°
6	8239204	MOUNT, FQ1814E OIL CONNECTION

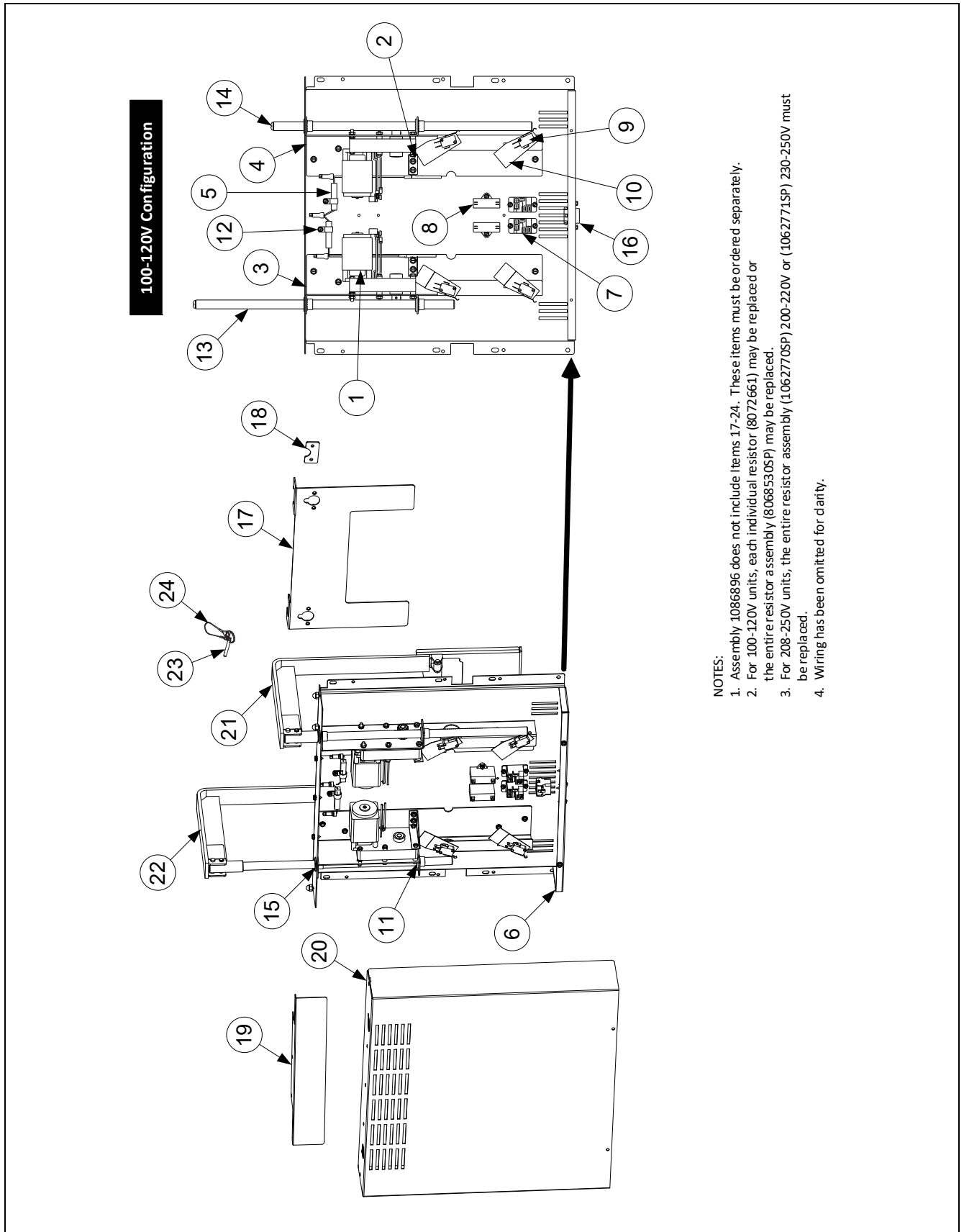
1.10.3 Bulk Connection - Front



ITEM	PART #	COMPONENT
	1088919	SWITCH, FRONT DISPOSAL
1	8072659	SWITCH, ROCKER
	2602579	BRACKET, MOMENTARY SWITCH
2	1086024	HARNES ASSY, FQ GAS FRONT DISPOSAL SWITCH
	1088921	PLUMBING, FRONT DISPOSAL
3	8239615	BRACKET, FRONT OIL DISPOSE
4	8100487	COUPLING, MALE QUICK DISCONNECT
5	8068867	WAND ASSEMBLY, OIL DISCARD
6	8100490	QUICK DISCONNECT 1/2" FEMALE
7	8101434	HOSE ASSY, PF STANDARD
8	8100603	WAND

1.11 Basket Lift Assembly and Associated Parts

1.11.1 Basket Lift Assembly and Associated Parts - Prior to June 2019



100-120V Configuration

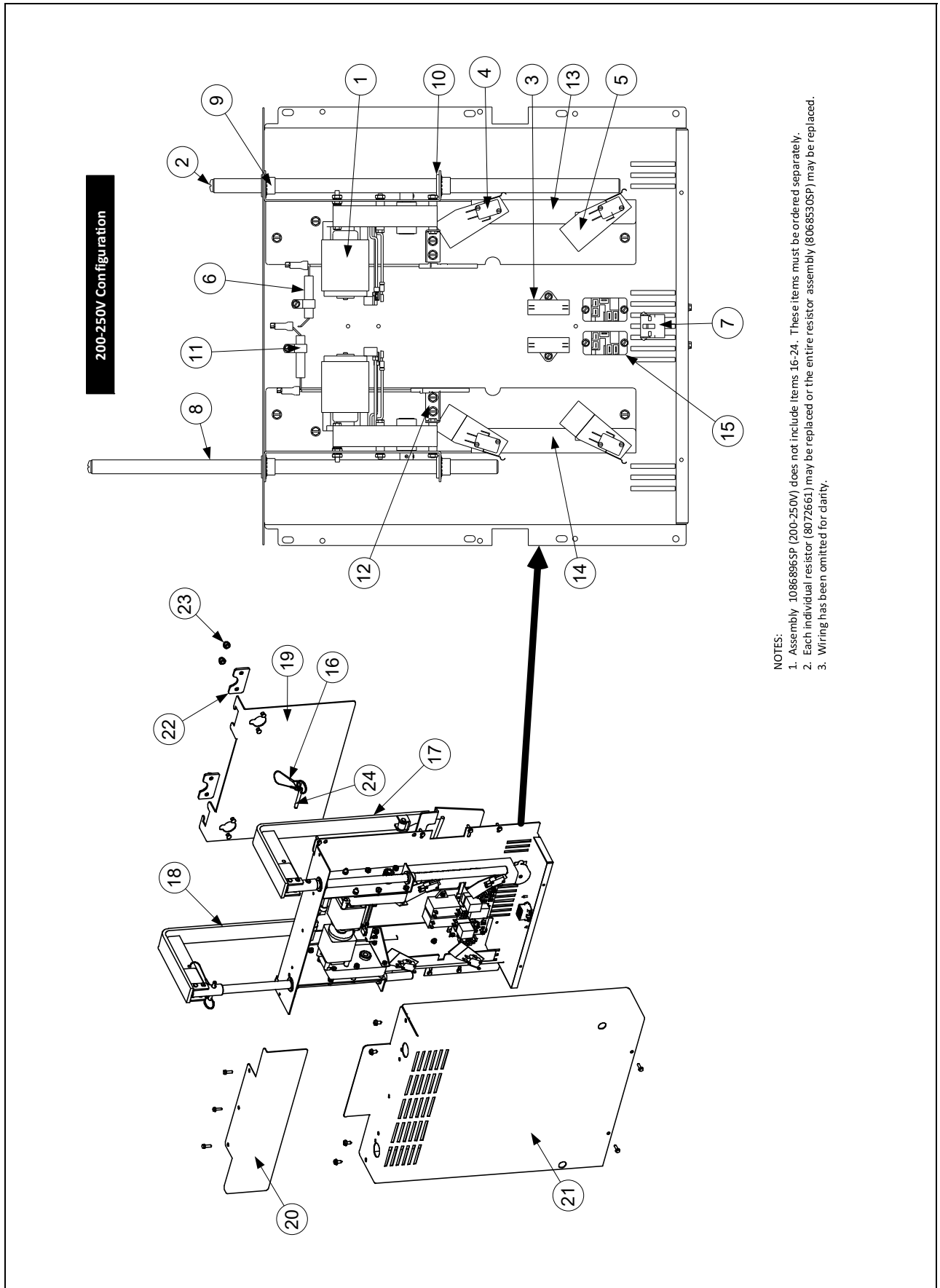
- NOTES:**
1. Assembly 1086896 does not include items 17-24. These items must be ordered separately.
 2. For 100-120V units, each individual resistor (8072661) may be replaced or the entire resistor assembly (8068505P) may be replaced.
 3. For 208-250V units, the entire resistor assembly (10627705P) 200-220V or (10627715P) 230-250V must be replaced.
 4. Wiring has been omitted for clarity.

1.11.1 Basket Lift Assy and Associated Parts - Prior to June 2019

ITEM	PART #	COMPONENT
		BASKET LIFT ASSEMBLIES (SEE NOTE 1 IN ILLUSTRATION)
	1086896SP	BASKET LIFT ASSY, 208-250VAC (ITEMS 1-16) SHOWN
1	1085031SP	MOTOR ASSY, 208-250VAC MODULAR BASKET LIFT
2	2209678	GUSSET, BASKET LIFT MOTOR
3	2219624	CHASSIS, LEFT BASKET LIFT
4	2229624	CHASSIS, RIGHT BASKET LIFT
5		RESISTOR ASSY
	8068530SP	100-120V MODULAR BASKET LIFT (SEE NOTE 2 IN ILLUSTRATION)
	1062770SP	208-220VAC MODULAR BASKET LIFT (SEE NOTE 3 IN ILLUSTRATION)
	1062771SP	230-250VAC MODULAR BASKET LIFT (SEE NOTE 3 IN ILLUSTRATION)
6	8242391	MOUNT WMNT, 1814E MODULAR B/LIFT
7	8071683	RELAY, 12VDC
8	8076253	CAPACITOR, MOTOR RUN 4.0 MFD 440 VAC
9	8072572	MICROSWITCH
10	8120442	INSULATION, MICROSWITCH
11	8090082	RING, BUSHING RETAINER
12	8090810	CLAMP, NYLON
13	8101012	ROD, MODULAR BASKET LIFT
14	8090129	SCREW, 1/4-20 X 5/8 SLOTTED ROUND HEAD
15	8130035	BUSHING, BRONZE
16	8070159	CONNECTOR, 12-PIN PLUG
*	WIR0166	WIRE ASSY, BASKET LIFT W/ RELAY 200-250VAC
17	1086925	GUIDE, 1814E B/L ARM
18	2601474	COVER, BSKT HNGR RIVET B/L
19	2401693	SHIELD, REAR MODULAR BASKET LIFT COVER
20	2401708	COVER, 1814E MODULAR BASKET LIFT
21	8239158	ARM, LEFT MODULAR BASKET LIFT
22	8239159	ARM, RIGHT MODULAR BASKET LIFT
23	8104852	PIN, 1/4" X 1-5/16" QUICK RELEASE
24	8104854	LANYARD, W/RING

* Not illustrated.

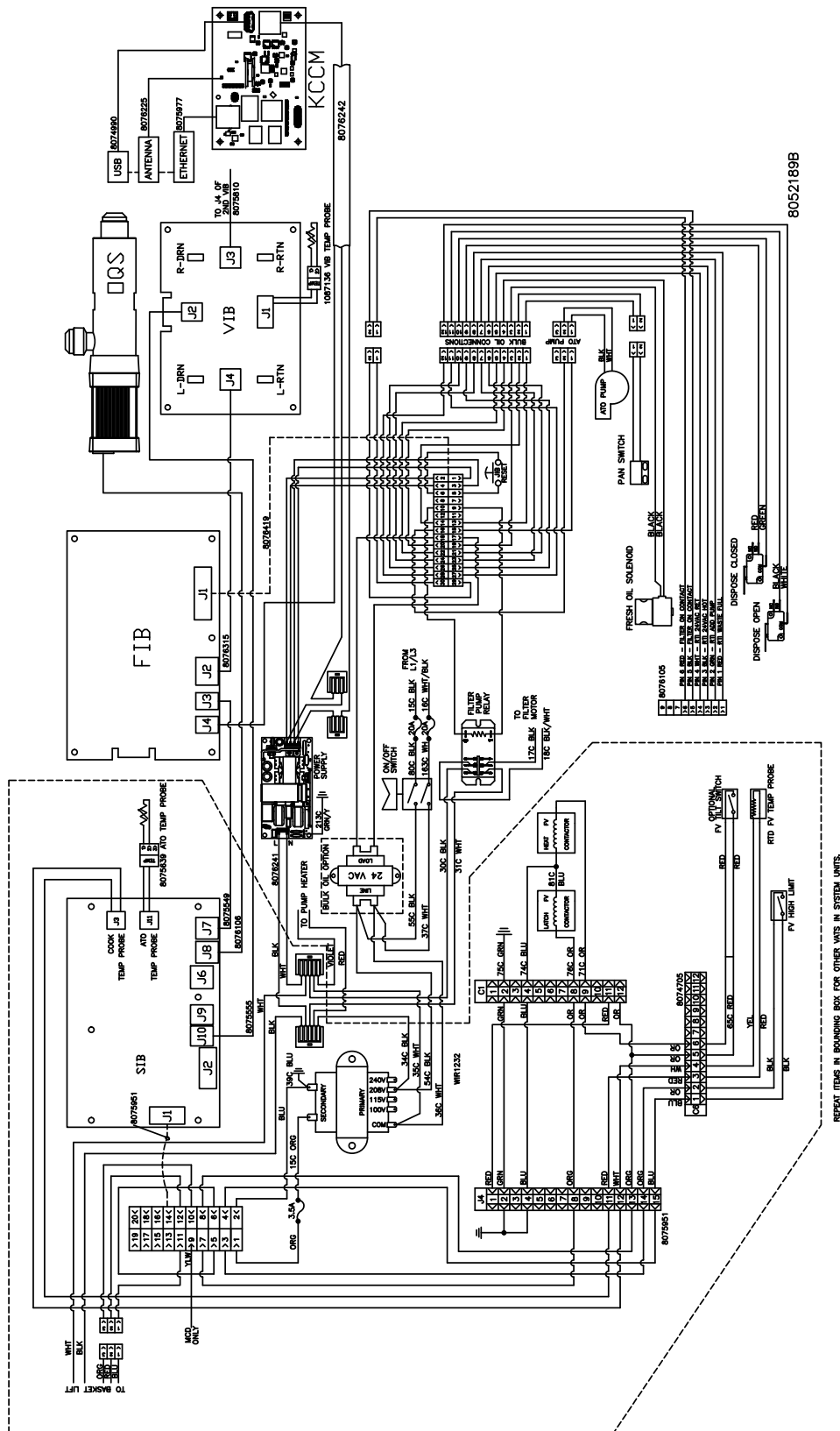
1.11.2 Basket Lift Assy and Associated Parts - 200V-250V - After June 2019 (Modular)



1.11.2 Basket Lift Assy and Associated Parts – 200V-250V - After June 2019 (Modular)

ITEM	PART #	COMPONENT
		Basket Lift Assemblies (see Note 1 in illustration)
A	1086896SP	Basket Lift Assy, 200-250VAC (Items 1-15)
1	1085031SP	Motor Assy, 208-250VAC Modular Basket Lift
2	8090129	Screw, 1/4-20 X 5/8 Slotted Round Head
3	8076253	Capacitor, 4.0 µFd 440VAC
4	8072572	Microswitch
5	8120442	Insulation, Microswitch Box
6	8068530SP	Resistor Assembly (see Note 2 in illustration)
7	WIR0166SP	Wire Assembly, 200-250V Basket Lift w/Relay
8	8101012	Rod, Modular BL
9	8130035	Bushing, Bronze
10	8090082	Ring, Bushing Retainer
11	8090810	Clamp, Nylon
12	2209678	Gusset, Reversing Basket Lift Motor
13	2219624	Chassis, H55 Modular Basket Lift
14	2229624	Chassis, H55 Modular Basket Lift
15	8071683	Relay, 12VDC
16	8104854	Lanyard, w/Ring
17	8239158	Arm, Left (Illustration May Slightly Differ)
18	8239159	Arm, Right (Illustration May Slightly Differ)
19	1086925	Guide, B/L Arm (Illustration May Slightly Differ)
20	2401693	Shield, Rear Modular B/L Cover
21	2401708	Cover, Modular B/L (Illustration May Slightly Differ)
22	2601474	Cover, Basket Hanger Rivet B/L
23	8090047	Nut, Cap ¼" -20
24	8104852	Pin, ¼" X 1-5/16" Quick Release

1.12 FilterQuick™ FQE60U-T Series Wiring



THIS PAGE INTENTIONALLY LEFT BLANK



FRYMASTER
8700 LINE AVENUE, SHREVEPORT, LA 71106-6800

800-551-8633
318-865-1711

WWW.FRYMASTER.COM

EMAIL: FRYSERVICE@FRYMASTER.COM

©2025 Frymaster LLC. except where explicitly stated otherwise. All rights reserved. Continuing product improvement may necessitate change of specifications without notice.

Part Number FRY_P_8197627 04/2025

