

Frymaster[®]

We Fit the Way You Fry[™]

FQE80U FilterQuick[™] easyTouch[®] Electric Fryer

Wiring Diagrams

This manual is updated as new information and models are released. Visit our website for the latest manual.



Keep these wiring diagrams with the fryer for future reference.



Part Number: FRY_D_8197783 02/2025

Original Instructions



WELBILT
an Ali Group Company

FQE80U FILTERQUICK™ easyTouch® SERIES ELECTRIC FRYER
Table of Contents

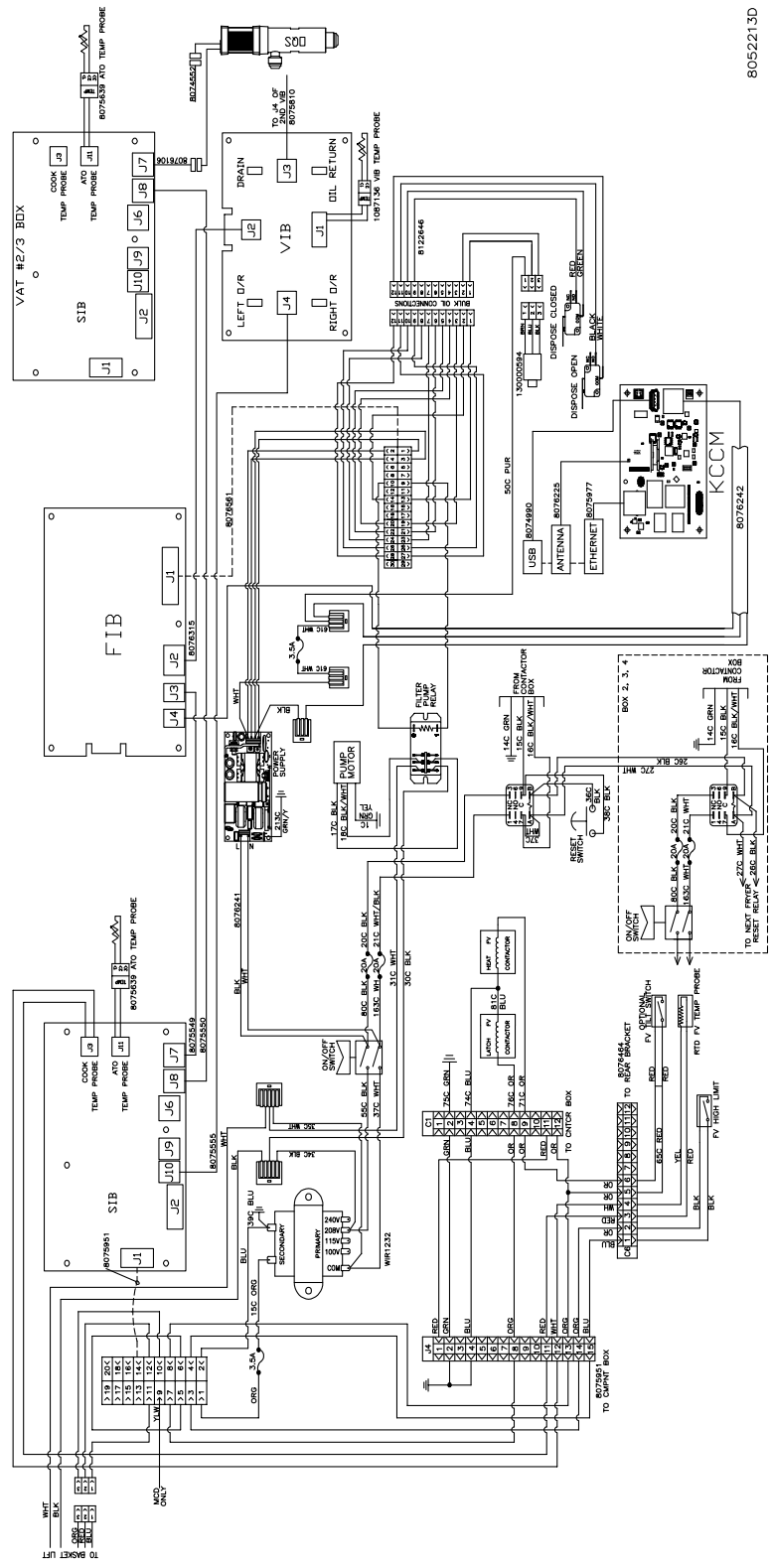
Chapter 1: Wiring Diagrams

1.1	Control Wiring (1FQE80)	1-1
1.2	Control Wiring (2FQE80/3FEQ80 with Easy Button Start)	1-2
1.2.1	Control Wiring (2FQE80/3FEQ80 with Easy Button Start) 120V/480V	1-3
1.3	Contactor Box – Delta Configuration.....	1-4
1.4	Contactor Box – WYE Configuration	1-5
1.4.1	Contactor Box – WYE Configuration Export (Two Heat Contactors).....	1-6
1.5	Basketlift Wiring	1-7

FQE80U FILTERQUICK™ easyTouch® SERIES ELECTRIC FRYER

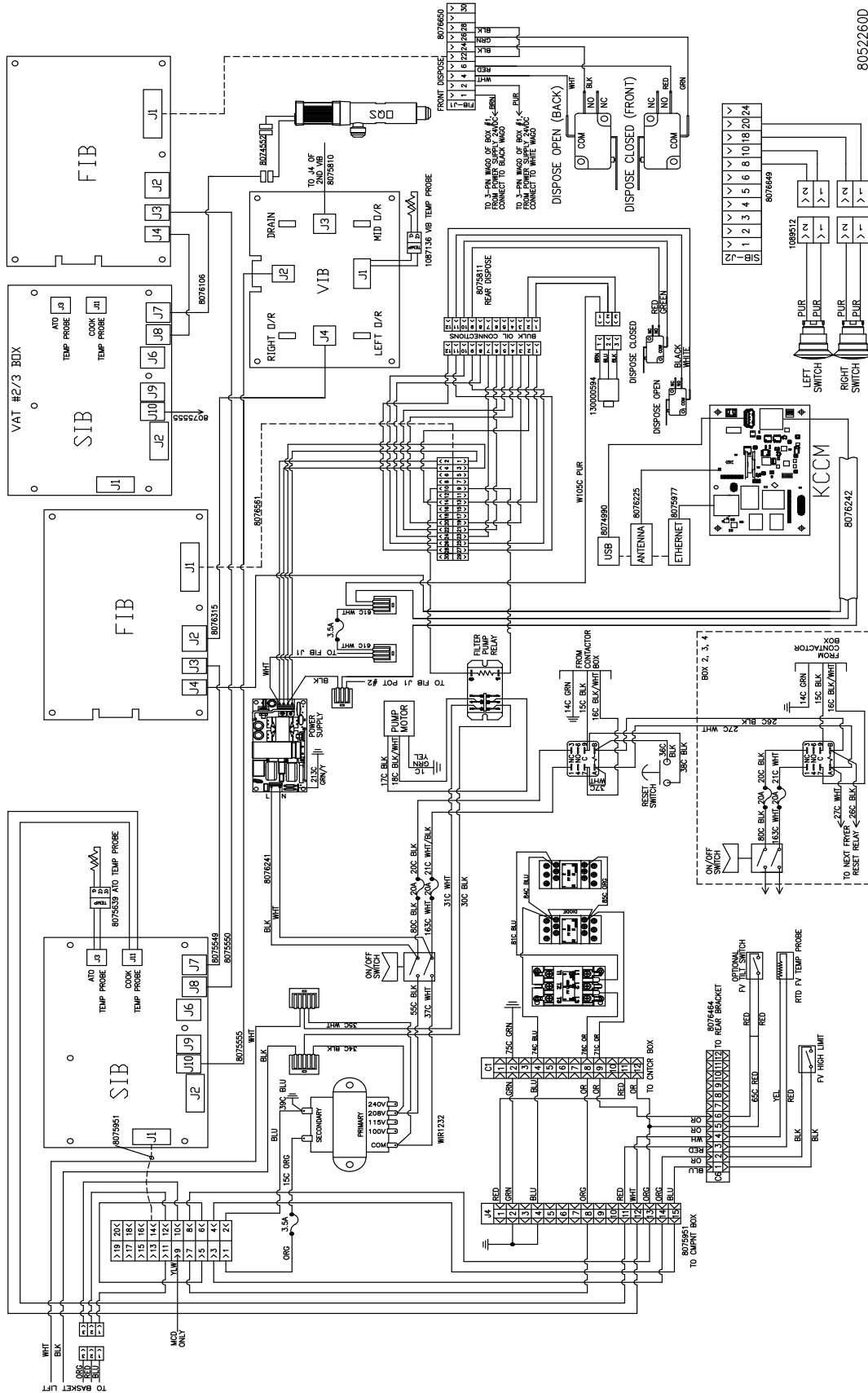
CHAPTER 1: WIRING DIAGRAMS

1.1 Control Wiring (1FQE80U-T)



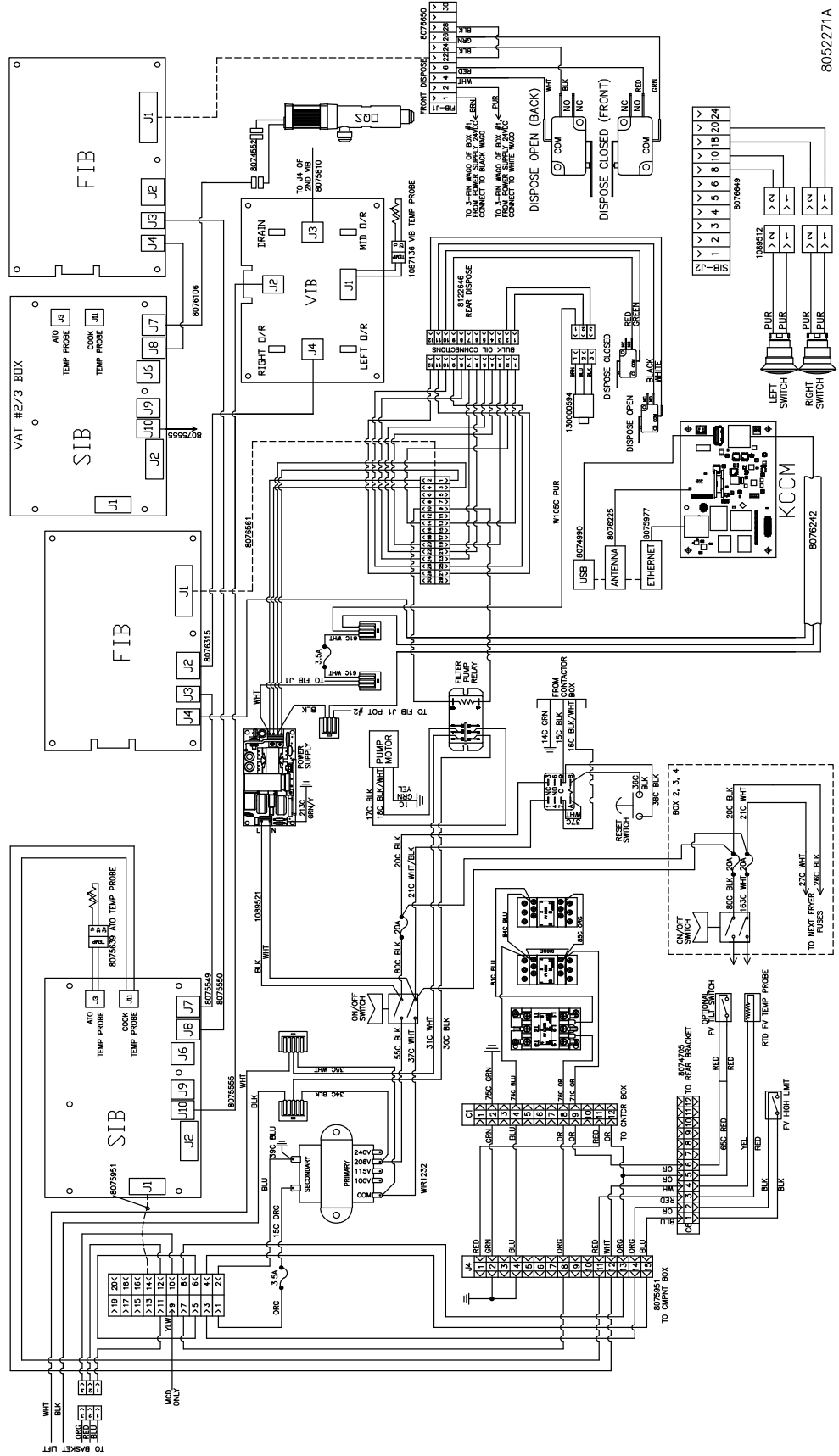
8052213D

1.2 Control Wiring (2/3FQE80U-T w/ Easy Button Start)



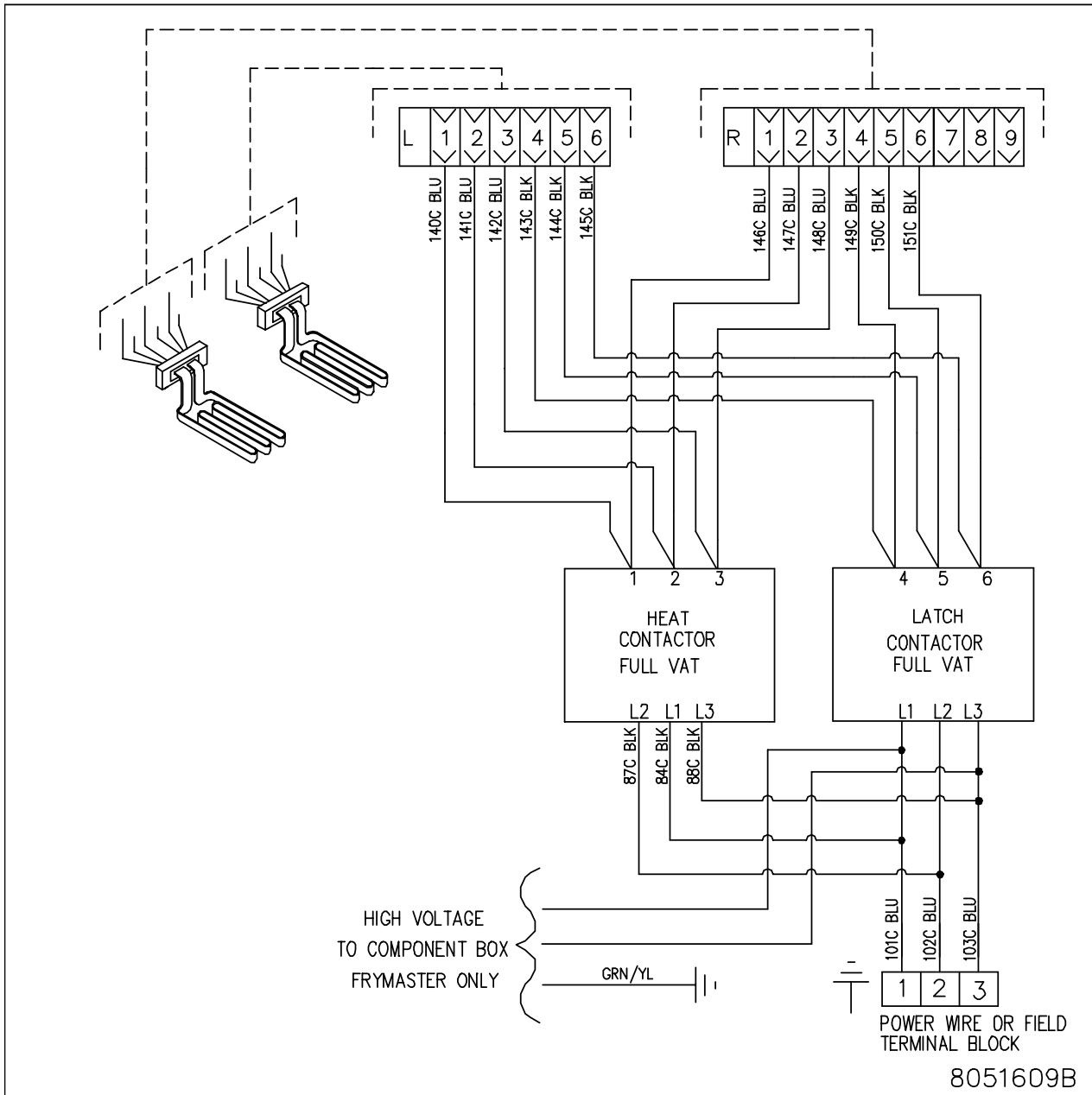
8052260D

1.2.1 Control Wiring (2/3FQE80U-T w/ Easy Button Start) 120V/480V

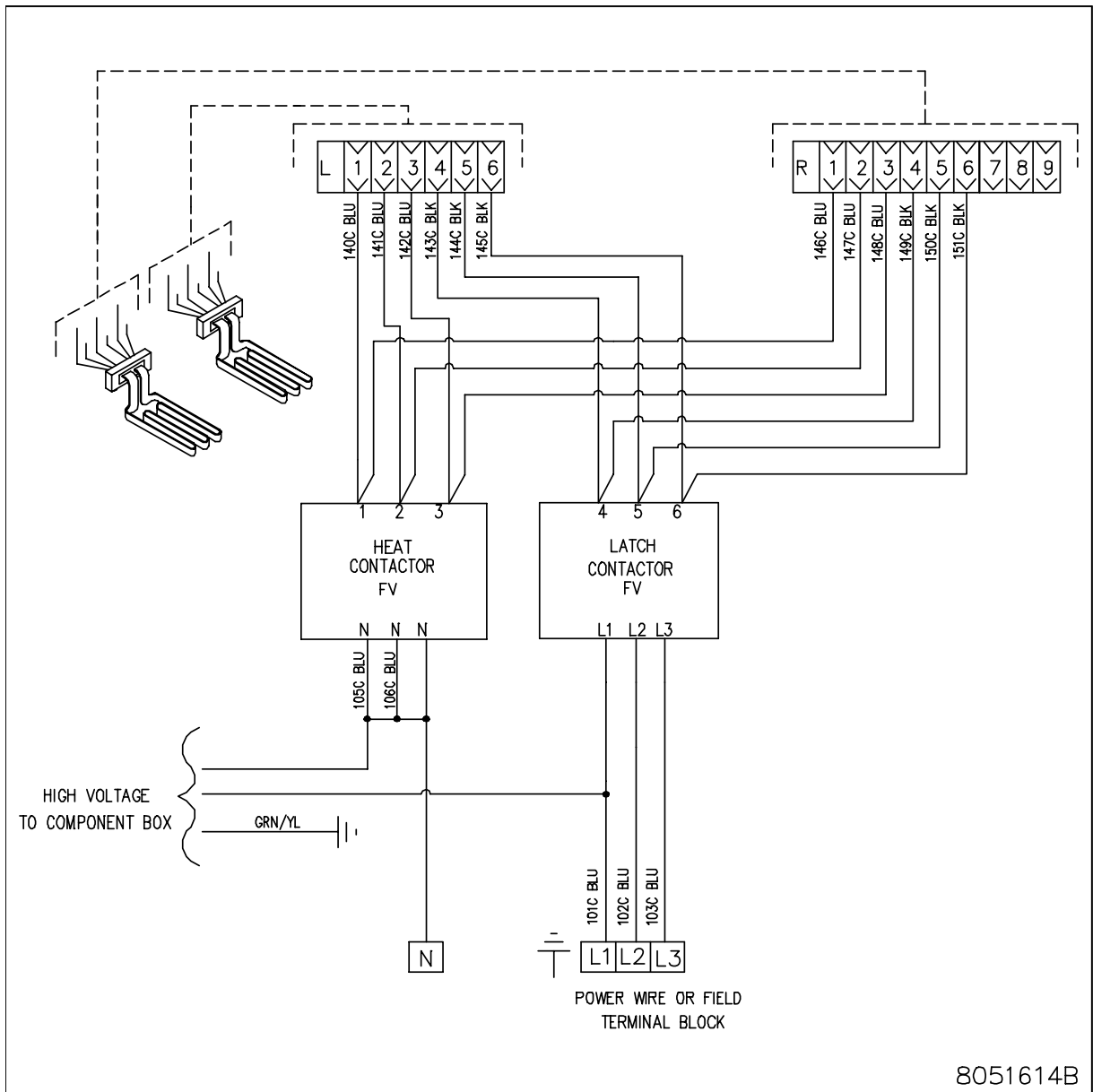


8052271A

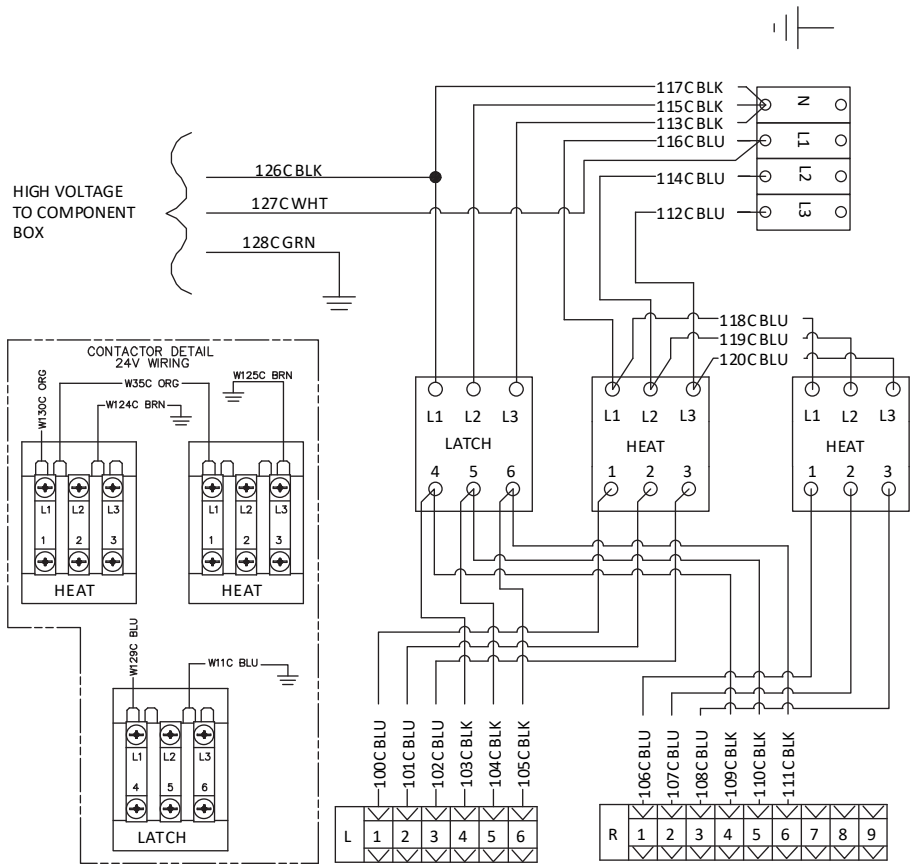
1.3 Contactor Box - Delta Configuration



1.4 Contactor Box - WYE Configuration

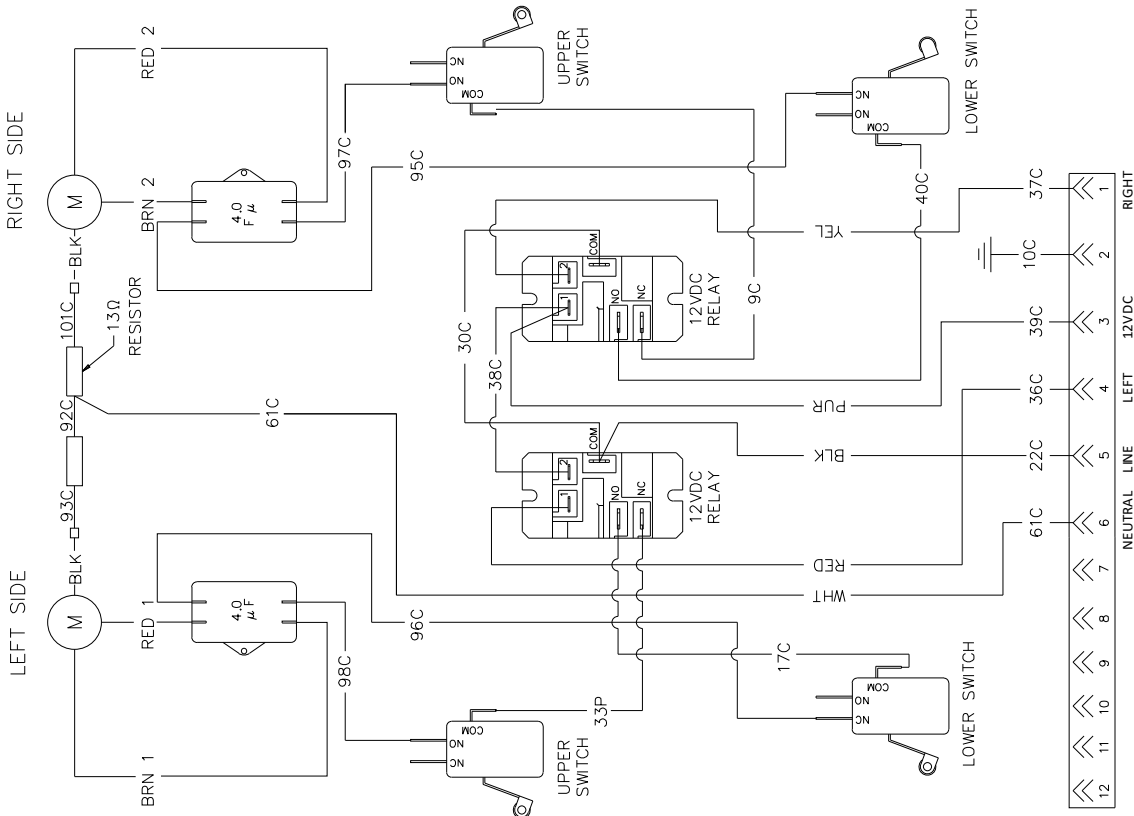


1.4.1 Contactor Box - WYE Configuration Export (Two Heat Contactors)



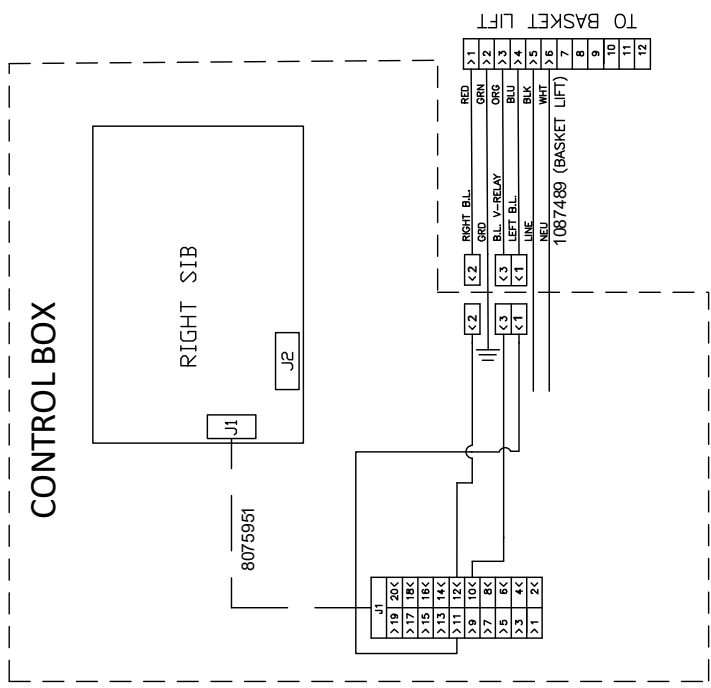
8051823E

1.5 Basketlift Wiring



8051964B

REFERENCES TO LEFT AND RIGHT ARE FROM THE FRONT OF THE FRYER





FRYMASTER
8700 LINE AVENUE, SHREVEPORT, LA 71106-6800

800-551-8633
318-865-1711

WWW.FRYMASTER.COM

EMAIL: FRYSERVICE@FRYMASTER.COM

©2025 Frymaster LLC. except where explicitly stated otherwise. All rights reserved. Continuing product improvement may necessitate change of specifications without notice.

Part Number FRY_D_8197783 02/2025

