

Frymaster[®]

We Fit the Way You Fry[™]

FilterQuick[™]

FQG80T/100T/120T easyTouch[®] Gas Fryer

Parts Manual

This manual is updated as new information and models are released. Visit our website for the latest manual.



Part Number: FRY_P_8197943 05/2025



NOTICE

IF, DURING THE WARRANTY PERIOD, THE CUSTOMER USES A PART FOR THIS FRYMASTER DEAN EQUIPMENT OTHER THAN AN UNMODIFIED NEW OR RECYCLED PART PURCHASED DIRECTLY FROM FRYMASTER DEAN, OR ANY OF ITS FACTORY AUTHORIZED SERVICERS, AND/OR THE PART BEING USED IS MODIFIED FROM ITS ORIGINAL CONFIGURATION, THIS WARRANTY WILL BE VOID. FURTHER, FRYMASTER DEAN AND ITS AFFILIATES WILL NOT BE LIABLE FOR ANY CLAIMS, DAMAGES OR EXPENSES INCURRED BY THE CUSTOMER WHICH ARISE DIRECTLY OR INDIRECTLY, IN WHOLE OR IN PART, DUE TO THE INSTALLATION OF ANY MODIFIED PART AND/OR PART RECEIVED FROM AN UNAUTHORIZED SERVICER.

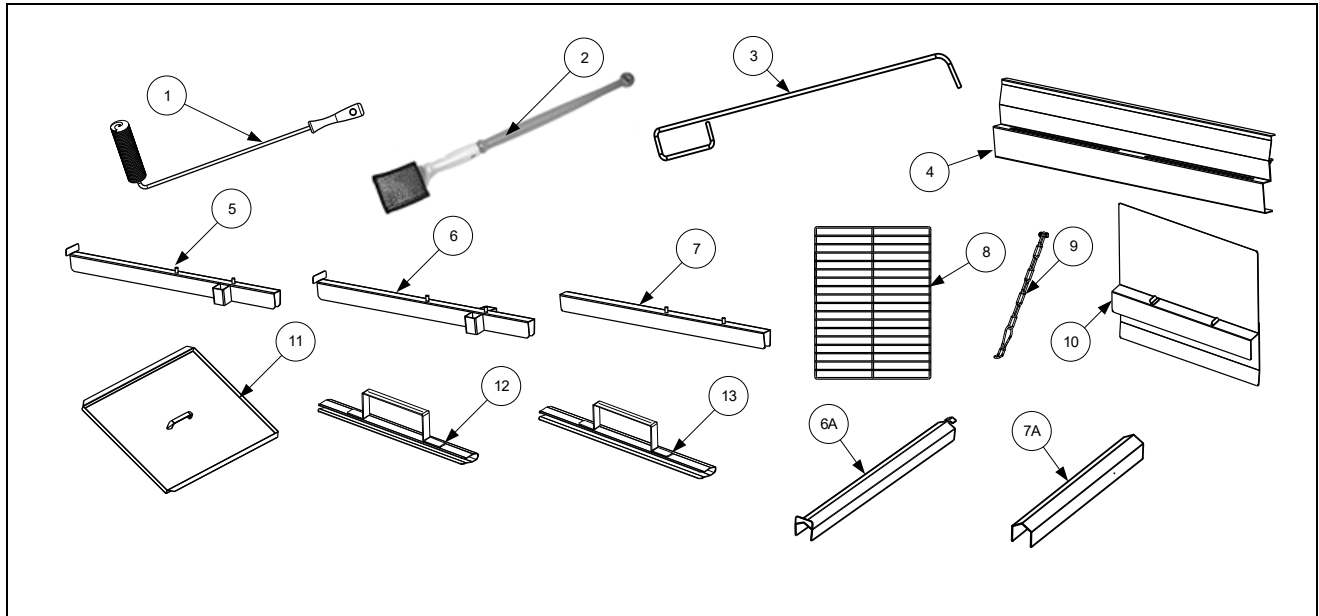
FQG80T-100T-120T easyTouch® FILTERQUICK™ SERIES GAS FRYERS
PARTS MANUAL
TABLE OF CONTENTS

CHAPTER 1: Parts List

1.1	Accessories	1-1
1.2	Doors, Sides, Flue Caps, Top Caps and Casters	1-2
1.3	Control Panel Frame Assemblies.....	1-3
1.4	Drain Tube Sections and Associated Parts	1-4
1.5	Electronics and Electrical Components	1-5
1.5.1	Component Boxes and Associated Parts	1-5
1.5.2	Transformer Boxes.....	1-7
1.5.3	VIB (Valve Interface Board) Components	1-8
1.5.4	Power Reset Switch and USB Connector	1-9
1.6	Wiring.....	1-9
1.6.1	Wiring Harness SIB to Rear of Component Box (Spark to Pilot)	1-9
1.6.2	Wiring Harness FIB, Power and Filter	1-10
1.6.3	Wiring Harness Filter, ATO, Power, Control	1-10
1.6.4	Wiring Harness Power, Float, VIB, Gas Valve	1-11
1.6.5	Wiring Harness Dispose, Pan Switch	1-11
1.7	Frypots and Associated Components	1-12
1.7.1	Frypot Components FQG80T	1-12
1.7.2	Frypot Components FQG100T	1-14
1.7.3	Frypot Components FQG120T	1-16
1.7.4	Frypot Assemblies and Associated Parts FQG80T	1-18
1.7.5	Frypot Assemblies and Associated Parts FQG100T	1-19
1.7.6	Frypot Assemblies and Associated Parts FQG120T	1-20
1.8	Oil Return Manifolds	1-21
1.9	Gas Supply and Combustion System Components	1-22
1.10	Filtration System Components	1-23
1.10.1.1	FQG120 Filter Pan and Accessories (Prior to 01/2022)	1-23
1.10.1.2	FQG120 Filter Pan and Accessories (From 01/2022 to 05/2023).....	1-24
1.10.1.3	FQG120 Filter Pan and Accessories (From 06/2023 to 12/2023).....	1-25
1.10.1.4	FQG120 Filter Pan and Accessories (From 12/2023 to Current)	1-26
1.10.1.5	FQG100 Filter Pan and Accessories.....	1-27
1.10.1.6	FQG80 Filter Pan and Accessories.....	1-28
1.10.2	Filter Pump and Accessories.....	1-29
1.10.3	Plumbing Front Oil Dispose/Filtration	1-30
1.10.4	Plumbing Front Oil Dispose/Filtration FQG80T	1-32
1.10.5	Plumbing Front Oil Dispose/Filtration FQG100T.....	1-33
1.10.6	Boil Out Adapter	1-35
1.11	FilterQuick™ FQG120T Series Wiring	1-36

FQG80T-100T-120T easyTouch® FILTERQUICK™ SERIES GAS FRYERS PARTS LIST

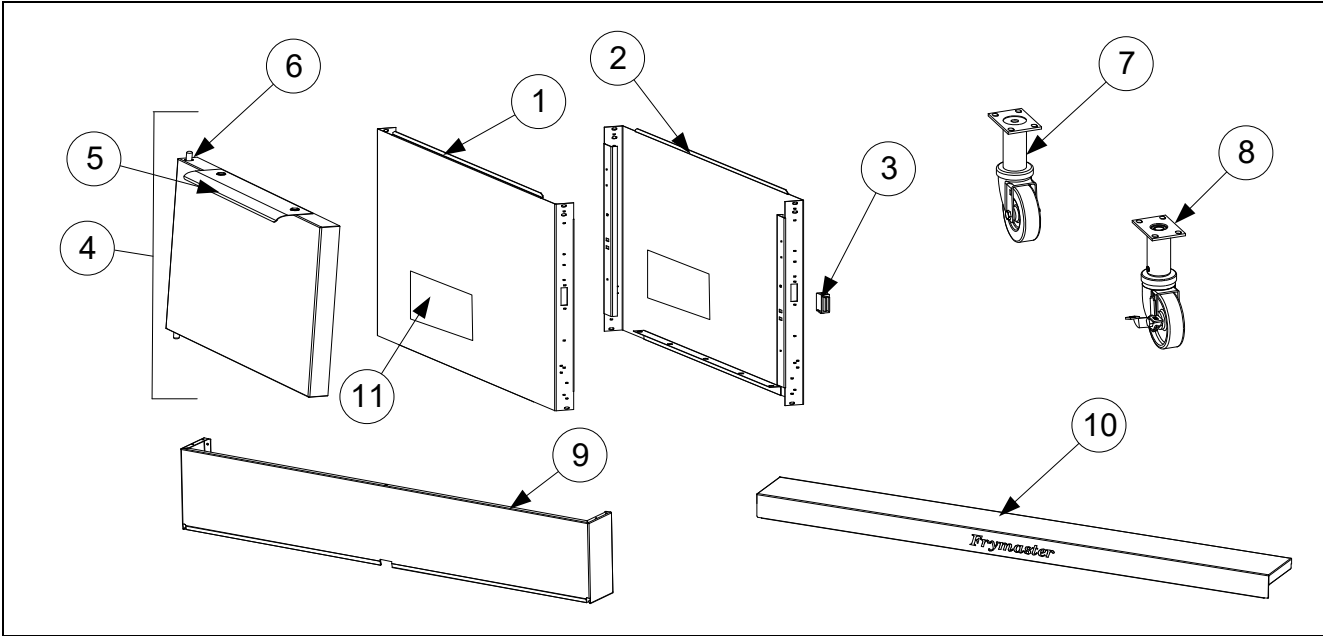
1.1 Accessories



ITEM	PART #	COMPONENT
1	8030429	BRUSH, FRYPOT
2	8030430	BRUSH, FRYPOT ECOLAB
3	8030196	FRYERS FRIEND
4	130001238	HANGER, BASKET (FQG80)
	8235859	HANGER, BASKET (FQG100)
	8239526	HANGER, BASKET (FQG120)
5	8268767	CONNECTING STRIP, SINGLE FRYPOT (3FQG80)
	8239003	CONNECTING STRIP, SINGLE FRYPOT (3FQG100)
	8239527	CONNECTING STRIP, SINGLE FRYPOT (3FQG120)
6	8238763	CONNECTING STRIP, DOUBLE FRYPOT (2FQG80, 3FQG80)
	8239002	CONNECTING STRIP, DOUBLE FRYPOT (2FQG100, 3FQG100)
	8239528	CONNECTING STRIP, DOUBLE FRYPOT (2FQG120, 3FQG120)
6A	8236907	CONNECTING STRIP, DOUBLE FRYPOT (2FQG80 RC)
7	8239573	CONNECTING STRIP, BATTERY JOINER (3FQG120)
7A	2105086	CONNECTING STRIP, BATTERY JOINER (2FQG80 RC)
8	8102235	BASKET SUPPORT RACK (FQG80)
	8103066	BASKET SUPPORT RACK (FQG100)
	8030528	BASKET SUPPORT RACK (FQG120)
9	8260900	KIT, CHAIN RESTRAINT
*	8261095	KIT, ANCHOR STRAP
10	130001218	SHIELD, SPLASH SHORT (FQG80)
	8239656	SHIELD, SPLASH (FQG100/FQG120)
11	1062773	COVER, FRYPOT (FQG80)
	1062897	COVER, FRYPOT (FQG100)
	1088956	COVER, FRYPOT (FQG120)
12	130001465	12" CLIP/HANDLE (FQG80/FQG100/FQG120)
13	130001469	17" CLIP/HANDLE (FQG80/FQG100/FQG120)

* Not illustrated.

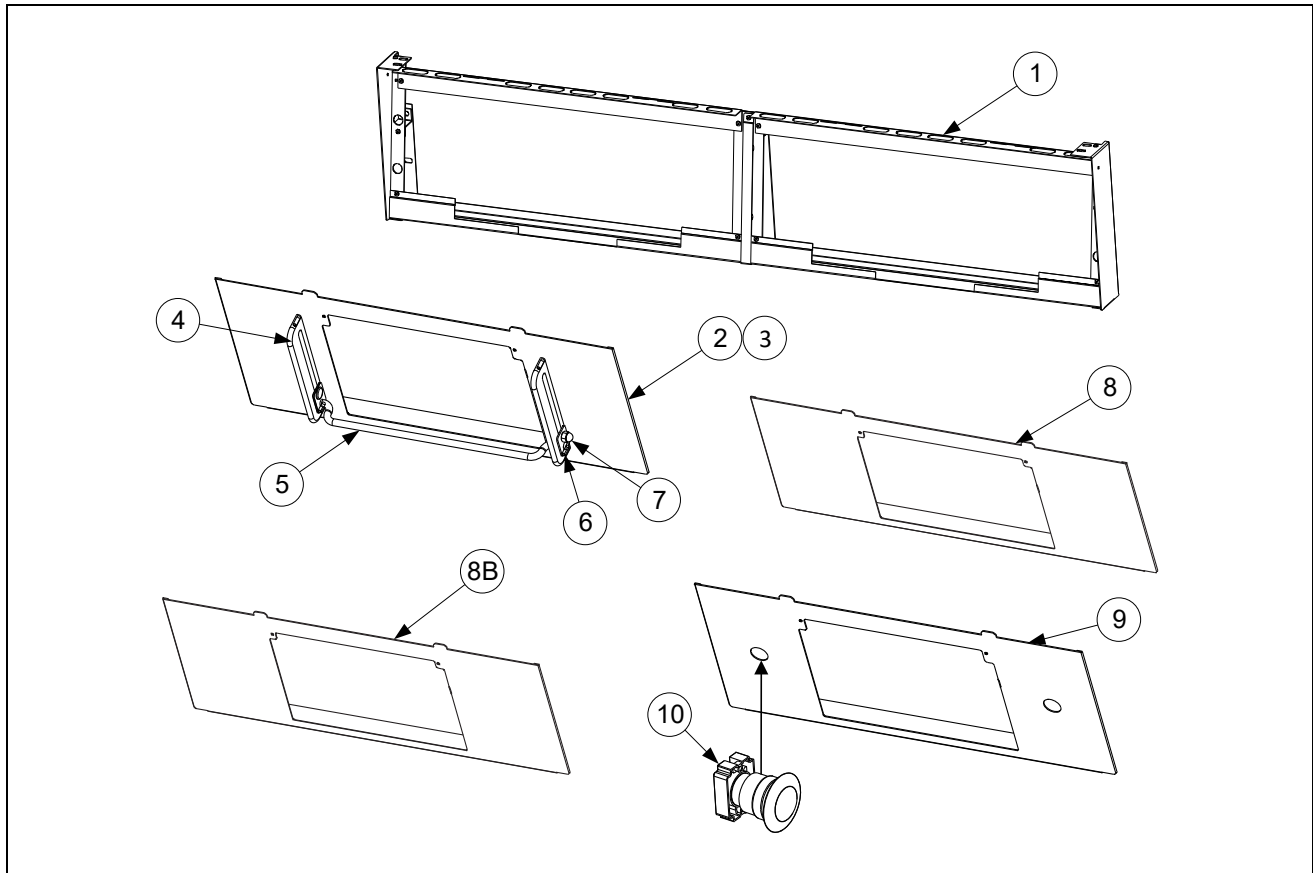
1.2 Doors, Sides, Flue Caps, Top Caps and Casters



ITEM	PART #	COMPONENT
1	130000749	SIDE, CABINET LEFT (FQG80)
	130000808	SIDE, CABINET LEFT (FQG100)
	2602584	SIDE, CABINET LEFT (FQG120)
2	130000750	SIDE, CABINET RIGHT (FQG80)
	130000809	SIDE, CABINET RIGHT (FQG100)
	2602585	SIDE, CABINET RIGHT (FQG120)
3	8102346	MAGNET, DOOR
4	130000748	DOOR (FQG80)
	1067710	DOOR (FQG100)
	1088206	DOOR (FQG120)
5	2304963	HANDLE, DOOR (FQG80/FQG100)
	2108077	HANDLE, DOOR (FQG120)
6	1064067	PIN ASSEMBLY, DOOR
*	8100275	SPRING, DOOR PIN
*	8100658	RETAINING RING
*	2307192	HINGE, DOOR LOWER
7	8100327	CASTER, REAR, WITHOUT BRAKE
8	8100326	CASTER, FRONT WITH BRAKE
9	2301833	FLUE CAP-STAINLESS STEEL (2FQG80)
	2301890	FLUE CAP-STAINLESS STEEL (3FQG80)
	2309486	FLUE CAP-STAINLESS STEEL (2FQG100)
	2309487	FLUE CAP-STAINLESS STEEL (3FQG100)
	2602479	FLUE CAP-STAINLESS STEEL (2FQG120)
	2602221	FLUE CAP-STAINLESS STEEL (3FQG120)
10	8236343	TOP CAP (2FQG80)
	8236342	TOP CAP (3FQG80)
	8241831	TOP CAP (2FQG100)
	8241871	TOP CAP (3FQG100)
	1088901	TOP CAP (2FQG120)
	1088642	TOP CAP (3FQG120)
11	2601622	COVER, SIDE HOLE

* Not illustrated.

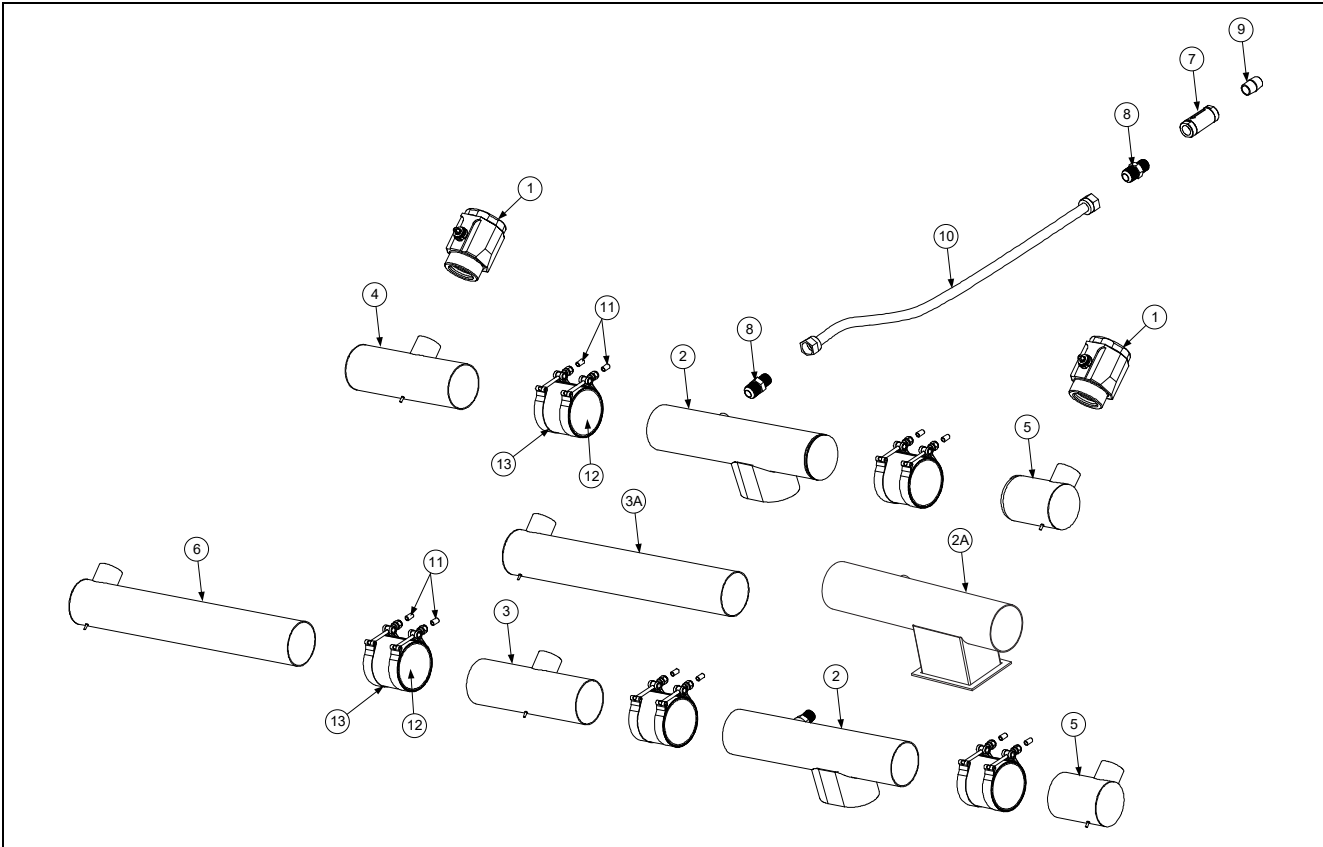
1.3 Control Panel Frame Assemblies



ITEM	PART #	COMPONENT
1	130000727	FRAME ASSEMBLY, CONTROL (2FQG100)
	1088902	FRAME ASSEMBLY, CONTROL (2FQG120)
	130000728	FRAME ASSEMBLY, CONTROL (3FQG100)
	1088205	FRAME ASSEMBLY, CONTROL (3FQG120)
2	1088204	BEZEL ASSEMBLY, CONTROL FQ120 (PRIOR TO 09/2022)
3	2602588	BEZEL, FQ120 TOUCHSCREEN
4	8104898	GUIDE, UIB ADJUSTABLE GUARD
5	8104899	BAR, GUARD (TOUCH SCREEN PROTECTION)
6	2602539	PLATE, OUTSIDE TIGHTENING
7	8090047	NUT, CAP ¼-20
8	130000613	BEZEL ASSEMBLY, CONTROL FQ100/120 (AFTER TO 08/2022) (USE W/ COMMON CONTROLLER)
8B	130000612	BEZEL, FQX60 SINGLE 4000 JABIL (FQG80 WITHOUT BUTTONS)
9	130000872	BEZEL ASSEMBLY, CONTROL FQ80 (FOR USE WITH BUTTONS) (USE W/ COMMON CONTROLLER)
10	130000873	BUTTON, PUSH GREEN (USE WITH ITEM #9)
*	1089512	HARNES, PUSH BUTTON (RAISING CANE'S)

* Not illustrated.

1.4 Drain Tube Sections and Associated Parts

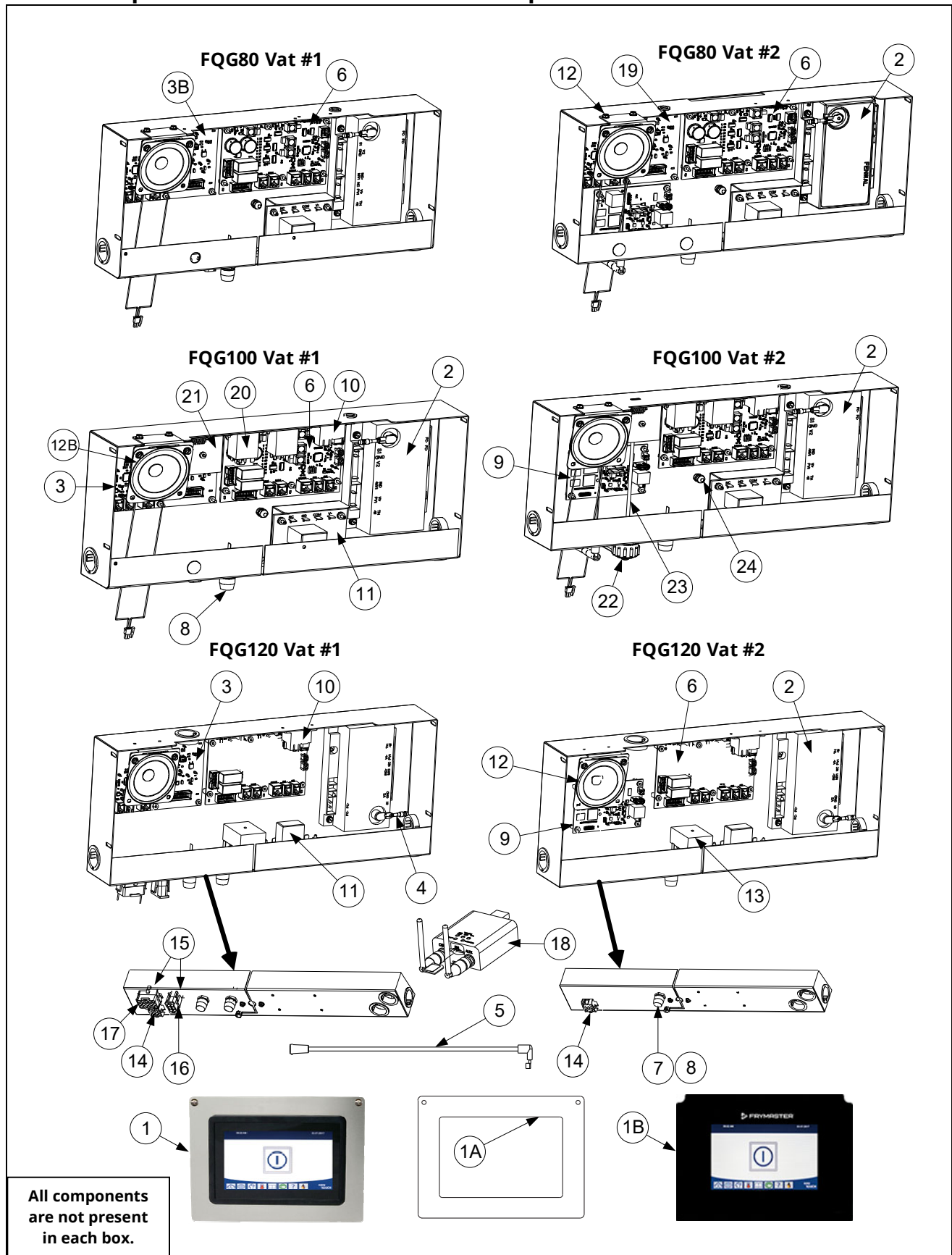


ITEM	PART #	COMPONENT
1	8263817	VALVE, DRAIN 1½" NPT KIT (INCLUDES 8160544 O-RING)
*	8160544	O-RING SEAL - DRAIN
2	8239559	TUBE W/A, DRAIN SPOUT FQG120 PRIOR TO 10/2021 (ROUND DRAIN)
2A	130000338	TUBE W/A, DRAIN SPOUT FQG80/FQG100/FQG120 AFTER 09/2021 (SQUARE DRAIN)
3	8239572	TUBE W/A, 3" DRAIN MIDDLE 3FQG120
3A	130000729	TUBE W/A, 3" DRAIN MIDDLE 3FQG100
4	8239646	TUBE W/A, 3" DRAIN LEFT (LEFT SIDE CONNECTOR) 2FQG120
	8237452	TUBE W/A, 3" DRAIN LEFT (SHORT) (LEFT SIDE CONNECTOR) 2FQG80/2FQG100
5	8239557	TUBE W/A, 3" DRAIN RIGHT (RIGHT SIDE CONNECTOR) FQG120
	8237633	TUBE W/A, 3" DRAIN RIGHT (RIGHT SIDE CONNECTOR) 2FQG80/2FQG100
6	8239558	TUBE W/A, 3" DRAIN LEFT (LEFT SIDE CONNECTOR) 3FQG120
7	8105084	VALVE, CHECK 20PSI
8	8101668	ADAPTOR, MALE ⅝" OD X ½"
9	8130022	NIPPLE, ½" X CLOSE NPT
10	8101069	FLEXLINE, ⅝" X 29.50" LONG
11	8160665	VINYL CAP
12	8160772	SLEEVE, DRAIN CONNECTOR
13	8091095	CLAMP

* Not illustrated.

1.5 Electronics and Electrical Components

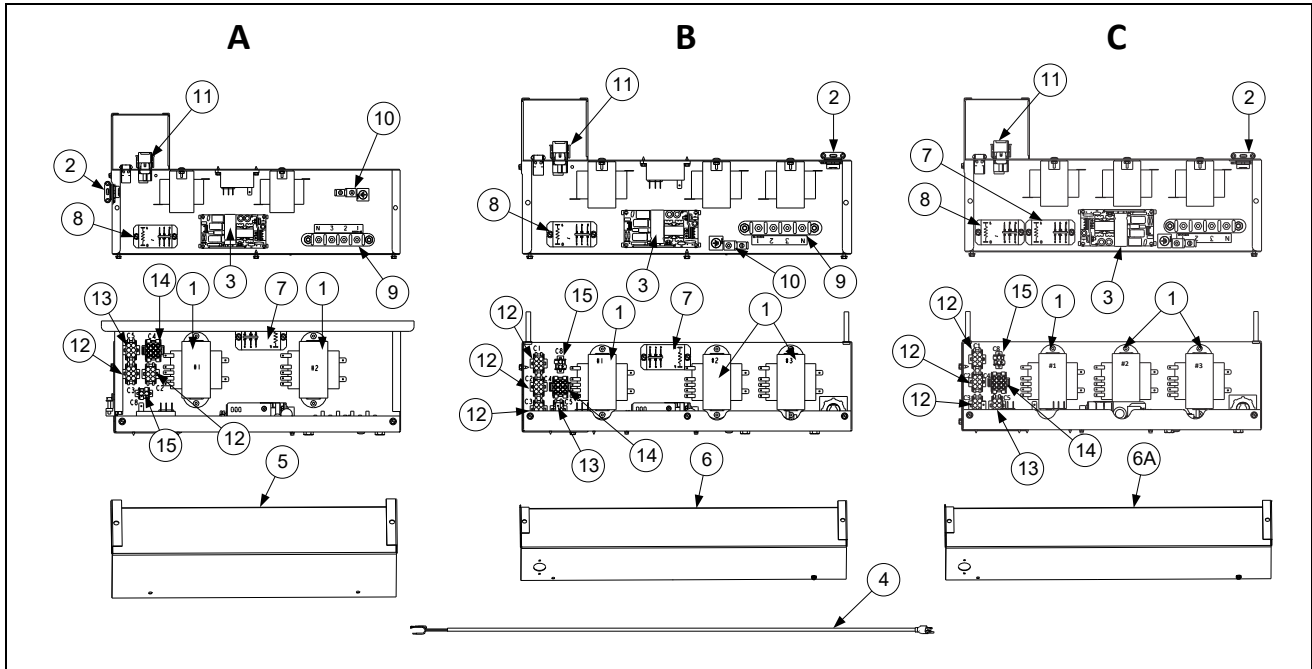
1.5.1 Component Boxes and Associated Components



ITEM	PART #	COMPONENT
√ 1	1089420SP	CONTROLLER, FQ4000 FQG120T POPEYE'S (for fryers manufactured 09/2022 to Present)
	1089421SP	CONTROLLER, FQ4000 FQG120T POPEYE'S (CANADA) (for fryers manufactured 09/2022 to Present)
	1089543SP	CONTROLLER, FQ4000 FQG80T RAISING CANE'S (for fryers manufactured 09/2022 to Present)
	1089545SP	CONTROLLER, FQ4000 FQG80T SLIM CHICKENS (for fryers manufactured 09/2022 to Present)
1A	130000613	BEZEL, COMMON UI (METAL BEZEL ONLY) (FOR FRYERS MANUFACTURED FROM 09/2022 TO PRESENT)
*	8076596	4000 TRANSFER HARNESS (CONNECTS COMMON CONTROLLER TO SIB BOARD)
√ 1B	8263731	CONTROLLER, FQ4000 FQG120T POPEYE'S (for fryers manufactured prior to 09/2022)
	8263732	CONTROLLER, FQ4000 FQG120T POPEYE'S (CANADA) (for fryers manufactured prior to 09/2022)
√ 2	130197410	MODULE, IGNITION FENWAL STP
√ 3	1088490SP	BOARD, FIB W/ SOFTWARE (POPEYE'S)
√ 3B	1089542SP	BOARD, FIB W/ SOFTWARE GM (RAISING CANES, SLIM CHICKENS, ETC)
4	8073484	CONNECTOR, RAJAH
√ 5	1067535	CABLE, IGNITION 31-INCH
√ 6	1087511SP	BOARD, INTERFACE SIB (SMART INTERFACE BOARD)
√ 7	8071321	FUSE HOLDER
√ 8	8075570	FUSE 3.5A 250V
√ 9	8076148	BOARD, FQ4000 KCCM (SUI)
√ 10	8071683	RELAY, 12 VDC
√ 11	8076402	BOARD, 3.5-SECOND TIME DELAY RELAY 24VDC
√ 12	8075829	SPEAKER 4 OHM
12B	1087733	SPEAKER ASSEMBLY, FQ4000
√ 13	8073516	THERMOSTAT, 435° OF MV HI-LIMIT (FQG120)
	8073560	THERMOSTAT, 410° F W/MANUAL RESET HI-LIMIT (FQG100 CE)
	8073680	THERMOSTAT, 450° F W/MANUAL RESET HI-LIMIT (FQG80)
√ *	8105076	LANYARD, CONTROLLER RESTRAINT (USE 1088791 FOR LANYARD W/ VAT ID CONNECTOR)
14	8076449	HARNESS, IGNITION MODULE SPARK TO PILOT FQG120 (J1 SIB/J2 SIB TO C1, IGN MOD)
15	8076450	HARNESS, FQG120 FIB PWR/FLTR/BLK (CONNECTS FIB PIN J1 TO C6 (15-PIN) & CX (6-PIN))
16	8076440	HARNESS, FQG60 FLTR/ATO PWR/CNT
17	8076443	HARNESS, FRONT DISPOSE NON ATO
18	1088878SP	MODEM ASSY, (INCLUDES MODEM AND SIM CARD)
√ 19	1089539SP	BOARD, IOB W/ SOFTWARE GM (RAISING CANES, SLIM CHICKENS, ETC)
20	8075304	RELAY ASSEMBLY, CONTROL (FQG100)
21	8122185	TIMER RELAY DIP SWITCH SETTINGS (8075166)
22	8075970	CAP, DUST 84700 SERIES JACK
23	8075969	CABLE, USB TYPR-A RECPT PNL MNT
24	8090256	NUT, KEPS 10-32 HX ZP (GROUND STUD)
		SEE WIRING DIAGRAMS IN FQG80-T/100-T/120-T SERVICE MANUAL FOR CABLE LOCATIONS
*	8075555	CABLE, P-BUS W/ POWER RIGHT SIB (J9) TO VIB (VALVE INTERFACE BOARD) (J2)
*	8075550	CABLE, C-BUS SIB (J7) VAT #2 TO SIB (J8) VAT #3
*	8075549	CABLE, C-BUS SIB (J8) TO FIB (FILTRATION INTERFACE BOARD) (J4) VAT #1
*	8076315	CABLE, C-BUS SIB (J2) TO VIB (VALVE INTERFACE BOARD) (J4)
*	8076451	CABLE, C-BUS FIB (FILTRATION INTERFACE BOARD) (J3) VAT #1 TO SIB (J8) VAT #2
*	8076225	CABLE, U. FL TO RP-SMA BULKHEAD (CONNECTS KCCM (SUI) TO ANTENNA 8075975 (ITEM 16))
*	8075977	CABLE, RJ45 OVERMOLD CAT5E 0.2MM (CONNECTS KCCM (SUI) RJ45 TO 8075967 (ITEM 14))
*	8074990	CABLE, USB UHCHD (CONNECTS KCCM (SUI) USB TO 8074989 (ITEM 17))
*	8075969	CABLE, USB TYPR-A RECPT PNL MNT (CONNECTS TO KCCM (SUI) USB PORT ON VATS #2 & #3)
*	8076532	CABLE, USB TO MERLIN 18"
*	8076533	CABLE, USB TO MERLIN 72"
*	8076106	ADAPTER, RJ11 CAN SIB (J7) TO LEGACY 6-PIN (MICROMATE/LOCK) (OQS SENSOR OR KCCM TO SIB 5")
*	8074552	TERMINATOR, CAN (ONLY USED ON OQS HARNESS Y- ADAPTOR)
*	8075632	TERMINATOR, CAN END COMMUNICATION RJ11 (USED IN SIB J7 IF OQS IS <u>NOT</u> INSTALLED)
*	8076452	HARNESS, FQ4000 SUI BOARD PWR/COM (CONNECTS TO WAGOS & SIB PIN J7 (8076106))
*	8075810	CABLE, VIB ACTUATOR POWER (FQ80 & FQ100)
*	8075553	CABLE, P-BUS SIB TO SIB (FQG80)

* Not illustrated. ✓ Recommended parts.

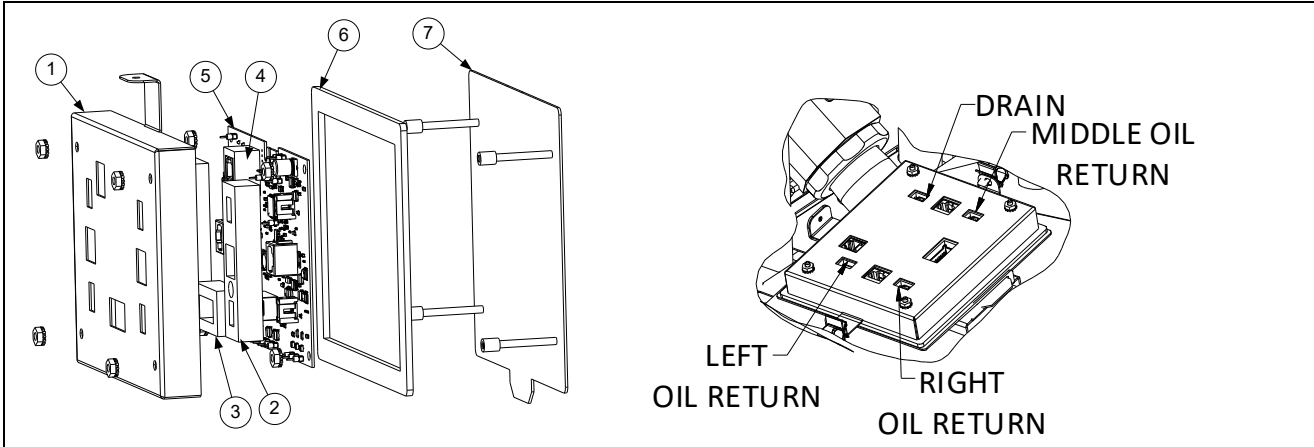
1.5.2 Transformer Boxes



ITEM	PART #	COMPONENT
		BOX ASSEMBLY, TRANSFORMER
A	1088899	2FQG80T, 2FQG100T, 2FQG120T
	130000938	BOX ASSEMBLY, TRANSFORMER 2FQG 100T, 230V
B	1088898	3FQG120T
C	130000731	3FQG80T, 3FQG100T (120V)
	130000937	BOX ASSEMBLY, TRANSFORMER 3FQG 100T, 230V (PRIOR TO 04/2024)
	130243600	BOX ASSEMBLY, TRANSFORMER 3FQG 100T, 230V (04/2024 TO PRESENT)
✓ 1	8075362	TRANSFORMER, 115-240V 80VA 24VAC
2	1088976	CONDUIT ASSY (3FQG120T)
✓ 3	8263684	POWER SUPPLY, 24VDC 130W ATO
4	8076531	CORDSET
5	2402022	COVER, TRANSFORMER BOX (2FQG80T, 2FQG100T, 2FQG120T)
6	2401992	COVER, TRANSFORMER BOX (3FQG120T)
6A	130000734	COVER, TRANSFORMER BOX (3FQG80T, 3FQG100T)
7	8075802	RELAY, DPDT 30A (120VAC) (CONTROL POWER RESET BUTTON)
	130000358	RELAY, DPDT 30A (240VAC) (CONTROL POWER RESET BUTTON)
8	8074482	RELAY, DPDT 30A 24VDC (FILTER PUMP)
9	8071973	TERMINAL, POST
10	8070070	TERMINAL, GROUND LUG
11	8070155	CONNECTOR, CIRCUIT 9 PIN HSG. (PLUG)
12	1088451	HARNESS, TRANSFORMER VAT #2
13	8076447	HARNESS, FQG120 GAS FIB PWR/PUMP CONTROL
14	1088466	HARNESS, FQ120 FILTER MOTOR
15	1088229	HARNESS, RESET RELAY
*	8076241	HARNESS, POWER SUPPLY
*	WIR1245	WIRE ASSY, TRANSFORMER
*	8074056	CONNECTOR, 3-WIRE SNAP
*	8074154	CONNECTOR, 5-WIRE SNAP

✓ Recommended parts Not illustrated

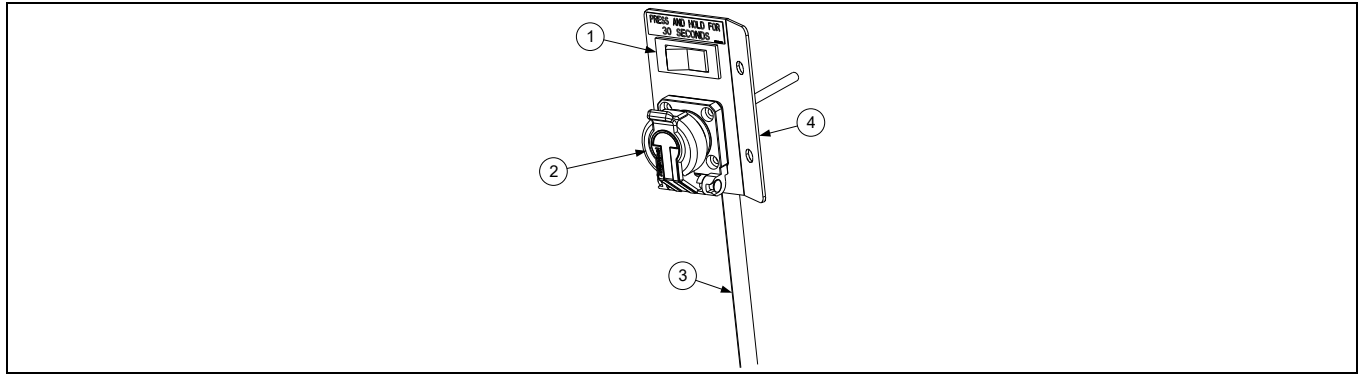
1.5.3 VIB (Valve Interface Board) Components



ITEM	PART #	COMPONENT
√	1087514SP	VIB BOARD ASSEMBLY (FQG120T)
	1088480SP	VIB BOARD ASSEMBLY (FQG100T)
	1089546SP	VIB BOARD ASSEMBLY (FQG80T)
1	8242346	COVER, VIB BOARD HOUSING
2	8161015	GASKET, ACTUATOR POWER VIB
3	8161013	GASKET, 20 PIN VIB CONNECTOR
4	8161014	GASKET, P-BUS VIB CONNECTOR
5	1087512SP	BOARD, VIB WITH SW (FQG120T)
	1088479SP	BOARD, VIB WITH SW (FQG100T)
	1089541SP	BOARD, VIB WITH SW (FQG80T)
6	8160820	SEAL, LINEAR ACTUATOR BOARD
7	1087280	PANEL, ASSY VIB BOX BOTTOM STUD
*	8075555	CABLE, P-BUS W/ POWER SIB (J9) TO VIB (VALVE INTERFACE BOARD) (J2)
*	8076315	CABLE, C-BUS FIB (J2) TO VIB (VALVE INTERFACE BOARD) (J4)
*	8075810	CABLE, VIB ACTUATOR POWER (USED FROM VIB (J3) TO VIB (J4))

√ Recommended parts. * Not illustrated

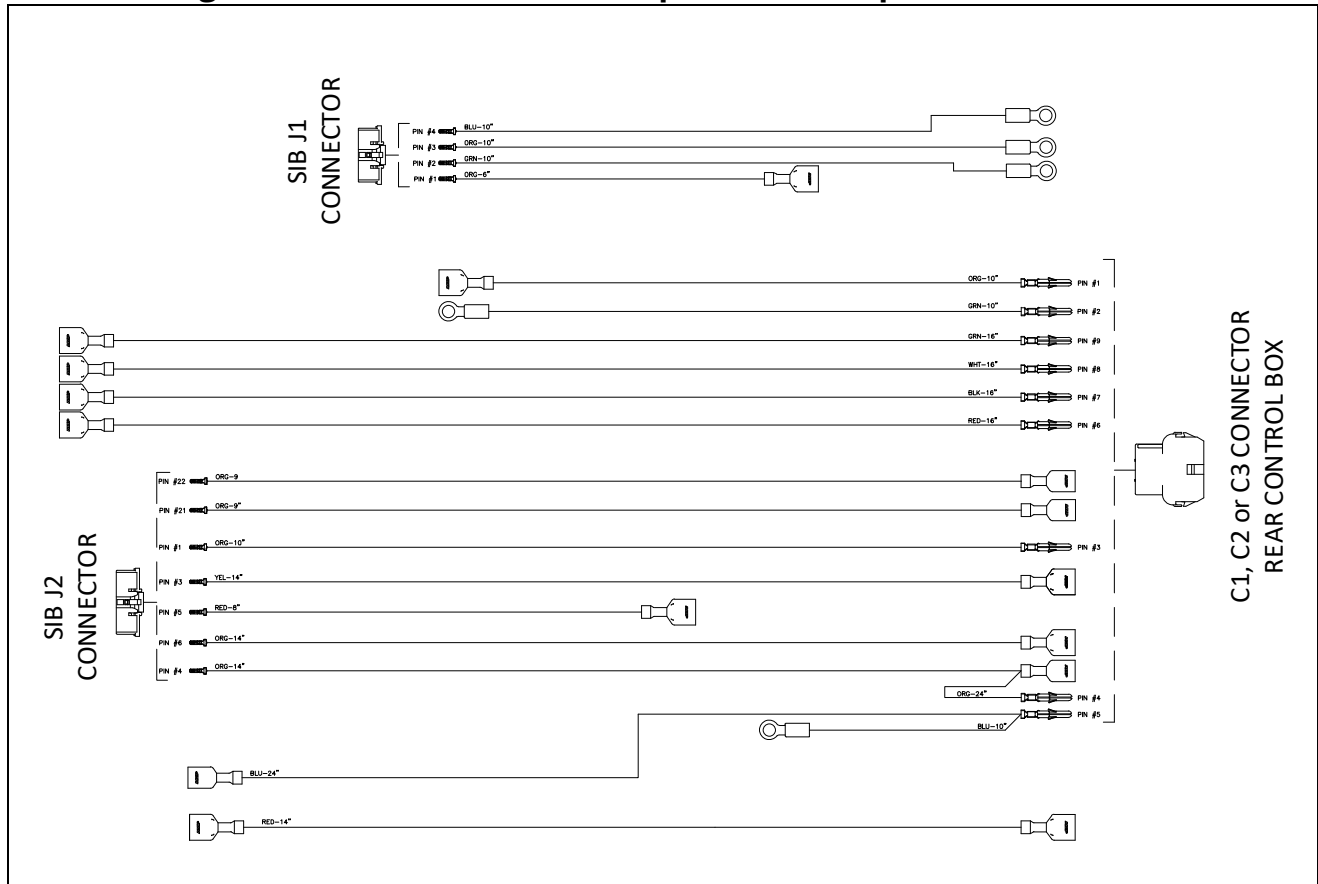
1.5.4 Power Reset Switch and USB Connector



ITEM	PART #	COMPONENT
	1088380	BRACKET ASSY, USB MOUNTING
1	8072659	SWITCH, MOMENTARY (POWER RESET)
2	8105041	USB, SELF CLOSING FLANGE
3	1088233	HARNESS ASSY, FQ/M4000 GAS RESET
4	2602358	BRACKET, USB/RESET

1.6 Wiring

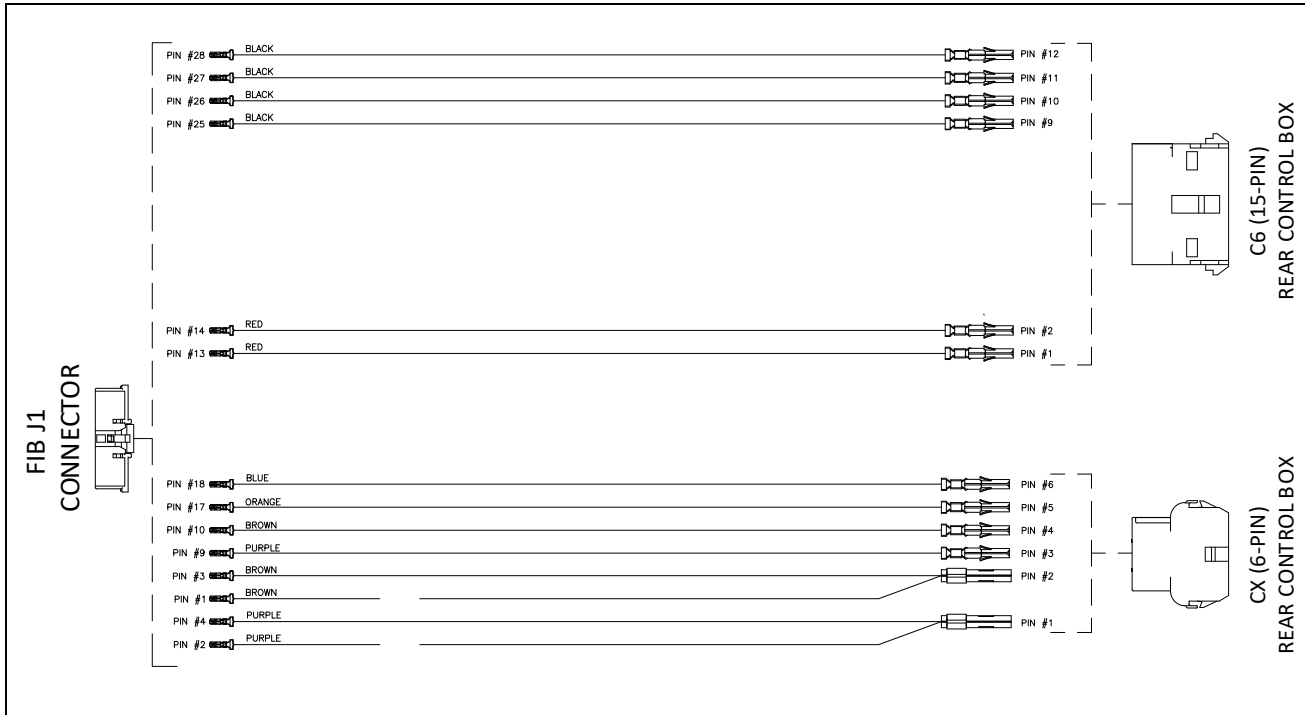
1.6.1 Wiring Harness SIB to Rear of Component Box (Spark to Pilot)



ITEM	PART #	COMPONENT
	8076449	HARNESS, SPARK TO PILOT TOUCH VAT CONTROLS

See the FQG80T/100-T/120-T wiring diagrams at end of chapter.

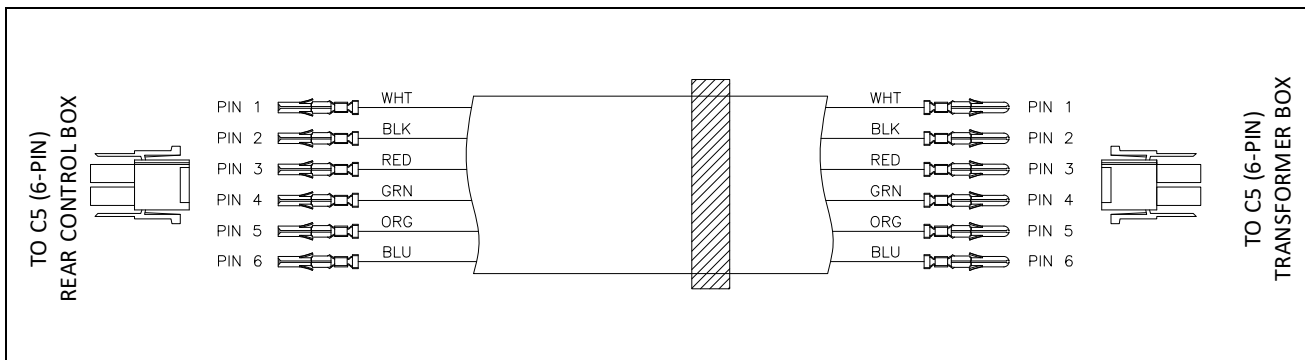
1.6.2 Wiring Harness FIB, Power and Filter



ITEM	PART #	COMPONENT
	8076450	HARNESS, FIB, POWER, FILTER

See the FQG80T/100-T/120-T wiring diagrams at end of chapter.

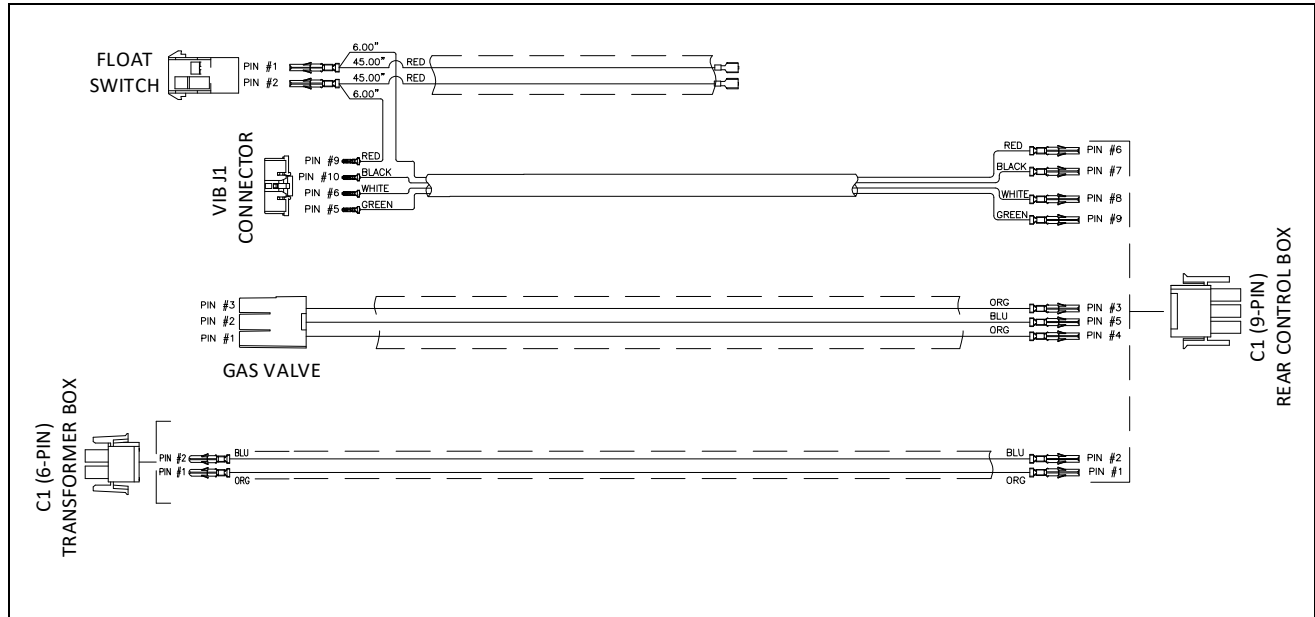
1.6.3 Wiring Harness Filter, ATO, Power and Control



ITEM	PART #	COMPONENT
	8076440	HARNESS, FILTER, ATO, POWER, CTL

See the FQG80T/100-T/120-T wiring diagrams at end of chapter.

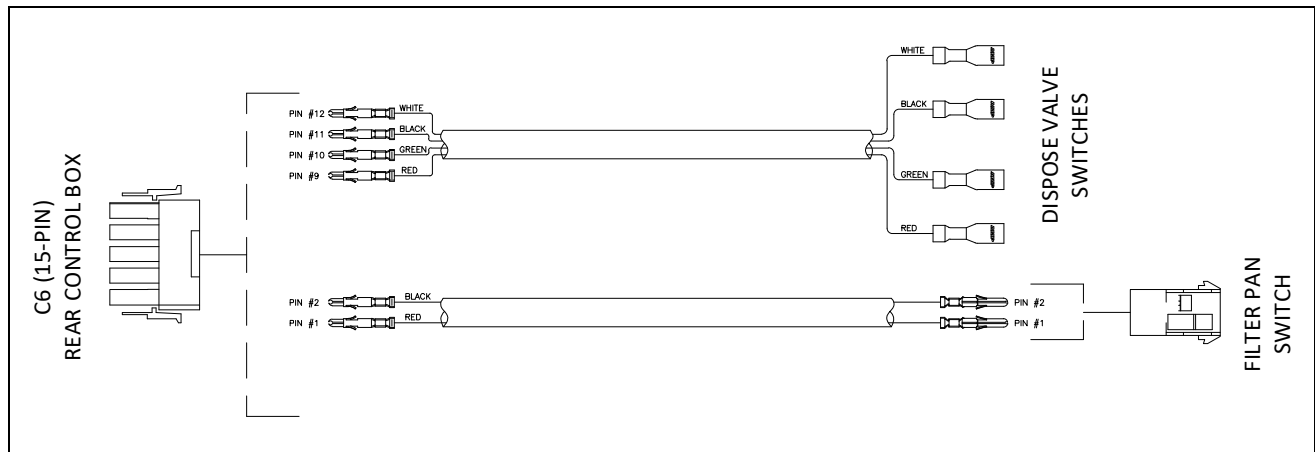
1.6.4 Wiring Harness Power, Float, VIB, Gas Valve



ITEM	PART #	COMPONENT
	8076448	HARNES, VAT POWER, FLOAT, VIB, GAS
	1088979	HARNES, ASSY PROBE, VIB (INCLUDES 8076448 PLUS VIB PROBE 8075805)

See the FQG80T/100-T/120-T wiring diagrams at end of chapter.

1.6.5 Wiring Harness Dispose, Pan Switch

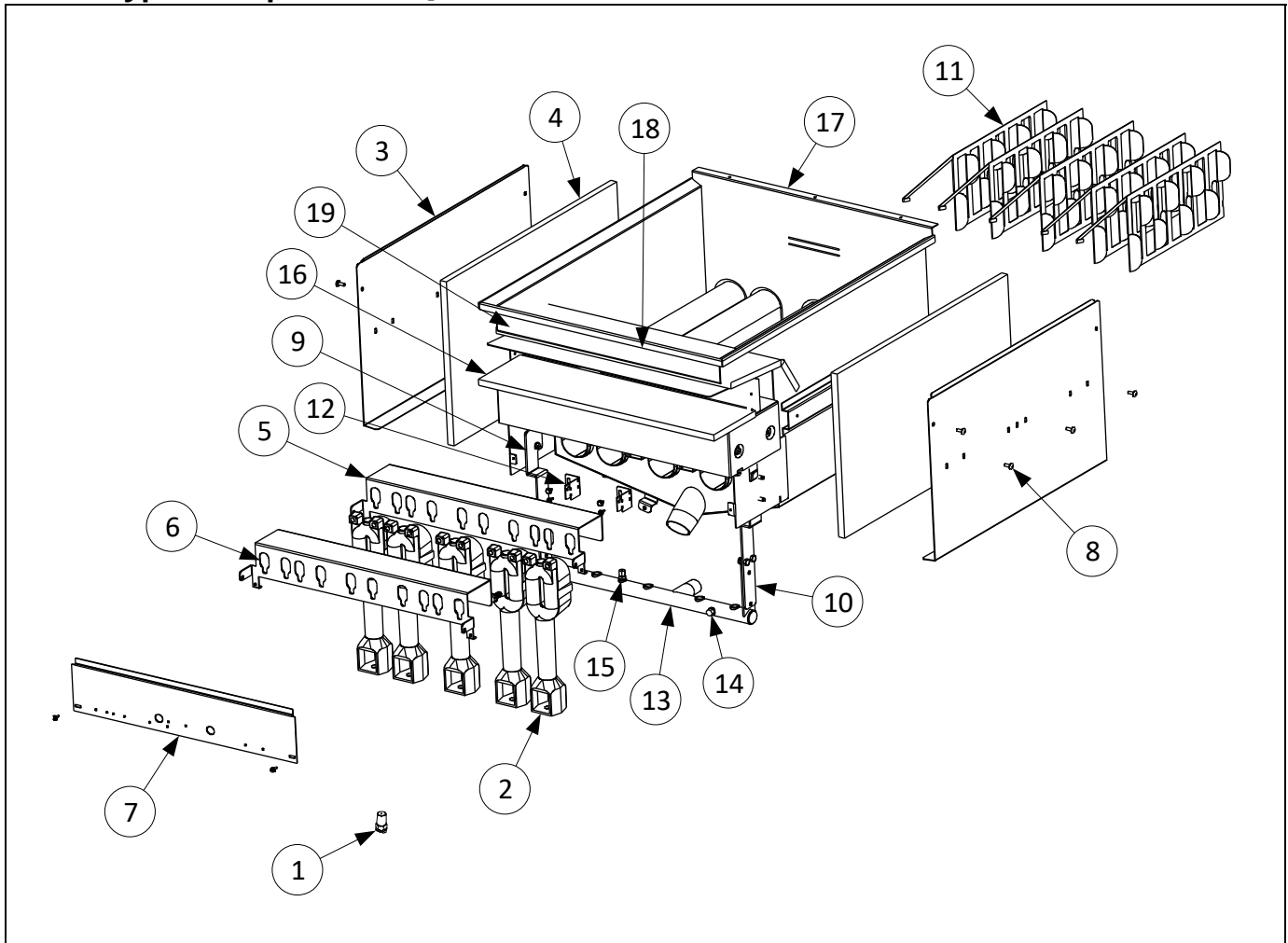


ITEM	PART #	COMPONENT
	8076443	HARNES, DISPOSE/PAN SWITCH

See the FQG80T/100-T/120-T wiring diagrams at end of chapter.

1.7 Frypots and Associated Components

1.7.1 Frypot Components FQG80T



1.7.1 Frypot Components FQG80T

ITEM	PART #	COMPONENT
1	13000739SP	FRYPOT, WITH INSULATION FQG80
		NATURAL GAS ORIFICES
	8103055	0-1999 FT. 2.04MM
	8103056	2000-3999 FT. 1.98MM
	8103057	4000-5999 FT. 1.94MM
		PROPANE (LPG) GAS ORIFICES
	8103059	0-1999 FT. 1.30MM
	8103061	2000-3999 FT. 1.98MM
	8103062	4000-5999 FT. 1.94MM
2	1082612	BURNER, CAST UNIVERSAL
3	2421385	SIDE, INSULATION BRACKET
4	8161192	INSULATION, FRYPOT SIDE TOP (USED WITH ITEM #3)
5	2205152	BRACKET, BURNER HE 60 CAST IRON
6	8090459	BOLT, 5/16-18 X 3/4 HX WASHER HD CS
7	2008748	SHIELD, LOWER HEAT H/E 60
8	8090449	SCREW, #10 x 1/2 PHIL. TR HD
9	2411386	BRACKET, MANIFOLD SPPT LH
10	2421386	BRACKET, MANIFOLD SPPT RH
11	2304091	BAFFLE, HE 60 BURNER
12	2306301	BRACKET, HD PILOT BURNER
13	8102072	MANIFOLD ASSEMBLY, GAS

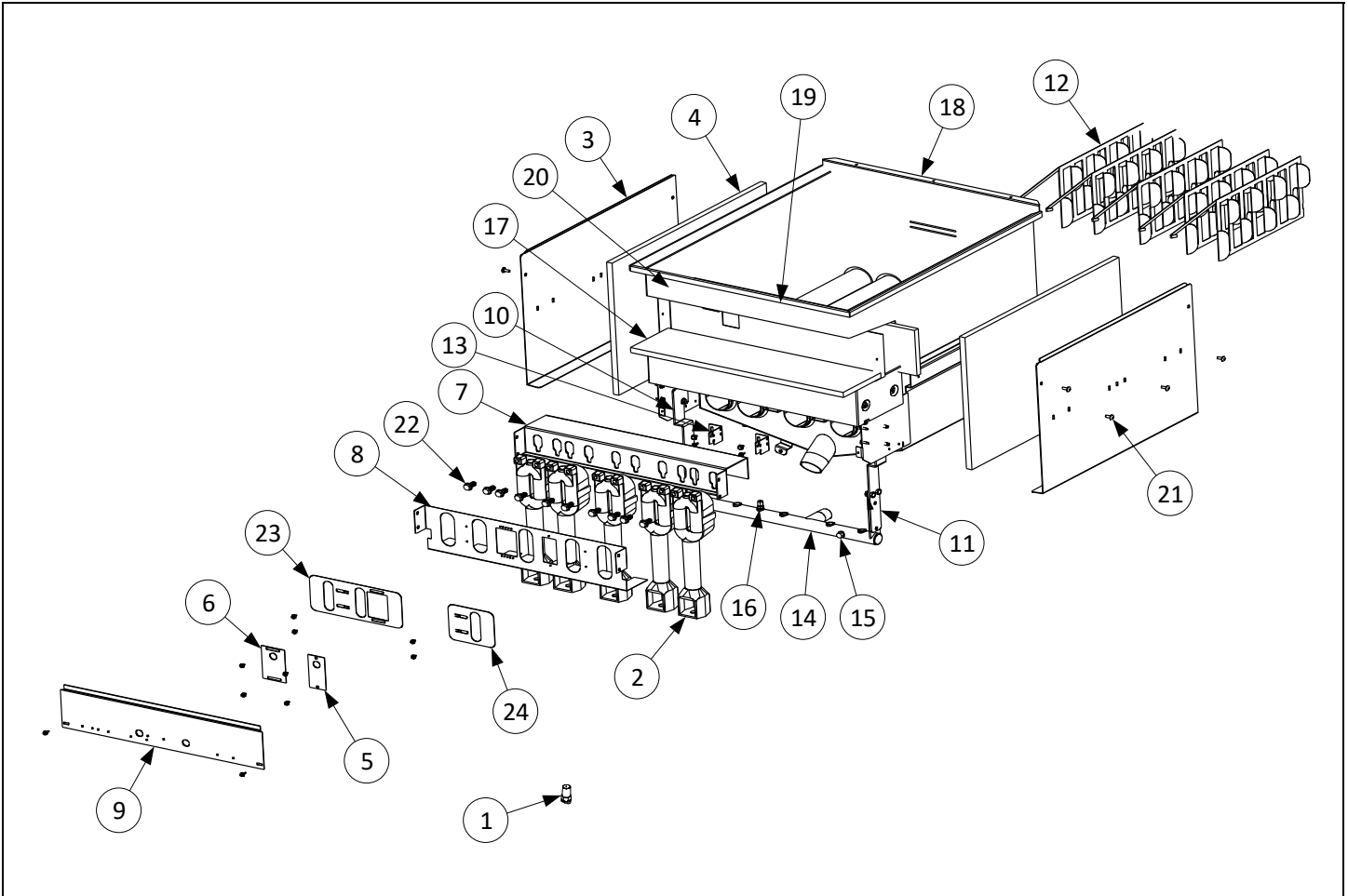
1.7.1 Frypot Components cont. FQG80T

ITEM	PART #	COMPONENT
14	8130154	PLUG, PIPE 1/8" NPT HX HD
15	8130340	ADAPTER, 1/8" NPT X 1/8" TUBING BRASS
16	8160921	INSULATION, HD60 FRYPOT BOX
17	130000738	FRYPOT W/A, (FQG80)
18	8160922	INSULATION, FRYPOT FRONT
19	130000751	BRACKET, INSULATION FRONT FQG80

* Not illustrated.

√ Recommended parts.

1.7.2 Frypot Components FQG100T



1.7.2 Frypot Components FQG100T

ITEM	PART #	COMPONENT
1	130000712SP	FRYPOT, WITH INSULATION (FQG100T)
		NATURAL GAS ORIFICES
	8103055	0-1999 FT. 2.04MM
	8103056	2000-3999 FT. 1.98MM
	8103057	4000-5999 FT. 1.94MM
		PROPANE (LPG) GAS ORIFICES
	8103059	0-1999 FT. 1.30MM
	8103061	2000-3999 FT. 1.98MM
	8103062	4000-5999 FT. 1.94MM
2	1082612	BURNER, CAST UNIVERSAL
3	2421385	SIDE, INSULATION BRACKET
4	8161192	INSULATION, FRYPOT SIDE TOP (USED WITH ITEM #3)
5	2208858	DOOR, HD50 IGNITOR
6	2208865	DOOR, HD60 IGNITOR ACCESS
7	2209905	BRACKET, HD60 BURNER MOUNTING
8	2209906	BOX, HD60 BURNER AIR
9	2008748	SHIELD, HE/60 LOWER HEAT
10	2411386	BRACKET, MANIFOLD SPPT LH
11	2421386	BRACKET, MANIFOLD SPPT RH
12	2304091	BAFFLE, HE60 BURNER
13	2306301	BRACKET, HD PILOT BURNER
14	8102072	MANIFOLD ASSY GAS

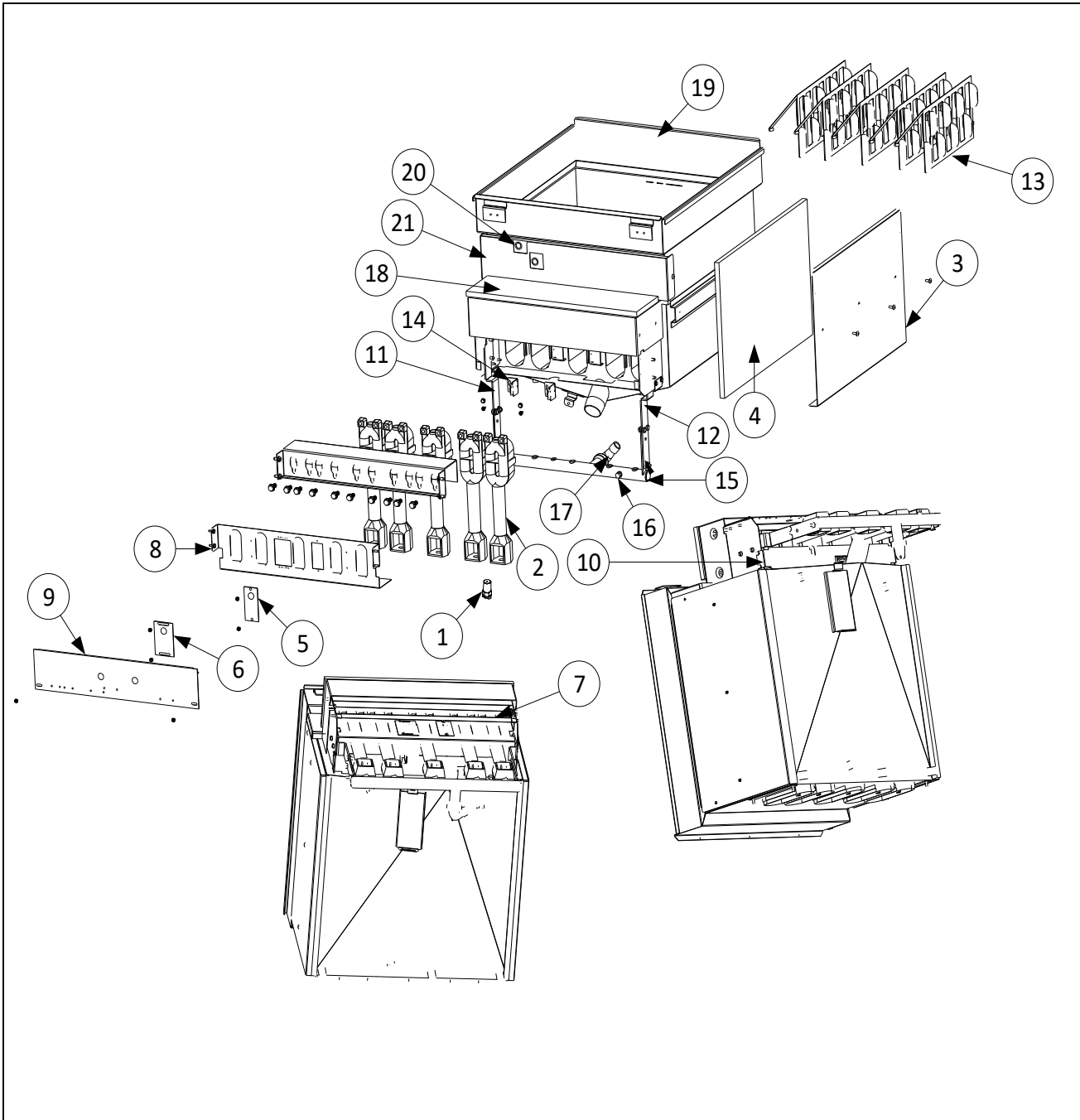
1.7.2 Frypot Components cont. FQG100T

ITEM	PART #	COMPONENT
15	8130154	PLUG, PIPE 1/8" NPT HX HD
16	8130340	ADAPTER, 1/8" NPT X 1/8" TUBING BRASS
17	8160921	INSULATION, HD60 FRYPOT BOX
18	130000711	FRYPOT W/A, (FQG100)
19	8161193	INSULATION, FRYPOT FRONT
20	130000718	BRACKET, INSULATION FRONT FQ100
21	8090449	SCREW, #10 x 1/2 PHIL. TR HD
22	8090459	BOLT, 5/16-18 X 3/4 HX WASHER HD CS
23	2400320	SHUTTER, LHDC65 LONG BURNER
24	2400319	SHUTTER, LHDC65 BURNER

* Not illustrated.

√ Recommended parts.

1.7.3 Frypot Components FQG120T



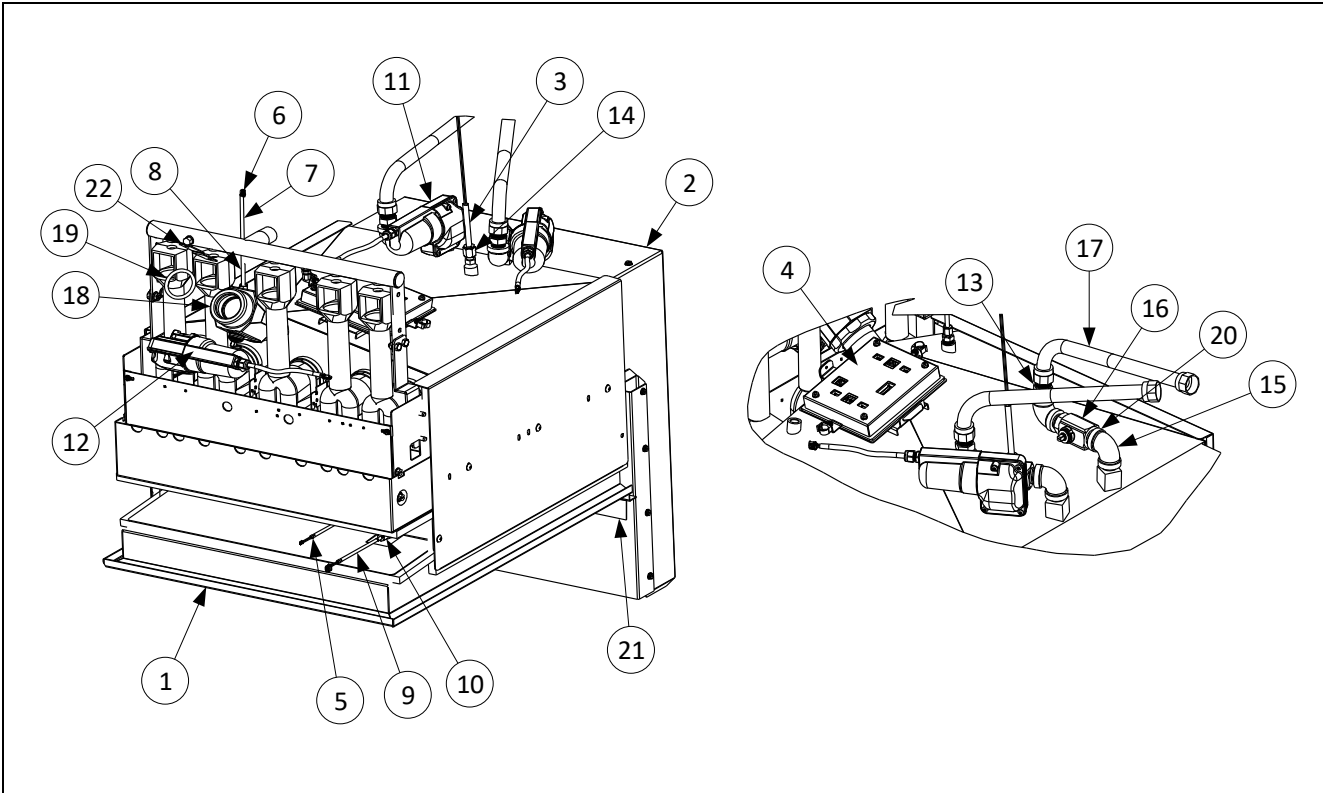
1.7.3 Frypot Components FQG120T cont.

ITEM	PART #	COMPONENT
	1088207SP	FRYPOT, WITH INSULATION (FQG120T)
1		NATURAL GAS ORIFICES
	8103055	0-1999 FT. 2.04MM
	8103056	2000-3999 FT. 1.98MM
	8103057	4000-5999 FT. 1.94MM
		PROPANE (LPG) GAS ORIFICES
	8103059	0-1999 FT. 1.30MM
	8103061	2000-3999 FT. 1.98MM
	8103062	4000-5999 FT. 1.94MM
2	1083629	BURNER, CAST UNIVERSAL
3	2421385	SIDE, INSULATION BRACKET
4	8161192	INSULATION, FRYPOT SIDE TOP (<i>USED WITH ITEM #3</i>)
5	2208858	DOOR, HD50 IGNITOR
6	2208865	DOOR, HD60 IGNITOR ACCESS
7	2209905	BRACKET, HD60 BURNER MOUNTING
8	2209906	BOX, HD60 BURNER AIR
9	2209948	SHIELD, HD60 LOWER HEAT
10	2209967	SHIELD, HD60 LOWER AIR
11	2411386	BRACKET, MANIFOLD SPPT LH
12	2421386	BRACKET, MANIFOLD SPPT RH
13	2602224	BAFFLE, 8 ROW BURNER
14	2306301	BRACKET, HD PILOT BURNER
15	8102072	MANIFOLD ASSY GAS
16	8130154	PLUG, PIPE 1/8" NPT HX HD
17	8130168	ELBOW, STREET 90° 3/4" X 3/4" NPT BM
18	8160921	INSULATION, HD60 FRYPOT BOX
19	8239600	FRYPOT (FQG120T)
20	8161193	INSULATION, FRYPOT FRONT
21	2401799	BRACKET, INSULATION FRONT

* Not illustrated.

√ Recommended parts.

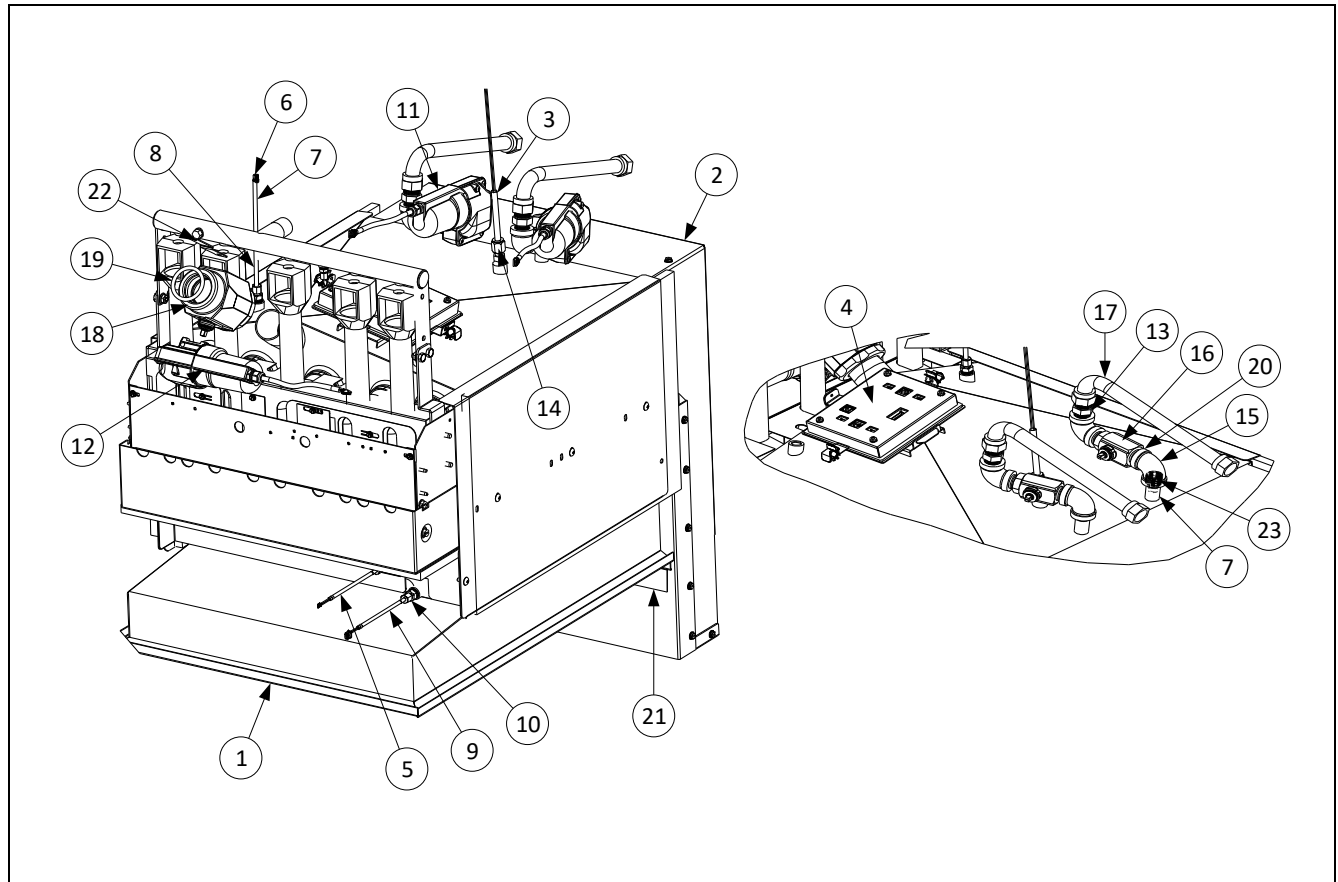
1.7.4 Frypot Assemblies and Associated Parts FQG80T



ITEM	PART #	COMPONENT
	130000740SP	FRYPOT ASSEMBLY (FQG80T)
1	130000739	FRYPOT ASSEMBLY, (FQG80)
2	1069273	FLUE ASSEMBLY, D60 GCI TALL
✓ 3	8262541	SWITCH ASSY, FLOAT
✓ 4	1089546SP	VIB BOARD ASSEMBLY (FQG80T)
✓ 5	8263287	PROBE, VIB (AUTO FILTRATION) RTD KIT
6	8075674	CONNECTOR, MOLEX 2MM 2 POS
7	8160536	SLEEVING, PVC COATED FIBERGLASS (.208" DIA.)
✓ 8	8263642	PROBE TEMP KIT
✓ 9	8263286	PROBE, ATO (TOP OFF) RTD KIT
10	8130617	FITTING, 3/16" CC X 1/4" (COMPRESSION FITTING USED IN PROBE KITS #5, #8 & #9)
✓ 11	8075809	ACTUATOR, ROTARY 24VDC LH BLUE (#1)
✓ 12	8075808	ACTUATOR, ROTARY 24VDC RH BLACK (#2)
13	8101668	ADAPTOR, MALE 5/8" OD X 1/2"
14	8130619	COMPRESSION FTNG, 1/4" NPTX 5/16" D (USED WITH ITEM #3)
15	8130062	ELBOW, 1/2" 90° BM
✓ 16	8103754	VALVE, 1/2" NPT RETURN
17	8101057	FLEXLINE, 5/8" OD X 13.00 LONG
✓ 18	8263817	VALVE, 1 1/2" NPT DRAIN KIT (INCLUDES 8160544 O-RING)
19	8160544	O-RING SEAL - DRAIN
20	8130022	NIPPLE, 1/2" X CLOSE NPT BM
21	2401893	STRIP, FLUECAP RETAINING FQ120
22	2401577	STRAP, FQ1814 DRAIN RETAINING
*	8158000	LOCTITE 567, TUBE 6 ML

* Not illustrated. ✓ Recommended parts.

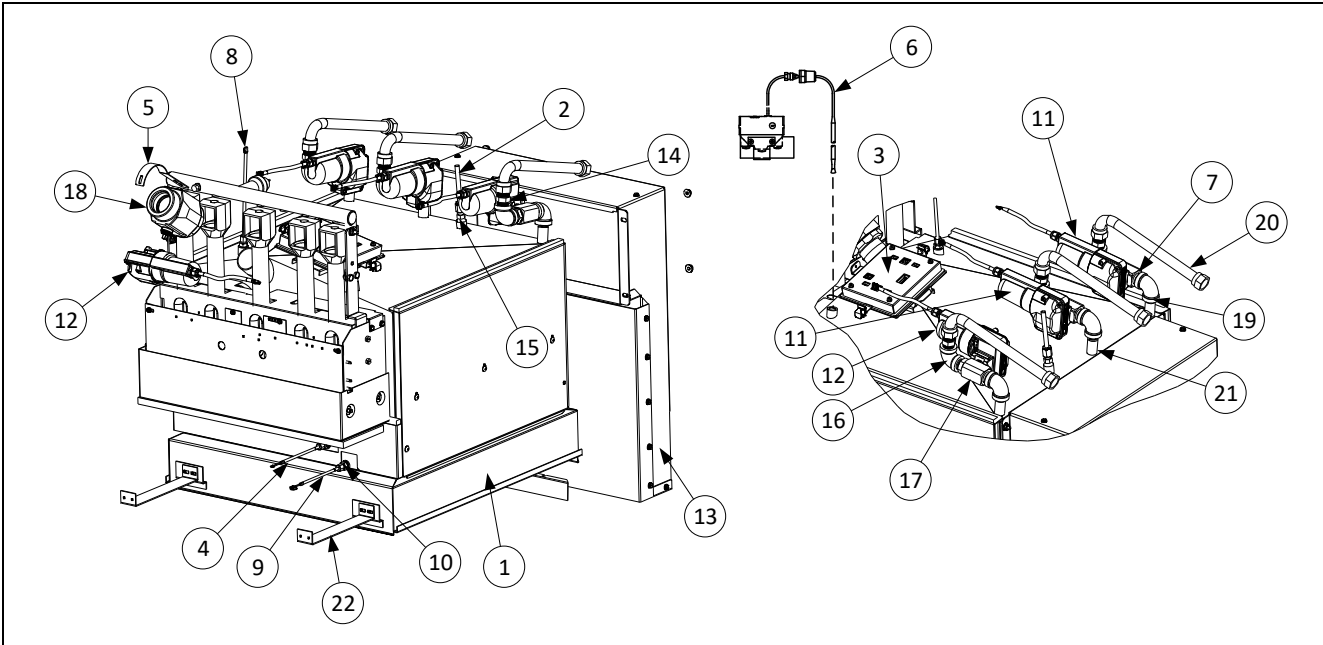
1.7.5 Frypot Assemblies and Associated Parts FQG100T



ITEM	PART #	COMPONENT
	130000719SP	FRYPOT ASSEMBLY (FQG100T)
1	130000712	FRYPOT ASSEMBLY, FQG100
2	1084062	FLUE ASSEMBLY, 90DEG FLUE HD65
√ 3	8262541	SWITCH ASSY, FLOAT
√ 4	1088480SP	BOARD ASSEMBLY FQG100T, VIB FQ120
√ 5	8263287	PROBE, VIB (AUTO FILTRATION) RTD KIT
6	8075674	CONNECTOR, MOLEX 2MM 2 POS
7	8130838	NIPPLE, ¼ NPT BM CLOSE
√ 8	8263642	PROBE TEMP KIT
√ 9	8263286	PROBE, ATO (TOP OFF) RTD KIT
10	8130617	FITTING, 3/16" CC X ¼" (COMPRESSION FITTING USED IN PROBE KITS #5, #8 & #9)
√ 11	8075809	ACTUATOR, ROTARY 24VDC LH BLUE (#1)
√ 12	8075808	ACTUATOR, ROTARY 24VDC RH BLACK (#2)
13	8101668	ADAPTOR, MALE ⅝" OD X ½"
14	8130619	COMPRESSION FTNG, 1/4" NPTX 5/16" D (USED WITH ITEM #3)
15	8130062	ELBOW, ½" 90° BM
√ 16	8103754	VALVE, ½" NPT RETURN
17	8101055	FLEXLINE, ⅝" OD X 11.50 LONG
√ 18	8263817	VALVE, 1½" NPT DRAIN KIT (INCLUDES 8160544 O-RING)
19	8160544	O-RING SEAL - DRAIN
20	8130022	NIPPLE, ½" X CLOSE NPT BM
21	2401893	STRIP, FLUECAP RETAINING FQ120
22	2401577	STRAP, FQ1814 DRAIN RETAINING
23	8130304	BUSHING, ½ X ¼ BM FLUSH
*	8158000	LOCTITE 567, TUBE 6 ML

* Not illustrated. √ Recommended parts.

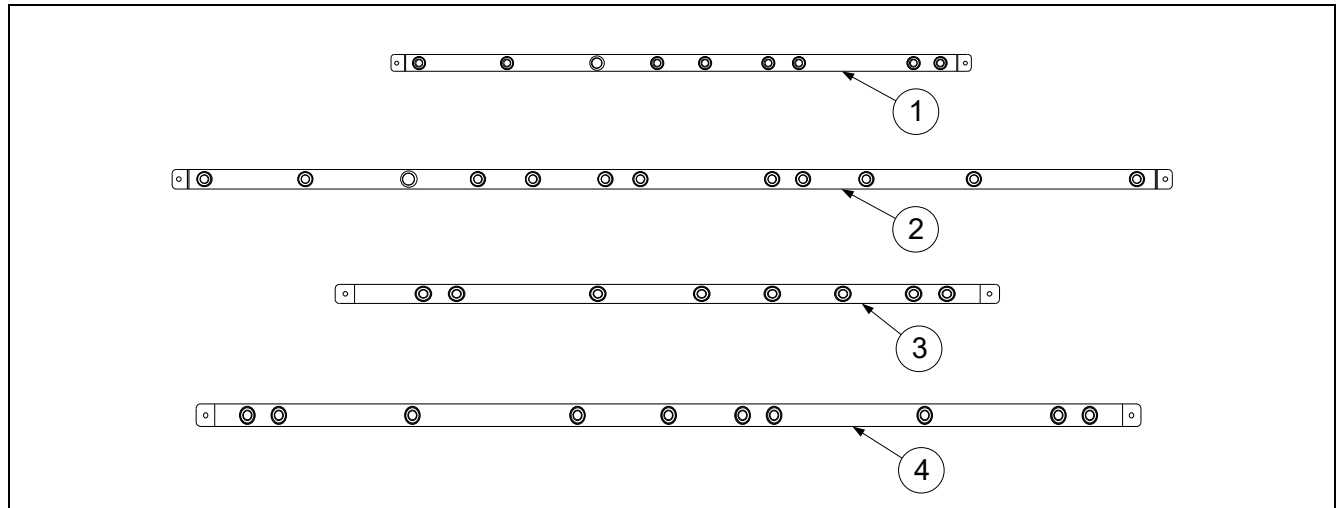
1.7.6 Frypot Assemblies and Associated Parts FQG120T



ITEM	PART #	COMPONENT
1	1088208SP	FRYPOT ASSEMBLY (FQG120)
√ 2	8262541	SWITCH ASSY, FLOAT
√ 3	1087514SP	VIB BOARD ASSEMBLY
√ 4	8263287	PROBE, VIB (AUTO FILTRATION) RTD KIT
*	8075953	CONNECTOR, MOLEX 20 PIN (<i>USED WITH ITEM #4</i>)
5	2209450	SUPPORT, DRAIN 3" TUBE
√ 6	8073516	THERMOSTAT, 435° OF MV HI-LIMIT
7	8130022	NIPPLE, ½" X CLOSE NPT
√ 8	8263642	PROBE, TEMPERATURE KIT
*	8075674	CONNECTOR, MOLEX 2MM 2-PIN (<i>USED WITH ITEM #8</i>)
*	8160536	SLEEVING, PVC COATED FIBERGLASS (.208" DIA.) (<i>USED WITH ITEM #8</i>)
√ 9	8263286	PROBE, ATO (TOPOFF) RTD KIT
10	8130617	FITTING, 3/16" CC X ¼" (<i>COMPRESSION FITTING USED IN PROBE KITS #4, #8 & #9</i>)
√ 11	8075809	ACTUATOR, ROTARY 24VDC BLUE (#1)
√ 12	8075808	ACTUATOR, ROTARY 24VDC BLACK (#2)
13	1088199	FLUE ASSY, FLUE FPLHD120
14	8101668	ADAPTOR, MALE ⅝" OD X ½"
15	8130619	COMPRESSION FTNG, 1/4" NPTX 5/16" D (<i>USED WITH ITEM #2</i>)
16	8130062	ELBOW, ½" 90° BM
√ 17	8103754	VALVE, ½" NPT RETURN
√ 18	8263817	VALVE, 1½" NPT DRAIN KIT (INCLUDES 8160544 O-RING)
*	8160544	O-RING SEAL - DRAIN
19	8130304	BUSHING, ½" X ¼" BM FLUSH
20	8101055	FLEXLINE, ⅝" OD X 11.50 LONG
21	8130838	NIPPLE, ¼" NPT BM CLOSE
22	2401947	BRACE, FRYPOT LOCATOR FQ120
*	8158000	LOCTITE 567, TUBE 6 ML

* Not illustrated. √ Recommended parts.

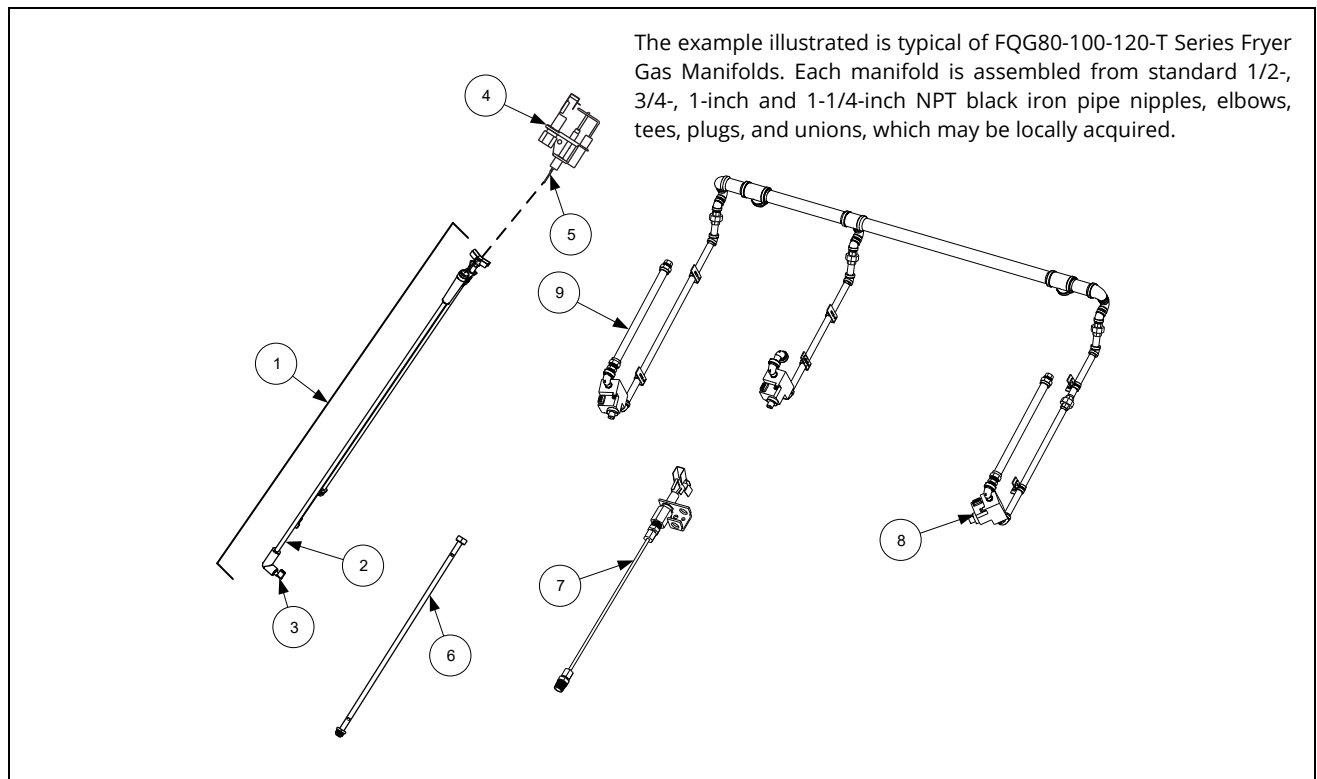
1.8 Oil Return Manifolds



ITEM	PART #	COMPONENT
1	8105059	MANIFOLD (2FQG120T)
2	8105086	MANIFOLD (3FQG120T)
3	8103118	MANIFOLD (2FQG80T & 2FQG100T)
4	8103121	MANIFOLD (3FQG80T & 3FQG100T)
*	8071105	HEATER STRIP 120V/25W 18"
*	8071420	HEATER STRIP, 120V/25W 36"
*	8071472	HEATER STRIP, 120V/40W 56"
*	8071408	HEATER STRIP, 120V/50W 70"
*	8130907	CAP, 15/16" VALVE

* Not illustrated

1.9 Gas Supply and Combustion System Components



1.9 Gas Supply and Combustion System Components cont.

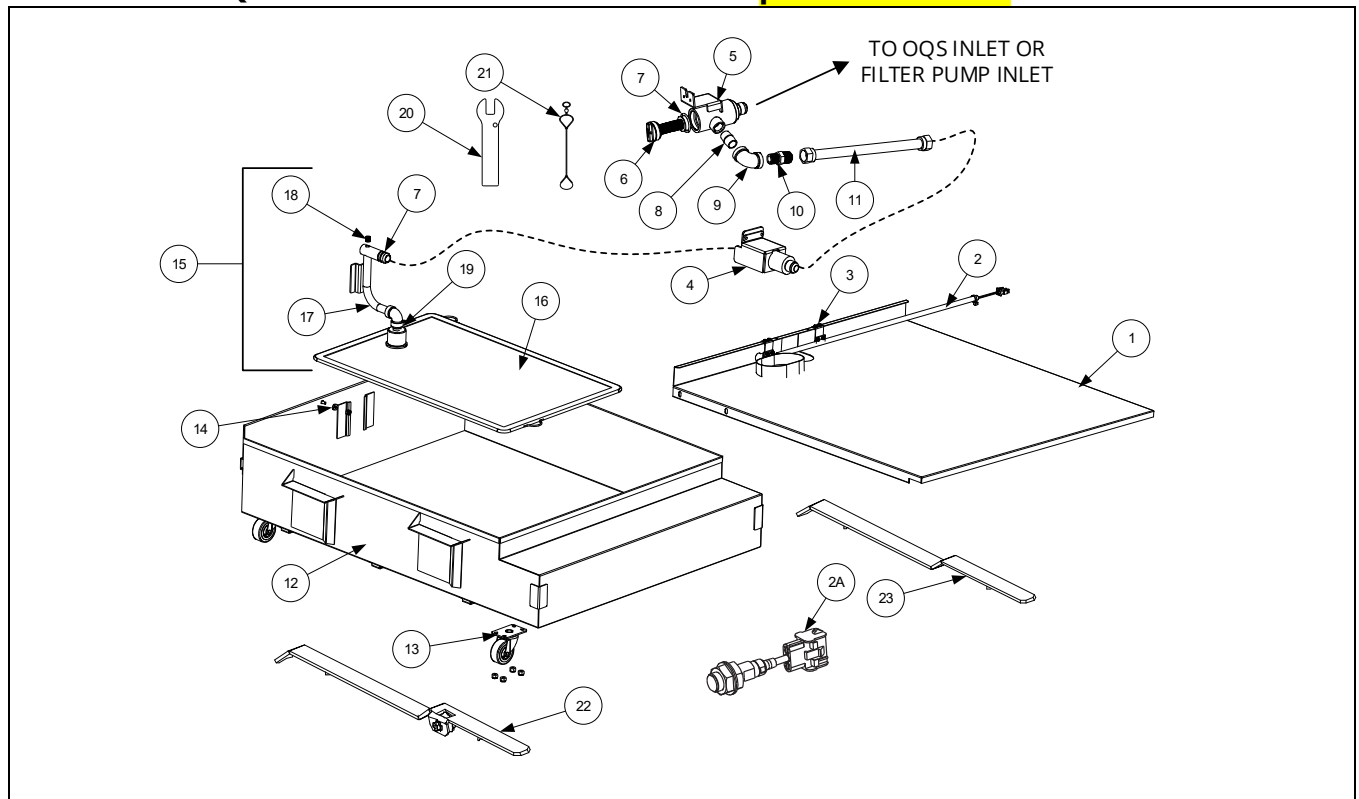
ITEM	PART #	COMPONENT
√ 1		PILOT ASSEMBLIES
	1061839SP	NATURAL GAS (G20, G25) ELECTRONIC IGNITION INCLUDES IGNITION CABLE NON-CE
	1061128SP	PROPANE (LP) (G30, G31) ELECTRONIC IGNITION INCLUDES IGNITION CABLE NON-CE
2	1067535SP	CABLE ASSY, IGNITION DEAN
3	8074375	CONNECTOR, 90 RAJAH
	8074384	CABLE, IGNITION DEAN
4	1081650SP	PILOT ASSY, NAT FP-TCF IGN (<i>INCLUDES FLAME SENSOR</i>)
	1081651SP	PILOT ASSY, LP FP-TCF IGN (<i>INCLUDES FLAME SENSOR</i>)
√ 5	8071310	FLAME SENSOR
*	W68C11	FLAME SENSE WIRE, 68C 39 26.0 67 69
6	8100705	TUBE, PILOT GASLINE ONE-PIECE ¼" X 23"
	8100703	TUBE, PILOT GASLINE ONE-PIECE ¼" X 20"
7	1066752SP	PILOT ASSEMBLY, TRAIL HE65
√ 8		VALVE, NON-CE GAS
	8073552	NATURAL GAS (G20, G25) HONEYWELL
	8073628	PROPANE GAS (LP) (G30, G31)
		GAS CONVERSION KITS
	8262937	CONVERSION KIT, VALVE, NATURAL (G20, G25) TO PROPANE (LP) (G30, G31)
	8262938	CONVERSION KIT, VALVE, PROPANE (LP) (G30, G31) TO NATURAL (G20, G25)
*	8100691	TUBE, ⅛" VENT
√ 9		FLEXLINES
	8101055	FLEXLINE, ⅝" OD X 11.50"
	8102542	FLEXLINE, ¾" OD X 18.50"

* Not illustrated.

√ Recommended parts.

1.10 Filtration System Components

1.10.1.1 FQG120 Filter Pan and Accessories **prior to 01/2022**

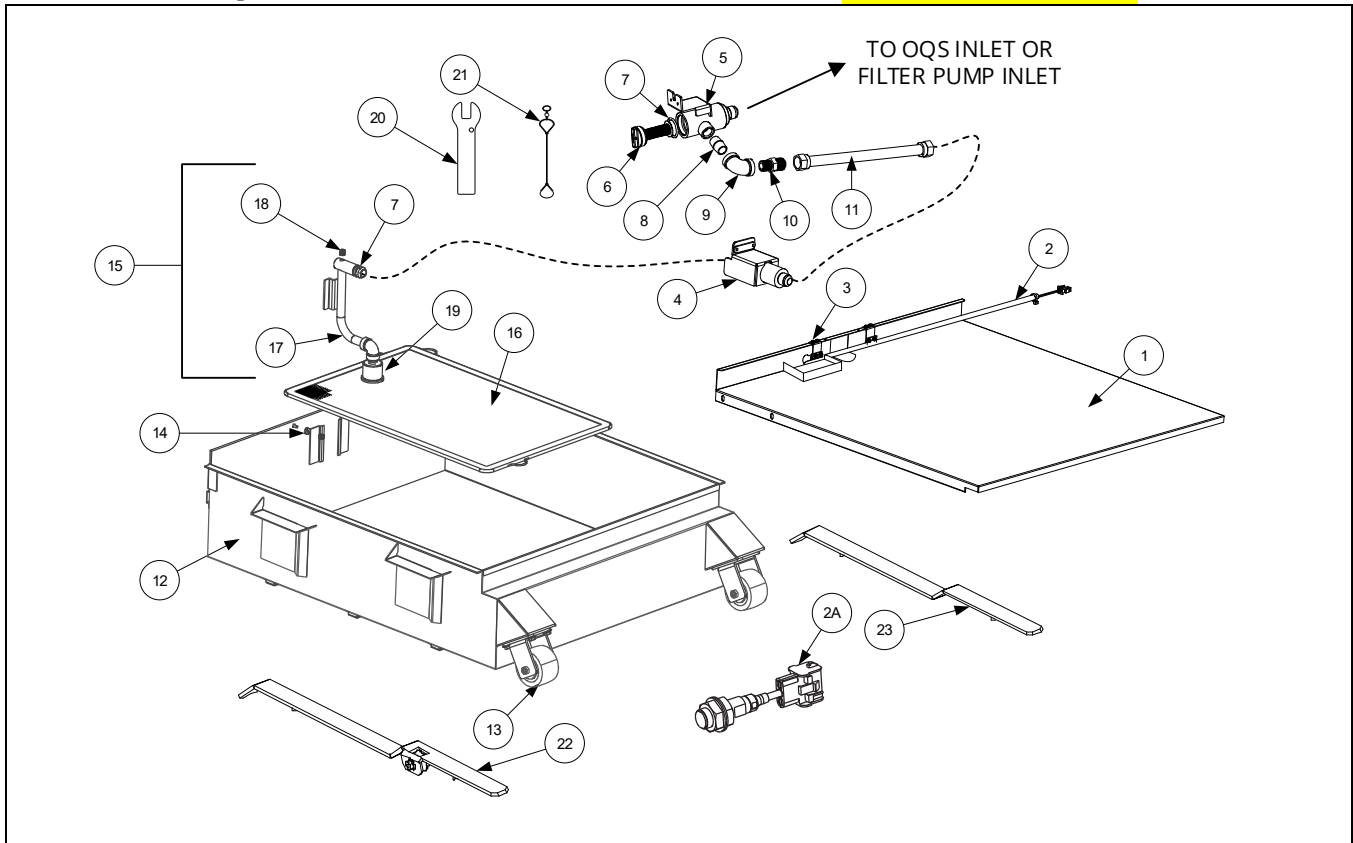


ITEM	PART #	COMPONENT
1	8239629	LID, FILTER PAN ROUND OPENING
√ 2	1088877SP	SENSOR ASSY, PAN (MAGNETIC)
2A	8263849	SENSOR ASS`Y, PAN (PROXIMITY SENSOR)
3	1088875SP	SUPPORT ASS'Y, PAN SENSOR
4	130000200	BRACKET W/A, FILTER SUCTION FQ (07/2021 TO CURRENT)
*	8239628	BRACKET W/A, FEMALE SUCTION FQ120 (PRIOR TO 07/2021)
5	8239650	BODY W/A, PRE-FILTER FQ120 LONG
√ 6	8239651	SCREEN, SUCTION LINE (USED WITH ITEM 5)
√ 7	8263666	KIT, O-RING FQ120 PAN/PRE-FLTR (INCLUDES 12-8160596[PAN], & 6-8161213[PRE-FLTR])
8	8130022	NIPPLE, ½" X CLOSE N.P.T. B.M.
9	8130062	ELBOW, ½" BLK 90 DEGREE
10	8101668	ADAPTOR, MALE 5/8" O.D. X ½"
11	8101055	FLEXLINE, 5/8" OD X 11.50 LONG
12	1088209SP	PAN ASSY, FILTER FQ120 SERVICE (PRIOR TO 01/2022) (REPLACE WITH 130000170SP ASSY)
13	8102805	CASTER, 2" FILTER PAN
14	8103007	MAGNET, 3.5LBS PULL RING
15	1088868SP	TUBE ASSY, SUCTION FQ120 ENVELOPE
16	8105080	LEAF, 14.5" X 22.5" FILTER
17	8239627	TUBE W/A, SUCTION
18	8130568	PLUG, ½" SOCKET HEAD PIPE
19	8130772	NIPPLE, ¾" X CLOSE NPT SS
20	2401086	WRENCH, PRE-FILTER CAP
21	8104167	LANYARD, FILTER SCREEN WRENCH
22	1088505	SLIDE W/A, FILTER PAN RT FQ120 (RIGHT)
23	8239548	SLIDE W/A, FILTER PAN FPLHD120 (LEFT)
*	8030543	ENVELOPE, FILTER LEAF 23"X30" (NON-MASTERFIL FILTER LEAF ENVELOPE) (FQG120)
*	SEE DESCRIPTION	FILTER ENVELOPES (FE2332X) CONTACT WWW.OILSOLUTIONSGROUP.COM OR CALL 888-459-2112

* Not illustrated.

√ Recommended parts

1.10.1.2 FQG120 Filter Pan and Accessories from 01/2022 to 05/2023

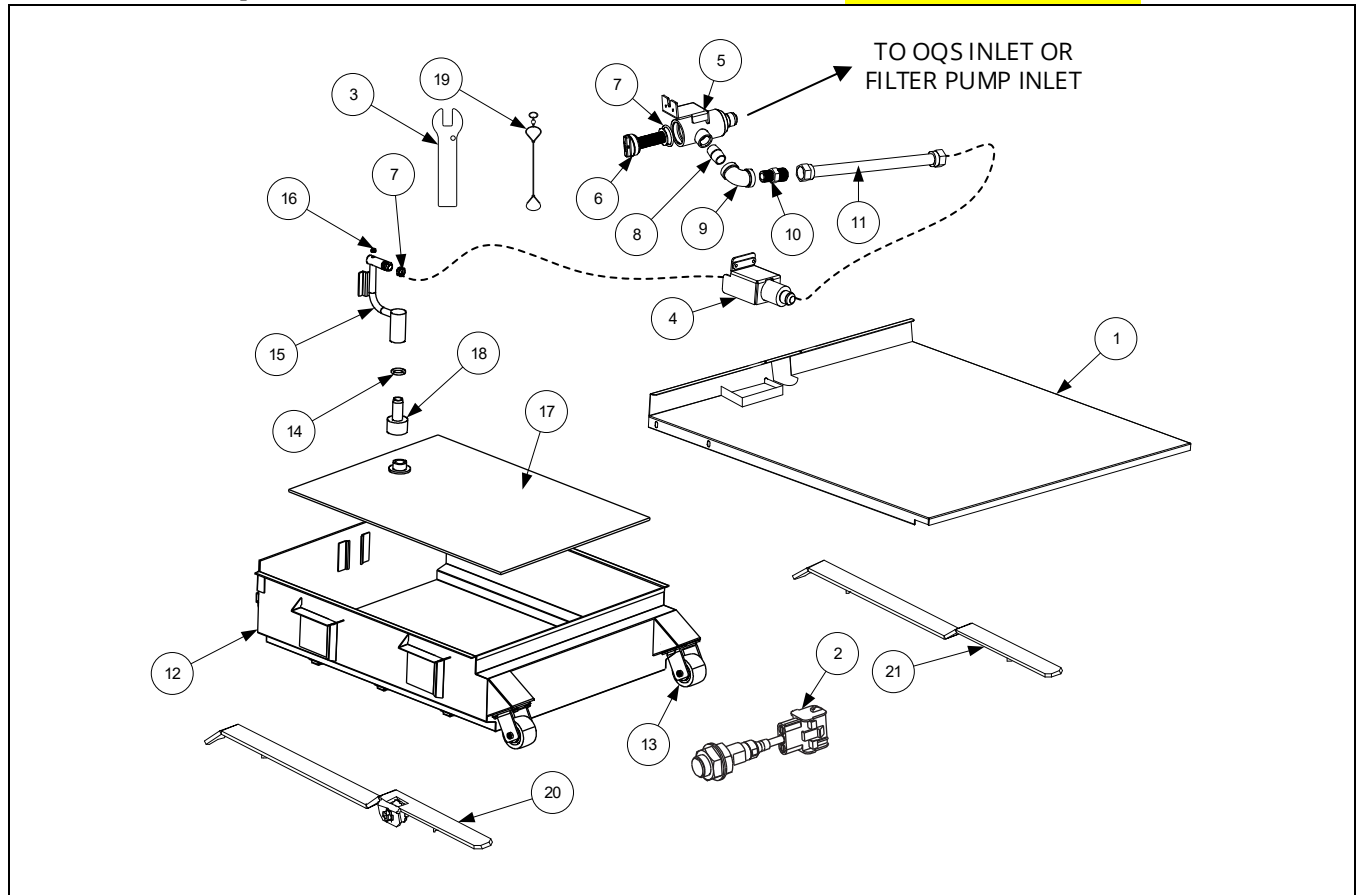


ITEM	PART #	COMPONENT
1	130000334	LID, FILTER PAN SQUARE OPENING
✓ 2	1088877SP	SENSOR ASSY, PAN (MAGNETIC)
2A	8263849	SENSOR ASS'Y, PAN (PROXIMITY SENSOR)
3	1088875SP	SUPPORT ASS'Y, PAN SENSOR
4	130000200	BRACKET W/A, FILTER SUCTION FQ
5	8239650	BODY W/A, PRE-FILTER FQ120 LONG
✓ 6	8239651	SCREEN, SUCTION LINE (<i>USED WITH ITEM 5</i>)
✓ 7	8263666	KIT, O-RING FQ120 PAN/PRE-FLTR (INCLUDES 12-8160596[PAN], & 6-8161213[PRE-FLTR])
8	8130022	NIPPLE, ½" X CLOSE N.P.T. B.M.
9	8130062	ELBOW, ½" BLK 90 DEGREE
10	8101668	ADAPTOR, MALE 5/8" O.D. X ½"
11	8101055	FLEXLINE, 5/8" OD X 11.50 LONG
12	130000979	PAN ASSY, FILTER FQ120 SERVICE (INCLUDES ITEMS 13 & 14) SERIALS 2201-2212
	130000980	PAN ASSY, FILTER FQ120 SERVICE (INCLUDES ITEM 13) SERIALS 2301-CURRENT
13	8104821	CASTER, 4" RIGID
14	8103007	MAGNET, 3.5LBS PULL RING
15	130000167SP	TUBE ASSY, SUCTION FQ120 ENVELOPE
16	8105080	LEAF, 14.5" X 22.5" FILTER
17	130000168	TUBE W/A, SUCTION
18	8130568	PLUG, ½" SOCKET HEAD PIPE
19	8130772	NIPPLE, 3/8" X CLOSE NPT SS
20	2401086	WRENCH, PRE-FILTER CAP
21	8104167	LANYARD, FILTER SCREEN WRENCH
22	1088505	SLIDE W/A, FILTER PAN RT FQ120 (<i>RIGHT</i>)
23	8239548	SLIDE W/A, FILTER PAN FPLHD120 (<i>LEFT</i>)
*	SEE DESCRIPTION	FILTER ENVELOPES (FE2332X) CONTACT WWW.OILSOLUTIONSGROUP.COM OR CALL 888-459-2112

* Not illustrated.

✓ Recommended parts

1.10.1.3 FQG120 Filter Pan and Accessories from 06/2023 to 12/2023

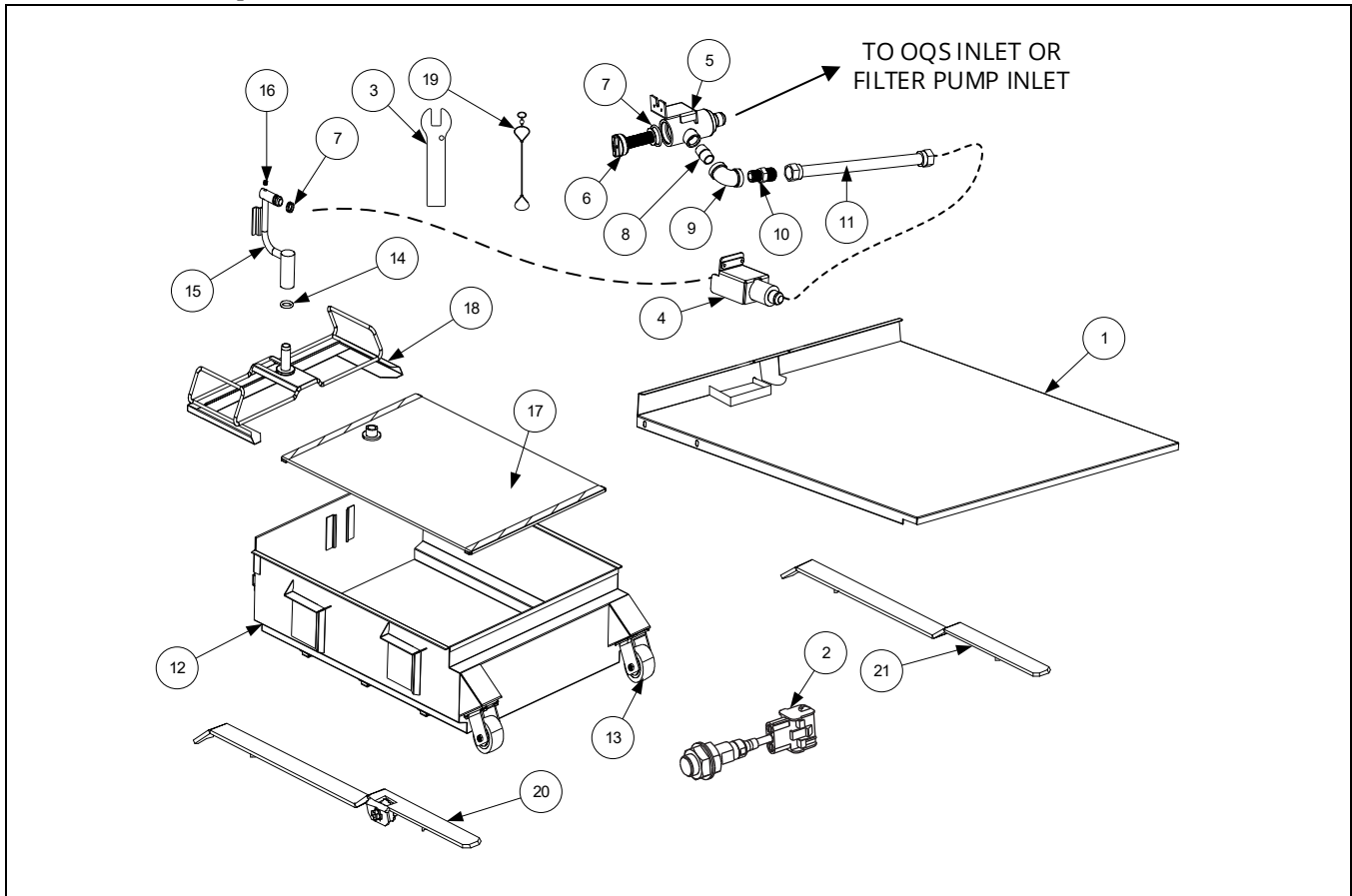


ITEM	PART #	COMPONENT
1	130000334	LID, FILTER PAN SQUARE OPENING
√ 2	8263849	SENSOR ASS`Y, PAN (PROXIMITY SENSOR)
3	2401086	WRENCH, PRE-FILTER CAP
4	130000200	BRACKET W/A, FILTER SUCTION FQ
5	8239650	BODY W/A, PRE-FILTER FQ120 LONG
√ 6	8239651	SCREEN, SUCTION LINE (<i>USED WITH ITEM 5</i>)
√ 7	8263666	KIT, O-RING FQ120 PAN/PRE-FLTR (INCLUDES 12-8160596[PAN], & 6-8161213[PRE-FLTR])
8	8130022	NIPPLE, ½" X CLOSE N.P.T. B.M.
9	8130062	ELBOW, ½" BLK 90 DEGREE
10	8101668	ADAPTOR, MALE 5/8" O.D. X ½"
11	8101055	FLEXLINE, ⅝" OD X 11.50 LONG
12	130000980	PAN ASSY, FILTER FQ120 SERVICE (INCLUDES ITEM 13) SERIALS 2301-CURRENT
13	8104821	CASTER, 4" RIGID
14	130000779	O-RING, .210X.975X1.395
15	130001473SP	TUBE ASSY, SUCTION FQ120 ENVELOPE
16	8130568	PLUG, ⅜" SOCKET HEAD PIPE
17	130000982	SCREEN W/A FQG120 W/ EDGING
18	130001215	ADAPTER, MASTERFIL SCREEN W/GROOVE
19	8104167	LANYARD, FILTER SCREEN WRENCH
20	1088505	SLIDE W/A, FILTER PAN RT FQ120 (<i>RIGHT</i>)
21	8239548	SLIDE W/A, FILTER PAN FPLHD120 (<i>LEFT</i>)
*	SEE DESCRIPTION	FILTER ENVELOPES (FE2332X) CONTACT WWW.OILSOLUTIONSGROUP.COM OR CALL 888-459-2112

* Not illustrated.

√ Recommended parts

1.10.1.4 FQG120 Filter Pan and Accessories from 12/2023 to current

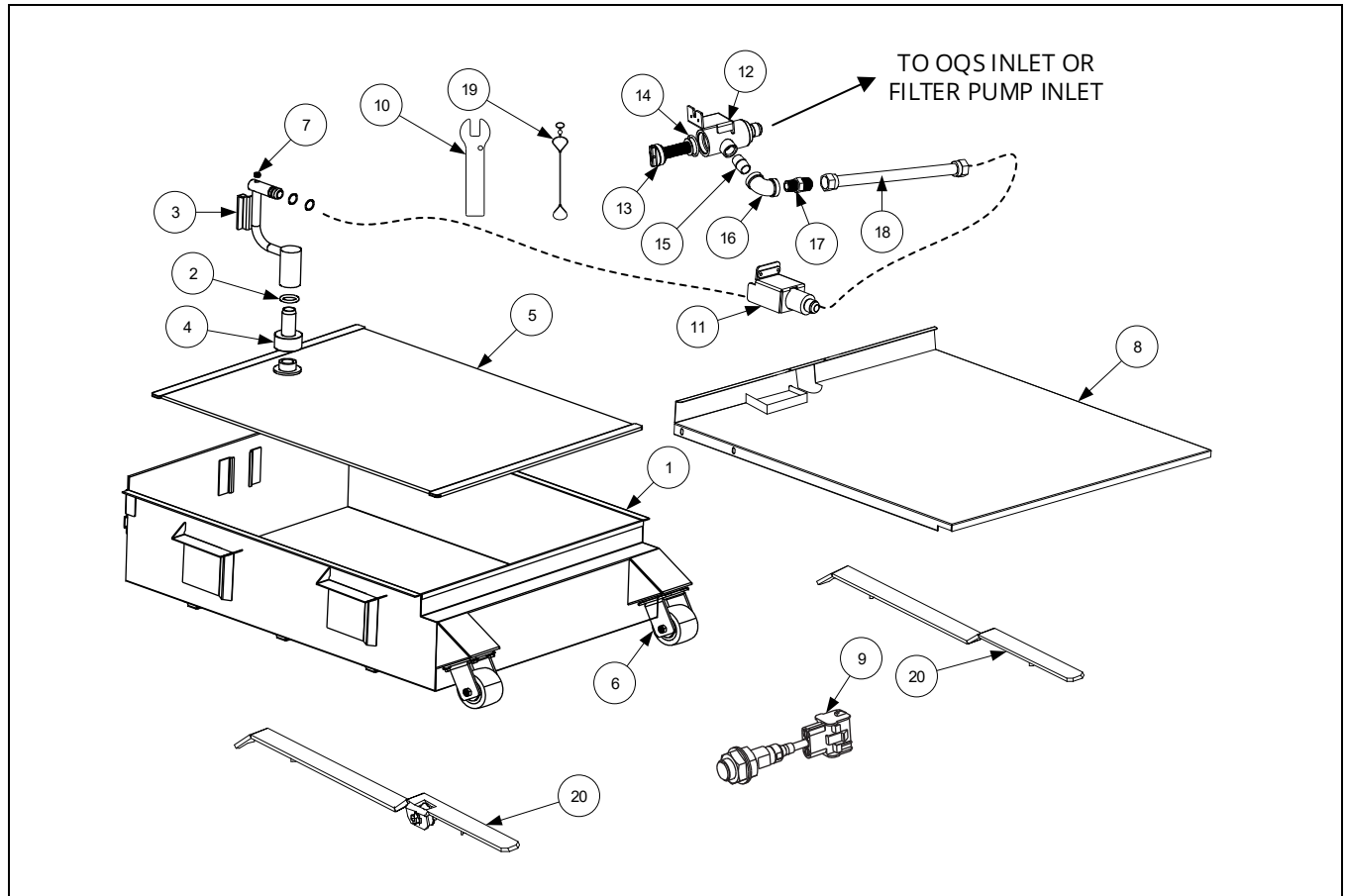


ITEM	PART #	COMPONENT
1	130000334	LID, FILTER PAN SQUARE OPENING
✓ 2	8263849	SENSOR ASS`Y, PAN (PROXIMITY SENSOR)
3	2401086	WRENCH, PRE-FILTER CAP
4	130000200	BRACKET W/A, FILTER SUCTION FQ
5	8239650	BODY W/A, PRE-FILTER FQ120 LONG
✓ 6	8239651	SCREEN, SUCTION LINE (<i>USED WITH ITEM 5</i>)
✓ 7	8263666	KIT, O-RING FQ120 PAN/PRE-FLTR (INCLUDES 12-8160596[PAN], & 6-8161213[PRE-FLTR])
8	8130022	NIPPLE, ½" X CLOSE N.P.T. B.M.
9	8130062	ELBOW, ½" BLK 90 DEGREE
10	8101668	ADAPTOR, MALE 5/8" O.D. X ½"
11	8101055	FLEXLINE, 5/8" OD X 11.50 LONG
12	130000980	PAN ASSY, FILTER FQ120 SERVICE (INCLUDES ITEM 13) SERIALS 2301-CURRENT
13	8104821	CASTER, 4" RIGID
14	130000779	O-RING, .210X.975X1.395
15	130001473SP	TUBE ASSY, SUCTION FQ120 ENVELOPE
16	8130568	PLUG, ⅜" SOCKET HEAD PIPE
17	130001457	SCREEN W/A FQG120 W/ EDGING
18	130001026	FRAME W/A/ SANA GRID FQ120 MASTERFIL
19	8104167	LANYARD, FILTER SCREEN WRENCH
20	1088505	SLIDE W/A, FILTER PAN RT FQ120 (RIGHT)
21	8239548	SLIDE W/A, FILTER PAN FPLHD120 (LEFT)
*	SEE DESCRIPTION	FILTER ENVELOPES (FE2332X) CONTACT WWW.OILSOLUTIONSGROUP.COM OR CALL 888-459-2112

* Not illustrated.

✓ Recommended parts

1.10.1.5 FQG100 Filter Pan and Accessories

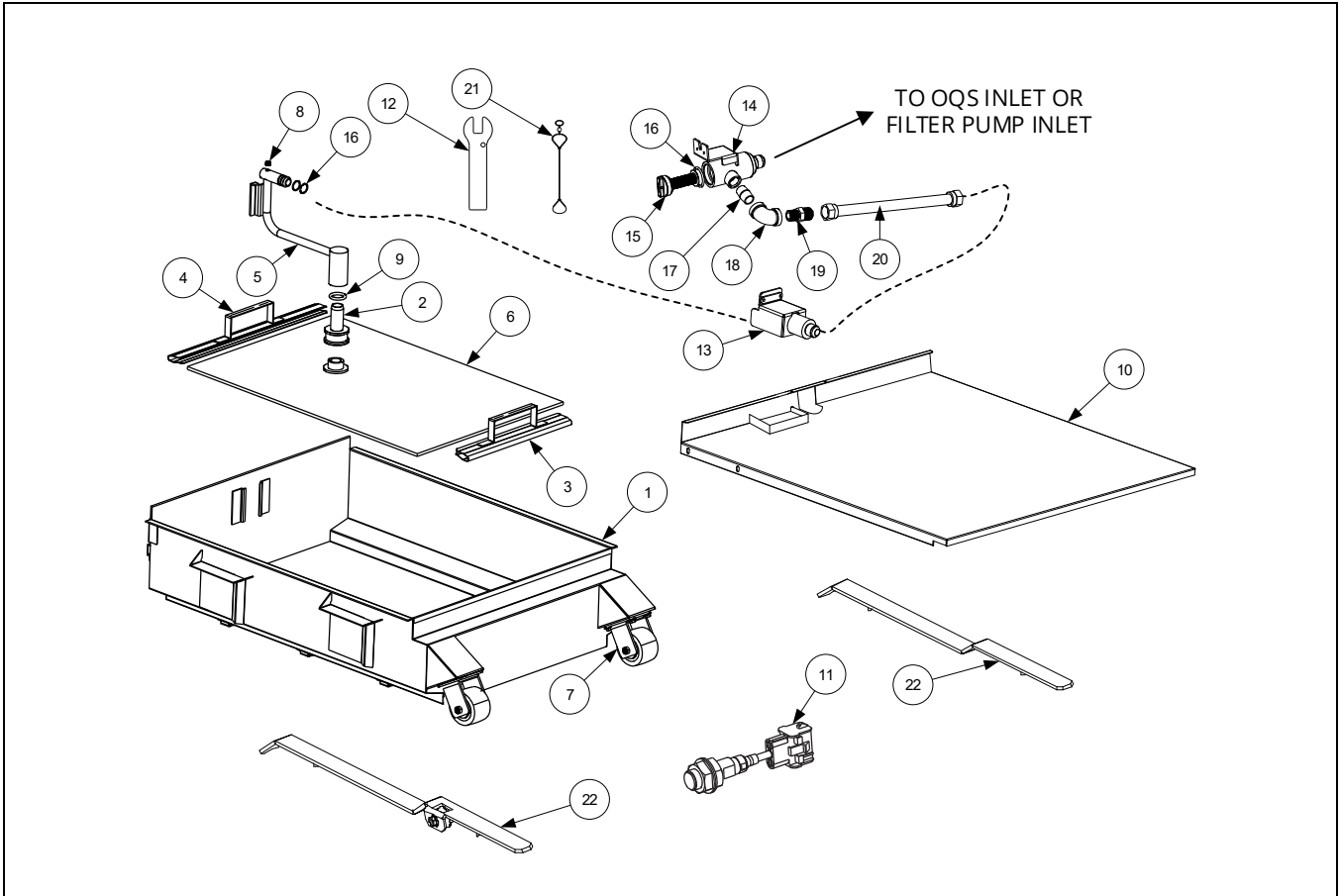


ITEM	PART #	COMPONENT
	130000706	PAN ASSY, FILTER FQ100
1	130000713	PAN W/A, FILTER FQ100 ENVELOPE
2	130000779	O-RING, .210X.975X1.395
3	130001473SP	TUBE W/A, SUCTION FQ120 MASTERFIL
4	130001215	ADAPTER, MASTERFIL SCREEN W/GROOVE
5	130001457	SCREEN W/A, FQ120 W/EDGING
6	8104821	CASTER, 4" RIGID
7	8130989	PLUG, 1/8" NPT SOCKET-HEAD .250
8	130000707	LID, FILTER PAN FQG100
√ 9	8263849	SENSOR ASS`Y, PAN (PROXIMITY SENSOR)
10	2401086	WRENCH, PRE-FILTER CAP
11	130000200	BRACKET W/A, FILTER SUCTION FQ
12	8239650	BODY W/A, PRE-FILTER FQ120 LONG
√ 13	8239651	SCREEN, SUCTION LINE (USED WITH ITEM 5)
√ 14	8263666	KIT, O-RING FQ120 PAN/PRE-FLTR (INCLUDES 12-8160596[PAN], & 6-8161213[PRE-FLTR])
15	8130022	NIPPLE, 1/2" X CLOSE N.P.T. B.M.
16	8130062	ELBOW, 1/2" BLK 90 DEGREE
17	8101668	ADAPTOR, MALE 5/8" O.D. X 1/2"
18	8101055	FLEXLINE, 5/8" OD X 11.50 LONG
19	8104167	LANYARD, FILTER SCREEN WRENCH
20	8233347	FRAME W/A, SLIDE BASE
*	SEE DESCRIPTION	FILTER ENVELOPES (FE2332X) CONTACT WWW.OILSOLUTIONSGROUP.COM OR CALL 888-459-2112

* Not illustrated.

√ Recommended parts

1.10.1.6 FQG80 Filter Pan and Accessories

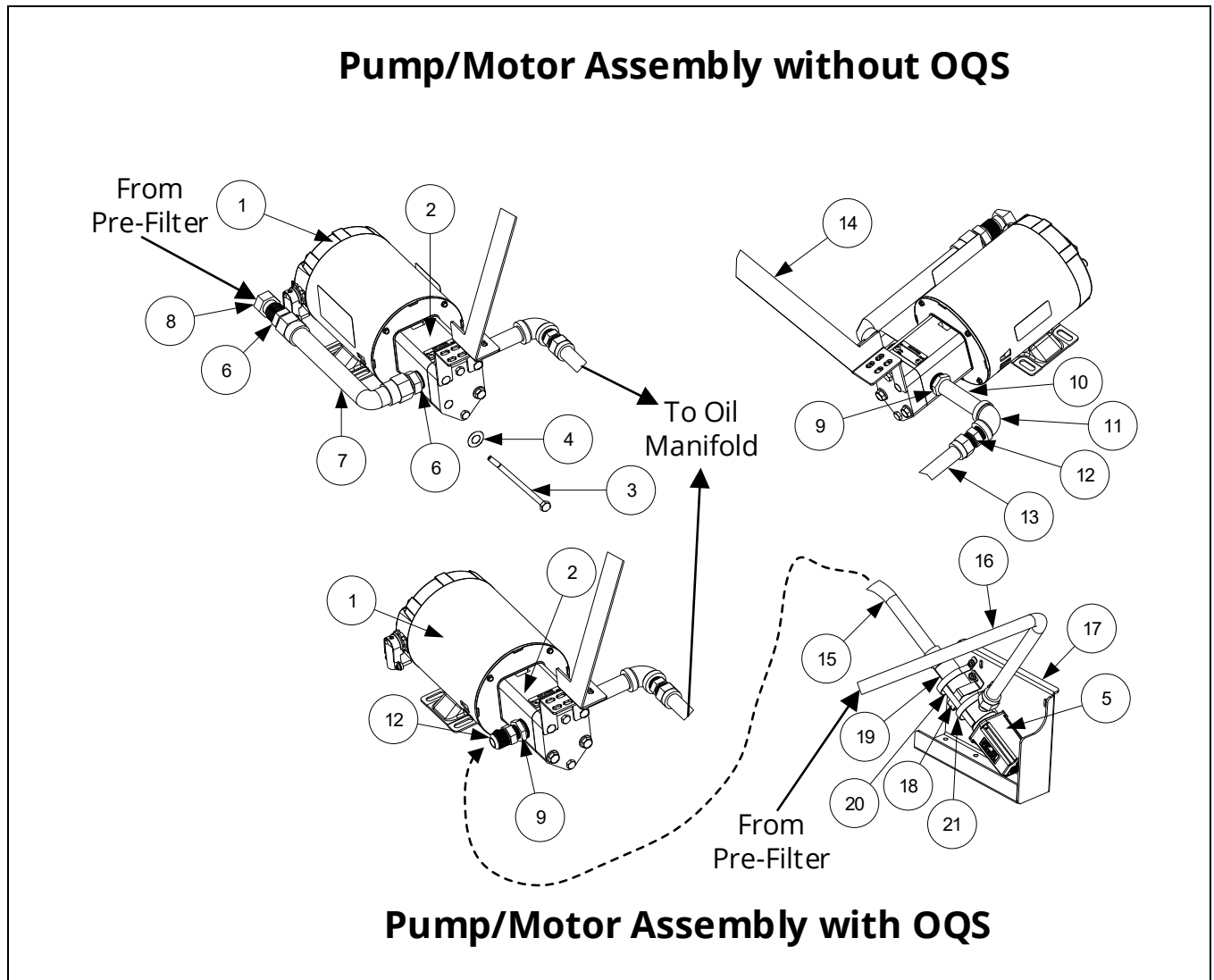


ITEM	PART #	COMPONENT
	130000757	PAN ASSY, FILTER FQG80
1	130000756	PAN W/A, FILTER FQG80
2	130001215	ADAPTER, MASTERFIL SCREEN W/GROOVE
3	130001465	CLIP W/A, MASTERFIL SCREEN 12" SECONDARY
4	130001469	CLIP W/A, MASTERFIL SCREEN 17" PRIMARY
5	130001471SP	TUBE ASSY, SUCTION FQG80/100 MASTERFIL
6	130169903	SCREEN, OIL SOLUTIONS GROUP W/HANDLES 17X26
7	8104821	CASTER, 4" RIGID
8	8130989	PLUG, 1/8" NPT SOCKET-HEAD .250
9	130000779	O-RING, .210X.975X1.395
10	130000707	LID, FILTER PAN FQG100
√ 11	8263857	SENSOR ASS`Y, PAN FQ80 (PROXIMITY SENSOR)
12	2401086	WRENCH, PRE-FILTER CAP
13	130000200	BRACKET W/A, FILTER SUCTION FQ
14	8239650	BODY W/A, PRE-FILTER FQ120 LONG
√ 15	8239651	SCREEN, SUCTION LINE (<i>USED WITH ITEM 5</i>)
√ 16	8263666	KIT, O-RING FQ120 PAN/PRE-FLTR (INCLUDES 12-8160596[PAN], & 6-8161213[PRE-FLTR])
17	8130022	NIPPLE, 1/2" X CLOSE N.P.T. B.M.
18	8130062	ELBOW, 1/2" BLK 90 DEGREE
19	8101668	ADAPTOR, MALE 5/8" O.D. X 1/2"
20	8101055	FLEXLINE, 3/8" OD X 11.50 LONG
21	8104167	LANYARD, FILTER SCREEN WRENCH
22	8239548	SLIDE W/A, FILTER PAN FPLHD120
*	SEE DESCRIPTION	FILTER ENVELOPES (FE1828X) CONTACT WWW.OILSOLUTIONSGROUP.COM OR CALL 888-459-2112

* Not illustrated.

√ Recommended parts

1.10.2 Filter Pump and Accessories



ITEM	PART #	COMPONENT
√ 1		MOTOR AND GASKET KIT
	8261785	100V 50/60 HZ
	8261712	115V 50/60 HZ
	8261756	208V 50/60 HZ
	8261270	220-240V 50/60 HZ
	8261755	250V 50/60 HZ
*	1088929	WIRING ASSEMBLY, MOTOR FQG120
√ 2	8263192	PUMP & GASKET KIT, 8 GPM (INCLUDES 8160093, 8091020 & 8090194)
	8160093	GASKET, PUMP/MOTOR
3	8091020	CAP SCREW, 5/16-INCH-18 5.00" NC HEX (CONNECTS PUMP TO MOTOR) (USE 8090194 WASHERS)
4	8090194	WASHERS
*	8071105	HEATER STRIP ASSEMBLY, 100-120V 25W 18"
*	8071098	HEATER STRIP ASSEMBLY, 208-250V 25W 18"
5	8263292	SENSOR, FILTERQUICK OQS REPLACEMENT
6	8105094	ADAPTOR, 3/4" ID X 3/4" M BLK OX
7	8105092	FLEXLINE, 3/4" ID X 21.00"
8	8103160	ADAPTOR, 1/2" NPT X 15/16

* Not illustrated.

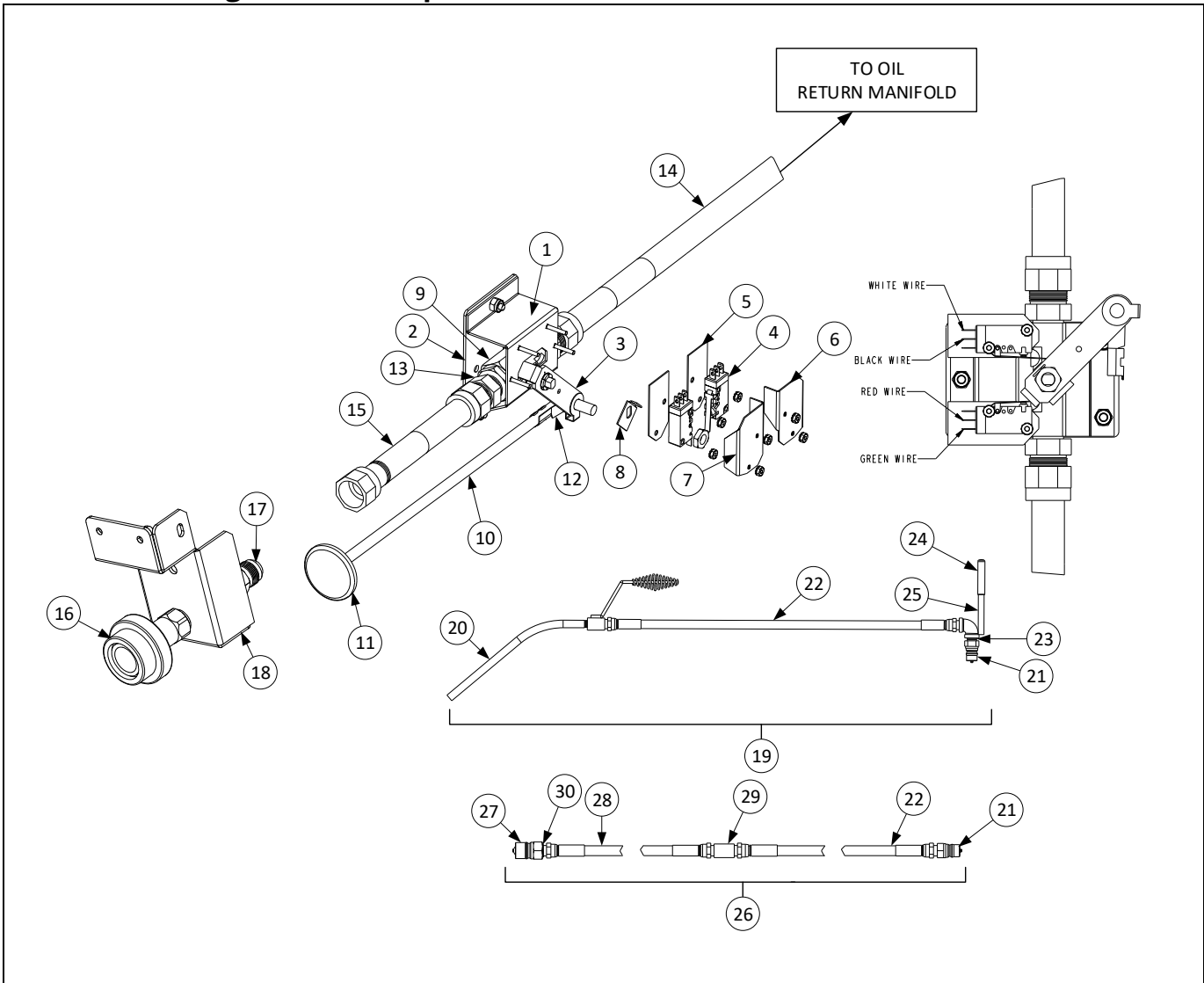
√ Recommended parts

1.10.2 Filter Pump and Accessories cont.

ITEM	PART #	COMPONENT
9	8130031	BUSHING, HX 3/4" NPT X 1/2" BM
10	8130093	NIPPLE, 1/2" X 4" N.P.T. B.M.
11	8130062	ELBOW, 1/2" 90° BM
12	8101668	ADAPTER, 5/8" TO 1/2" NPT MALE
13	8101055	FLEXLINE, 5/8" OD X 11.50 LONG
14	2401946	BRACKET, PUMP MOTOR FQ120
15	8101068	FLEX LINE, 5/8" OD X 21.50 LONG
16	8101069	FLEXLINE, 5/8" X 29.50" LONG
17	1088716SP	MOUNT ASSY, OQS SENSOR
18	2401910	RETAINER, OQS SENSOR
19	1088975SP	HEATER ASSY OQS 4" 120V/20W
	130000839SP	HEATER ASSEMBLY, OQS 4" 240V/20W
20	8161211	INSULATION, OQS HEATER STRIP
21	2401969	STRAP, INSULATION OQS

* Not illustrated. ✓ Recommended parts.

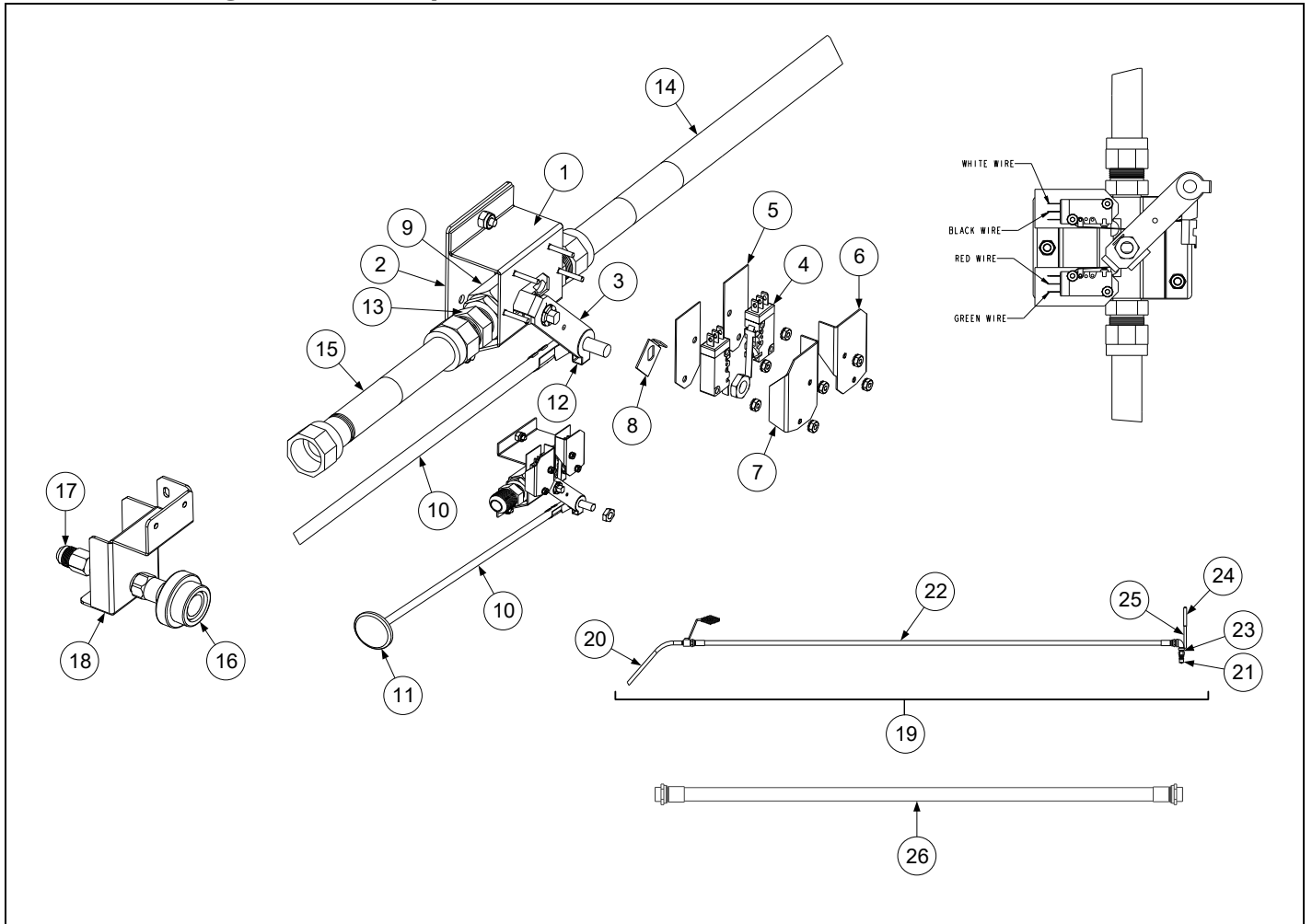
1.10.3 Plumbing Front Oil Dispose/Filtration



1.10.3 Plumbing Front Oil Dispose/Filtration cont.

ITEM	PART #	COMPONENT
1	1085922	STUD ASSY, WASTE VALVE
2	1088882	PLATE ASS'Y, MOUNTNG DISPOSE
3	2401917	HANDLE, VALVE FRONT DISPOSE
4	8074936	MICROSWITCH, GOLD SEALED
5	8160220	INSULATION, RF SWITCH
6	9012348	COVER, DV SAFETY SWITCH
7	9022348	COVER, DV SAFETY SWITCH
8	9002935	RETAINER, NUT RETURN VALVE
9	8100278	VALVE, ½" BALL
10	8239297	HANDLE, PUSH/PULL BULK OIL
11	8161203	CAP, OIL DISPOSE HANDLE
12	8090657	CLIP, CLEVIS ROD RIGHT END
13	8101668	ADAPTOR, MALE ⅝" OD X ½"
14	8101068	FLEX LINE, ⅝" OD X 21.50"
15	8101680	FLEX LINE ⅝" OD X 6.50"
16	8100490	QUICK DISCONNECT ½" FEMALE
17	8101669	ADAPTER, FEMALE ⅝" OD X ½"
18	8239608	BRACKET W/A, FRONT DISPOSE FQ2120
19	1085386SP	HOSE ASSY, WASH DOWN 10'
20	1061454	NOZZLE ASSY, W/HANDLE
21	8100487	QUICK DISCONNECT, ½" MALE
22	8102379	HOSE, 107½" X ½" X ½"
23	8130022	NIPPLE, ½" X CLOSE NPT BM
24	8160631	CAP, ½" X 3" RED VINYL
25	8237153	HANDLE W/A, WASH DOWN HOSE
26	1088932SP	HOSE ASS'Y, BULK DISPOSE
27	130010003	FITTING, 3/4" QUICK DISCONNECT DARPRO
28	8101434	HOSE ASSEMBLY PF - STANDARD
29	8130608	COUPLING, 1/2 NPT BM FULL
30	8130763	BUSHING, 3/4OD X 1/2ID NPT FLUSH

1.10.4 Plumbing Front Oil Dispose/Filtration FQG80T

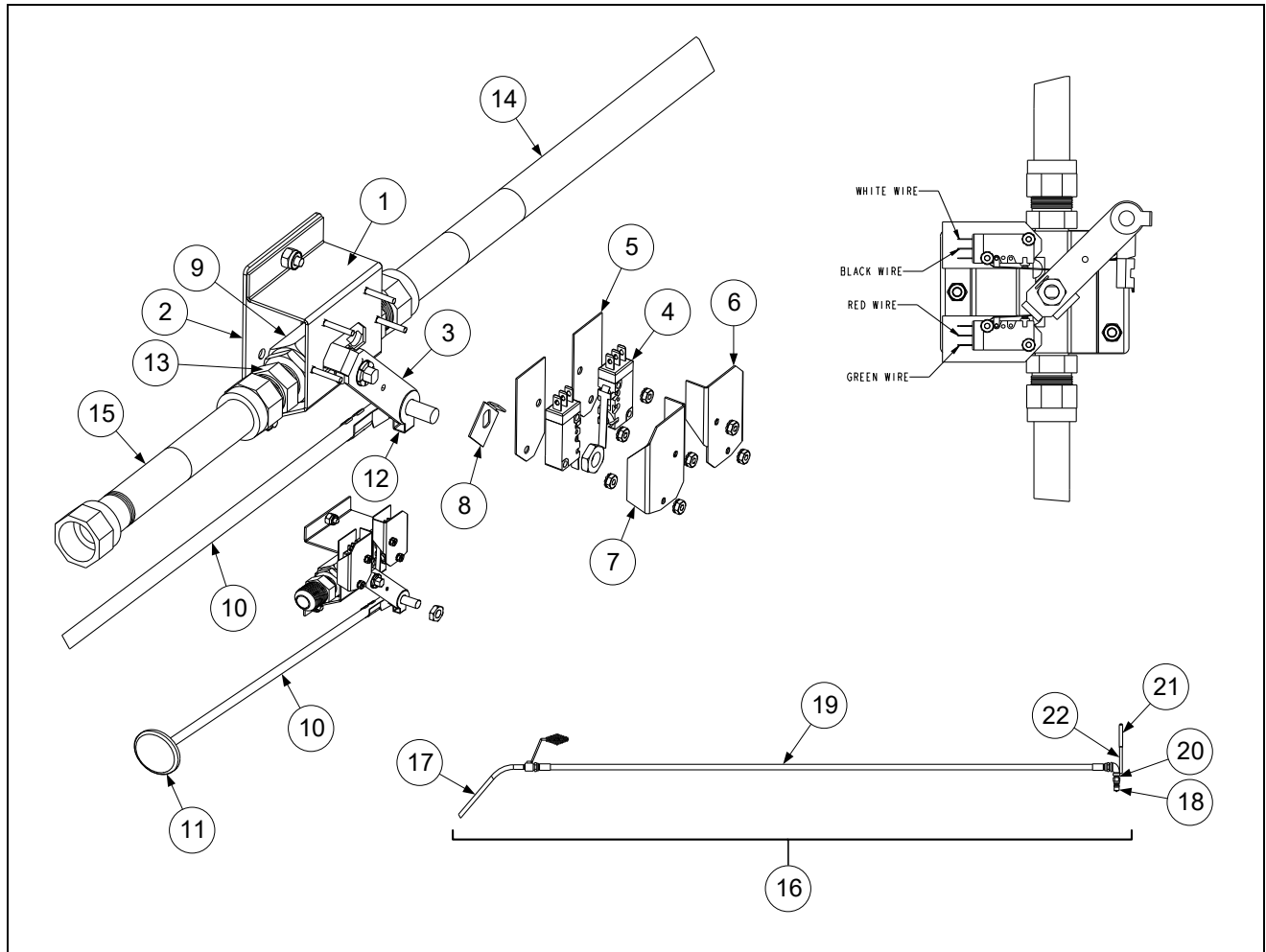


ITEM	PART #	COMPONENT
1	1085922	STUD ASSY, WASTE VALVE
2	1088882	PLATE ASS'Y, MOUNTNG DISPOSE
3	2401917	HANDLE, VALVE FRONT DISPOSE
4	8074936	MICROSWITCH, GOLD SEALED
5	8160220	INSULATION, RF SWITCH5
6	9012348	COVER, DV SAFETY SWITCH
7	9022348	COVER, DV SAFETY SWITCH
8	9002935	RETAINER, NUT RETURN VALVE
9	8100278	VALVE, 1/2" BALL
10	8239297	HANDLE, PUSH/PULL BULK OIL
11	8161203	CAP, OIL DISPOSE HANDLE
12	8090657	CLIP, CLEVIS ROD RIGHT END
13	8101668	ADAPTOR, MALE 5/8" OD X 1/2"
14	8101068	FLEX LINE, 5/8" OD X 21.50"
15	8101680	FLEX LINE 5/8" OD X 6.50"
	1088508	BRACKET ASSEMBLY, FRONT DISPOSE FQ120
16	8100490	QUICK DISCONNECT 1/2" FEMALE
17	8101669	ADAPTER, FEMALE 5/8" OD X 1/2"
18	8239608	BRACKET W/A, FRONT DISPOSE FQ2120
19	1085386SP	HOSE ASSY, WASH DOWN 10'
20	1061454	NOZZLE ASSY, W/HANDLE

1.10.4 Plumbing Front Oil Dispose/Filtration FQG80T cont.

ITEM	PART #	COMPONENT
21	8100487	QUICK DISCONNECT, ½" MALE
22	8102379	HOSE, 107½" X ½" X ½"
23	8130022	NIPPLE, ½" X CLOSE NPT BM
24	8160631	CAP, ½" X 3" RED VINYL
25	8237153	HANDLE W/A, WASH DOWN HOSE
26	8101434	HOSE ASSEMBLY PF - STANDARD

1.10.5 Plumbing Front Oil Dispose/Filtration FQG100T

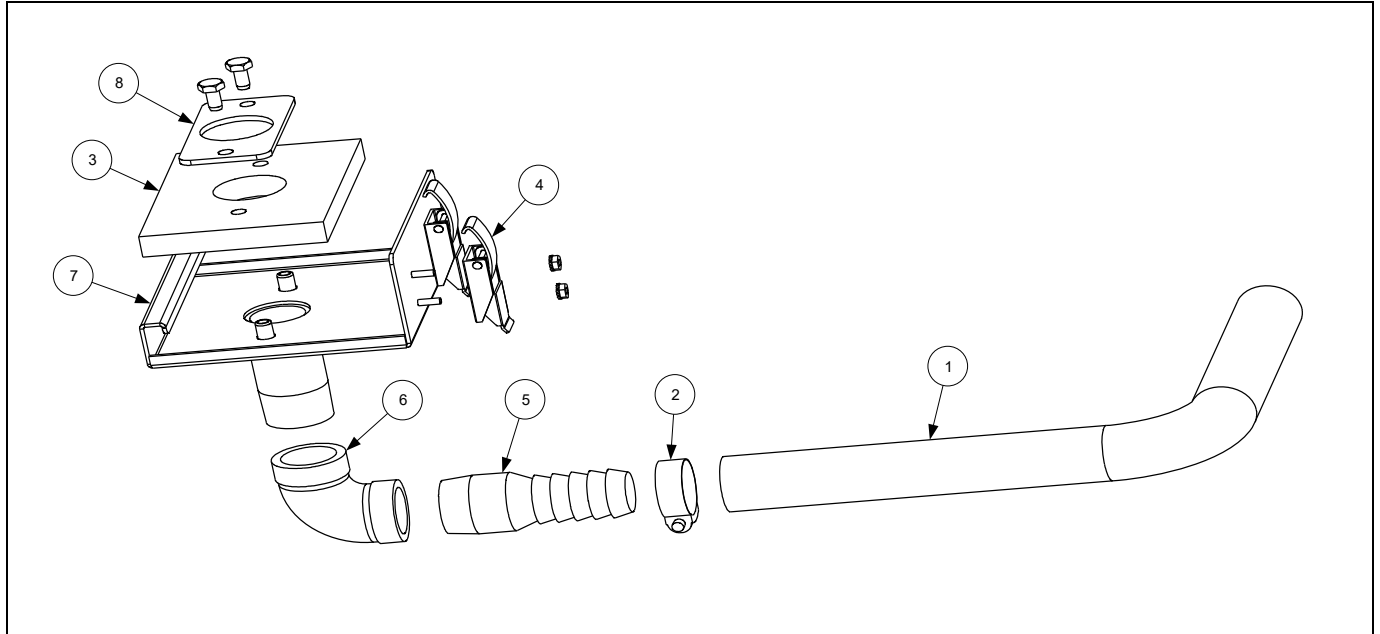


ITEM	PART #	COMPONENT
1	1085922	STUD ASSY, WASTE VALVE
2	1088882	PLATE ASS'Y, MOUNTNG DISPOSE
3	2401917	HANDLE, VALVE FRONT DISPOSE
4	8074936	MICROSWITCH, GOLD SEALED
5	8160220	INSULATION, RF SWITCH
6	9012348	COVER, DV SAFETY SWITCH
7	9022348	COVER, DV SAFETY SWITCH
8	9002935	RETAINER, NUT RETURN VALVE
9	8100278	VALVE, ½" BALL
10	8239297	HANDLE, PUSH/PULL BULK OIL

1.10.5 Plumbing Front Oil Dispose/Filtration FQG100T cont.

ITEM	PART #	COMPONENT
11	8161203	CAP, OIL DISPOSE HANDLE
12	8090657	CLIP, CLEVIS ROD RIGHT END
13	8101668	ADAPTOR, MALE 5/8" OD X 1/2"
14	8101068	FLEX LINE, 5/8" OD X 21.50"
15	8101680	FLEX LINE 5/8" OD X 6.50"
16	1085386SP	HOSE ASSY, WASH DOWN 10'
17	1061454	NOZZLE ASSY, W/HANDLE
18	8100487	QUICK DISCONNECT, 1/2" MALE
19	8102379	HOSE, 107 1/2" X 1/2" X 1/2"
20	8130022	NIPPLE, 1/2" X CLOSE NPT BM
21	8160631	CAP, 1/2" X 3" RED VINYL
22	8237153	HANDLE W/A, WASH DOWN HOSE

1.10.6 Boil Out Adaptor



ITEM	PART #	COMPONENT
	130000344SP	PLATE ASSY, BOIL-OUT FQ120
1	130001243	HOSE, 10' BOILOUT FQ80/120
2	8030374	CLAMP, HOSE - WORM GEAR
3	130000343	GASKET, BOILOUT FQ120
4	8100742	LATCH, DRAW MSDU50
5	8130525	BARB FITTING, 1' PIPE TO HOSE
6	8130995	ELBOW 1" NPT 90 DEG S/S
7	130000341	PLATE W/A, BOILOUT FQ120

1.11 FilterQuick™ FQG120T Series Wiring prior to 09/2022 (Magnetic Pan Switch)

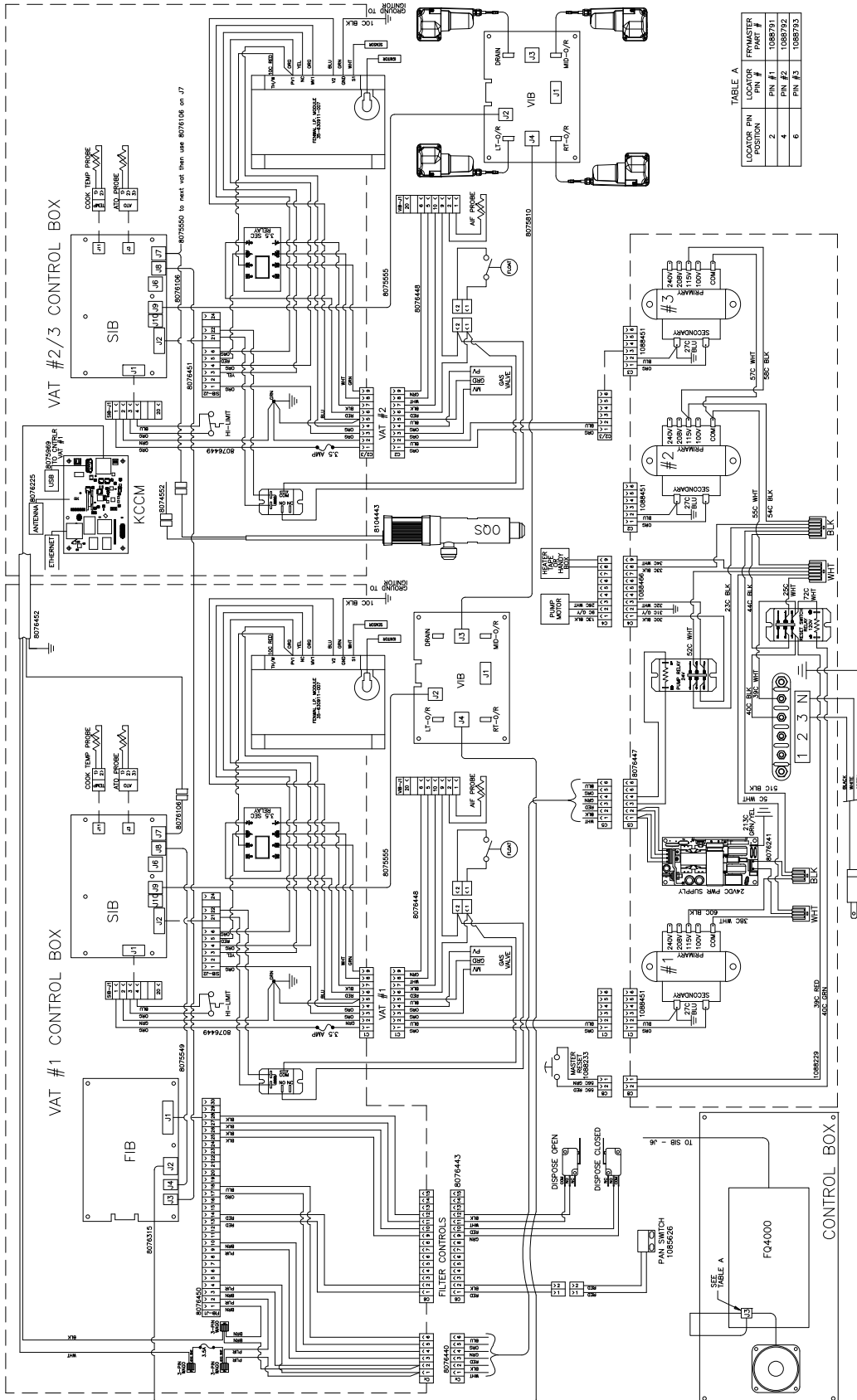


TABLE A

LOCATOR PIN POSITION	LOCATOR PIN #	FRMMASTER PART #
2	1	1085731
6	2	1085732
	3	1085733

8052208C

1.11.1 FilterQuick™ FQG120T Series Wiring after 08/2022 (Proximity Pan Switch)

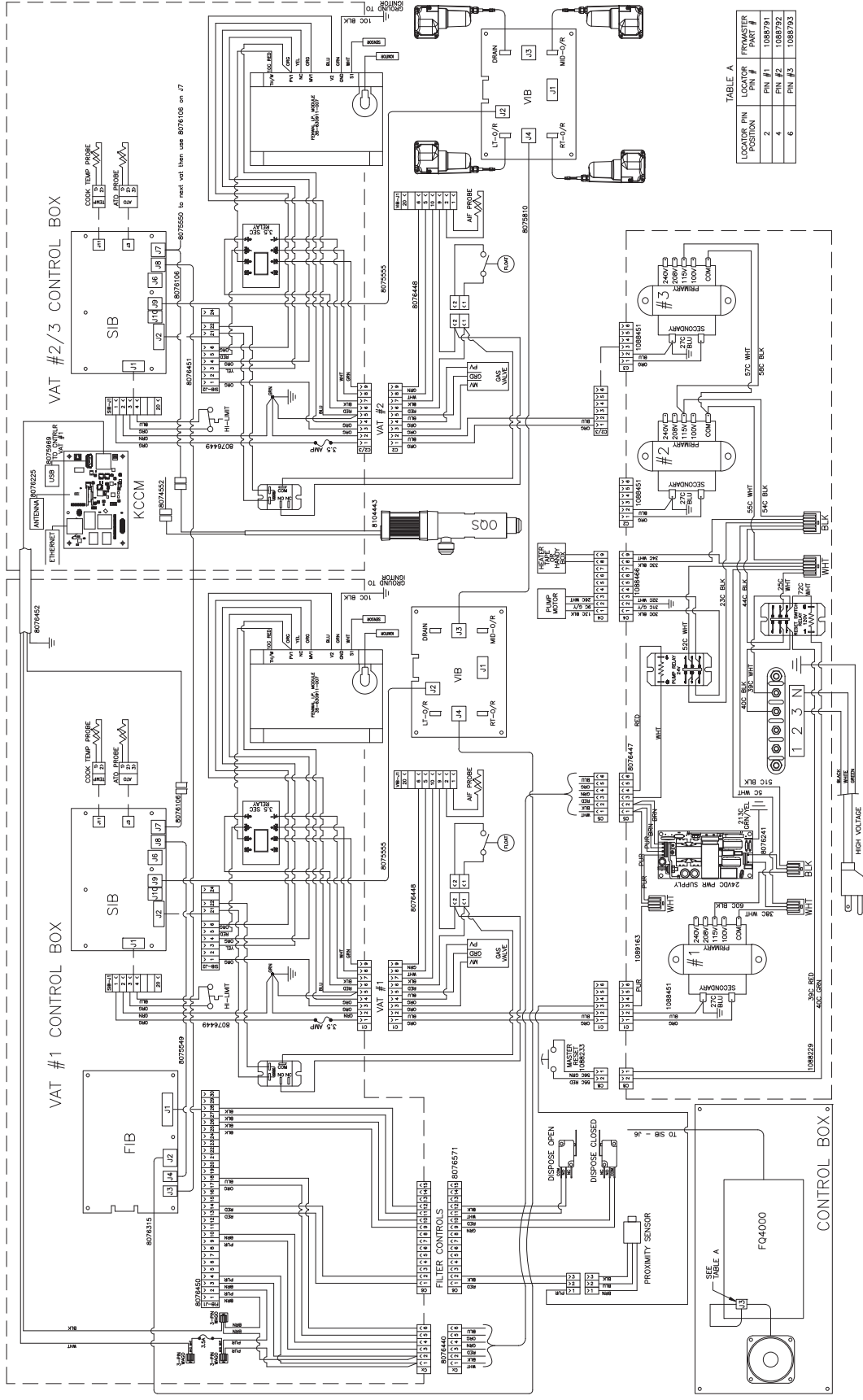


TABLE A

LOCATOR PIN POSITION	LOCATOR PIN #	RELAY PART #
2	1	1088791
4	2	1088792
6	3	1088793

8052208D

1.11.2 FilterQuick™ FQG100T Series Wiring

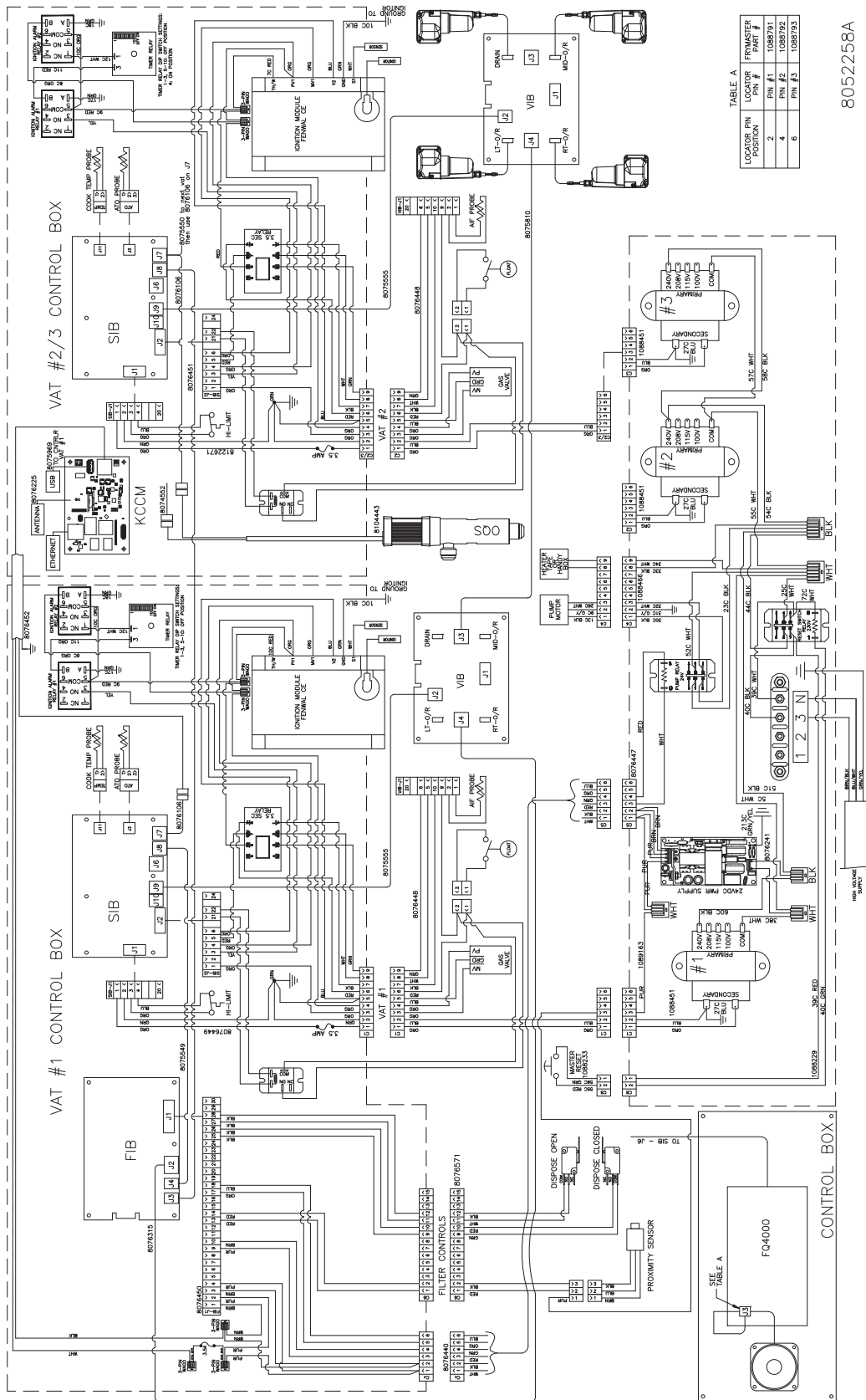
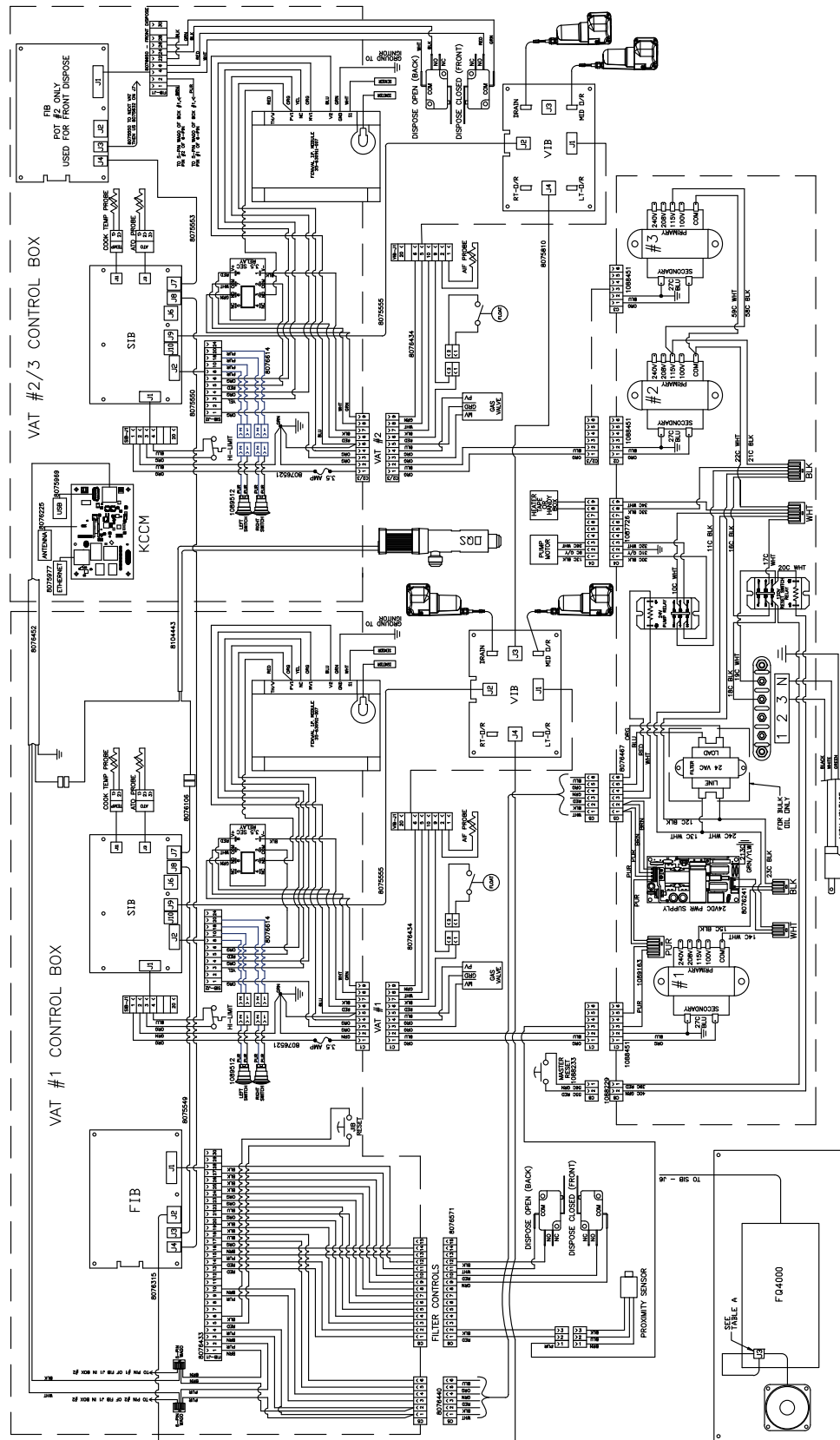


TABLE A

LOCATOR PIN POSITION	FRANZ FILTER MARK
2	PN #1 1088791
4	PN #2 1088792
6	PN #3 1088793

8052258A

1.11.3 FilterQuick™ FQ80T Series Wiring



8052259B

THIS PAGE INTENTIONALLY LEFT BLANK

©2025 Frymaster LLC. except where explicitly stated otherwise. All rights reserved. Continuing product improvement may necessitate change of specifications without notice.

Part Number FRY_P_8197943 05/2025

