



# Service Bulletin

(This bulletin and all other active bulletins are downloadable from our website at [www.frymaster.com/parts\\_service](http://www.frymaster.com/parts_service).)

**Bulletin 2003-32-ABDE**

**Page 1 of 3**

**Date: 06/30/2003**

## **SUBJECT: Introduction of Pro Series Electric Fryer**

Frymaster has begun production of the next generation of Frymaster 14, 17, and 22 kW fryers. These fryers are designated as FPPH14/17/22 (fryers equipped with the new FootPrint Pro filtration system), FMPH14/17/22 (fryers equipped with the Filter Magic Pro filtration system, and PH14/17/22 (Pro Series fryers without built-in filtration).

Filter Magic Pro (FMPH14/17/22) models consist of a FootPrint Pro filtration system under the left two positions with additional fryers or spreader cabinets added to the *right* of the filtration system. For example, an FMPH214 fryer could be configured in any of the following combinations: FFS, FSF, SFF where F is a fryer and S is a spreader cabinet. Whatever the configuration, the filter system will always be under the left two positions.

The electrical components of the fryers (e.g., elements, controllers, transformers, etc.) are the same as those used in the Common Electric Series fryers, but improvements have been made to the cabinetry and the location of components in the fryers to facilitate service.

The most significant difference between this series and its predecessors is the introduction of the FootPrint Pro filtration system. This new system is identical in operation to the FootPrint III.5 system, but its components have been completely redesigned. The new system includes a one-piece drawn stainless steel pan mounted on drawer-type rollers, which replaces the pan and carriage assembly used in the FP III.5 system. As part of this redesign, the filter pump and motor have been moved from the carriage assembly to a bridge over the filter pan.

The illustration and parts list on Pages 2 and 3 identify the most important components of the new filtration system.

Frymaster L.L.C., 8700 Line Avenue, P.O. Box 51000, Shreveport, LA 71135-1000

Shipping Address: 8700 Line Avenue, Shreveport, LA ZIP 71106

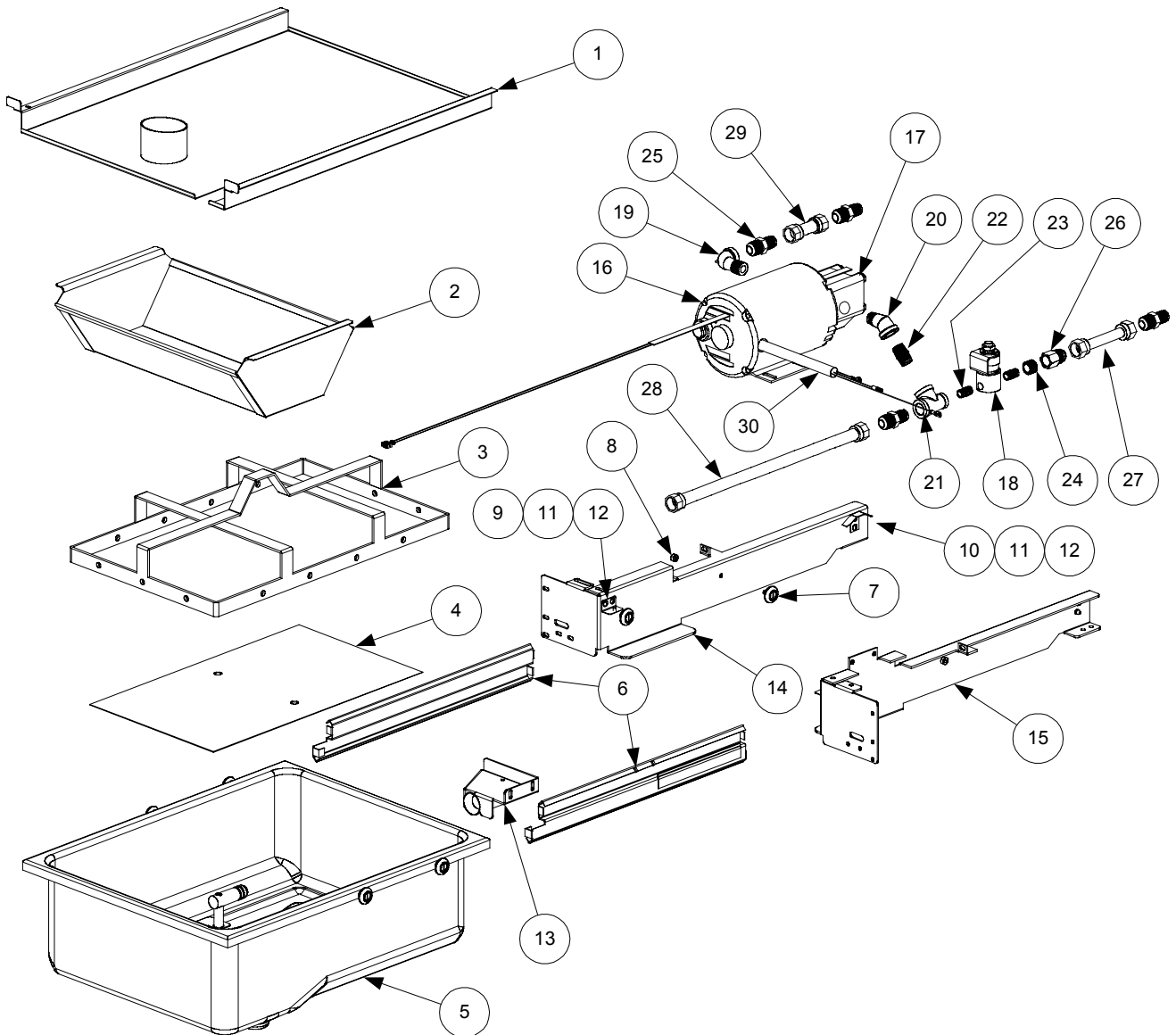
TEL 318-865-1711

FAX 318-219-7135

24-Hour SERVICE HOTLINE 800-551-8633

WebSite - <http://www.frymaster.com/service>

E-mail - [service@frymaster.com](mailto:service@frymaster.com)



ITEM	PART #	COMPONENT
*	826-1979	Filter Pan Roller Kit (four each of Items 7 and 8)
*	826-1980	Service Filter Pan (Includes Item 5, four of Items 7 and 8, two 816-0012, and two 813-0568.)
*	826-1981	Frymaster Service Filter Pan Assembly (Service Filter Pan plus Items 3 and 4)
*	826-1982	McDonald's Service Filter Pan Assembly (Service Filter Pan plus Items 3 and 4)
*	813-0568	Plug, 1/8-inch Socket Head Pipe (used with Item 5; two required)
*	816-0012	O-Ring (used with Item 5; two required)
1	823-3814	Lid
2	823-3929	Crumb Tray
3	810-2091	Hold Down Ring (For McDonald's fryers, use 810-2183)
4	200-2124	SanaGrid Filter Screen
5	823-3930	Pan, One-Piece Filter (does not include Items 7 and 8, pipe plug, or o-rings)
6	810-2012	Rails, Filter Pan Roller (includes one left and one right)
7	810-2198	Roller, Filter Pan
8	809-0417	Nut, 1/4-20 Flange Hex
9	823-3875	Bracket, Lid Support
10	200-3556	Guide, Filter Pan Lid
11	809-0104	Screw, 8-32 X 1/2-inch Slotted Truss Head
12	809-0247	Nut, 8-32 Hex Keps
13	823-3879	Suction Tube
14	200-4408	Rail, Left Filter
15	200-4409	Rail, Right Filter
16		Motor and Gasket Kit
	826-1785	100V 50/60 Hz
	826-1712	115V 50/60 Hz
	826-1756	208V 50/60 Hz
	826-1757	220-240V 50/60 Hz
	826-1755	250V 50/60 Hz
17	826-1264	Pump and Gasket Kit
18	807-2484	Valve, 1/4-inch Solenoid
19	813-0165	Elbow, 1/2-inch 90° Street
20	813-0342	Elbow, 1/2-inch 45° Street
21	813-0530	Tee, 1/2-inch X 1/4-inch X 1/2-inch Reducing
22	813-0022	Nipple, 1/2-inch Close
23	813-0838	Nipple, 1/4-inch Close
24	813-0304	Bushing, 1/2-inch to 1/4-inch Flush
25	810-1668	Adapter, 5/8-inch X 1/2-inch Male
26	810-1669	Adapter, 5/8-inch X 1/2-inch Female
27	810-1159	Flexline, 5.0-inch Oil Return
28	810-1369	Flexline, 17.5-inch Oil Return
29	810-1160	Flexline, 3.0-inch Oil Return
30	807-3828	Cable, FootPrint Pro Pump Motor
*		Heater Strip Assembly
	106-2851SP	100-120V 25W 18-inch
	106-2852SP	208-250V 25W 18-inch

\* Not illustrated.