



Service Bulletin

(This bulletin and all other active bulletins are downloadable from our website at www.frymaster.com/parts_service.)

Bulletin 2006-03-ABDE
Page 1 of 2
Date: 02/22/2006

Replacement elements for Common Electric and Pro-Series Electric fryers are now packaged in kits, which include high-temperature wire ties. The elements should be installed on one-piece tilt brackets (106-0572, left and 106-0573, right; \$20.00 list). If not present on the fryer, new tilt brackets should be installed. The brackets are not included in the kit.

Effectively immediately, the part numbers for these fryer elements have changed, as have the list prices. At right is a list of the new part number, the old part number and the list price for the new kit.

Please distribute this bulletin and the attached instructions to all pertinent personnel.

Questions should be directed to the Frymaster Technical Call Center, 800-551-8633.

New Electric Element Kits		
New Part #	Old Part #	New List Price
826-2149	807-2639	285
826-2150	807-2640	285
826-2151	807-2641	285
826-2152	807-2642	285
826-2153	807-2643	285
826-2154	807-2644	285
826-2155	807-2645	285
826-2156	807-2646	400
826-2157	807-2647	400
826-2158	807-2648	400
826-2159	807-2649	400
826-2160	807-2650	400
826-2161	807-2651	400
826-2162	807-2652	400
826-2163	807-2653	400
826-2164	807-3171	460
826-2165	807-3172	460
826-2166	807-3173	460
826-2167	807-3174	460
826-2168	807-3175	460
826-2169	807-3176	460
826-2170	807-3177	460
826-2171	807-3178	460
826-2172	807-3237	460

Frymaster L.L.C., 8700 Line Avenue, P.O. Box 51000, Shreveport, LA 71135-1000

Shipping Address: 8700 Line Avenue, Shreveport, LA ZIP 71106

TEL 318-865-1711

FAX 318-219-7135

24-Hour SERVICE HOTLINE 800-551-8633

WebSite - <http://www.frymaster.com/service>

E-mail - service@frymaster.com

Element Replacement Kit

When replacing elements on Common Electric and Pro-series electric fryers, it is important to ensure the element wiring is properly secured and routed.

New-style tilt brackets (p/n 106-0572, left and 106-0573, right) are essential to achieve the proper wire routing. The high-temperature wire ties included with the kit are used to secure the element wiring to the bracket. Conventional wire ties can be used lower in the cabinet for routing and securing the element wires. Follow the illustrations below for assessing the tilt brackets and routing the element wiring. Replace the bushing surrounding the probe on the tilt bracket with the bushing provided; plug the unused probe port, if present, with the provided dome plug. Use the provided stainless steel wire ties to secure the probe to the bracket.

In This Kit		
Part No.	Description	Qty
*	Element	1
826-2141	Wire tie kit (4 ties)	1
807-1025	Probe bushing	1
816-0480	Dome plug	1
809-0567	Stainless steel ties	2
8072135	6-pin male plug	1
807-2137	9-pin female plug	1
819-6146	Instructions	1

* Elements vary

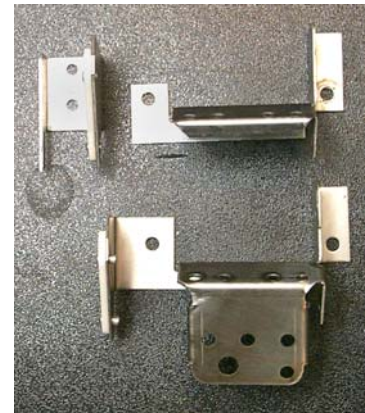
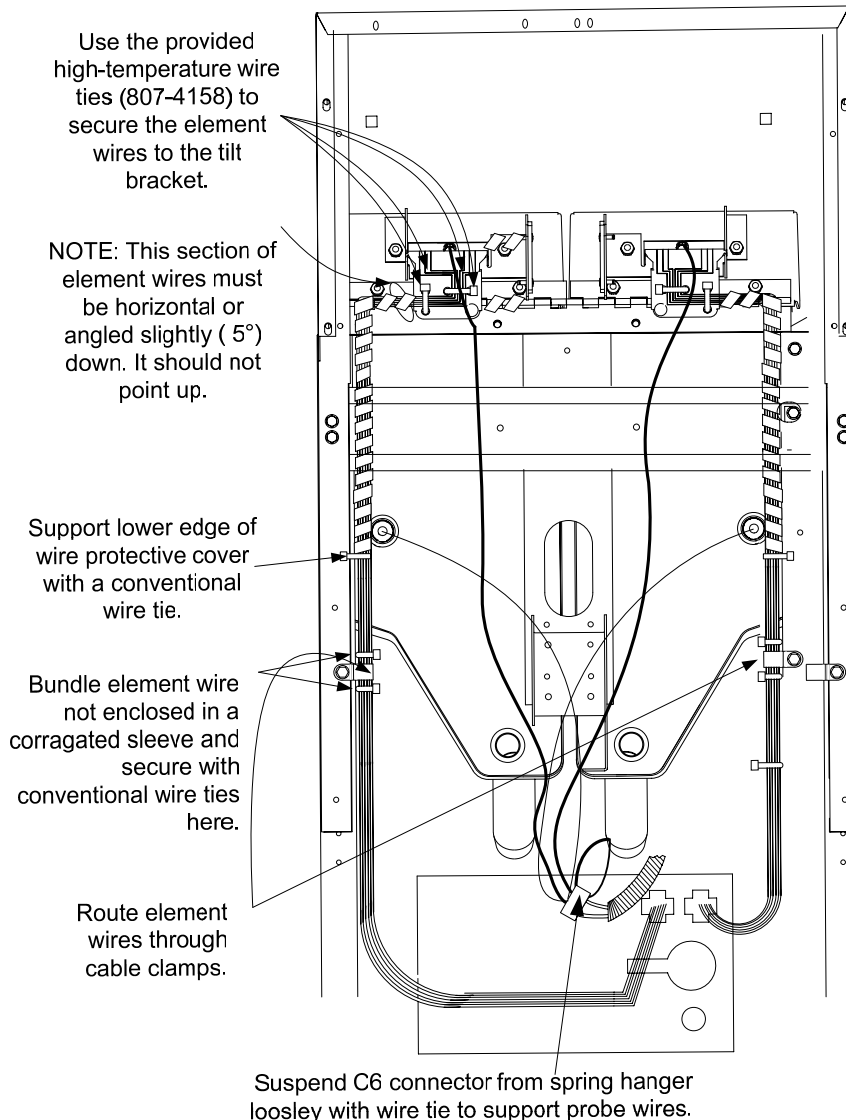


Figure 1: If present, the two-piece bracket at top should be replaced by the one piece bracket (below). An additional brake on the new bracket provides an additional surface to secure the elements wiring.



Figure 2: The high-temp wire ties are shown securing the element wires to the one-piece tilt bracket.