



Service Bulletin

(This bulletin and all other active bulletins are downloadable from our website at <http://www.frymaster.com/iframe.asp?oc=fry®ion=default&article=onlineliterature.xml>.)

Bulletin 2006-18-ABDE**Page 1 of 1****Date: 9/12/2006**

SUBJECT: Frypot Stud Misalignment

A limited number of service H50/52/55 frypots, splits and fulls, were assembled with misaligned front studs. The result of this misalignment is the igniter can be too close to the burner ceramic, which prevents ignition.

A new jig, which corrects this flaw, was installed September 1, 2006. Please inspect service frypots with serial numbers prior to 9/06 before installation. There should be no visible indication of misalignment of the shielding and the burner ceramic should not be readily visible through the igniter mounting port. An igniter assembly should easily slide into place without the igniter or sensor contacting the ceramic.

Frypots which reveal the misalignment shown in the accompanying photos should not be installed.

If you encounter a frypot exhibiting these defects, contact Frymaster Technical Service, 800-551-8633 or the regional international Frymaster office.



Figure 1: The burner ceramic should not be readily visible when looking straight into the igniter port. The burner in this misaligned frypot (see arrow) extends into the path of the igniter.

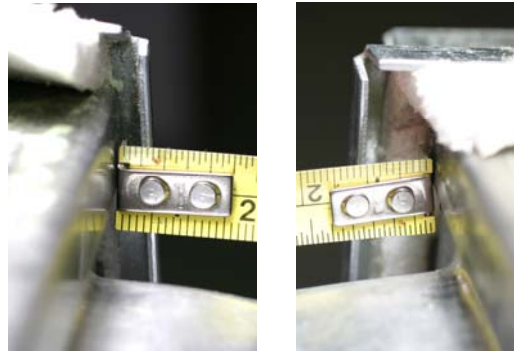


Figure 2: The spacing on the shielding should be within a 1/8" of equal. Frypots that exhibit wide variation from side to side (as shown above) should not be installed.

Frymaster L.L.C., 8700 Line Avenue, P.O. Box 51000, Shreveport, LA 71135-1000

Shipping Address: 8700 Line Avenue, Shreveport, LA ZIP 71106

TEL 318-865-1711

FAX 318-219-7135

24-Hour SERVICE HOTLINE 800-551-8633

WebSite - <http://www.frymaster.com/general.asp?article=servicehome.xml>

E-mail - service@frymaster.com