

# Service Bulletin

Subject: Accurate Installation of Flex Line Kit

3/20/2020

Calls to Frymaster's call center indicate confusion over the flex line replacement program under way.

**The flex line to be replaced is above the JIB on the right side of a FilterQuick gas fryer.** It is clearly shown in the instructions provided with the kit, in Bulletin 2020-03 and here with large arrows. It runs from the left burner above the JIB to the gas valve.

This flex line is to be replaced and re-routed above the drain valve and out of the path of the JIB.

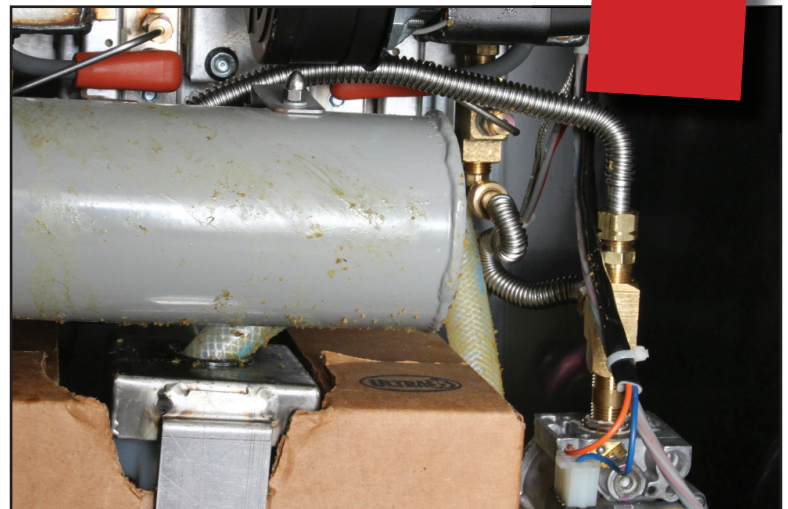
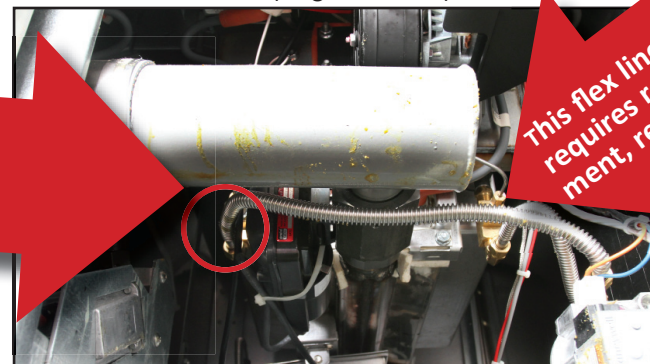


Fig 1: Gas flex line routed correctly over the drain valve and above the JIB (Jug in a Box).

The flex line that is to be replaced comes from the left-side burner on the fryer's right side. It's above the JIB. Route the new line over the drain valve.



This flex line requires replacement, re-routing.

Fig 2: Gas flex line that requires re-routing.