

Service Bulletin

This bulletin addresses issues with the ¼" fuse holder and intermittent power issues.

This **ONLY** applies to the fuse holder cap with the **red arrow** in Figure 2 & 3.

In August 2024, fuse holders were changed to holders denoted with **green arrow** in Figure 2, and this bulletin does not apply to those.

Subject: Fuse Holder

Models: Frymaster/Dean Fryers

8/6/2024

If a fryer is having issues with controllers resetting or losing power, check the ¼" fuse holder below the component box (see Figure 1).

Inspect the fuse cap to determine if the fuse cap is loose (see Figure 3). When loosened, the fuse cap should spring out (see Figure 4). Twist the fuse holder to remove the cap with the fuse (see Figure 5).

Remove the fuse from the fuse holder. Note the inner fingers that hold the fuse and the spring (see Figure 6). If these fingers fit too tightly around the fuse/spring they prevent the fuse from moving freely up and down in the cap.

Using needle nose pliers, carefully squeeze and conform the inner fingers to the shape of the cap (see Figures 7 and 8) so it **DOES NOT** restrict the fuse from moving/having spring action.

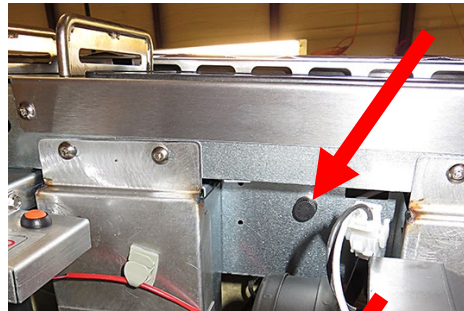


Figure 1



Figure 2

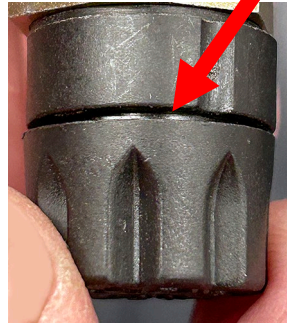


Figure 3

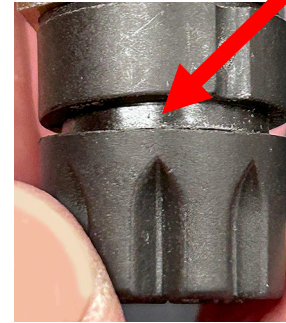


Figure 4

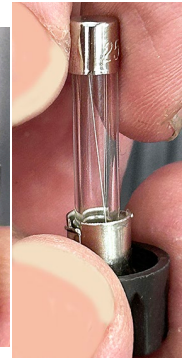


Figure 5

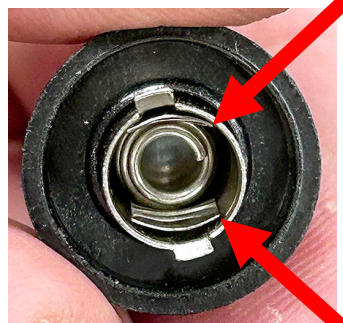


Figure 6

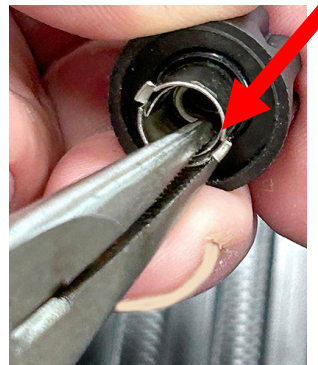


Figure 7

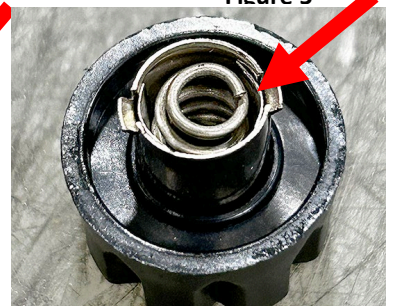


Figure 8

The fuse should move freely and contact the spring (see Figure 9).



Figure 9