

Service Bulletin

This bulletin cancels and replaces SB25-02. This addresses issues with loose nuts/bolts on Sana Grid screens, for EMEA Popeye's and KFC, damaging filter pumps.

Subject: Loose Sana Grid Hardware

Models: International XYCFHC118/218/318, XYCFRE118, XYSCHF218/318, XYSCHFRE218/318, YSCFHC218/318, YSCFHC214, 2FQE80, FPRE380/680, XFPRE280/380/480/580

Hardware on some Sana Grid screens with stiffeners, manufactured with serial #'s starting with 2311 through 2501, may have loosened up during shipment and fallen off in the filter pan. If this hardware is pumped into the filter pump, it may damage the pump.

Frymaster EMEA will locate, contact and authorize the FAS's to replace the screens at no-cost to the customer.

Parts will be provided free of charge from Frymaster. Please request number required for resolving units in your region.

Frymaster will pay for the service call trip, plus 30 minutes labor per screen replaced in the restaurant.

Submit a claim under warranty for payment.

A small amount of these may be performed when starting up fryers for KFC and Popeye's International. The others will be performed proactively in the field.

Below is the quick procedure:

1. Remove the Sana Grid screen from the filter pan
2. Dispose of the Sana Grid screen. Ensure the old screen **DOES NOT** remain in the restaurant and is disposed.
3. Replace with the new 1081029SP or 1067330SP Sana Grid screen with welded nuts (see Figure 2).

2/5/2025

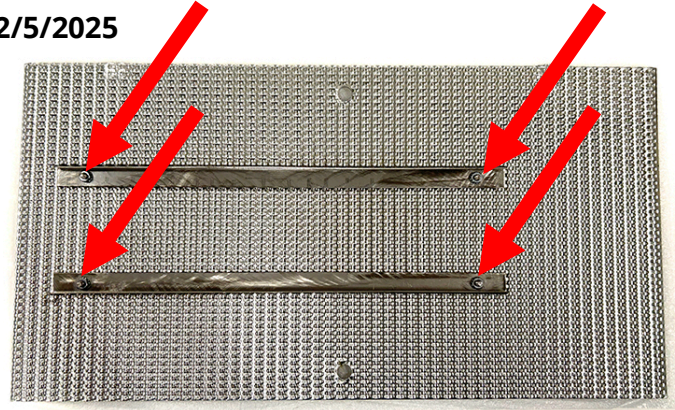


Figure 1

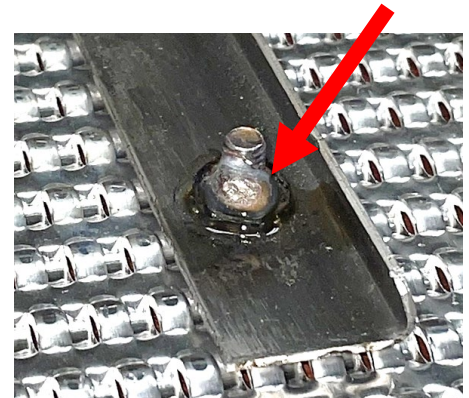


Figure 2