

Service Bulletin

This bulletin addresses float switch grip-clips, float inspections and troubleshooting.

Subject: Float Switch Clip, Float Inspections & Troubleshooting

Models: FQG60T, FQG80T, FQG100T & FQG120T Touch Screen Fryers

7/2/2025

During startup and/or service calls of FQG60T, FQG80T, FQG100T and FQG120T fryers, perform a quick visual inspection of the float switch.

1. If the float switch has a **HEAVY-DUTY GRIP RING** supplied by the manufacturer on **TOP OF THE FLOAT** **AND** a **HEAVY-DUTY GRIP RING BELOW THE FLOAT** (see Figure 1), the float is good stock and **DOES NOT NEED TO BE REPLACED**.
2. If the float switch has an **INDENTED TRIANGLE ON THE TOP OF THE FLOAT** (see Figure 2), it **MUST** have a **GRIP RING ONLY** on the **TOP OF THE FLOAT**. If it has an **E-clip** on **TOP OF THE FLOAT** (see Figure 3), the **E-clip** **MUST BE REPLACED** with a **GRIP RING**.



Figure 1 Heavy Duty Grip Ring on Top & Bottom.

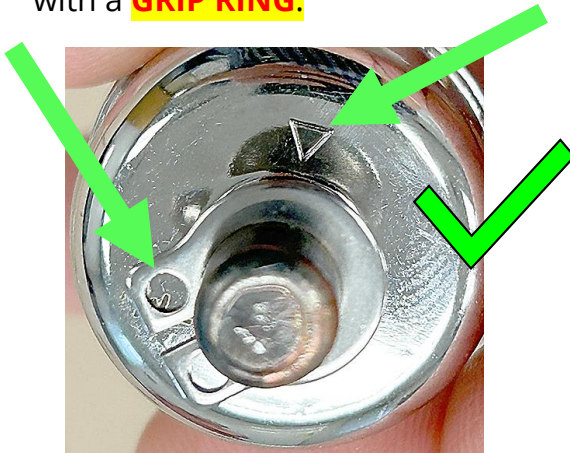


Figure 2 Float switch showing Indented Triangle & Grip Ring on Top.

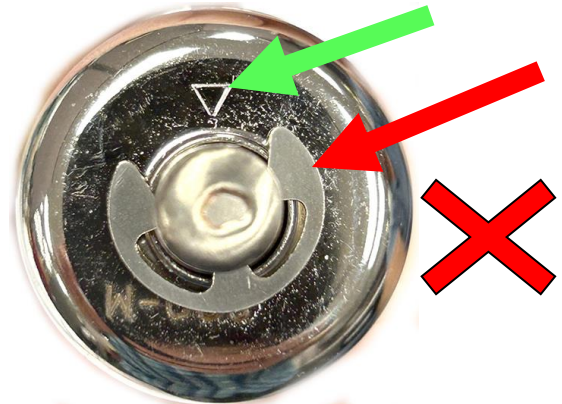


Figure 3 Float switch showing E-clip.

CONTINUED ON NEXT PAGE

3. If the float **DOES NOT HAVE A TRIANGLE** on the **TOP OF THE FLOAT** (see Figure 4) **AND** it has an **E-clip BENEATH THE FLOAT** (see Figure 5), **IT MUST BE REPLACED** with kit PN 8262541!



Figure 4 Float switch with **NO** triangle on top.

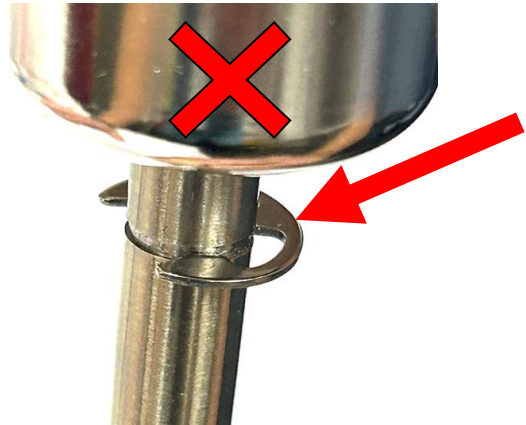


Figure 5 Float switch with E-Clip beneath the float that **DOES NOT** have a triangle on the top.

Float switches **WITH** the **INDENTED TRIANGLE** that need grip rings, should order kit 8263865, which contains 7 (seven) grip rings. **GOOD** external Snap Ring pliers **will be required** to install the grip rings.

When replacing float switches with kit PN 8262541, ensure that only float switches **WITH BLACK LEADS ONLY** (see Figure 6) are used as replacements.

FAS's should order replacement kits first. Once they receive the new kits, they should return any 8262541 kits with **RED** leads (see Figure 7).

Standard snap rings **SHOULD NOT** be used (see snap ring on the left in Figure 8). They will not hold and will come loose.

ONLY HEAVY-DUTY GRIP RINGS from the manufacturer (see grip-ring on right in Figure 8) should be used.

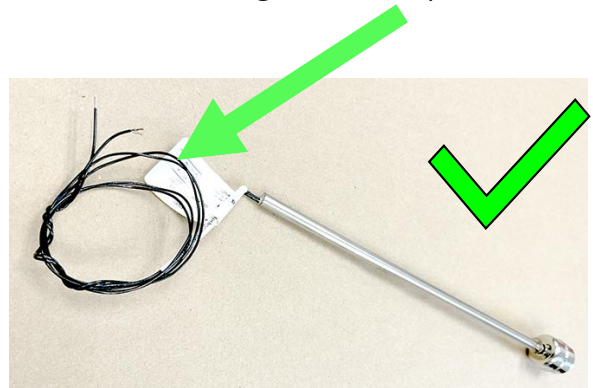


Figure 6

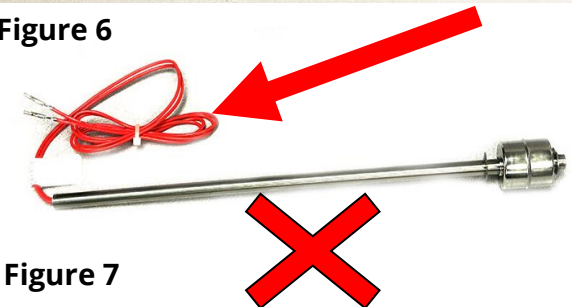


Figure 7

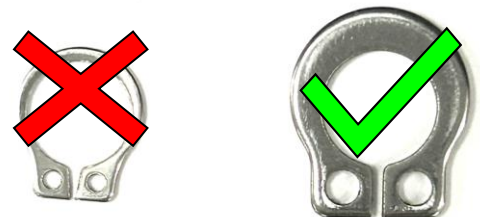


Figure 8

CONTINUED ON NEXT PAGE

All float switches (ones that have been removed and any unused switches with red leads) should be returned to:

Frymaster

Attention: Jeff Jones

8700 Line Avenue

Shreveport, LA 71106

318-865-1711

If you have any questions, please call 800-551-8633.

If float switch issues exist with good float switches shown in Figures 1 and 2, use the troubleshooting below.

Troubleshooting Low Oil Level / Possible Float Switch Issues

1. Look at the error logs -

a. On the affected vat, press  →  →  → 3000 → E-LOGS
SERVICE MANAGER

- b. If there are E56 (Float Switch stuck up) or E65 (Float Switch not made) these are float switch errors.
- c. If you have these errors, ensure that it doesn't have an incorrect float switch as seen in Figures 4 & 5. It should match one of the float switches approved with green checks seen in Figures 1 & 2. If the incorrect float is installed, replace the float switch.
- d. If these errors occur on the vat, ensure the float is free of debris and that it moves freely up and down. Moving the float switch up and down while spinning the float should loosen the float.
- e. If these errors are not present and there are intermittent low oil level alarms, the issue may be that the AIF and Temp probes may be inaccurate. See section 3 on page 5.

CONTINUED ON NEXT PAGE

2. Troubleshoot the Time Delay Relay Board

a. With the float switch in the **UP** position:

- i. Test across pins 1 (Red) & 8 (Black) (see Figures 8, 10 & 11). 24VDC should be present with the switch activated.
- ii. Test **across pins** 6 (green) & 7 (white) or 2 & 3, depending which pins have green and white attached (see Figures 9, 10 & 11). The voltage should be near 0VDC when activated. If the voltage is above 0.3VDC with power on and contacts closed, the time delay relay must be replaced.

CONTINUED ON NEXT PAGE

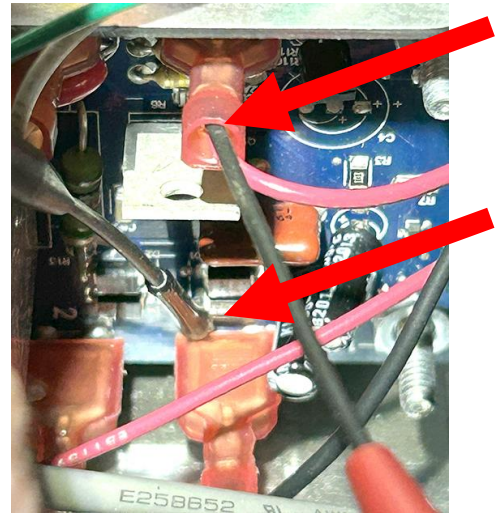


Figure 8

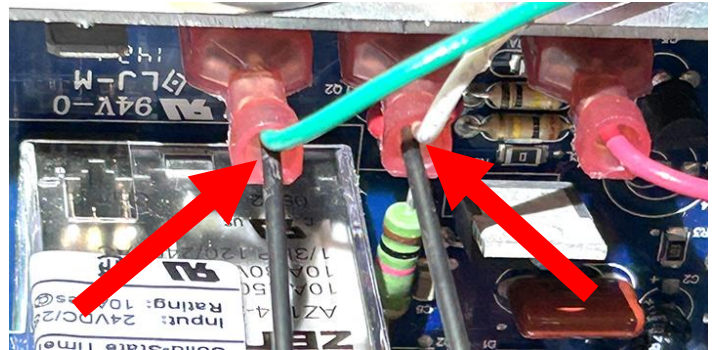


Figure 9

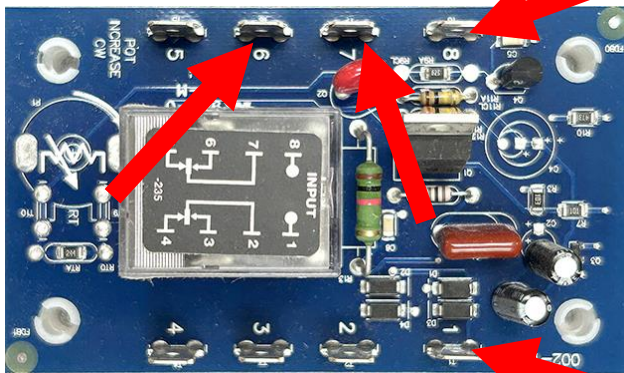


Figure 10

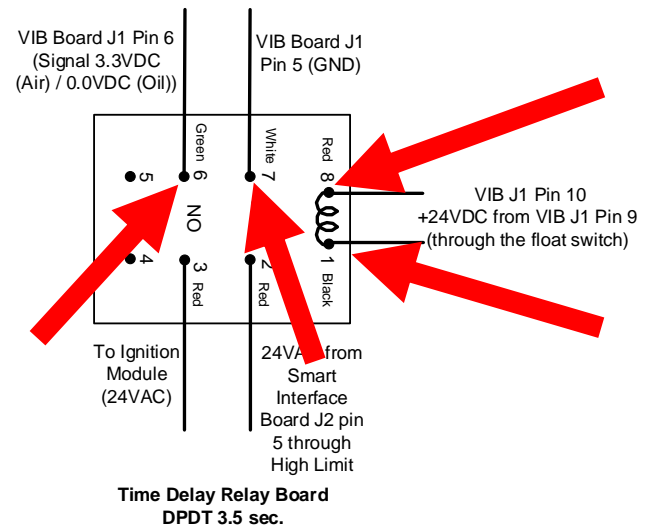


Figure 11

110	1164	43		180	1309	82		250	1453	121		320	1594	160		390	1734	199
115	1174	46		185	1320	85		255	1463	124		325	1604	163		395	1744	202
120	1185	49		190	1330	88		260	1473	127		330	1614	166		400	1754	204
125	1195	52		195	1340	91		265	1483	129		335	1624	168		405	1764	207